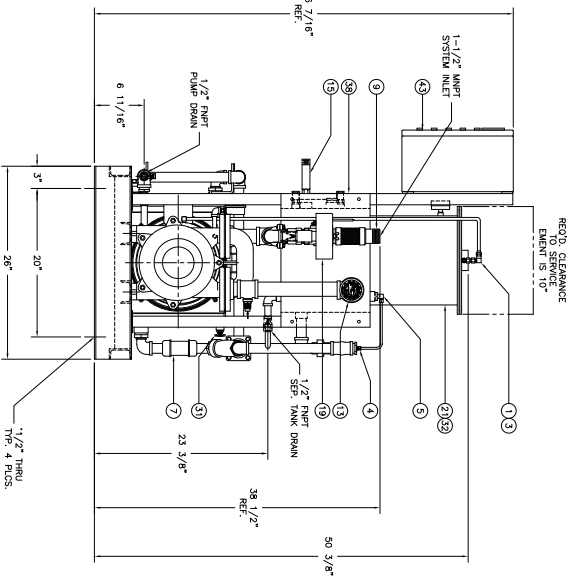
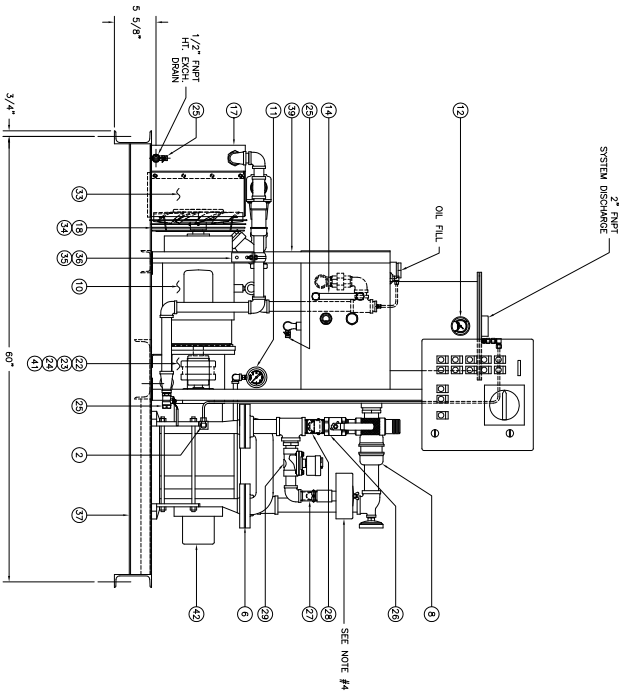
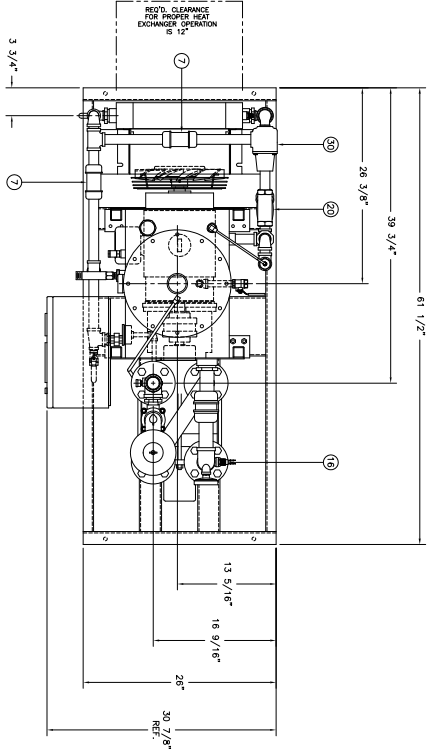


GENERAL ARRANGEMENT ONLY

- SYSTEM NOTES:
- 1) LOCATE VACUUM SYSTEM ON A FLAT LEVEL SURFACE.
 - 2) PLUG EMPTY PORTS WITH SQUARE HEAD NPT PIPE PLUGS.
 - 3) TIGHTEN FAN SET SCREWS TO 7 FT.-LBS.
 - 4) 3" CLEARANCE REQUIRED TO SERVICE ELEMENT.



ITEM	QTY	DESCRIPTION
1	1	FITTING 1/4" MNPT X 1/4" TUB STRT BRG
2	1	FITTING 1/4" MNPT X 1/4" MNPT TUBE 90° EL BRG
3	1	UNION ELBOW, BRASS COMPRESSION
4	1	FITTING 1/4" MNPT X 1/4" COMPRESSION
5	1	FITTING COMPRESSION 1/4" TUBE X 1/4" NPT ELBOW
6	2	GASSET INWARD 3-1/2" OD X 1-5/8" ID X 1/16" THK
7	3	FLEX CHRG 1" NPT CS/NIT
8	1	FLEX CONNECTOR 1-1/2" X 8"
9	1	MOTOR 7.5 HP 4P TERC 231C 230/460V
10	1	GAUGE VACUUM 1/4" NPT 0-30"Hg BRG 2.5" DIAL
11	1	GAUGE PRES 1/4" NPT 0/15 PSIG BRG 2.5" DIAL
12	1	GAUGE TEMP 1/2" NPT 20/240°F -10/110°C 3" DIAL
13	1	GAUGE LEVEL 6" LONG X 1/2" NPT
14	1	SWITCH LEVEL 1" XP BRASS/SSIT
15	1	SWITCH HI-TEMP 1/2" NPT N4 NC 225°F
16	1	HEAT EXCHANGER 17" X 12" 1PASS AIR/LIO AL/AL
17	1	FAN 12" 10 BLADE CWR/PULL
18	1	FILTER SILENCER 1" NPT
19	1	STRAINER X 1" NPT CI
20	1	SEPARATOR ELEMENT TH0100--160 DALV
21	1	DRIVE COUPLING 75 1 3/8" CI
22	1	DRIVE COUPLING 75 28MM CI
23	1	COUPLING ELEMENT SIZE 7-4E
24	1	VALVE BALL 1/2" NPT SP BRG/BRG/PFFE
25	3	VALVE BUTTERBALL 1-1/2" NPT
26	1	VALVE CHECK HINGE 1" NPT CS/AL/BRNA
27	1	VALVE CHECK HINGE 1-1/2" NPT CS/AL/BRNA
28	1	VALVE SOLENOID 1" NPT NI NC BRASS/BLVA 120V
29	1	VALVE TEMPERATURE CONTROL 1" NPT 170°F CI
30	1	VALVE PETCOCK 1/4" NPT BRG
31	1	SEPARATOR OIL 2" NPT INLET/OUTLET CS
32	1	SHROUD FOR 12" OD FAN CS
33	1	BRACKET U BOLT 1" PIPE
34	1	BRACKET PIPE 1/4" X 3" X 4" CS
35	1	BRACKET U BOLT 1" PIPE
36	1	BASEPLATE OIL CS
37	1	LEG/BRACKET CONTROL PANEL
38	3	LEG SEPARATOR 1 1/2" X 32" CS
39	3	OIL DRAULICER (DAL) NOT SHOWN
40	8	MONO BLOCK ASSEMBLY TNS/H40 215T
41	1	VACUUM PUMP LIQUID RING 2 STAGE MECH SEAL
42	1	CONTROL PANEL SWP L X 15" X 15" X 8" ENCL-RITIAL
43	1	

REV	DESCRIPTION	DATE	APPR
REVISIONS			

THIS PRINT IS PROPERTY OF TRAWANI PUMPS USA, INC. AND MAY NOT BE GIVEN TO ANY OTHER CONCERN WITHOUT THE CONSENT OF TRAWANI PUMPS USA, INC.

TOLERANCES

DECIMAL 3. 0025"
 FRACTIONAL 3. 1/2"
 ANGULAR 3. 0° 30' 00"
 UNLESS OTHERWISE SPECIFIED IN DRAWING

PART NO. _____
 DIMS BR: _____ DATE: _____
 CHECK BR: _____
 APPROVED BR: _____ SCALE: 1 = 8

MODEL NO. TRO100H-1A
 DESCRIPTION: DYNASEAL 7.5 HP AIR COOLED VACUUM SYSTEM

TRAWANI PUMPS USA
 Liquid Ring & Steam Vapor Recovery Pumping and Systems