

DIMENSIONI D'INGOMBRO

Overall dimensions

POMPE CENTRIFUGHE MONOSTADIO

Monostage centrifugal pumps

SERIE

Series **MCU-CH gr. 3-4 NS.** pag.1/2



**TRAVAINI
PUMPS USA**

Liquid Ring & Rotary Vane Vacuum Pumps and Systems

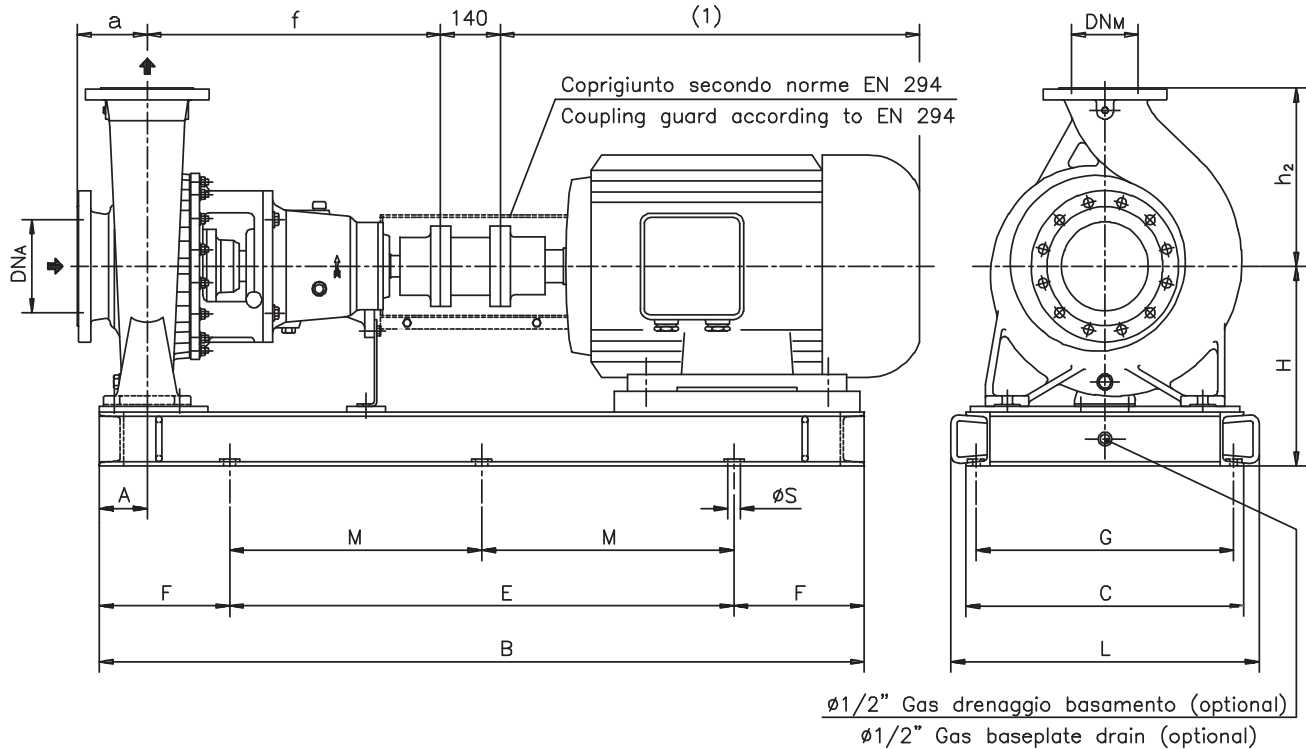
200 Newsome Drive

Yorktown, VA 23693

1-800-535-4243

www.Travaini.com

Versione **ACCOPPIATA (BASE - GIUNTO SPAZIATORE)**
COUPLED construction (BASEPLATE - SPACER COUPLING)



Pompa tipo <i>Pump type</i>	DIMENSIONI							MOTORE ELETTRICO <i>Electric Motor</i>										
	<i>Dimensions</i>							132S/132M		160M/160L		180M/180L		200L		225S/225M		
	DN _A	DN _M	a	f	h ₂	A	N°	H	Peso <i>Weight</i>	N°	H	Peso <i>Weight</i>	N°	H	Peso <i>Weight</i>	N°	H	Peso <i>Weight</i>
100-400	125	100	140	530	355	110	C13	413	337	C13	413	336	C13	413	335	C13	413	335
125-400	150	125	140	530	400	110				C13	448	348	C13	448	346	C13	448	346
150-315	200	150	160	670	400	110				C13	448	398	C13	448	397	C13	448	397
150-400	200	150	160	670	450	110							C13	448	445	C13	448	445
200-315	250	200	180	670	480	110							C13	488	466	C13	488	464
200-400	250	200	180	670	500	110							C13	488	506	C13	488	504
250-315	300	250	250	720	560	125							C21	578	596	C21	578	594

Disegno schematico. Dimensioni in mm con tolleranze secondo EN 735-1995.
Pesi indicativi in Kg, riferiti a pompe in esecuzione "F" ghisa escluso motore, non impegnativi.
Schematic drawing. Dimensions in mm with tolerances to EN 735-1995 standards.
Weights in Kgs, referred to pump in cast iron "F" construction without motor, not certified.

(1) Dimensioni in funzione della marca del motore elettrico installato.
Not certified dimensions according to installed motor manufacture.

RIF. - Ref.: F.P./C.T.

SOSTITUISCE - Replaces: 2600.105.201.01.A

DATA - Date: SETTEMBRE 2004 - September 2004

N°.: 2600.105.201.02.A

DIMENSIONI D'INGOMBRO

Overall dimensions

POMPE CENTRIFUGHE MONOSTADIO

Monostage centrifugal pumps

SERIE

Series **MCU-CH gr. 3-4 NS.** pag.2/2



**TRAVAINI
PUMPS USA**

Liquid Ring & Rotary Vane Vacuum Pumps and Systems

200 Newsome Drive

Yorktown, VA 23693

1-800-535-4243

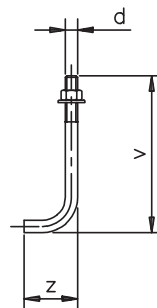
www.Travaini.com

Versione **ACCOPPIATA (BASE - GIUNTO SPAZIATORE)**
COUPLED construction (BASEPLATE - SPACER COUPLING)

BASAMENTI

Base plates

N°	B	C	E	F	L	M	G	øS	N°fori holes
C05	1200	420	800	200	480	-	380	16	4
C11	1350	500	950	200	570	-	452	18	4
C13	1650	640	1050	300	710		592	18	4
C21	1850	720	1350	250	792	675	670	22	6



BULLONI DI FONDAZIONE

(OPTIONAL)

Foundation bolts

d	v	z
M14	280	50
M16	350	60
M20	400	80

DIMENSIONI FLANGE

Flanges dimensions

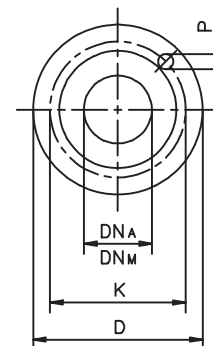
DN _A -DN _M	D	K	P	N°fori holes
65	185	145	18	4
80	200	160	18	8
100	220	180	18	8
125	250	210	18	8
150	285	240	22	8
200	340	295	22	12
250	405	355	25	12
300	460	410	25	12

FLANGE:

Dimensioni secondo
UNI 2223-2229 PN16

FLANGES:

Dimensions to
UNI 2223-2229 NP16
standards



MOTORI ELETTRICI

Electric Motors

Pompa tipo Pump type	MOTORE ELETTRICO Electric Motor								
	250M			280S/280M			315S/315M		
	N°	H	Peso Weight	N°	H	Peso Weight	N°	H	Peso Weight
100-400	C13	413	334	C13	413	333			
125-400	C13	448	344	C13	448	344			
150-315	C13	448	395	C21	493	465			
150-400	C13	448	444	C21	493	502	C21	493	505
200-315	C13	488	362	C21	533	424	C21	533	420
200-400	C13	488	501	C21	533	560	C21	533	564
250-315	C21	578	593	C21	578	593	C21	578	591

Grandezza Frame size	Giri/min RPM	Giri/min RPM	Giri/min RPM
IEC	Kw	Kw	Kw
132S	5,5-7,5	5,5	3
132M		7,5	4 - 5,5
160M	11-15	11	7,5
160L	18,5	15	11
180M	22	18,5	
180L		22	15
200L	30-37	30	18,5 - 22
225S		37	
225M	45	45	30
250M	55	55	37
280S	75	75	
280M	90	90	
315S	110	110	
315M	132	132	

Disegno schematico. Dimensioni in mm con tolleranze secondo EN 735-1995.

Pesi indicativi in Kg, riferiti a pompe in esecuzione "F" ghisa escluso motore, non impegnativi.

Schematic drawing. Dimensions in mm with tolerances to EN 735-1995 standards.

Weights in Kgs, referred to pump in cast iron "F" construction without motor, not certified.

(1) Dimensioni in funzione della marca del motore elettrico installato.

Not certified dimensions according to installed motor manufacture

RIF. - Ref.: F.P./C.T.

SOSTITUISCE - Replaces: 2600.105.201.01.B

DATA - Date: SETTEMBRE 2004 - September 2004

N°.: 2600.105.201.02.B

DIMENSIONI D'INGOMBRO
 Overall dimensions
 POMPE CENTRIFUGHE MONOSTADIO
 Monostage centrifugal pumps
 SERIE
 Series **MCU-CH gr. 3-4 NS.**

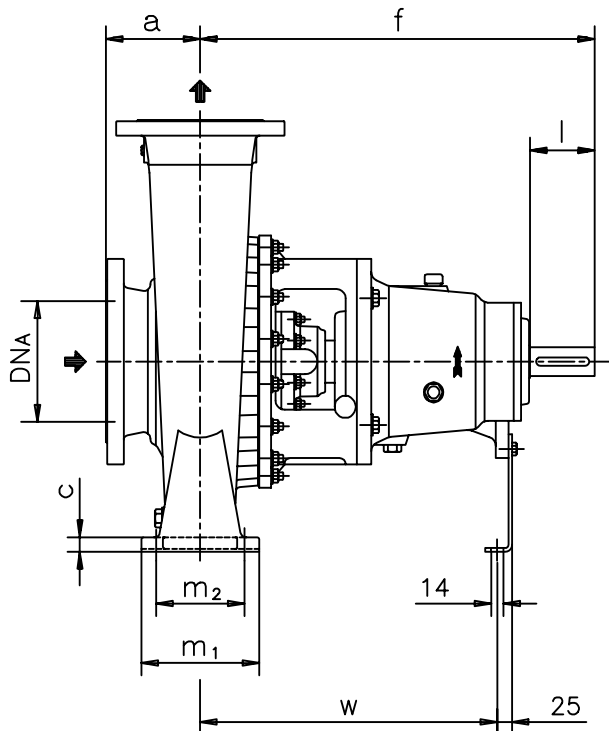


**TRAVAINI
 PUMPS USA**

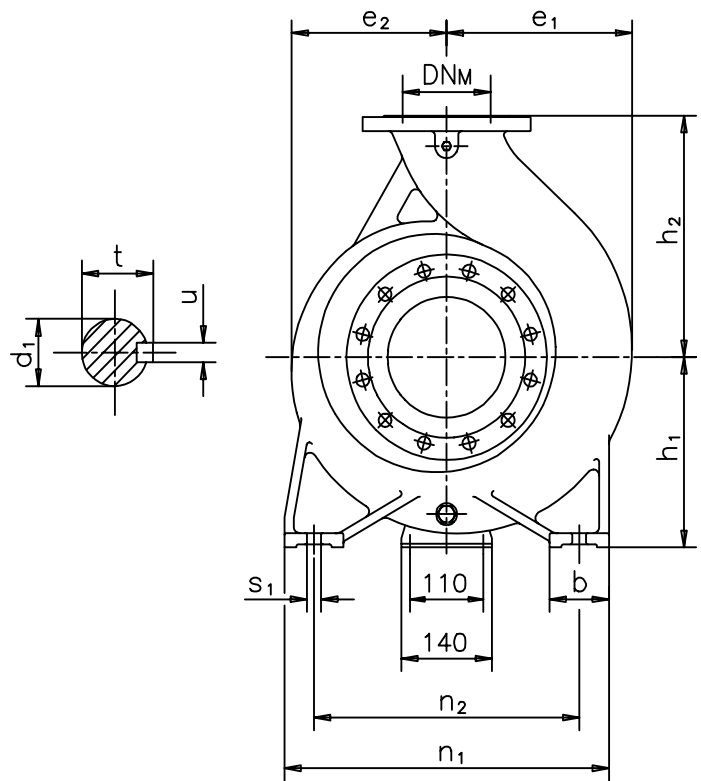
Liquid Ring & Rotary Vane Vacuum Pumps and Systems

200 Newsome Drive
 Yorktown, VA 23693
 1-800-535-4243
 www.Travaini.com

Versione ad **ASSE NUDO**
 Unificate secondo ISO 2858



BARESHAF construction
 According to ISO 2858 standards



Pompa tipo Pump type	Versione ad ASSE NUDO BARESHAF construction																			Peso Weight	
	DN _A	DN _M	a	f	h ₁	h ₂	b	c	m ₁	m ₂	n ₁	n ₂	s ₁	w	d ₁	l	t	u	e ₁		e ₂
100-400	125	100	140	530	280	355	80	22	200	150	500	400	22	370	42	110	45	12	288	265	205
125-400	150	125	140	530	315	400	100	22	200	150	500	400	22	370	42	110	45	12	306	275	215
150-315	200	150	160	670	315	400	100	24	200	150	550	450	24	500	48	110	52	14	315	275	265
150-400	200	150	160	670	315	450	100	24	200	150	550	450	24	500	48	110	52	14	335	295	310
*200-315	250	200	180	670	355	480	100	24	200	150	600	500	24	500	48	110	52	14	365	300	330
*200-400	250	200	180	670	355	500	100	24	200	150	600	500	24	500	48	110	52	14	375	320	370
*250-315	300	250	250	720	400	560	110	26	250	200	670	560	26	555	48	110	52	14	420	335	500

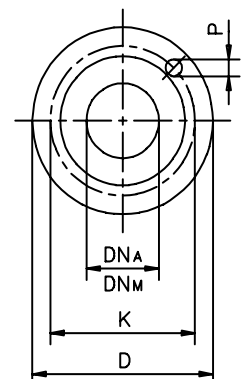
(*) Non unificate secondo ISO 2858.
 Not to ISO 2858 standards.

Disegno schematico. Dimensioni in mm con tolleranze secondo EN 735-1995.
 Pesì indicativi in Kg, riferiti a pompe in esecuzione "F" ghisa escluso motore, non impegnativi.
 Schematic drawing. Dimensions in mm with tolerances to EN 735-1995 standards.
 Weights in Kgs, referred to pump in cast iron "F" construction without motor, not certified.

DIMENSIONI FLANGE
 Flanges dimensions

DN _A -DN _M	D	K	P	N° fori holes
65	185	145	18	4
80	200	160	18	8
100	220	180	18	8
125	250	210	18	8
150	285	240	22	8
200	340	295	22	12
250	405	355	25	12
300	460	410	25	12

FLANGE:
 Dimensioni secondo
 UNI 2223-2229 PN16
FLANGES:
 Dimensions to
 UNI 2223-2229 NP16
 standards



RIF. - Ref.: F.P./C.T.

SOSTITUISCE - Replaces: 2600.100.201.02.A

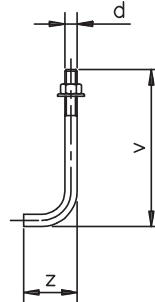
DATA - Date: NOVEMBRE 2004 - November 2004

N°.: 2600.100.201.03.A

Versione **ACCOPIATA (BASE - GIUNTO)**
COUPLED construction (BASEPLATE - COUPLING)

BASAMENTI
 Base plates

N°	B	C	E	F	L	M	G	øS	N°fori holes
C05	1200	420	800	200	480	-	380	18	4
C11	1350	500	950	200	570	-	452	18	4
C13	1650	640	1050	300	710		592	18	4
C21	1850	720	1350	250	792	675	670	22	6



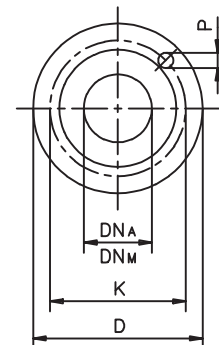
BULLONI DI FONDAZIONE
 (OPTIONAL)
 Foundation bolts

d	v	z
M14	280	50
M16	350	60
M20	400	80

DIMENSIONI FLANGE
 Flanges dimensions

DN _A -DN _M	D	K	P	N°fori holes
65	185	145	18	4
80	200	160	18	8
100	220	180	18	8
125	250	210	18	8
150	285	240	22	8
200	340	295	22	12
250	405	355	25	12
300	460	410	25	12

FLANGE:
 Dimensioni secondo
 UNI 2223-2229 PN16
 FLANGES:
 Dimensions according
 UNI 2223-2229 NP16
 standards



MOTORI ELETTRICI
 Electric Motors

Pompa tipo Pumps type	MOTORE ELETTRICO Electric Motor								
	250M			280S/280M			315S/315M		
	N°	H	Peso Weight	N°	H	Peso Weight	N°	H	Peso Weight
100-400	C13	413	329	C13	413	328			
125-400	C13	448	339	C13	448	338			
150-315	C13	448	389	C13	448	388			
150-400	C13	448	438	C13	448	433	C21	493	496
200-315	C13	488	455	C13	488	454	C21	533	515
200-400	C13	488	495	C13	488	494	C21	533	558
250-315	C21	578	587	C21	578	587	C21	578	585

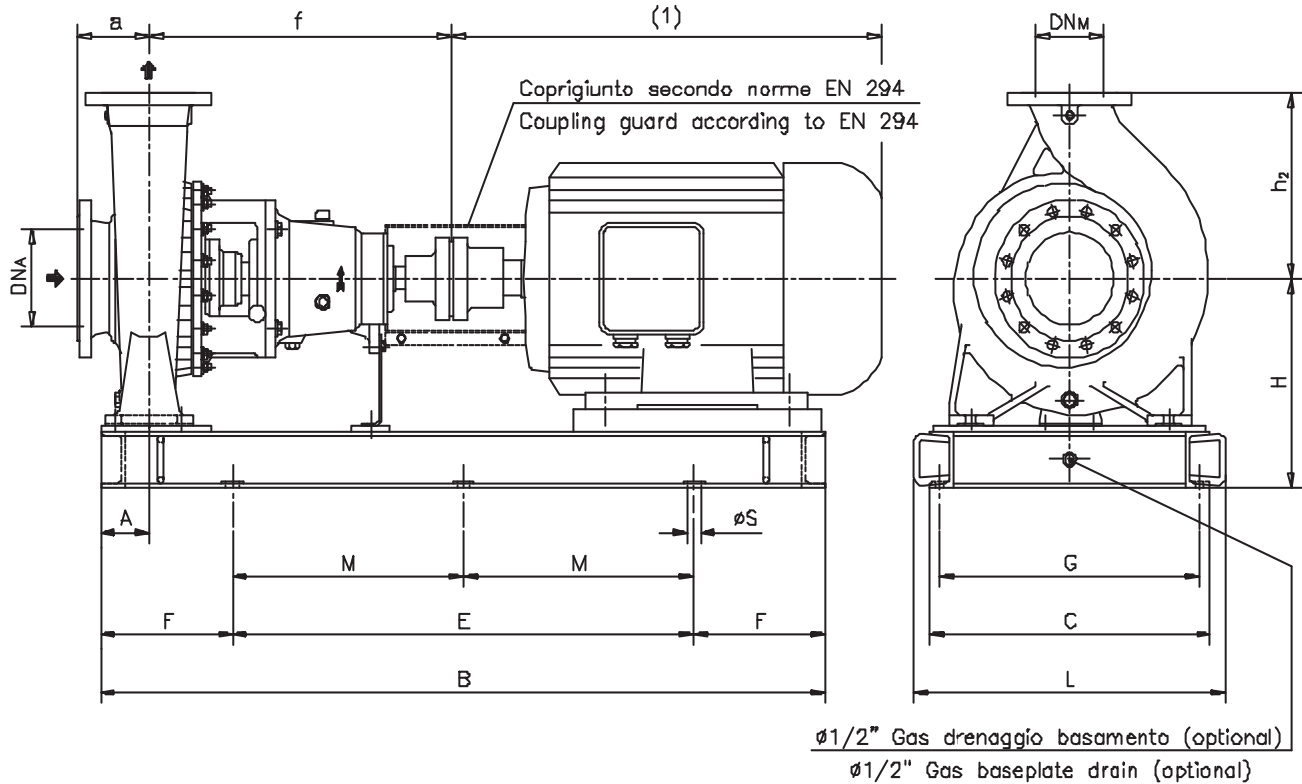
Grandezza Frame size	Giri/min RPM	Giri/min RPM	Giri/min RPM
	2900	1450	960
IEC	Kw	Kw	Kw
132S	5,5-7,5	5,5	3
132M		7,5	4 - 5,5
160M	11-15	11	7,5
160L	18,5	15	11
180M	22	18,5	
180L		22	15
200L	30-37	30	18,5 - 22
225S		37	
225M	45	45	30
250M	55	55	37
280S	75	75	
280M	90	90	
315S	110	110	
315M	132	132	

DISEGNO SCHEMATICO. DIMENSIONI IN MM CON TOLLERANZE SECONDO EN 735-1995 / Schematic drawing. Dimensions in mm with tolerances according to EN 735-1995 standards

PESI INDICATIVI IN KG, RIFERITI A POMPE IN ESECUZIONE "F" GHISA ESCLUSO MOTORE, NON IMPEGNATIVI. / Weights in Kgs, referred to pump in cast iron "F" construction without motor, not certified.

(1) DIMENSIONI IN FUNZIONE DELLA MARCA DEL MOTORE ELETTRICO INSTALLATO.
 Not certified dimensions according to installed motor manufacture.

Versione **ACCOPIATA (BASE - GIUNTO)**
COUPLED construction (BASEPLATE - COUPLING)



POMPE TIPO <i>Pumps type</i>	DIMENSIONI						MOTORE ELETTRICO <i>Electric Motor</i>														
	<i>Dimensions</i>						132S/132M			160M/160L			180M/180L			200L			225S/225M		
	DN _A	DN _M	a	f	h ₂	A	N°	H	Peso Weight	N°	H	Peso Weight	N°	H	Peso Weight	N°	H	Peso Weight	N°	H	Peso Weight
100-400	125	100	140	530	355	110	C13	413	332	C13	413	331	C13	413	331	C13	413	330	C13	413	330
125-400	150	125	140	530	400	110				C13	448	342	C13	448	340	C13	448	340	C13	448	340
150-315	200	150	160	670	400	110				C13	448	392	C13	448	390	C13	448	390	C13	448	390
150-400	200	150	160	670	450	110							C13	448	439	C13	448	439	C13	448	439
200-315	250	200	180	670	480	110							C13	488	458	C13	488	455	C13	488	455
200-400	250	200	180	670	500	110							C13	488	500	C13	488	498	C13	488	495
250-315	300	250	250	720	560	125							C21	578	590	C21	578	588	C21	578	588

DISEGNO SCHEMATICO. DIMENSIONI IN MM CON TOLLERANZE SECONDO EN 735-1995.
 Schematic drawing. Dimensions in mm with tolerances according to EN 735-1995 standards.

PESI INDICATIVI IN KG, RIFERITI A POMPE IN ESECUZIONE "F" GHISA ESCLUSO MOTORE, NON IMPEGNATIVI.
 Weights in Kgs, referred to pump in cast iron "F" construction without motor, not certified.

(1) DIMENSIONI IN FUNZIONE DELLA MARCA DEL MOTORE ELETTRICO INSTALLATO.
 Not certified dimensions according to installed motor manufacture.