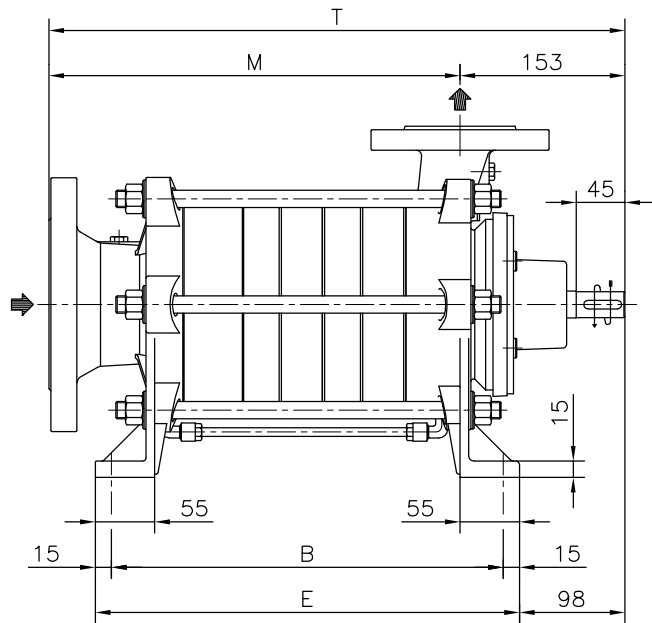


DIMENSIONE D'INGOMBRO / Overall dimensions
 POMPE CENTRIFUGHE AUTOADESCANTI
 Self-priming centrifugal pumps
 SERIE / Series
 TBA 500 / 2

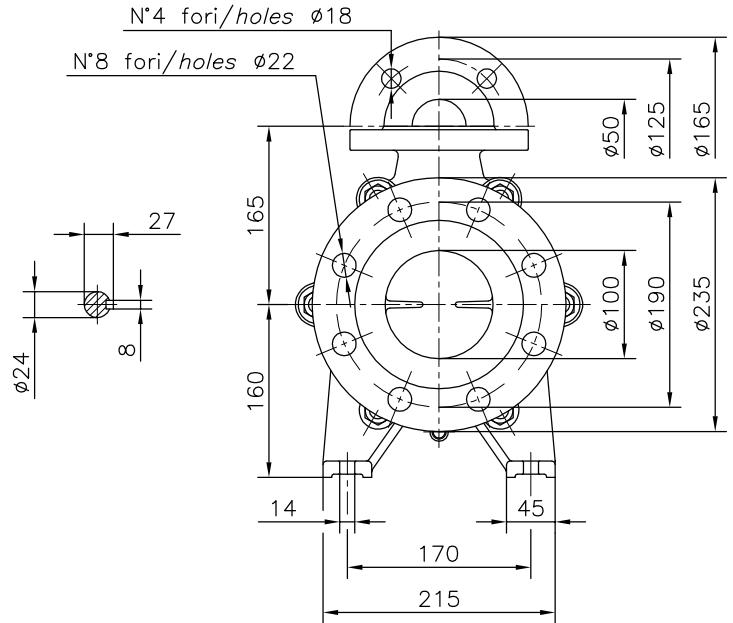


200 Newsome Drive
 Yorktown, VA 23693
 1-800-535-4243
 www.Travaini.com

Versione ad ASSE NUDO
 Esecuzione /R



BARESHAF construction
 Construction /R



POMPA TIPO Pump type	Versione ad ASSE NUDO			BARESHAF construction			
	DIMENSIONI Dimensions			/R		/R/T	
	M	B	E	T	Peso Weight	T ₁	Peso Weight
TBA 501	305	287	317	458	50	538	58
TBA 502	380	362	392	533	60	613	68
TBA 503	455	437	467	608	70	688	78
TBA 504	530	512	542	683	80	763	88
TBA 505	605	587	617	758	90	838	98
TBA 506	680	662	692	833	100	913	108
TBA 507	755	737	767	908	110	988	118
TBA 508	830	812	842	983	120	1063	128

FLANGE:
 Dimensioni secondo
 UNI 2223-2229 PN40

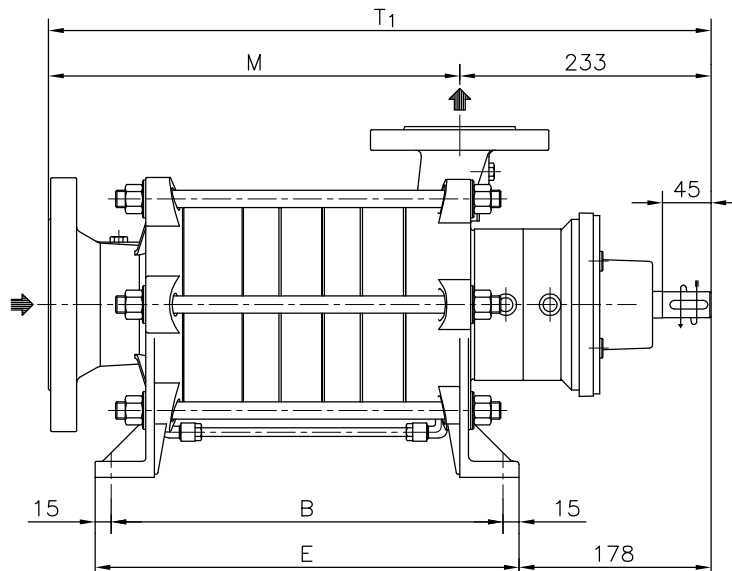
FLANGES:
 Dimensions to
 UNI 2223-2229 NP40 standards

Disegno schematico. Dimensioni
 in mm con tolleranze secondo
 EN 735-1995. Pesì indicativi in Kg,
 riferiti a pompe in ghisa escluso
 motore, non impegnativi.

Schematic drawing. Dimensions in
 mm with tolerances to
 EN 735-1995 standards. Weights in
 Kgs, referred to pumps in cast iron
 without motor, not certified.

Esecuzione /R/T

Construction /R/T



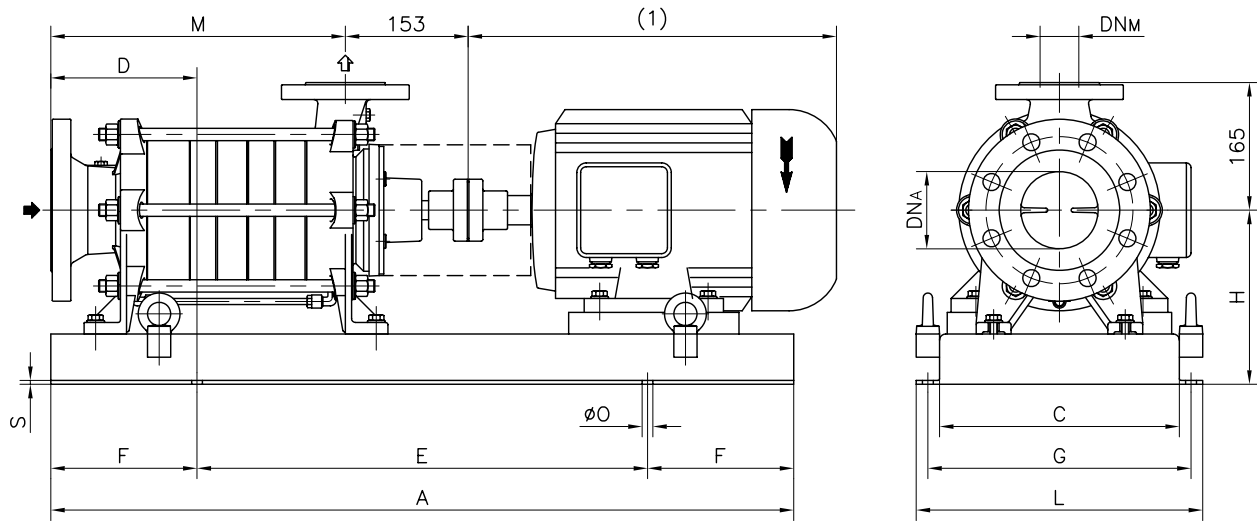
RIF. - Ref.: Z.A./C.T.

SOSTITUISCE - Replaces:

DATA - Date: DICEMBRE 98 - December 98

N°.: 1506.2L1.201.01

Versione **ACCOPPIATA (BASE-GIUNTO)**
COUPLED construction (BASEPLATE-COUPLING)



FLANGE: Dimensioni secondo UNI 2223-2229 PN40

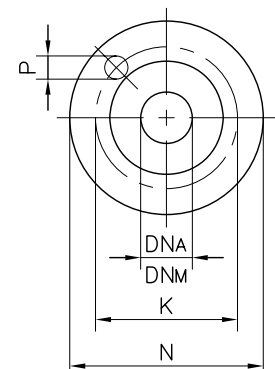
FLANGES: Dimensions to UNI 2223-2229 NP40 standards

POMPA TIPO Pump type	DIMENSIONI Dimensions			MOTORE ELETTRICO Electric motor																			
				100L				112M				132S / 132M				160M / 160L				180M / 180L			
	DNA	DNM	M	N°	D	H	Peso Weight	N°	D	H	Peso Weight	N°	D	H	Peso Weight	N°	D	H	Peso Weight	N°	D	H	Peso Weight
TBA 501	100	50	305	901	180	220	87	901	180	225	85	900	140	225	102	903	115	250	127				
TBA 502	100	50	380	900	223	225	114	900	140	225	112	900	180	225	112	903	155	250	137	907	110	280	120
TBA 503	100	50	455					900	185	225	122	900	215	225	122	903	190	250	147	907	180	280	130
TBA 504	100	50	530									903	170	250	160	903	228	250	157	041	185	310	160
TBA 505	100	50	605									903	205	250	170	906	175	260	185	041	225	310	170
TBA 506	100	50	680									906	155	260	198	906	215	260	195	034	175	310	197
TBA 507	100	50	755													906	250	260	200	034	255	310	207
TBA 508	100	50	830													034	333	290	215	034	333	310	217

POMPA TIPO Pump type	MOTORE ELETTRICO Electric motor							
	200L				225S / 225M			
	N°	D	H	Peso Weight	N°	D	H	Peso Weight
TBA 501								
TBA 502								
TBA 503								
TBA 504	041	200	330	165				
TBA 505	041	220	330	175	034	130	355	195
TBA 506	034	185	330	200	034	215	355	205
TBA 507	034	265	330	210	034	295	355	215
TBA 508	034	333	330	220	034	333	355	225

DIMENSIONI FLANGE Flanges dimensions				
DNA - DNM	N	K	P	N° fori holes
50	165	125	18	4
100	235	190	22	8

MOTORI ELETTRICI Electric Motors	
Grandezza Frame size IEC	Giri/min. RPM 1450
	Kw
100L	2,2 3
112M	4
132S	5,5
132M	7,5
160M	11
160L	15
180M	18,5
180L	22
200L	30
225S	37
225M	45



BASAMENTI Base plates									
N°	A	C	E	F	L	G	S	øO	N° fori holes
900	960	310	600	180	370	340	5	14	4
901	770	290	420	175	350	320	5	14	4
903	1170	350	770	200	410	380	6	14	4
906	1400	350	950	225	410	380	6	14	4
907	1200	420	900	150	510	470	6	18	4
034	1700	450	1100	300	590	540	7	18	4
041	1350	420	900	225	560	510	7	18	4

Disegno schematico. Dimensioni in mm con tolleranze secondo EN 735-1995. Pesì indicativi in Kg, riferiti a pompe in ghisa escluso motore, non impegnativi.
 Schematic drawing. Dimensions in mm with tolerances to EN 735-1995 standards. Weights in Kgs, referred to pumps in cast iron without motor, not certified.
 (1) Dimensioni in funzione della marca del motore installato. (1) Not certified dimensions according to installed motor manufacture.

DIMENSIONE D'INGOMBRO / Overall dimensions
 POMPE CENTRIFUGHE AUTOADESCANTI
 Self-priming centrifugal pumps
 SERIE / Series
 TBA 500 / 2



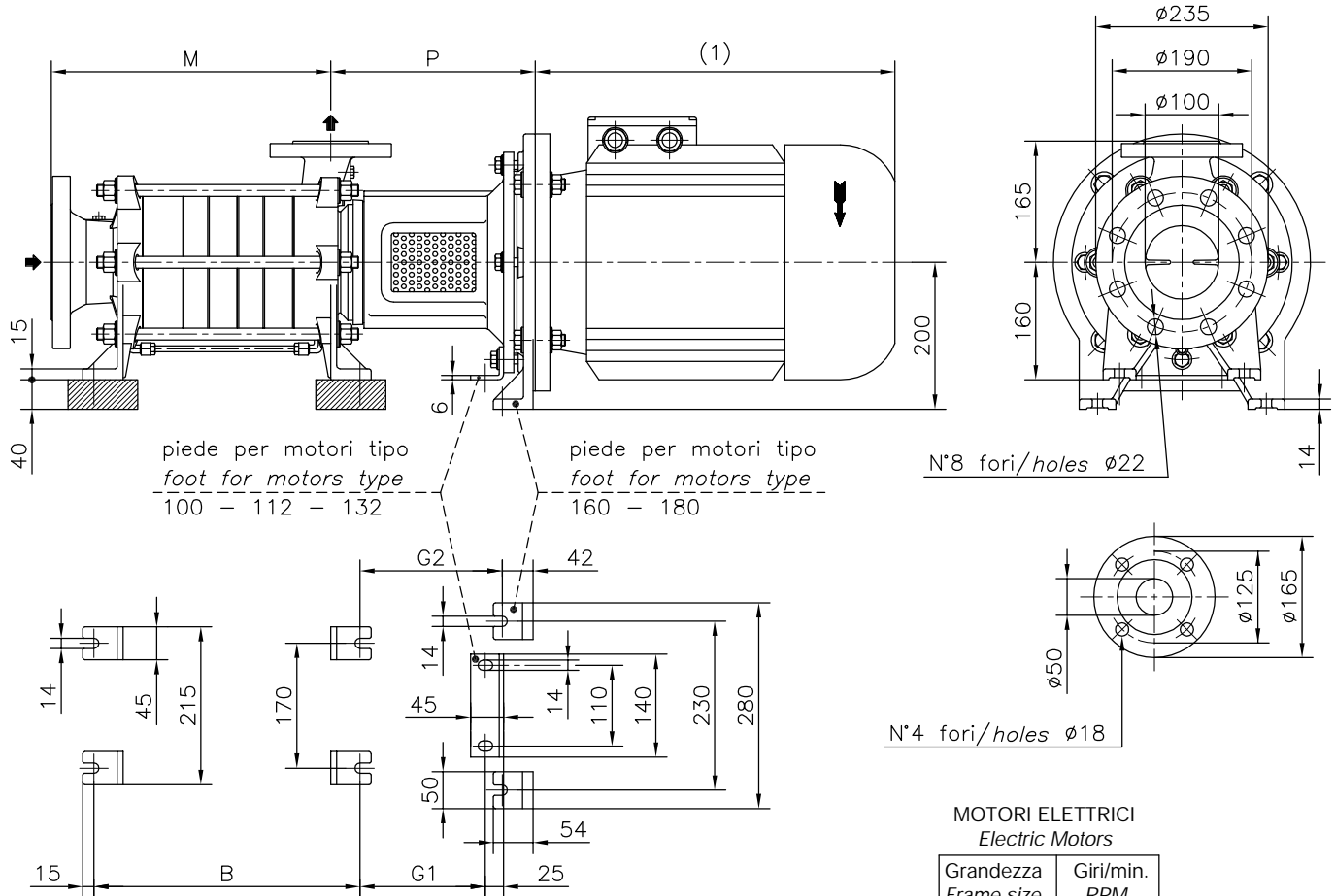
**TRAVAINI
 PUMPS USA**

Liquid Ring & Rotary Vane Vacuum Pumps and Systems

200 Newsome Drive
 Yorktown, VA 23693
 1-800-535-4243
 www.Travaini.com

Versione MONOBLOCCO /M
 Esecuzione /R

CLOSE - COUPLED /M construction
 Construction /R



MOTORI ELETTRICI
 Electric Motors

Grandezza Frame size IEC	Giri/min. RPM 1450
	Kw
100L	2,2 3
112M	4
132S	5,5
132M	7,5
160M	11
160L	15
180M	18,5
180L	22

FLANGE: Dimensioni secondo UNI 2223 - 2229 PN40
 FLANGES: Dimensions to UNI 2223-2229 NP40 standards

Disegno schematico. Dimensioni in mm con tolleranze secondo EN 735-1995.
 Pesi indicativi in Kg, riferiti a pompe in ghisa escluso motore, non impegnativi.
 Schematic drawing. Dimensions in mm with tolerances to EN 735-1995 standards.
 Weights in Kgs, referred to pumps in cast iron without motor, not certified.
 (1) Dimensione in funzione della marca del motore installato
 (1) Not certified dimensions according to installed motor manufacture.

POMPA TIPO Pump type	Versione MONOBLOCCO					CLOSE-COUPLED construction					
			motore motor		100 - 112	motore motor		132	motore motor		160 - 180
	M	B	P	G ₁	Peso Weight	P	G ₁	Peso Weight	P	G ₂	Peso Weight
TBA 501	305	287	228	147	60	249,5	171	62	278,5	193	74
TBA 502	380	362	228	147	70	249,5	171	72	278,5	193	84
TBA 503	455	437	228	147	80	249,5	171	82	278,5	193	94
TBA 504	530	512	228	147	90	249,5	171	92	278,5	193	104
TBA 505	605	587	228	147	100	249,5	171	102	278,5	193	114
TBA 506	680	662	228	147	110	249,5	171	112	278,5	193	124
TBA 507	755	737	228	147	120	249,5	171	122	278,5	193	134
TBA 508	830	812	228	147	130	249,5	171	132	278,5	193	144

RIF. - Ref.: Z.A./C.T.

SOSTITUISCE - Replaces:

DATA - Date: DICEMBRE 98 - December 98

N°.: 1506.2L2.201.01