

DIMENSIONE D'INGOMBRO / Overall dimensions
 POMPE CENTRIFUGHE AUTOADESCANTI
 Self-priming centrifugal pumps
 SERIE / Series
 TBA 290 - 300 - 310 / 2

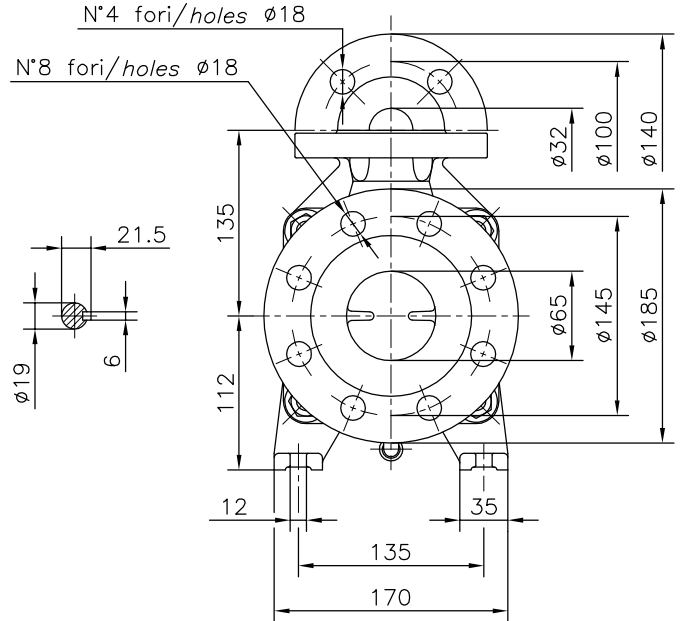
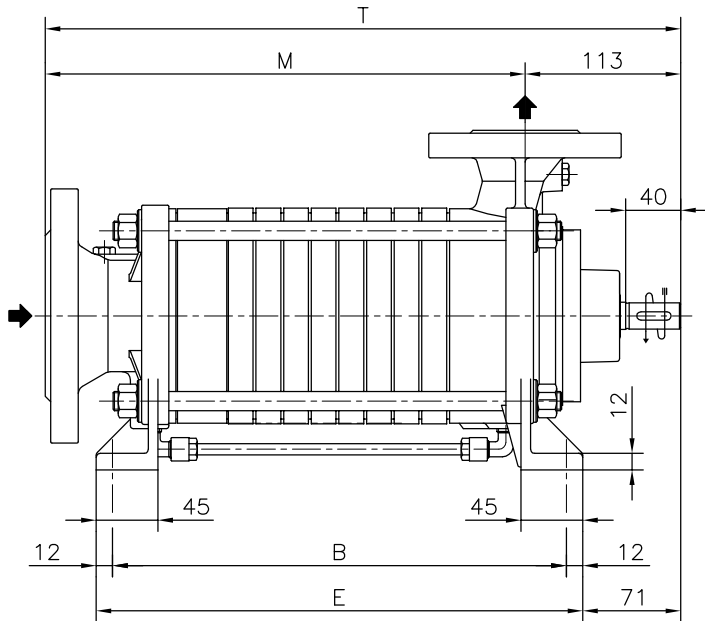


**TRAVAINI
 PUMPS USA**
 Liquid Ring & Rotary Vane Vacuum Pumps and Systems

200 Newsome Drive
 Yorktown, VA 23693
 1-800-535-4243
 www.Travaini.com

Versione ad ASSE NUDO
 Esecuzione /R

BARESHAFT construction
 Construction /R



POMPA TIPO <i>Pump type</i>	Versione ad ASSE NUDO			<i>BARESHAFT construction</i>			
	DIMENSIONI <i>Dimensions</i>			/R		/R/T	
	M	B	E	T	Peso <i>Weight</i>	T ₁	Peso <i>Weight</i>
TBA 291 - 301 - 311	228	209	233	341	24	415	29
TBA 292 - 302 - 312	268	249	273	381	27,5	455	32,5
TBA 293 - 303 - 313	308	289	313	421	31	495	36
TBA 294 - 304 - 314	348	329	353	461	34,5	535	39,5
TBA 295 - 305 - 315	388	369	393	501	38	575	43
TBA 296 - 306 - 316	428	409	433	541	41,5	615	46,5
TBA 297 - 307 - 317	468	449	473	581	45	655	50
TBA 298 - 308 - 318	508	489	513	621	48,5	695	53,5

FLANGE:
 Dimensioni secondo
 UNI 2223-2229 PN40

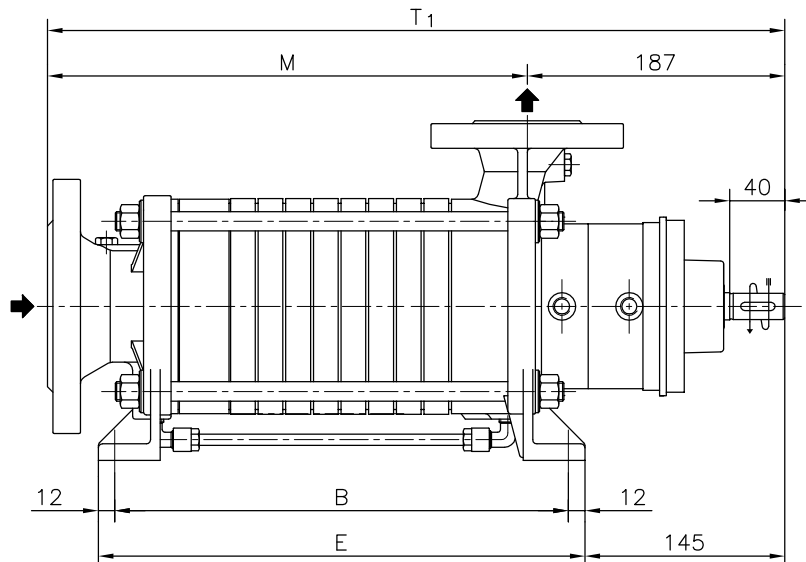
FLANGES:
 Dimensions to
 UNI 2223-2229 NP40 standards

Disegno schematico. Dimensioni in mm con tolleranze secondo EN 735-1995. Pesi indicativi in Kg, riferiti a pompe in ghisa escluso motore, non impegnativi.

Schematic drawing. Dimensions in mm with tolerances to EN 735-1995 standards. Weights in Kgs, referred to pumps in cast iron without motor, not certified.

Esecuzione /R/T

Construction /R/T



RIF. - Ref.: Z.A./C.T.

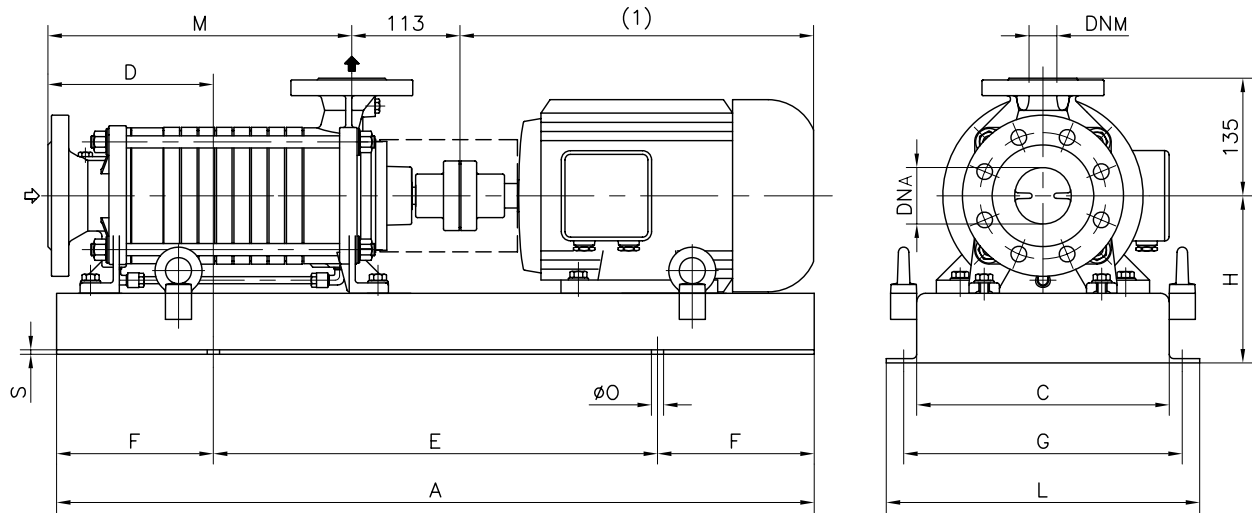
SOSTITUISCE - Replaces:

DATA - Date: DICEMBRE 98 - December 98

N°.: 1502 ÷ 4.2L1.201.01



Versione **ACCOPPIATA (BASE-GIUNTO)**
COUPLED construction (BASEPLATE-COUPLING)



FLANGE: Dimensioni secondo UNI 2223-2229 PN40

FLANGES: Dimensions to UNI 2223-2229 NP40 standards

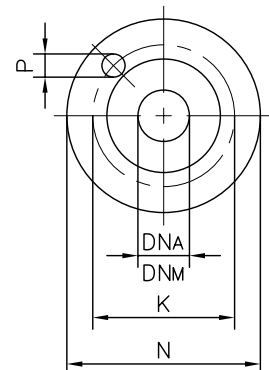
POMPA TIPO Pump type	DIMENSIONI Dimensions			MOTORE ELETTRICO Electric motor																				
				80M			90S / 90L			100L			112M			132S / 132M								
	DNA	DNM	M	N°	D	H	Peso Weight	N°	D	H	Peso Weight	N°	D	H	Peso Weight	N°	D	H	Peso Weight	N°	D	H	Peso Weight	
TBA 291 - 301 - 311	65	32	228	902	120	162	42	902	150	162	49	902	155	162	44	901	175	172	47					
TBA 292 - 302 - 312	65	32	268					901	175	172	58	901	175	172	55	901	175	172	52					
TBA 293 - 303 - 313	65	32	308					901	175	172	62	901	190	172	59	901	190	172	56	900	180	197	69	
TBA 294 - 304 - 314	65	32	348									901	210	172	60	901	210	172	58	900	180	197	73	
TBA 295 - 305 - 315	65	32	388									900	180	177	70	900	180	177	68	900	180	197	76	
TBA 296 - 306 - 316	65	32	428									900	180	177	74	900	180	177	72	900	180	197	80	
TBA 297 - 307 - 317	65	32	468										900	180	177	77	900	200	177	77	900	200	197	83
TBA 298 - 308 - 318	65	32	508										900	180	177	81	900	215	177	81	900	215	197	87

POMPA TIPO Pump type	DIMENSIONI Dimensions			160M / 160L			
				N°	D	H	Peso Weight
TBA 291 - 301 - 311	65	32	228				
TBA 292 - 302 - 312	65	32	268				
TBA 293 - 303 - 313	65	32	308				
TBA 294 - 304 - 314	65	32	348	903	200	250	94
TBA 295 - 305 - 315	65	32	388	903	200	250	98
TBA 296 - 306 - 316	65	32	428	903	200	250	101
TBA 297 - 307 - 317	65	32	468	903	200	250	105
TBA 298 - 308 - 318	65	32	508	903	200	250	108

DIMENSIONI FLANGE Flanges dimensions				
DNA - DNM	N	K	P	N° fori holes
32	140	100	18	4
65	185	145	18	8

**MOTORI ELETTRICI
 Electric Motors**

Grandezza Frame size IEC	Giri/min. RPM
	1450
	Kw
80M	0,55 0,75
90S	1,1
90L	1,5
100L	2,2 3
112M	4
132S	5,5
132M	7,5
160M	11
160L	15



BASAMENTI Base plates									
N°	A	C	E	F	L	G	S	ØO	N° fori holes
900	960	310	600	180	370	340	5	14	4
901	770	290	420	175	350	320	5	14	4
902	610	210	370	120	270	240	5	14	4
903	1170	350	770	200	410	380	6	14	4

Disegno schematico. Dimensioni in mm con tolleranze secondo EN 735-1995. Pesì indicativi in Kg, riferiti a pompe in ghisa escluso motore, non impegnativi.
 Schematic drawing. Dimensions in mm with tolerances to EN 735-1995 standards. Weights in Kgs, referred to pumps in cast iron without motor, not certified.
 (1) Dimensioni in funzione della marca del motore installato. (1) Not certified dimensions according to installed motor manufacture.

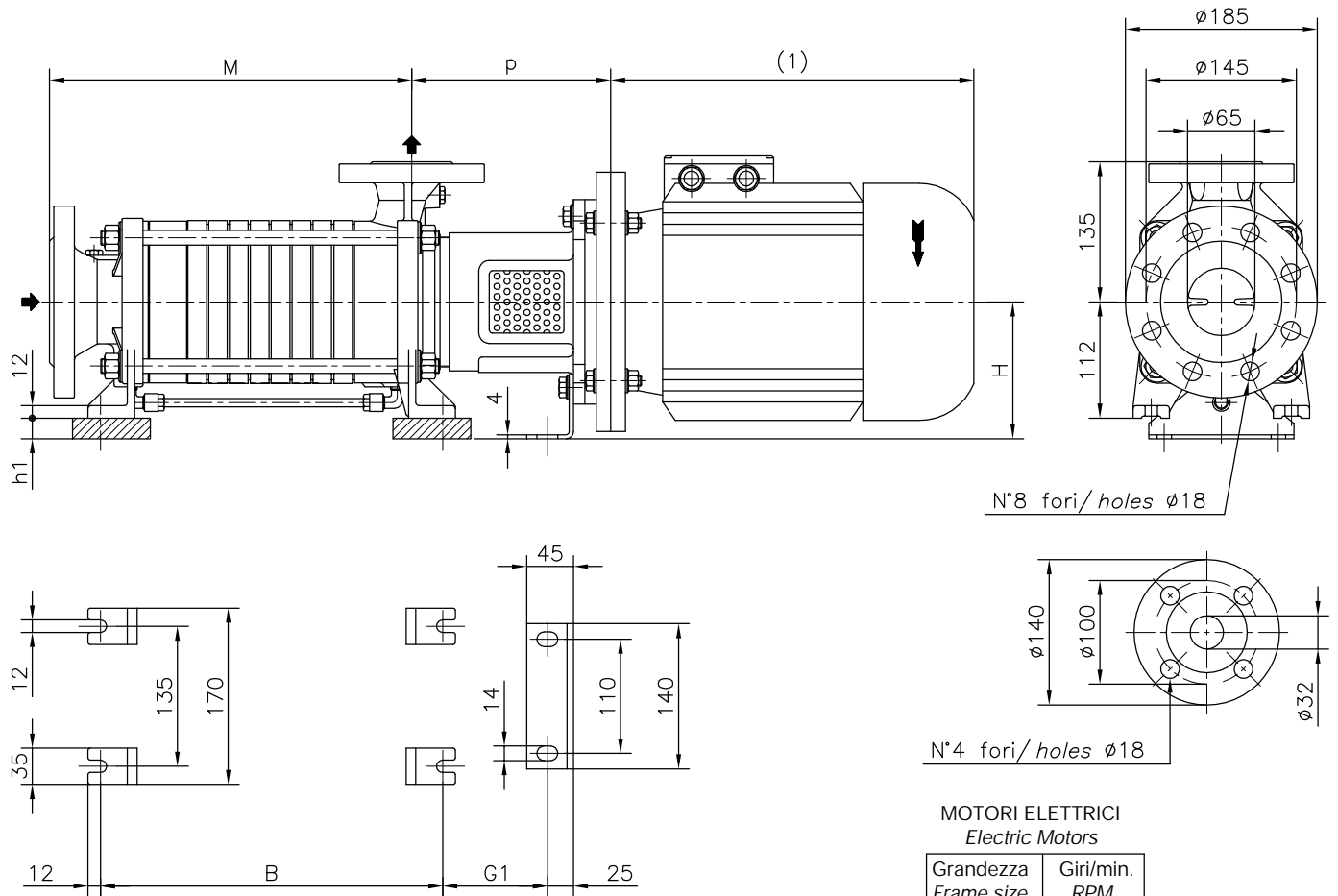
DIMENSIONE D'INGOMBRO / Overall dimensions
 POMPE CENTRIFUGHE AUTOADESCANTI
 Self-priming centrifugal pumps
 SERIE / Series
 TBA 290 - 300 - 310 / 2



200 Newsome Drive
 Yorktown, VA 23693
 1-800-535-4243
 www.Travaini.com

Versione MONOBLOCCO /M
 Esecuzione /R

CLOSE - COUPLED /M construction
 Construction /R



FLANGE: Dimensioni secondo UNI 2223 - 2229 PN40
 FLANGES: Dimensions to UNI 2223-2229 NP40 standards

Disegno schematico. Dimensioni in mm con tolleranze secondo EN 735-1995.
 Pesì indicativi in Kg, riferiti a pompe in ghisa escluso motore, non impegnativi.
 Schematic drawing. Dimensions in mm with tolerances to EN 735-1995 standards.
 Weights in Kgs, referred to pumps in cast iron without motor, not certified.
 (1) Dimensione in funzione della marca del motore installato
 (1) Not certified dimensions according to installed motor manufacture.

MOTORI ELETTRICI
 Electric Motors

Grandezza Frame size IEC	Giri/min. RPM 1450
	Kw
80M	0,55 0,75
90S	1,1
90L	1,5
100L	2,2 3
112M	4
132S	5,5
132M	7,5

POMPA TIPO Pump type	Versione MONOBLOCCO							CLOSE-COUPLED construction											
			motore motor		80 - 90					motore motor		100 - 112			motore motor		132		
	M	B	P	G ₁	H	Peso Weight	P	G ₁	H	h ₁	Peso Weight	P	G ₁	H	h ₁	Peso Weight			
TBA 291 - 301 - 311	228	209	167	102	112	28,5	192	102	132	20	34,5	197	102	152	40	37,5			
TBA 292 - 302 - 312	268	249	167	102	112	32	192	102	132	20	38	197	102	152	40	41			
TBA 293 - 303 - 313	308	289	167	102	112	35,5	192	102	132	20	41,5	197	102	152	40	44,5			
TBA 294 - 304 - 314	348	329	167	102	112	39	192	102	132	20	45	197	102	152	40	48			
TBA 295 - 305 - 315	388	369	167	102	112	42,5	192	102	132	20	48,5	197	102	152	40	51,5			
TBA 296 - 306 - 316	428	409	167	102	112	46	192	102	132	20	52	197	102	152	40	55			
TBA 297 - 307 - 317	468	449	167	102	112	49,5	192	102	132	20	55,5	197	102	152	40	58,5			
TBA 298 - 308 - 318	508	489	167	102	112	53	192	102	132	20	59	197	102	152	40	62			
RIF. - Ref.:	Z.A./C.T.							SOSTITUISCE - Replaces:											
DATA - Date:	GENNAIO 99 - January 99							N°.: 1502 ÷ 4.2L2.201.01											