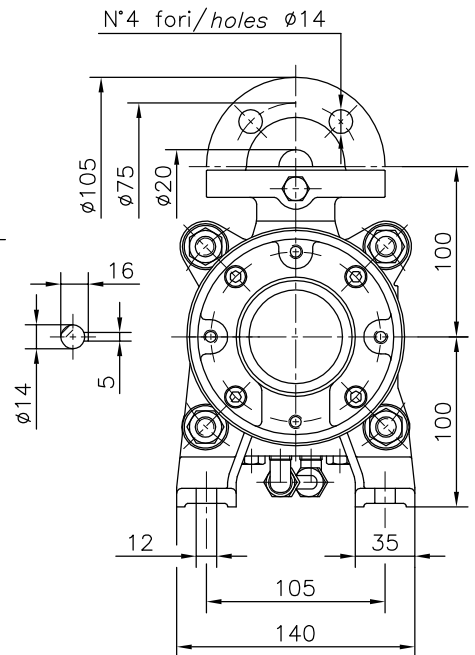
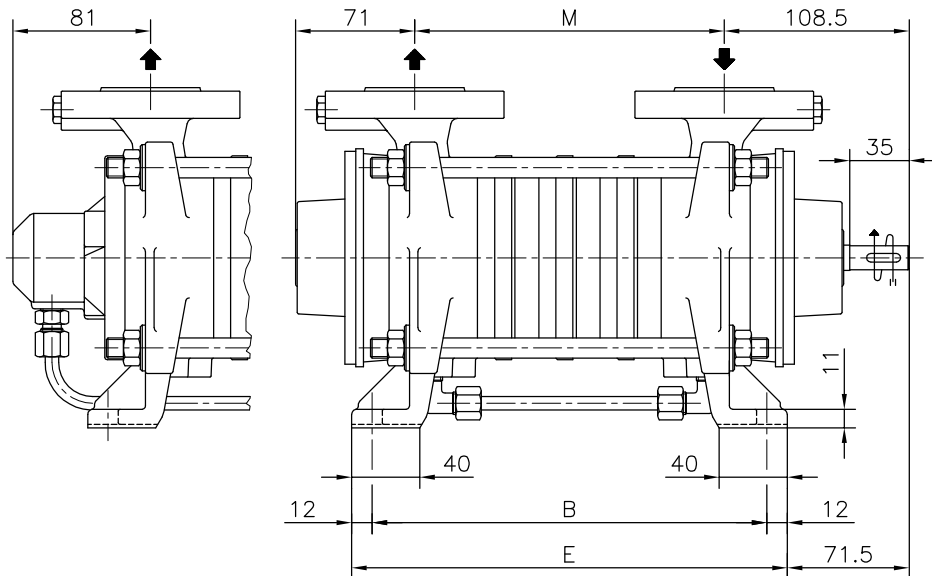


Versione ad ASSE NUDO BARESHAFT construction

Esecuzione /R
 Construction /R

Esecuzione /C Construction /C



POMPA TIPO <i>Pump type</i>	Versione ad ASSE NUDO			BARESHAFT construction		
	DIMENSIONI <i>Dimensions</i>			/R - /C	/R/T	/C/T
	M	B	E	Peso <i>Weight</i>	Peso <i>Weight</i>	Peso <i>Weight</i>
TBH 201	108	158	182	14,5	19,5	24,5
TBH 202	142	192	216	16	21	26
TBH 203	176	226	250	17,5	22,5	27,5
TBH 204	210	260	284	19	24	29
TBH 205	244	294	318	20,5	25,5	30,5
TBH 206	278	328	352	22	27	32
TBH 207	312	362	386	23,5	28,5	33,5
TBH 208	346	396	420	25	30	35

FLANGE:
 Dimensioni secondo
 UNI 2223-2229 PN40

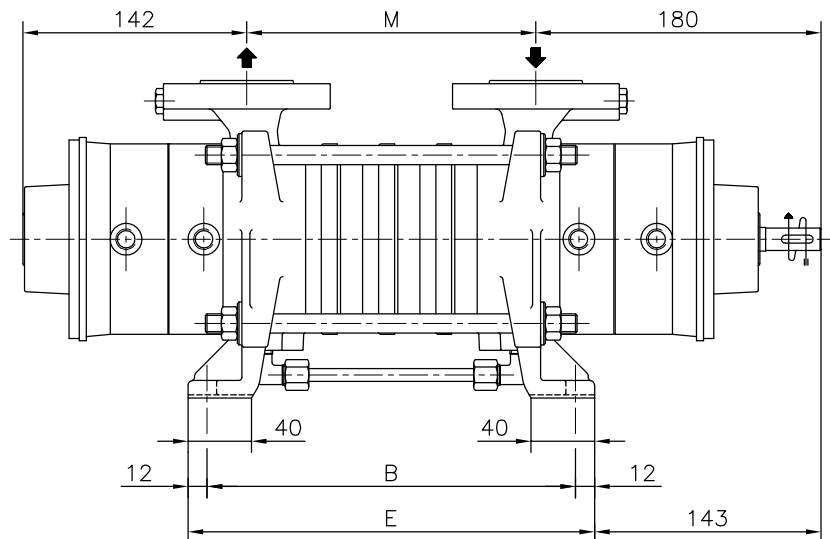
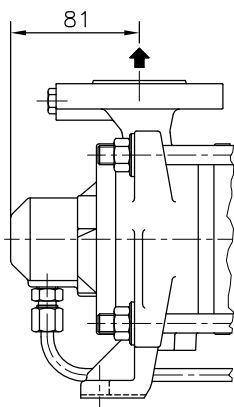
FLANGES:
 Dimensions to
 UNI 2223-2229 NP40 standards

Disegno schematico. Dimensioni in mm con tolleranze secondo EN 735-1995. Pesi indicativi in Kg, riferiti a pompe in ghisa escluso motore, non impegnativi.

Schematic drawing. Dimensions in mm with tolerances to EN 735-1995 standards. Weights in Kgs, referred to pumps in cast iron without motor, not certified.

Esecuzione /R/T
 Construction /R/T

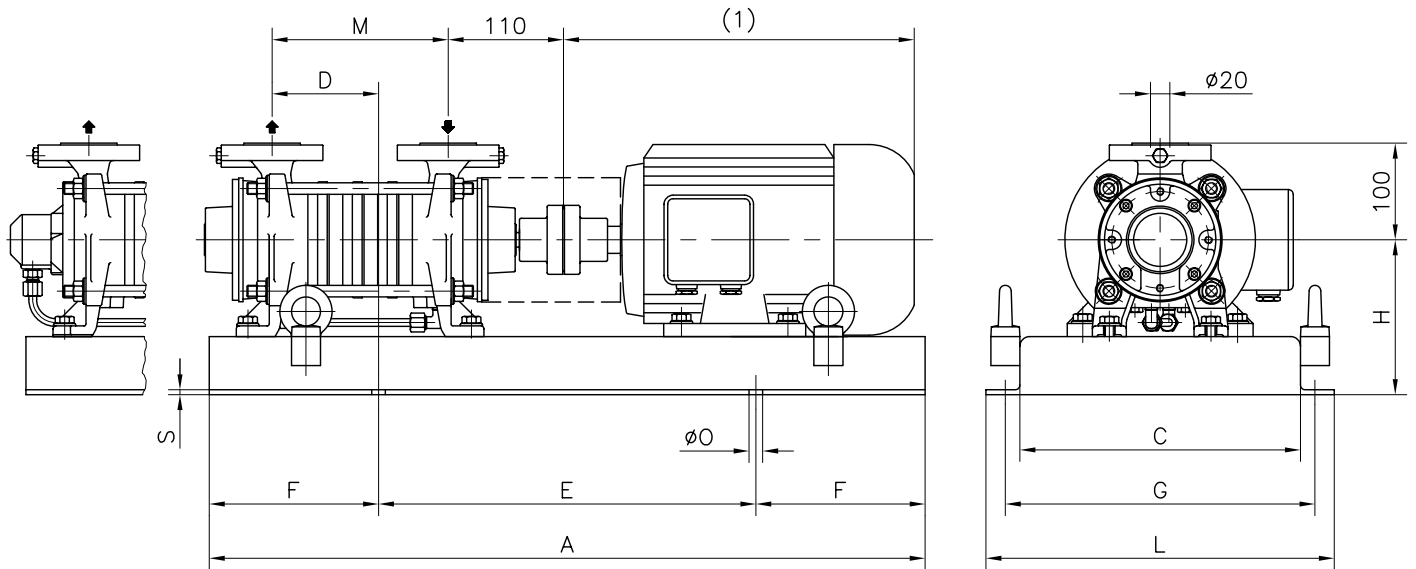
Esecuzione /C/T Construction /C/T





Versione **ACCOPPIATA (BASE-GIUNTO)**
COUPLED construction (BASEPLATE-COUPLING)

Esecuzione /R Esecuzione /C Construction /C
 Construction /R



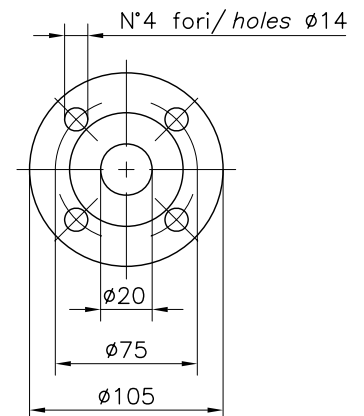
FLANGE: Dimensioni secondo UNI 2223-2229 PN40

FLANGES: Dimensions to UNI 2223-2229 NP40 standards

POMPA TIPO Pump type	M	MOTORE ELETTRICO Electric motor																				
		80M				90S / 90L				100L				112M				132S / 132M				
		N°	D	H	Peso Weight	N°	D	H	Peso Weight	N°	D	H	Peso Weight	N°	D	H	Peso Weight	N°	D	H	Peso Weight	
TBH 201	108	902	35	150	32	902	60	150	30.5													
TBH 202	142	902	50	150	33.5	902	75	150	32	902	80	150	32									
TBH 203	176	902	65	150	35	902	80	150	33.5	901	80	160	33.5									
TBH 204	210					901	90	160	35	901	100	160	35	901	100	172	37					
TBH 205	244					901	105	160	36.5	901	115	160	36.5	901	115	172	38.5					
TBH 206	278					901	125	160	38	901	135	160	38	901	135	172	40	900	80	197	52.5	
TBH 207	312					901	120	160	39.5	901	130	160	39.5	901	135	172	41.5	900	95	197	53.5	
TBH 208	346									900	60	165	47.5	900	60	177	49.5	900	110	197	55	

MOTORI ELETTRICI
 Electric Motors

Grandezza Frame size IEC	Giri/min. RPM
	Kw
80M	1450
	0,55 0,75
90S	1450
	1,1
90L	1450
	1,5
100L	1450
	2,2 3
112M	1450
	4
132S	1450
	5,5
132M	1450
	7,5



BASAMENTI Base plates									
N°	A	C	E	F	L	G	S	ØO	N° fori holes
900	960	310	600	180	370	340	5	14	4
901	770	290	420	175	350	320	5	14	4
902	610	210	370	120	270	240	5	14	4

Disegno schematico. Dimensioni in mm con tolleranze secondo EN 735-1995. Pesì indicativi in Kg, riferiti a pompe in ghisa escluso motore, non impegnativi.
 Schematic drawing. Dimensions in mm with tolerances to EN 735-1995 standards. Weights in Kgs, referred to pumps in cast iron without motor, not certified.
 (1) Dimensioni in funzione della marca del motore installato. (1) Not certified dimensions according to installed motor manufacture.

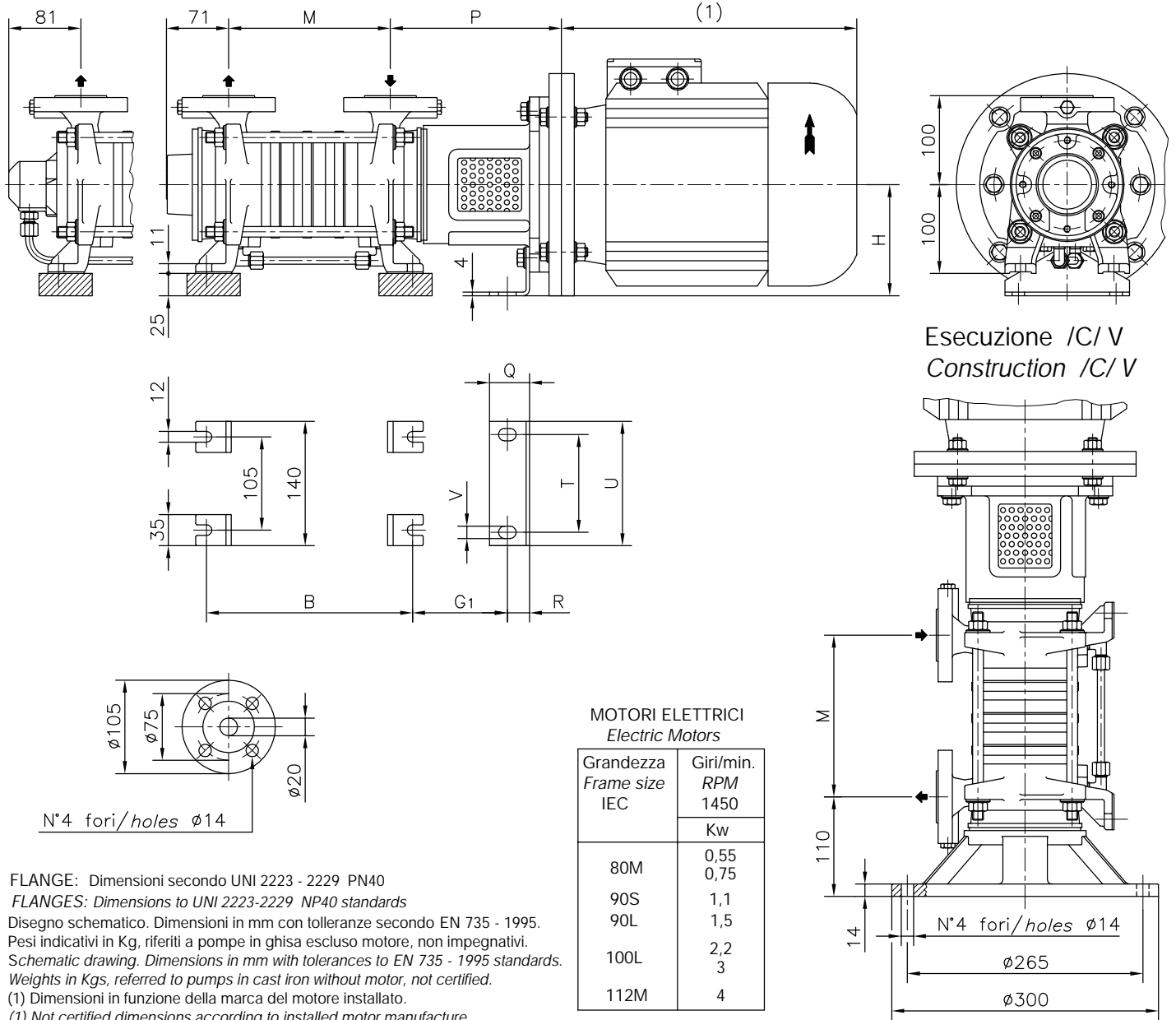
DIMENSIONE D'INGOMBRO / Overall dimensions
 POMPE CENTRIFUGHE AUTOADESCANTI
 Self-priming centrifugal pumps
 SERIE / Series
 TBH 200 / 1



200 Newsome Drive
 Yorktown, VA 23693
 1-800-535-4243
 www.Travaini.com

Versione MONOBLOCCO/M CLOSE - COUPLED/M construction

Esecuzione /R Esecuzione /C Construction /C
 Construction /R



POMPA TIPO Pump type	Versione MONOBLOCCO										CLOSE-COUPLED construction										
			motore motor 80 - 90								Peso Weight		motore motor 100 - 112								Peso Weight
	M	B	P	G ₁	H	R	T	U	V	Q	P	G ₁	H	R	T	U	V	Q			
TBH 201	108	158	166	110	100	20	90	120	12	33	19	191	105	125	25	110	140	14	45	25	
TBH 202	142	192	166	110	100	20	90	120	12	33	20.5	191	105	125	25	110	140	14	45	26.5	
TBH 203	176	226	166	110	100	20	90	120	12	33	22	191	105	125	25	110	140	14	45	28	
TBH 204	210	260	166	110	100	20	90	120	12	33	23.5	191	105	125	25	110	140	14	45	29.5	
TBH 205	244	294	166	110	100	20	90	120	12	33	25	191	105	125	25	110	140	14	45	31	
TBH 206	278	328	166	110	100	20	90	120	12	33	26.5	191	105	125	25	110	140	14	45	32.5	
TBH 207	312	362	166	110	100	20	90	120	12	33	28	191	105	125	25	110	140	14	45	34	
TBH 208	346	396	166	110	100	20	90	120	12	33	29.5	191	105	125	25	110	140	14	45	35.5	

RIF. - Ref.: Z.A./C.T.

SOSTITUISCE - Replaces:

DATA - Date: APRILE 99 - April 99

N°.: 1031.1L2.201.01