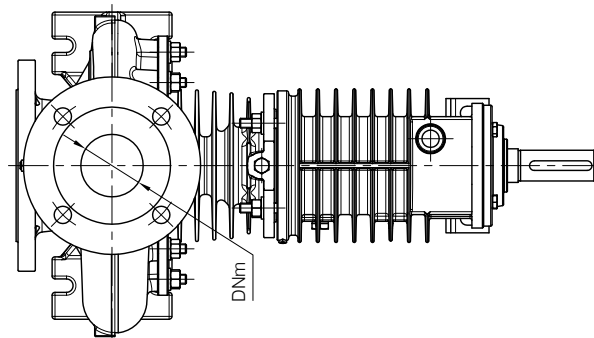
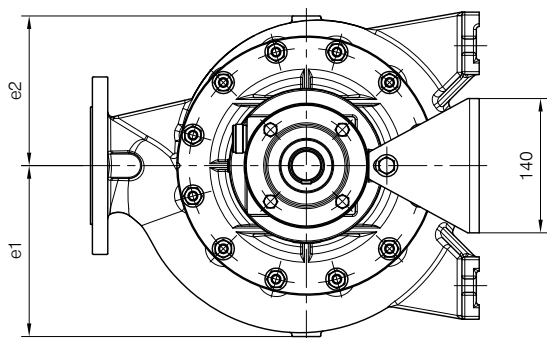
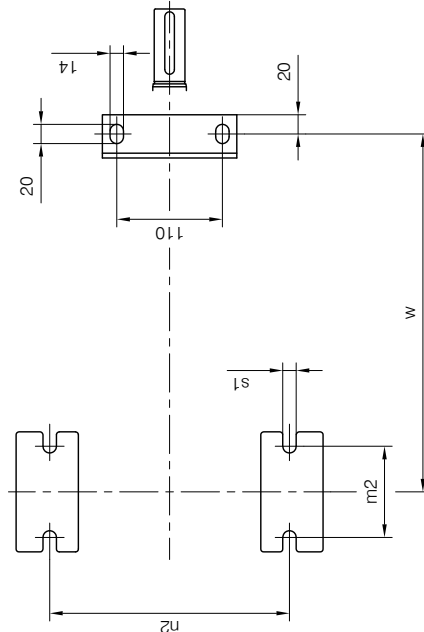
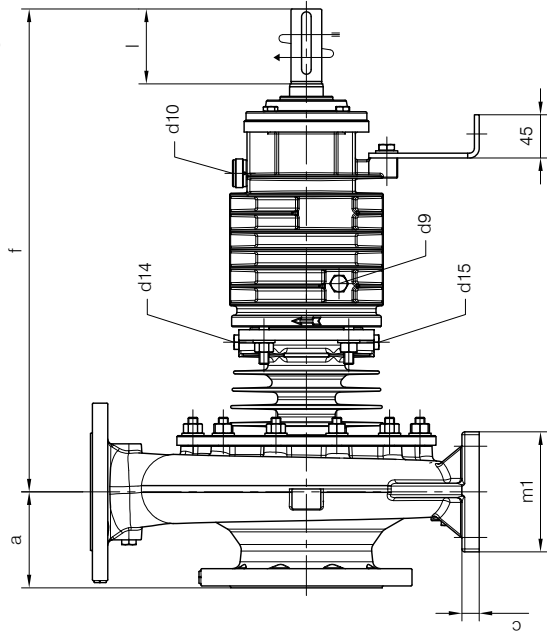
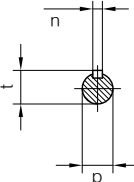
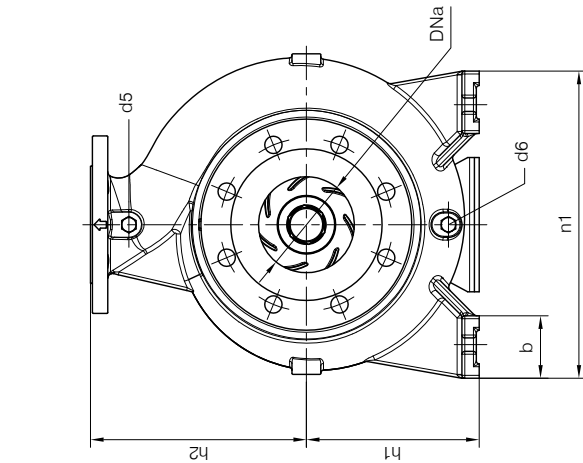


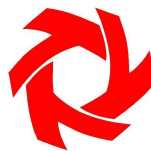
BARESHAF construction
According to ISO 2858 standards

Versione ad **ASSE NUDO**
Unificate secondo ISO 2858



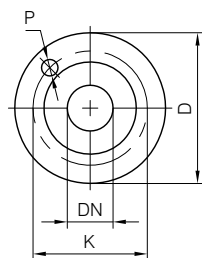
- d5 Attacco tappato - per manovotometro (vedi tabella)
Plugged connection - for manovacuum gauge (see table)
- d6 Attacco tappato - per scarico corpo pompa (vedi tabella)
Plugged connection - for pump casing drain (see table)
- d9 Attacco tappato G 1/4 - per scarico olio cuscinetti supporto
G 1/4 plugged connection - bearings oil drain from housing
- d10 Tappo sfiato e carico olio G 1/2 - con astina di livello
G 1/2 plug with dipstick - bearings oil filling into housing
- d14 Attacco tappato G 1/4 - per sfiato camera tenuta
G 1/4 plugged connection - air-hole mechanical seal chamber
- d15 Attacco tappato G 1/4 - per scarico camera tenuta
G 1/4 plugged connection - discharge for mechanical seal chamber

Connessioni filettate secondo UNI EN ISO 228-1. Disegno schematico. Dimensioni in mm con tolleranze secondo EN 735-1995. Pesì indicativi in Kg, riferiti a pompe in ghisa escluso motore, non impegnativi.
Threaded connection according to UNI EN ISO 228-1. Schematic drawing. Dimensions in mm with tolerances according to EN 735-1995 standards. Weights in Kgs, referred to pumps in cast iron without motor, not binding.



POMPA TIPO Pump type	Dimensioni costruttive Construction dimensions																				Peso Weight	
	gr.	DNa	DNm	a	f	h1	h2	b	c	m1	m2	n1	n2	s1	w	d	l	t	u	e1		e2
25-125	1	40	25	80	385	112	140	50	15	100	70	190	140	14	285	24	50	27	8	95	90	23
25-160	1	40	25	80	385	132	160	50	16	100	70	240	190	14	285	24	50	27	8	110	108	30
25-200	1	40	25	80	385	160	180	50	16	100	70	240	190	14	285	24	50	27	8	133	127	34
32-125	1	50	32	80	385	112	140	50	15	100	70	190	140	14	285	24	50	27	8	105	91	25
32-160	1	50	32	80	385	132	160	50	16	100	70	240	190	14	285	24	50	27	8	125	110	28
32-200	1	50	32	80	385	160	180	50	16	100	70	240	190	14	285	24	50	27	8	140	130	37
40-125	1	65	40	80	385	112	140	50	15	100	70	210	160	14	285	24	50	27	8	115	100	27
40-160	1	65	40	80	385	132	160	50	16	100	70	240	190	14	285	24	50	27	8	130	115	32
40-200	1	65	40	100	385	160	180	50	16	100	70	265	212	14	285	24	50	27	8	146	135	36
40-250	2	65	40	100	500	180	225	65	18	125	95	320	250	14	370	32	80	35	10	176	163	62
50-125	1	80	50	100	385	132	160	50	16	100	70	240	190	14	285	24	50	27	8	130	110	29
50-160	1	80	50	100	385	160	180	50	16	100	70	265	212	14	285	24	50	27	8	147	125	35
50-200	1	80	50	100	385	160	200	50	16	100	70	265	212	14	285	24	50	27	8	161	146	39
50-250	2	80	50	125	500	180	225	65	18	125	95	320	250	14	370	32	80	35	10	183	169	66
65-125	1	100	65	100	385	160	180	65	16	125	95	280	212	14	285	24	50	27	8	145	117	54
*65-160	1	100	65	100	395	160	200	65	16	125	95	280	212	14	295	24	48	27	8	160	130	57
65-200	2	100	65	100	500	180	225	65	18	125	95	320	250	14	370	32	80	35	10	174	152	62
65-250	2	100	65	125	500	200	250	80	20	160	120	360	280	18	370	32	80	35	10	195	175	75
*80-160	1	125	80	125	395	180	225	65	16	125	95	320	250	14	295	24	48	27	8	186	142	62
80-200	2	125	80	125	500	180	250	65	18	125	95	345	280	14	370	32	80	35	10	188	158	63
80-250	2	125	80	125	500	225	280	80	20	160	120	400	315	18	370	32	80	35	10	225	185	82
100-200	2	125	100	125	500	200	280	80	20	160	120	360	280	18	370	32	80	35	10	211	170	78

(*)Non unificate secondo ISO 2858
 Not to ISO 2858 standards

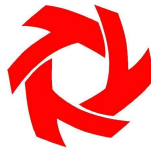


FLANGE: Dimensioni secondo UNI 2223 - 2229 PN16
 FLANGES: Dimensions to UNI 2223-2229 NP16 standards

Dimensioni flange Flanges dimensions				
DNa-DNm	D	K	P	N° fori holes
25	115	85	14	4
32	140	100	18	4
40	150	110	18	4
50	165	125	18	4
65	185	145	18	4
80	200	160	18	8
100	220	180	18	8
125	250	210	18	8

Conessioni Connections				
		gr.1	gr.2	
d5		G 1/4	G 1/4	
d6	Varianti - Variants	Pompa - Pump	G 1/4	G 1/4
			25-125	G 1/8
		25-160	G 1/8	-
		100-200	-	G 1/2

DIMENSIONI D'INGOMBRO / Overall dimensions
 POMPA CENTRIFUGA MONOSTADIO
 Monostage centrifugal pump
 TIPO / Type
TCD /2-R gr.3

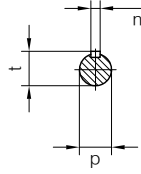
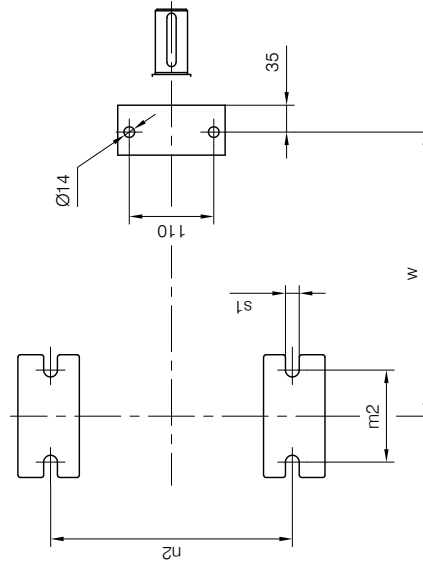
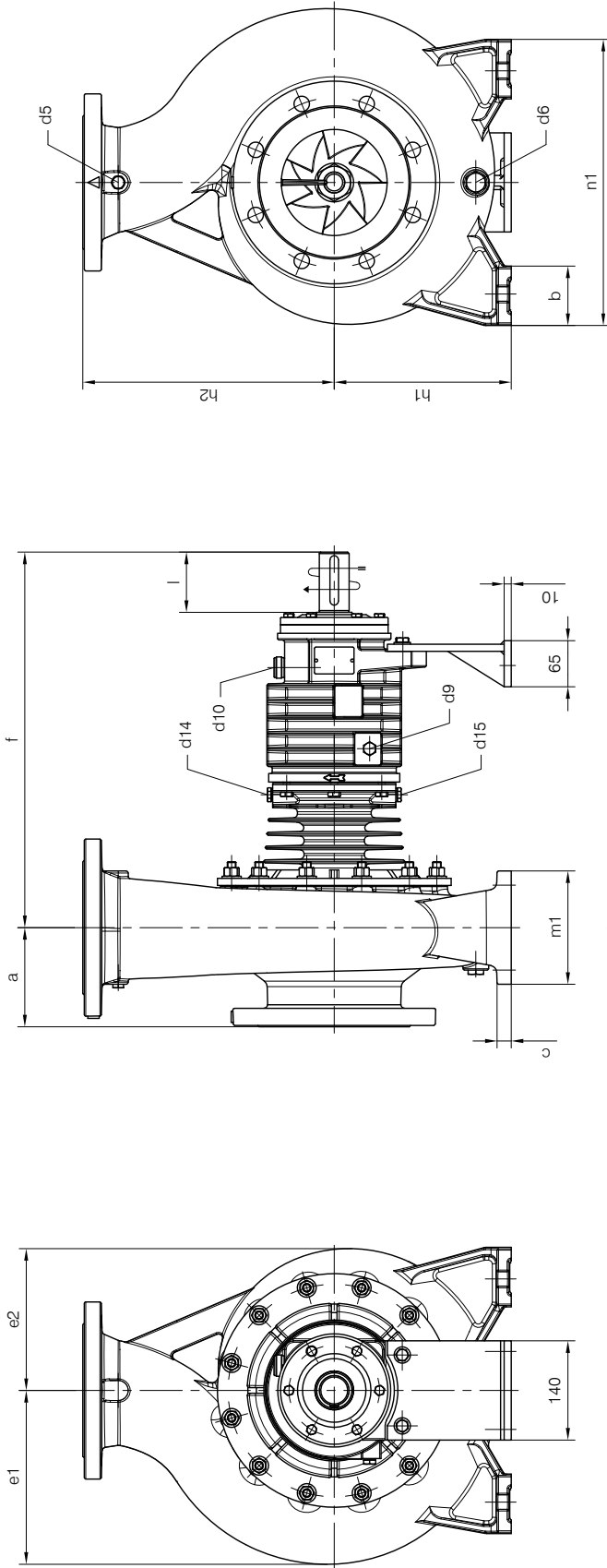


**TRAVAINI
 PUMPS USA**
 Liquid Ring & Rotary Vane Vacuum Pumps and Systems

200 Newsome Drive
 Yorktown, VA 23693
 1-800-535-4243
 www.Travaini.com

BARESHAF construction
 According to ISO 2858 standards

Versione ad **ASSE NUDO**
 Unificate secondo ISO 2858



- d5 Attacco tappato - per manovotometro (vedi tabella)
Plugged connection - for manovacuum gauge (see table)
- d6 Attacco tappato - per scarico corpo pompa (vedi tabella)
Plugged connection - for pump casing drain (see table)
- d9 Attacco tappato G 1/4 - per scarico olio cuscinetti supporto
G 1/4 plugged connection - bearings oil drain from housing
- d10 Tappo sfiato e carico olio G 1/2 - con astina di livello
G 1/2 plug with dipstick - bearings oil filling into housing
- d14 Attacco tappato G 1/4 - per sfiato camera tenuta
G 1/4 plugged connection - air-hole mechanical seal chamber
- d15 Attacco tappato G 1/4 - per scarico camera tenuta
G 1/4 plugged connection - discharge for mechanical seal chamber

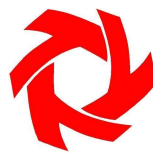
Connessioni filettate secondo UNI EN ISO 228-1. Disegno schematico. Dimensioni in mm con tolleranze secondo EN 735-1995. Pesì indicativi in Kg, riferiti a pompe in ghisa escluso motore, non impegnativi.
 Threaded connection according to UNI EN ISO 228-1. Schematic drawing. Dimensions in mm with tolerances according to EN 735-1995 standards. Weights in Kgs, referred to pumps in cast iron without motor, not binding.

RIF.-Ref.: A.P./C.T.
 DATA -Date: 06-2016

DOCUMENTO N. - Document no.: 4003.2L1.2001.01
 SOSTITUISCE DOC. - Replaces Doc. (ITEM): -

ITEM n° D00221 R

DIMENSIONI D'INGOMBRO / Overall dimensions
 POMPA CENTRIFUGA MONOSTADIO
 Monostage centrifugal pump
 TIPO / Type
TCD /2-R gr.3

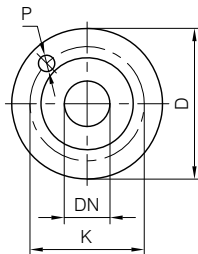


**TRAVAINI
 PUMPS USA**
 Liquid Ring & Rotary Vane Vacuum Pumps and Systems

200 Newsome Drive
 Yorktown, VA 23693
 1-800-535-4243
 www.Travaini.com

POMPA TIPO Pump type	Dimensioni costruttive Construction dimensions																					
	gr.	DNa	DNm	a	f	h1	h2	b	c	m1	m2	n1	n2	s1	w	d	*l	t	u	e1	e2	Peso Weight
65-315	3	100	65	125	530	225	280	80	20	160	120	400	315	18	370	42	85	45	12	226	209	128
80-315	3	125	80	125	530	250	315	80	20	160	120	400	315	18	370	42	85	45	12	232	210	129
100-250	3	125	100	140	530	225	280	80	20	160	120	400	315	18	370	42	85	45	12	215	183	110
100-315	3	125	100	140	530	250	315	80	20	160	120	400	315	18	370	42	85	45	12	250	225	132
125-250	3	150	125	140	530	250	355	80	20	160	120	400	315	18	370	42	85	45	12	245	200	122
125-315	3	150	125	140	530	280	355	100	22	200	150	500	400	22	370	42	85	45	12	270	230	158
150-250	3	200	150	160	*545	280	375	100	22	200	150	500	400	22	*385	42	85	45	12	300	240	162

(*)Non unificate secondo ISO 2858
 Not to ISO 2858 standards



FLANGE: Dimensioni secondo UNI 2223 - 2229 PN16
 FLANGES: Dimensions to UNI 2223-2229 NP16 standards

Dimensioni flange Flanges dimensions				
DNa-DNm	D	K	P	N° fori holes
65	185	145	18	4
80	200	160	18	8
100	220	180	18	8
125	250	210	18	8
150	285	240	22	8
200	340	295	22	12

Conessioni Connections		
		gr.3
d5		G 1/4
d6	Varianti - Variants	Pompa - Pump
		65-315

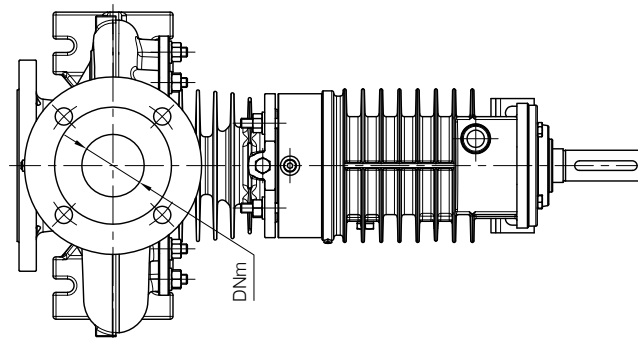
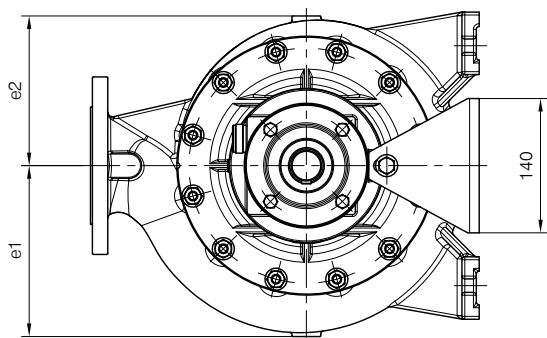
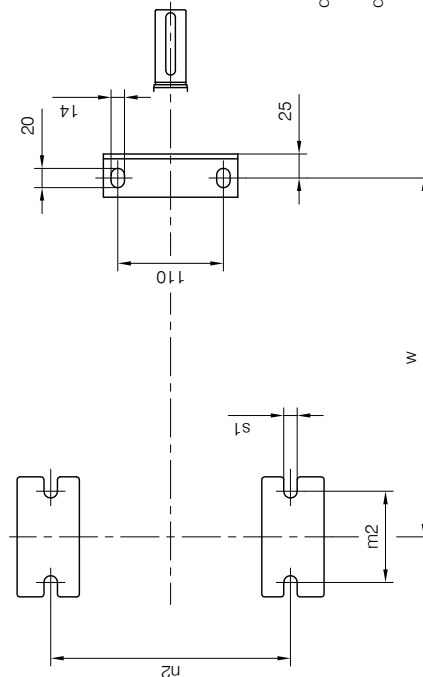
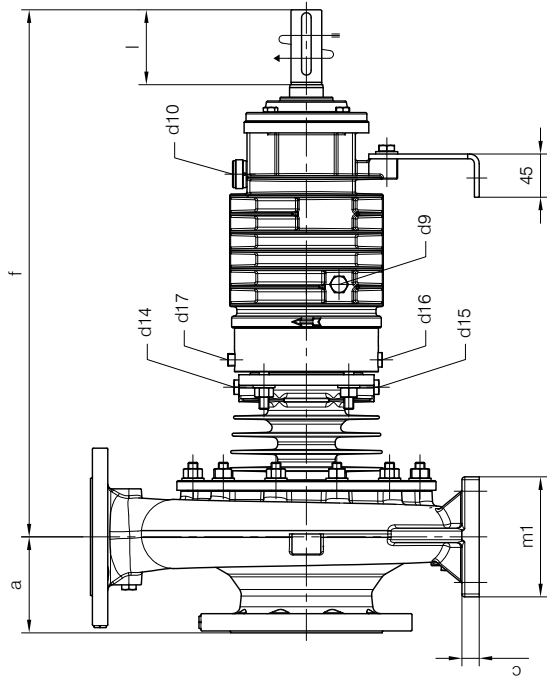
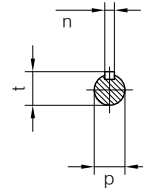
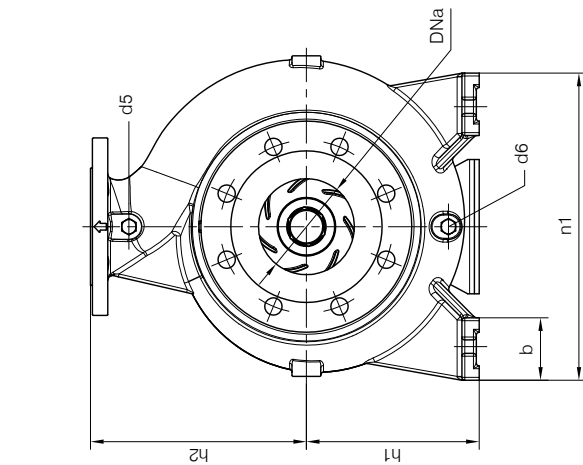
RIF.-Ref.: A.P./C.T. DOCUMENTO N. - Document no.: 4003.2L1.2001.02

DATA -Date: 06-2016 SOSTITUISCE DOC. - Replaces Doc. (ITEM): -

ITEM n° D00221 R

BARESHAFt construction

Versione ad ASSE NUDO

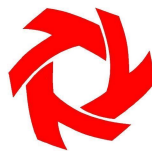


- d5 Attacco tappato - per manovotometro (vedi tabella)
Plugged connection - for manovacuum gauge (see table)
- d6 Attacco tappato - per scarico corpo pompa (vedi tabella)
Plugged connection - for pump casing drain (see table)
- d9 Attacco tappato G 1/4 - per scarico olio cuscinetti supporto
G 1/4 plugged connection - bearings oil drain from housing
- d10 Tappo sfiato e carico olio G 1/2 - con astina di livello
G 1/2 plug with dipstick - bearings oil filling into housing
- d14 Attacco tappato G 1/4 - per sfiato camera tenuta
G 1/4 plugged connection - air-hole mechanical seal chamber
- d15 Attacco tappato G 1/4 - per scarico camera tenuta
G 1/4 plugged connection - discharge for mechanical seal chamber
- d16 Attacco tappato G 1/4 - ingresso liquido sbarramento
G 1/4 plugged connection - safety barrier liquid inlet
- d17 Attacco tappato G 1/4 - uscita liquido sbarramento
G 1/4 plugged connection - safety barrier liquid outlet

Connessioni filettate secondo UNI EN ISO 228-1

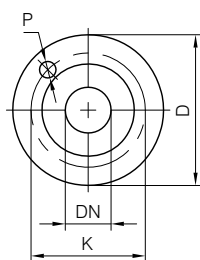
Disegno schematico. Dimensioni in mm con tolleranze secondo EN 795-1995.
 Pesì indicativi in Kg, riferiti a pompe in ghisa escluso motore, non impegnativi.
 Threaded connection according to UNI EN ISO 228-1

Schematic drawing. Dimensions in mm with tolerances according to EN 795-1995 standards.
 Weights in Kgs, referred to pumps in cast iron without motor, not binding.



POMPA TIPO Pump type	Dimensioni costruttive Construction dimensions																					
	gr.	DNa	DNm	a	f	h1	h2	b	c	m1	m2	n1	n2	s1	w	d	l	t	u	e1	e2	Peso Weight
25-125	1	40	25	80	406	112	140	50	15	100	70	190	140	14	285	24	48	27	8	95	90	30
25-160	1	40	25	80	406	132	160	50	16	100	70	240	190	14	285	24	48	27	8	110	108	37
25-200	1	40	25	80	406	160	180	50	16	100	70	240	190	14	285	24	48	27	8	133	127	41
32-125	1	50	32	80	406	112	140	50	15	100	70	190	140	14	285	24	48	27	8	105	91	32
32-160	1	50	32	80	406	132	160	50	16	100	70	240	190	14	285	24	48	27	8	125	110	35
32-200	1	50	32	80	406	160	180	50	16	100	70	240	190	14	285	24	48	27	8	140	130	44
40-125	1	65	40	80	406	112	140	50	15	100	70	210	160	14	285	24	48	27	8	115	100	34
40-160	1	65	40	80	406	132	160	50	16	100	70	240	190	14	285	24	48	27	8	130	115	39
40-200	1	65	40	100	406	160	180	50	16	100	70	265	212	14	285	24	48	27	8	146	135	43
40-250	2	65	40	100	536	180	225	65	18	125	95	320	250	14	372	32	78	35	10	176	163	70
50-125	1	80	50	100	406	132	160	50	16	100	70	240	190	14	285	24	48	27	8	130	110	36
50-160	1	80	50	100	406	160	180	50	16	100	70	265	212	14	285	24	48	27	8	147	125	42
50-200	1	80	50	100	406	160	200	50	16	100	70	265	212	14	285	24	48	27	8	161	146	46
50-250	2	80	50	125	536	180	225	65	18	125	95	320	250	14	372	32	78	35	10	183	169	74
65-125	1	100	65	100	406	160	180	65	16	125	95	280	212	14	285	24	48	27	8	145	117	61
*65-160	1	100	65	100	418	160	200	65	16	125	95	280	212	14	296	24	48	27	8	160	130	64
65-200	2	100	65	100	536	180	225	65	18	125	95	320	250	14	372	32	78	35	10	174	152	70
65-250	2	100	65	125	536	200	250	80	20	160	120	360	280	18	372	32	78	35	10	195	175	83
*80-160	1	125	80	125	418	180	225	65	16	125	95	320	250	14	296	24	48	27	8	186	142	69
80-200	2	125	80	125	536	180	250	65	18	125	95	345	280	14	372	32	78	35	10	188	158	71
80-250	2	125	80	125	536	225	280	80	20	160	120	400	315	18	372	32	78	35	10	225	185	90
100-200	2	125	100	125	536	200	280	80	20	160	120	360	280	18	372	32	78	35	10	211	170	86

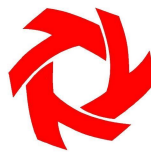
(*)Non unificate secondo ISO 2858
 Not to ISO 2858 standards



FLANGE: Dimensioni secondo UNI 2223 - 2229 PN16
 FLANGES: Dimensions to UNI 2223-2229 NP16 standards

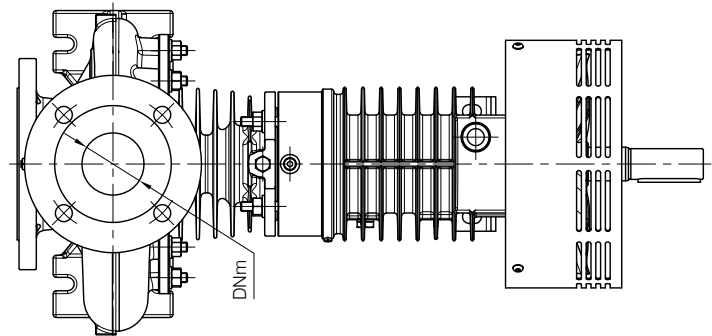
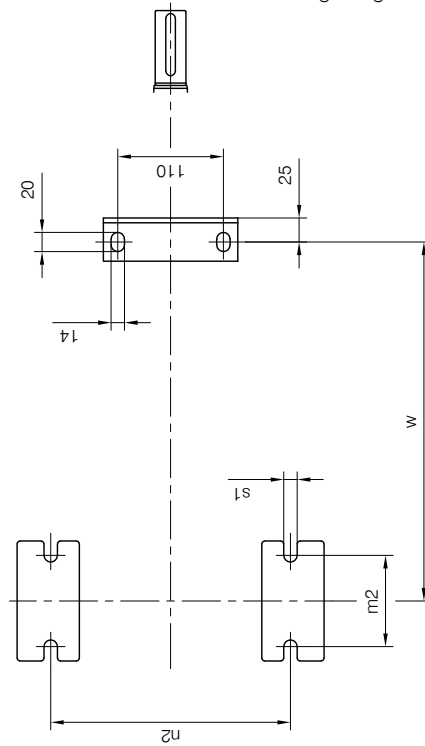
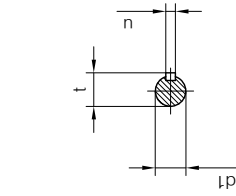
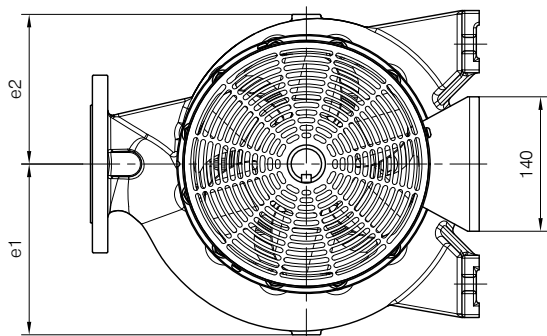
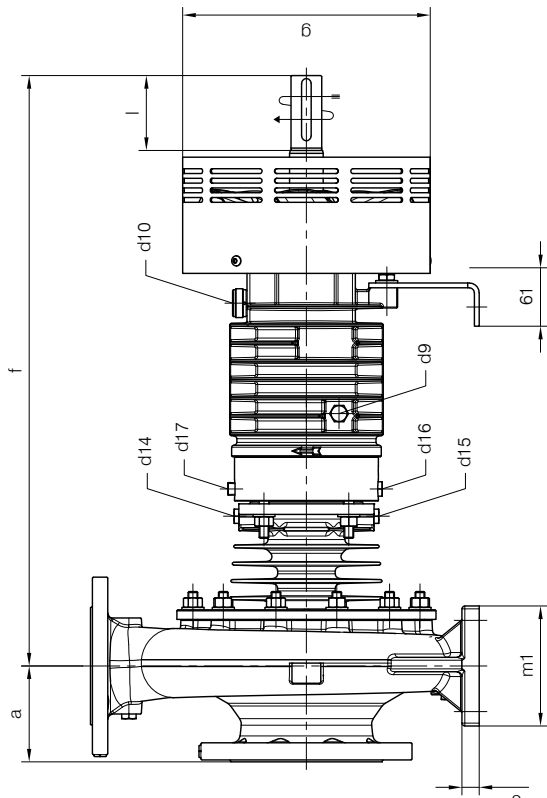
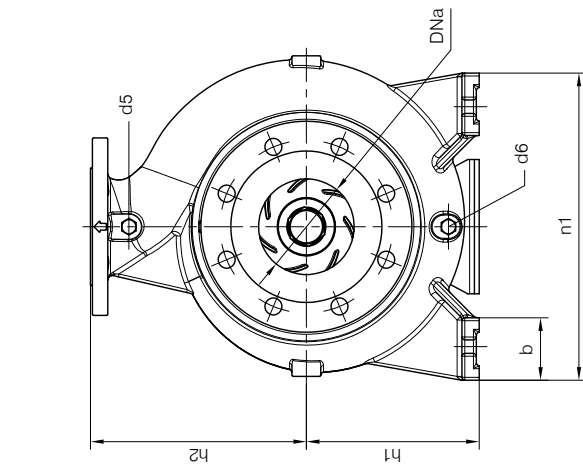
Dimensioni flange Flanges dimensions				
DNa-DNm	D	K	P	N° fori holes
25	115	85	14	4
32	140	100	18	4
40	150	110	18	4
50	165	125	18	4
65	185	145	18	4
80	200	160	18	8
100	220	180	18	8
125	250	210	18	8

Conessioni Connections			
	gr.1	gr.2	
d5	G 1/4	G 1/4	
d6	Pompa - Pump	G 1/4	
		25-125	G 1/8
		25-160	G 1/8
		100-200	-
		G 1/2	



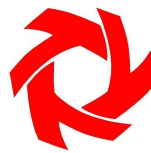
BARESHAF construction

Versione ad **ASSE NUDO**

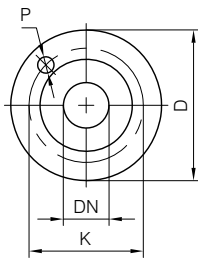


- d5 Attacco tappato - per manovotometro (vedi tabella)
Plugged connection - for manovacuum gauge (see table)
- d6 Attacco tappato - per scarico corpo pompa (vedi tabella)
Plugged connection - for pump casing drain (see table)
- d9 Attacco tappato G 1/4 - per scarico olio cuscinetti supporto
G 1/4 plugged connection - bearings oil drain from housing
- d10 Tappo sfiatato e carico olio G 1/2 - con astina di livello
G 1/2 plug with dipstick - bearings oil filling into housing
- d14 Attacco tappato G 1/4 - per sfciato camera tenuta
G 1/4 plugged connection - air-hole mechanical seal chamber
- d15 Attacco tappato G 1/4 - per scarico camera tenuta
G 1/4 plugged connection - discharge for mechanical seal chamber
- d16 Attacco tappato G 1/4 - ingresso liquido sbarramento
G 1/4 plugged connection - safety barrier liquid inlet
- d17 Attacco tappato G 1/4 - uscita liquido sbarramento
G 1/4 plugged connection - safety barrier liquid outlet

Connessioni filettate secondo UNI EN ISO 228-1
 Disegno schematico. Dimensioni in mm con tolleranze secondo EN 795-1995.
 Pesì indicativi in Kg, riferiti a pompe in ghisa escluso motore, non impegnativi.
 Threaded connection according to UNI EN ISO 228-1
 Schematic drawing. Dimensions in mm with tolerances according to EN 795-1995 standards.
 Weights in Kgs, referred to pumps in cast iron without motor, not binding.



POMPA TIPO Pump type	Dimensioni costruttive Construction dimensions																						
	gr.	DNa	DNm	a	f	h1	h2	b	c	g	m1	m2	n1	n2	s1	w	d	l	t	u	e1	e2	Peso Weight
25-125	1	40	25	80	475	112	140	50	15	195	100	70	190	140	14	285	24	48	27	8	95	90	33
25-160	1	40	25	80	475	132	160	50	16	195	100	70	240	190	14	285	24	48	27	8	110	108	40
25-200	1	40	25	80	475	160	180	50	16	195	100	70	240	190	14	285	24	48	27	8	133	127	44
32-125	1	50	32	80	475	112	140	50	15	195	100	70	190	140	14	285	24	48	27	8	105	91	35
32-160	1	50	32	80	475	132	160	50	16	195	100	70	240	190	14	285	24	48	27	8	125	110	38
32-200	1	50	32	80	475	160	180	50	16	195	100	70	240	190	14	285	24	48	27	8	140	130	47
40-125	1	65	40	80	475	112	140	50	15	195	100	70	210	160	14	285	24	48	27	8	115	100	37
40-160	1	65	40	80	475	132	160	50	16	195	100	70	240	190	14	285	24	48	27	8	130	115	42
40-200	1	65	40	100	475	160	180	50	16	195	100	70	265	212	14	285	24	48	27	8	146	135	46
40-250	2	65	40	100	613	180	225	65	18	258	125	95	320	250	14	372	32	78	35	10	176	163	76
50-125	1	80	50	100	475	132	160	50	16	195	100	70	240	190	14	285	24	48	27	8	130	110	39
50-160	1	80	50	100	475	160	180	50	16	195	100	70	265	212	14	285	24	48	27	8	147	125	45
50-200	1	80	50	100	475	160	200	50	16	195	100	70	265	212	14	285	24	48	27	8	161	146	49
50-250	2	80	50	125	613	180	225	65	18	258	125	95	320	250	14	372	32	78	35	10	183	169	80
65-125	1	100	65	100	475	160	180	65	16	195	125	95	280	212	14	285	24	48	27	8	145	117	64
65-160	1	100	65	100	487	160	200	65	16	195	125	95	280	212	14	296	24	48	27	8	160	130	67
65-200	2	100	65	100	613	180	225	65	18	258	125	95	320	250	14	372	32	78	35	10	174	152	76
65-250	2	100	65	125	613	200	250	80	20	258	160	120	360	280	18	372	32	78	35	10	195	175	89
80-160	1	125	80	125	487	180	225	65	16	195	125	95	320	250	14	296	24	48	27	8	186	142	72
80-200	2	125	80	125	613	180	250	65	18	258	125	95	345	280	14	372	32	78	35	10	188	158	77
80-250	2	125	80	125	613	225	280	80	20	258	160	120	400	315	18	372	32	78	35	10	225	185	96
100-200	2	125	100	125	613	200	280	80	20	258	160	120	360	280	18	372	32	78	35	10	211	170	92



FLANGE: Dimensioni secondo UNI 2223 - 2229 PN16
FLANGES: Dimensions to UNI 2223-2229 NP16 standards

Dimensioni flange Flanges dimensions				
DNa-DNm	D	K	P	N° fori holes
25	115	85	14	4
32	140	100	18	4
40	150	110	18	4
50	165	125	18	4
65	185	145	18	4
80	200	160	18	8
100	220	180	18	8
125	250	210	18	8

Connessioni Connections				
	gr.1	gr.2		
d5	G 1/4	G 1/4		
d6	Pompa - Pump	G 1/4		
		25-125	G 1/8	-
		25-160	G 1/8	-
		100-200	-	G 1/2

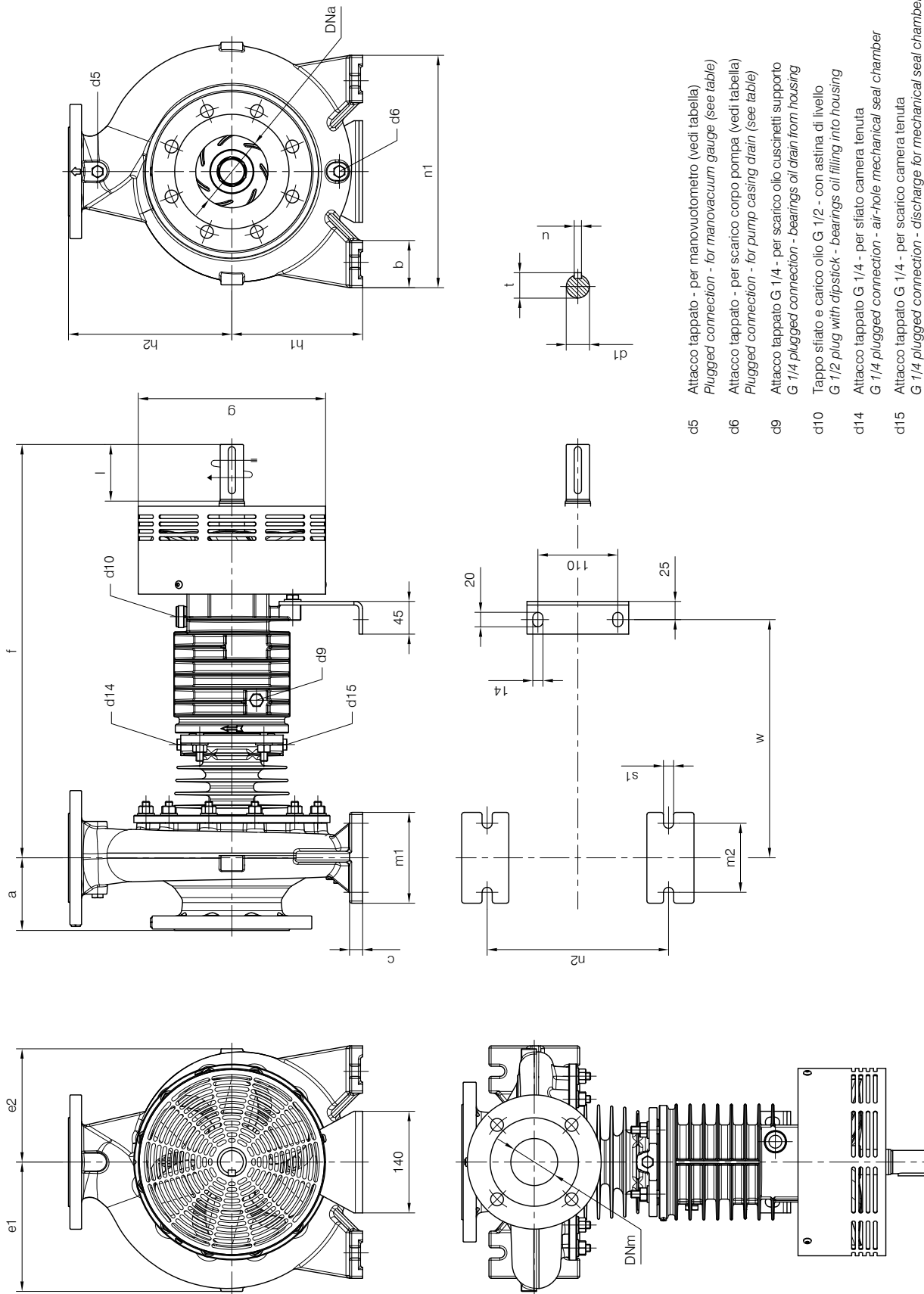
DIMENSIONI D'INGOMBRO / Overall dimensions
 POMPA CENTRIFUGA MONOSTADIO
 Monostage centrifugal pump
 TIPO / Type
TCD /2-R/GS/XT gr.1 e 2



200 Newsome Drive
 Yorktown, VA 23693
 1-800-535-4243
 www.Travaini.com

BARESHAF construction

Versione ad ASSE NUDO



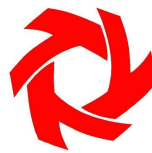
Connessioni filettate secondo UNI EN ISO 228-1
 Disegno schematico. Dimensioni in mm con tolleranze secondo EN 795-1995.
 Pesì indicativi in Kg, riferiti a pompe in ghisa escluso motore, non impegnativi.
 Threaded connection according to UNI EN ISO 228-1
 Schematic drawing. Dimensions in mm with tolerances according to EN 795-1995 standards.
 Weights in Kgs, referred to pumps in cast iron without motor, not binding.

RIF.-Ref.: A.P./C.T.
 DATA -Date: 06-2016

DOCUMENTO N. - Document no.: 4001-02.2L1.2105.01
 SOSTITUISCE DOC. - Replaces Doc. (ITEM): -

ITEM n° D00254R

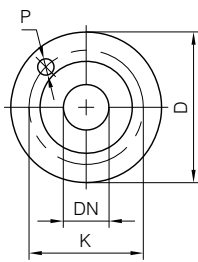
DIMENSIONI D'INGOMBRO / Overall dimensions
 POMPA CENTRIFUGA MONOSTADIO
 Monostage centrifugal pump
 TIPO / Type
TCD /2-R/XT gr.1 e 2



TRAVAINI
PUMPS USA
 Liquid Ring & Rotary Vane Vacuum Pumps and Systems

200 Newsome Drive
 Yorktown, VA 23693
 1-800-535-4243
 www.Travaini.com

POMPA TIPO Pump type	Dimensioni costruttive Construction dimensions																						
	gr.	DNa	DNm	a	f	h1	h2	b	c	g	m1	m2	n1	n2	s1	w	d	l	t	u	e1	e2	Peso Weight
25-125	1	40	25	80	432	112	140	50	15	195	100	70	190	140	14	242	24	48	27	8	95	90	26
25-160	1	40	25	80	432	132	160	50	16	195	100	70	240	190	14	242	24	48	27	8	110	108	33
25-200	1	40	25	80	432	160	180	50	16	195	100	70	240	190	14	242	24	48	27	8	133	127	37
32-125	1	50	32	80	432	112	140	50	15	195	100	70	190	140	14	242	24	48	27	8	105	91	28
32-160	1	50	32	80	432	132	160	50	16	195	100	70	240	190	14	242	24	48	27	8	125	110	31
32-200	1	50	32	80	432	160	180	50	16	195	100	70	240	190	14	242	24	48	27	8	140	130	40
40-125	1	65	40	80	432	112	140	50	15	195	100	70	210	160	14	242	24	48	27	8	115	100	30
40-160	1	65	40	80	432	132	160	50	16	195	100	70	240	190	14	242	24	48	27	8	130	115	35
40-200	1	65	40	100	432	160	180	50	16	195	100	70	265	212	14	242	24	48	27	8	146	135	39
40-250	2	65	40	100	567	180	225	65	18	258	125	95	320	250	14	328	32	78	35	10	176	163	68
50-125	1	80	50	100	432	132	160	50	16	195	100	70	240	190	14	242	24	48	27	8	130	110	32
50-160	1	80	50	100	432	160	180	50	16	195	100	70	265	212	14	242	24	48	27	8	147	125	38
50-200	1	80	50	100	432	160	200	50	16	195	100	70	265	212	14	242	24	48	27	8	161	146	42
50-250	2	80	50	125	567	180	225	65	18	258	125	95	320	250	14	328	32	78	35	10	183	169	72
65-125	1	100	65	100	432	160	180	65	16	195	125	95	280	212	14	242	24	48	27	8	145	117	57
65-160	1	100	65	100	444	160	200	65	16	195	125	95	280	212	14	253	24	48	27	8	160	130	60
65-200	2	100	65	100	567	180	225	65	18	258	125	95	320	250	14	328	32	78	35	10	174	152	68
65-250	2	100	65	125	567	200	250	80	20	258	160	120	360	280	18	328	32	78	35	10	195	175	81
80-160	1	125	80	125	444	180	225	65	16	195	125	95	320	250	14	253	24	48	27	8	186	142	65
80-200	2	125	80	125	567	180	250	65	18	258	125	95	345	280	14	328	32	78	35	10	188	158	69
80-250	2	125	80	125	567	225	280	80	20	258	160	120	400	315	18	328	32	78	35	10	225	185	88
100-200	2	125	100	125	567	200	280	80	20	258	160	120	360	280	18	328	32	78	35	10	211	170	84



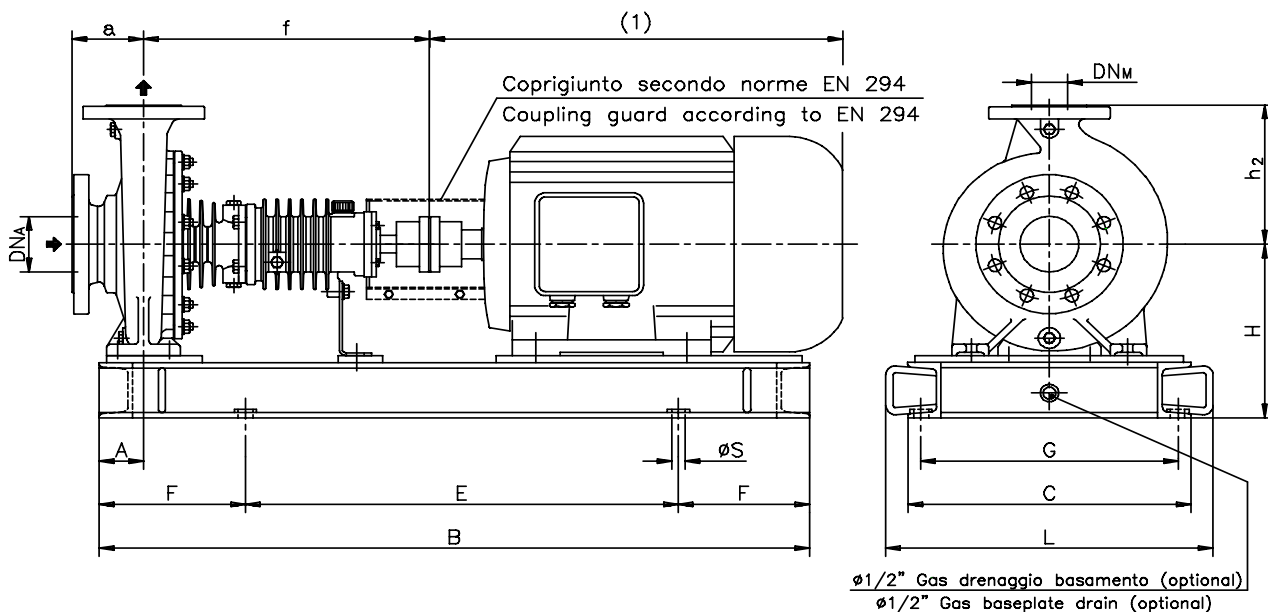
FLANGE: Dimensioni secondo UNI 2223 - 2229 PN16
 FLANGES: Dimensions to UNI 2223-2229 NP16 standards

Dimensioni flange Flanges dimensions				
DNa-DNm	D	K	P	N° fori holes
25	115	85	14	4
32	140	100	18	4
40	150	110	18	4
50	165	125	18	4
65	185	145	18	4
80	200	160	18	8
100	220	180	18	8
125	250	210	18	8

Connessioni Connections				
	gr.1	gr.2		
d5	G 1/4	G 1/4		
d6	Pompa - Pump	G 1/4		
		25-125	G 1/8	-
		25-160	G 1/8	-
		100-200	-	G 1/2



Versione ACCOPPIATA (BASE - GIUNTO)
COUPLED construction (BASEPLATE - COUPLING)



Pompa tipo Pump type	DIMENSIONI Dimensions						MOTORE ELETTRICO <i>Electric Motor</i>																							
							80M			90S/90L			100L			112M			132S/132M			160M/160L								
							DN _A	DN _M	a	f	h ₂	A	N°	H	Peso Weight	N°	H	Peso Weight	N°	H	Peso Weight	N°	H	Peso Weight	N°	H	Peso Weight	N°	H	Peso Weight
25-125	40	25	80	385	140	60	C01	202	56,5	C01	202	56	C01	202	55	C01	202	53	C03	222	71									
25-160	40	25	80	385	160	60	C01	222	63	C01	222	62,5	C01	222	63	C01	222	62,5	C03	222	75									
25-200	40	25	80	385	180	60	C01	250	67	C01	250	66,5	C01	250	67	C01	250	64	C01	250	79									
32-125	50	32	80	385	140	60	C01	202	58	C01	202	57,5	C01	202	56,5	C01	202	55	C03	222	73									
32-160	50	32	80	385	160	60	C01	222	61	C01	222	60,5	C01	222	61	C01	222	60,5	C03	222	73									
32-200	50	32	80	385	180	60	C01	250	68,5	C01	250	70	C01	250	69	C01	250	70	C03	250	87	C03	250	82						
40-125	65	40	80	385	140	60	C01	202	59	C01	202	59,5	C01	202	58,5	C01	202	57	C03	222	75	C03	250	75						
40-160	65	40	80	385	160	60	C01	222	65	C01	222	64,5	C01	222	65	C01	222	64,5	C03	222	79	C03	250	82						
40-200	65	40	100	385	180	60	C01	250	68	C01	250	69	C01	250	69	C01	250	69	C03	250	85	C03	250	81						
40-250	65	40	100	500	225	75				C03	270	109	C03	270	109	C03	270	110	C03	270	110	C05	270	114						
50-125	80	50	100	385	160	60	C01	222	63	C01	222	62,5	C01	222	63	C01	222	62,5	C03	222	77	C03	250	80						
50-160	80	50	100	385	180	60	C01	250	67	C01	250	68	C01	250	68	C01	250	68	C03	250	84	C03	250	80						
50-200	80	50	100	385	200	60	C01	250	71	C01	250	72	C01	250	72	C01	250	72	C03	250	88	C03	250	84						
50-250	80	50	125	500	225	75							C03	270	112	C03	270	114	C03	270	114	C05	270	120						
65-125	100	65	100	385	180	75	C01	250	87	C01	250	87	C01	250	87	C01	250	84	C03	250	99	C03	250	99						
65-160	100	65	100	395	200	75				C03	250	105	C03	250	106	C03	250	106	C03	250	107	C03	250	106						
65-200	100	65	100	500	225	75							C03	270	117	C03	270	118	C03	270	118	C05	270	124						
65-250	100	65	125	500	250	90							C05	290	129	C05	290	129	C05	290	130	C05	290	131						
80-160	125	80	125	395	225	75							C03	270	111	C03	270	111	C03	270	110	C05	270	118						
80-200	125	80	125	500	250	75							C03	270	111	C03	270	110	C03	270	110	C05	270	118						
80-250	125	80	125	500	280	90												C05	315	138	C05	315	137							
100-200	125	100	125	500	280	90							C05	290	145	C05	290	144	C05	290	144	C05	290	143						

DISEGNO SCHEMATICO. DIMENSIONI IN MM CON TOLLERANZE SECONDO EN 735-1995. PESI INDICATI IN KG, RIFERITI A POMPE IN ESECUZIONE "GS" GHISA SFEROIDALE ESCLUSO MOTORE, NON IMPEGNATIVI

Schematic drawing. Dimensions in mm with tolerances according to EN 735-1995 standards. Weights in Kgs, referred to pump in ductile iron "GS" construction without motor, not certified.

(1) DIMENSIONI IN FUNZIONE DELLA MARCA DEL MOTORE ELETTRICO INSTALLATO / Not certified dimensions according to installed motor manufacture

RIF. - Ref.: E.Z./C.T.

SOSTITUISCE - Replaces: 4000.1L3.2001.05.01

DATA - Date: NOVEMBRE 2011 - November 2011

N°.: 4000.1L3.2001.06.01

DIMENSIONI D'INGOMBRO / Overall dimensions.
POMPE CENTRIFUGHE MONOSTADIO
Monostage centrifugal pumps
SERIE / Series
TCD gr. 1-2 pag.1/2



TRAVAINI
PUMPS USA
 Liquid Ring & Rotary Vane Vacuum Pumps and Systems

200 Newsome Drive
 Yorktown, VA 23693
 1-800-535-4243
 www.Travaini.com

Versione ACCOPPIATA (BASE - GIUNTO)
COUPLED construction (BASEPLATE - COUPLING)

BASAMENTI
Base plates

N°	B	C	E	F	L	G	øS	N°fori holes
C01	800	320	500	150	380	280	18	4
C03	1000	385	600	200	445	345	18	4
C05	1200	420	800	200	480	380	18	4
C11	1350	500	950	200	570	452	18	4
C13	1650	640	1050	300	710	592	18	4

DIMENSIONI FLANGE
Flanges dimensions

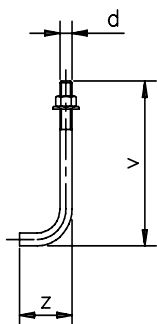
DN _A -DN _M	D	K	P	N°fori holes
25	115	85	14	4
32	140	100	18	4
40	150	110	18	4
50	165	125	18	4
65	185	145	18	4
80	200	160	18	8
100	220	180	18	8
125	250	210	18	8

FLANGE:

Dimensioni secondo
 UNI 2223-2229 PN16

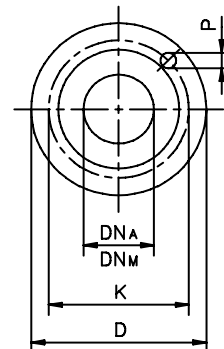
FLANGES:

Dimensions to
 UNI 2223-2229 NP16
 standards



BULLONI DI FONDAZIONE
 (OPTIONAL)
Foundation bolts

d	v	z
M14	280	50
M16	350	60
M20	400	80



Pompa tipo Pump type	MOTORE ELETTRICO <i>Electric Motor</i>														
	180M/180L			200L			225S/225M			250M			280S/280M		
	N°	H	Peso Weight	N°	H	Peso Weight	N°	H	Peso Weight	N°	H	Peso Weight	N°	H	Peso Weight
25-125															
25-160															
25-200															
32-125															
32-160															
32-200															
40-125															
40-160															
40-200	C05	270	87												
40-250	C05	270	111												
50-125															
50-160	C05	270	86												
50-200	C05	270	90	C11	330	129									
50-250	C05	270	117	C11	330	119	C11	355	121	C13	383	152	C13	413	156
65-125															
65-160	C05	270	112	C11	330	183									
65-200	C05	270	121	C11	330	155	C11	355	155	C13	383	185	C13	413	186
65-250	C05	290	128	C11	330	167	C11	355	170	C13	383	201	C13	413	204
80-160	C05	270	117	C11	330	155	C11	355	157	C13	383	195			
80-200	C05	270	117	C11	330	148	C11	355	160	C13	383	188	C13	413	190
80-250	C05	315	137	C11	355	178	C11	355	176	C13	383	208	C13	413	210
100-200	C05	290	143	C11	330	184	C11	355	182	C13	383	214	C13	413	216

MOTORI ELETTRICI
Electric Motors

Grandezza Frame size	Giri/min	Giri/min
	RPM	RPM
	2900	1450
IEC	Kw	Kw
80M	0,75	0,55
	1,1	0,75
90S	1,5	1,1
90L	2,2	1,5
100L	3	2,2
		3
112M	4	4
132S	5,5-7,5	5,5
132M		7,5
160M	11-15	11
160L	18,5	15
180M	22	18,5
180L		22
200L	30-37	30
225S		37
225M	45	45
250M	55	55
280S	75	75
280M	90	90

DISEGNO SCHEMATICO. DIMENSIONI IN MM CON TOLLERANZE SECONDO EN 735-1995. PESI INDICATIVI IN KG, RIFERITI A POMPE IN ESECUZIONE "GS" GHISA SFEROIDALE ESCLUSO MOTORE, NON IMPEGNATIVI

Schematic drawing. Dimensions in mm with tolerances to EN 735-1995 standards. Weights in Kgs, referred to pump in ductile iron "GS" construction without motor, not certified.

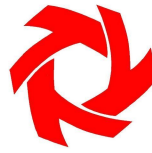
(1) DIMENSIONI IN FUNZIONE DELLA MARCA DEL MOTORE ELETTRICO INSTALLATO / Not certified dimensions according to installed motor manufacture

RIF. - Ref.: E.Z./C.T.

SOSTITUISCE - Replaces: 4000.1L3.2001.05.02

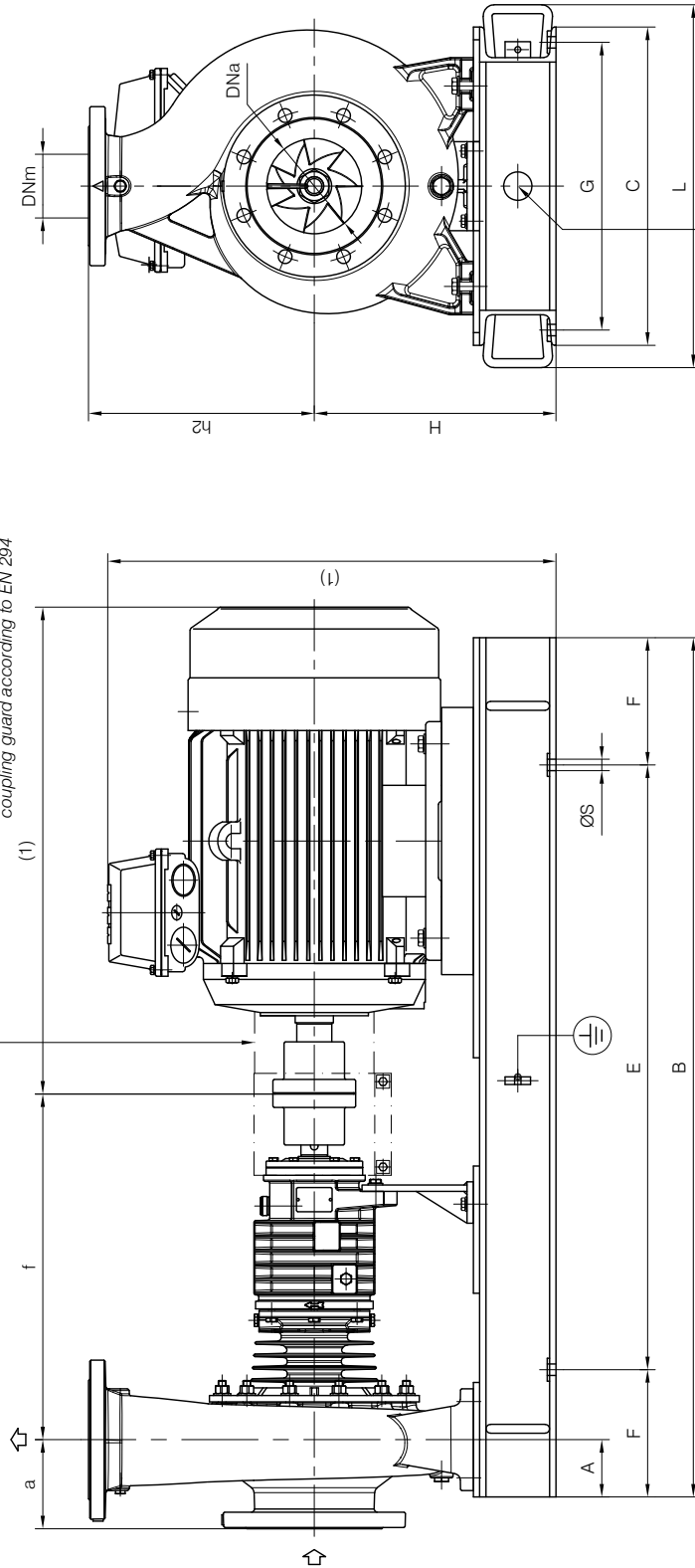
DATA - Date: NOVEMBRE 2011 - November 2011

N°.: 4000.1L3.2001.06.02



Versione ACCOPIATA (BASE-GIUNTO)

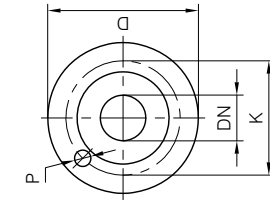
coprigiunto secondo norma EN 294
 coupling guard according to EN 294



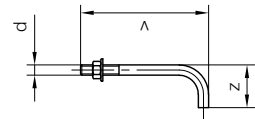
drenaggio basamento G 1/2 (optional)
 baseplate drain G 1/2 (optional)

COUPLED construction (BASEPLATE-COUPLING)

DNa-DNm	D	K	P	N° fori holes
65	185	145	18	4
80	200	160	18	8
100	220	180	18	8
125	250	210	18	8
150	285	240	22	8
200	340	295	22	12



d	V	Z
M14	280	50
M16	350	60



N°	B	C	E	F	L	G	ØS	N° fori holes
C05	1200	420	800	200	480	380	18	4
C11	1350	500	950	200	570	452	18	4
C13	1650	640	1050	300	710	592	18	4

(1) Dimensioni in funzione della marca del motore installato.
 (1) Dimensions depend on installed motor manufacturer.

FLANGE: Dimensioni secondo UNI 2223 - 2229 PN16
 FLANGES: Dimensions to UNI 2223-2229 NP16 standards

Comessioni filettate secondo UNI EN ISO 228-1. Disegno schematico. Dimensioni in mm con tolleranze secondo EN 735-1995. Pesì indicativi in Kg, riferiti a pompe in ghisa escluso motore, non impegnativi.
 Threaded connection according to UNI EN ISO 228-1. Schematic drawing. Dimensions in mm with tolerances according to EN 735-1995 standards. Weights in Kgs, referred to pumps in cast iron without motor, not binding.



Dimensioni costruttive versione Accoppiata <i>Coupled construction dimensions</i>																			
POMPA TIPO <i>Pump type</i>		Dimensioni pompa <i>Pump dimensions</i>						motore motor 132			motore motor 160M/L			motore motor 180M/L			motore motor 200L		
gr.	DNa	DNm	a	f	h2	A	N°	H	Peso <i>Weight</i>	N°	H	Peso <i>Weight</i>	N°	H	Peso <i>Weight</i>	N°	H	Peso <i>Weight</i>	
65-315	3	100	65	125	530	280	90	C05	315	172	C05	315	187	C05	315	187	C11	355	217
80-315	3	125	80	125	530	315	90	C05	340	197	C05	340	197	C05	340	187	C11	380	217
100-250	3	125	100	140	530	280	90	C05	315	175	C05	315	170	C05	315	170	C11	355	200
100-315	3	125	100	140	530	315	90	C05	340	200	C05	340	200	C05	340	190	C11	380	220
125-250	3	150	125	140	530	355	90	C05	340	190	C05	340	190	C05	340	180	C11	380	210
125-315	3	150	125	140	530	355	110	-	-	-	C13	413	315	C13	413	315	C13	413	310
150-250	3	200	150	160	545	375	110	-	-	-	C13	413	320	C13	413	320	C13	413	315

Dimensioni costruttive versione Accoppiata <i>Coupled construction dimensions</i>																			
POMPA TIPO <i>Pump type</i>		Dimensioni pompa <i>Pump dimensions</i>						motore motor 225S/M			motore motor 250M			motore motor 280S/M			motore motor 315S/M		
gr.	DNa	DNm	a	f	h2	A	N°	H	Peso <i>Weight</i>	N°	H	Peso <i>Weight</i>	N°	H	Peso <i>Weight</i>	N°	H	Peso <i>Weight</i>	
65-315	3	100	65	125	530	280	90	C11	355	217	C13	383	282	C13	413	282	C13	448	302
80-315	3	125	80	125	530	315	90	C11	380	222	C13	383	277	C13	413	297	C13	448	297
100-250	3	125	100	140	530	280	90	C11	355	200	C13	383	265	C13	413	265	C13	448	285
100-315	3	125	100	140	530	315	90	C11	380	225	C13	383	280	C13	413	300	C13	448	300
125-250	3	150	125	140	530	355	90	C11	380	215	C13	383	275	C13	413	290	C13	448	290
125-315	3	150	125	140	530	355	110	C13	413	315	C13	413	325	C13	413	310	C13	448	325
150-250	3	200	150	160	545	375	110	C13	413	320	C13	413	330	C13	413	315	-	-	-

MOTORI ELETTRICI <i>Electric Motors</i>											
Grandezza <i>Frame size</i> IEC	Giri/min. <i>RPM</i> 960		Giri/min. <i>RPM</i> 1450		Giri/min. <i>RPM</i> 2900		Grandezza <i>Frame size</i> IEC	Giri/min. <i>RPM</i> 1450		Giri/min. <i>RPM</i> 2900	
	kW	HP	kW	HP	kW	HP		kW	HP	kW	HP
132 S	3	4	5.5	7.5	5.5-7.5	7.5-10	225 S	37	50	-	-
132 M	4-5.5	5.5-7.5	7.5	10	-	-	225 M	45	60	45	60
160 M	7.5	10	11	15	11-15	15-20	250 M	55	75	55	75
160 L	11	15	15	20	18.5	25	280 S	75	100	75	100
180 M	-	-	18.5	25	22	30	280 M	-	-	90	125
180 L	15	20	22	30			315 S	-	-	110	150
200 L	-	-	30	40	30-37	40-50	315 M	-	-	132	180

DIMENSIONI D'INGOMBRO
Overall dimensions
POMPE CENTRIFUGHE MONOSTADIO
Monostage centrifugal pumps
SERIE
Series

TCD gr. 1-2



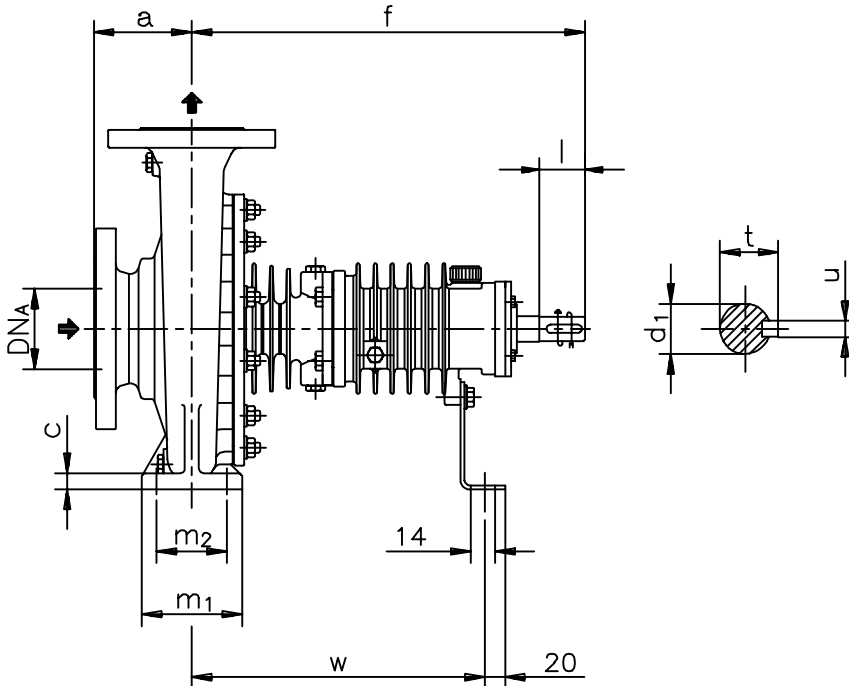
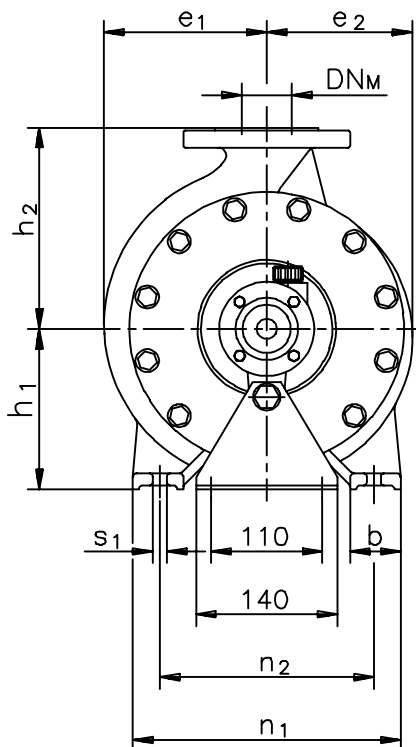
**TRAVAINI
PUMPS USA**

Liquid Ring & Rotary Vane Vacuum Pumps and Systems

200 Newsome Drive
Yorktown, VA 23693
1-800-535-4243
www.Travaini.com

Versione ad **ASSE NUDO**
Unificate secondo ISO 2858

BARESHAFT construction
According to ISO 2858 standards



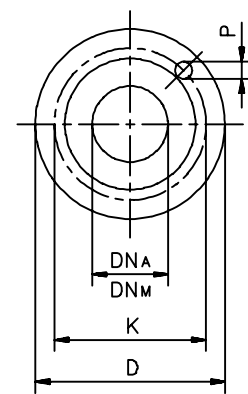
DIMENSIONI FLANGE
Flanges dimensions

DN _A	D	K	P	N° fori holes
25	115	85	14	4
32	140	100	18	4
40	150	110	18	4
50	165	125	18	4
65	185	145	18	4
80	200	160	18	8
100	220	180	18	8
125	250	210	18	8

Pompa tipo Pump type	Versione ad		ASSE NUDO BARESHAFT construction																	Peso Weight	
	DN _A	DN _M	a	f	h ₁	h ₂	b	c	m ₁	m ₂	n ₁	n ₂	s ₁	w	d ₁	l	t	u	e ₁		e ₂
25-125	40	25	80	385	112	140	50	15	100	70	190	140	14	285	24	50	27	8	95	90	23
25-160	40	25	80	385	132	160	50	16	100	70	240	190	14	285	24	50	27	8	110	108	30
25-200	40	25	80	385	160	180	50	16	100	70	240	190	14	285	24	50	27	8	133	128	34
32-125	50	32	80	385	112	140	50	15	100	70	190	140	14	285	24	50	27	8	105	91	25
32-160	50	32	80	385	132	160	50	16	100	70	240	190	14	285	24	50	27	8	125	110	28
32-200	50	32	80	385	160	180	50	16	100	70	240	190	14	285	24	50	27	8	140	130	37
40-125	65	40	80	385	112	140	50	15	100	70	210	160	14	285	24	50	27	8	115	100	27
40-160	65	40	80	385	132	160	50	16	100	70	240	190	14	285	24	50	27	8	130	115	32
40-200	65	40	100	385	160	180	50	16	100	70	265	212	14	285	24	50	27	8	146	135	36
40-250	65	40	100	500	180	225	65	18	125	95	320	250	14	370	32	80	35	10	176	163	62
50-125	80	50	100	385	132	160	50	16	100	70	240	190	14	285	24	50	27	8	130	110	29
50-160	80	50	100	385	160	180	50	16	100	70	265	212	14	285	24	50	27	8	147	125	35
50-200	80	50	100	385	160	200	50	16	100	70	265	212	14	285	24	50	27	8	161	146	39
50-250	80	50	125	500	180	225	65	18	125	95	320	250	14	370	32	80	35	10	183	169	66
65-125	100	65	100	385	160	180	65	16	125	95	280	212	14	285	24	50	27	8	145	117	54
*65-160	100	65	100	395	160	200	65	16	125	95	280	212	14	295	24	48	27	8	160	130	57
65-200	100	65	100	500	180	225	65	18	125	95	320	250	14	370	32	80	35	10	174	152	62
65-250	100	65	125	500	200	250	80	20	160	120	360	280	18	370	32	80	35	10	195	175	75
*80-160	125	80	125	395	180	225	65	16	125	95	320	250	14	295	24	48	27	8	186	142	62
80-200	125	80	125	500	180	250	65	18	125	95	345	280	14	370	32	80	35	10	188	158	63
80-250	125	80	125	500	225	280	80	20	160	120	400	315	18	370	32	80	35	10	225	185	82
100-200	125	100	125	500	200	280	80	20	160	120	360	280	18	370	32	80	35	10	211	170	78

FLANGE:
Dimensioni secondo
UNI 2223-2229 PN16

FLANGES:
Dimensions to
UNI 2223-2229 NP16
standards



Disegno schematico. Dimensioni in mm con tolleranze secondo EN 735-1995. Pesi indicativi in Kg, riferiti a pompe in esecuzione "GS" ghisa sferoidale escluso motore, non impegnativi.
Schematic drawing. Dimensions in mm with tolerances to EN 735-1995 standards. Weights in Kgs, referred to pump in ductile iron "GS" construction without motor, not certified.
(* Non unificate secondo ISO 2858 / Not to ISO 2858 standards)

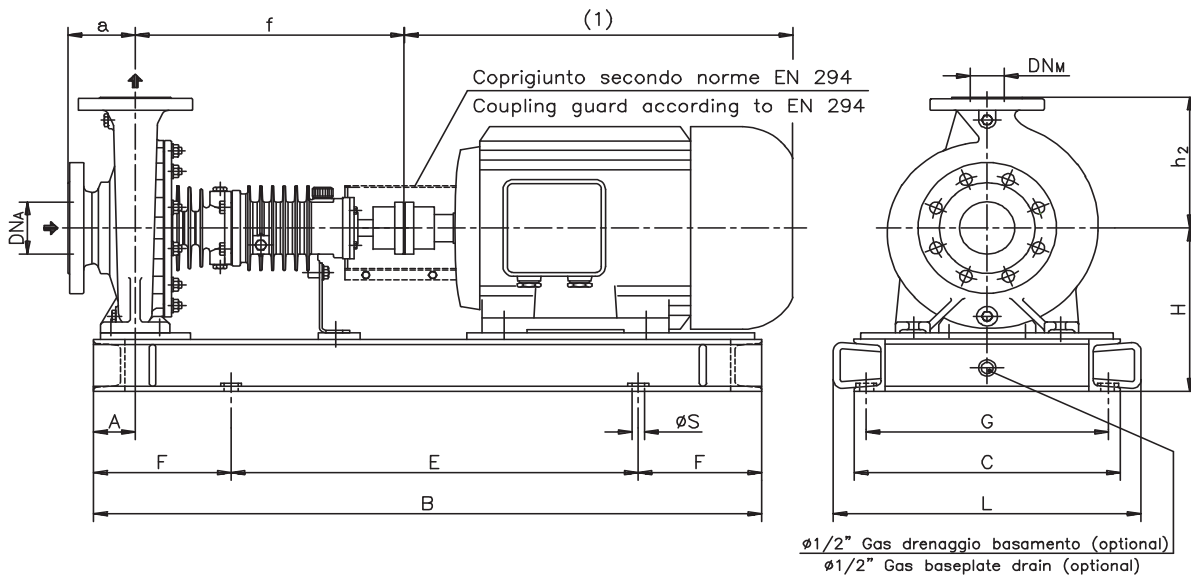
RIF. - Ref.:	F.P./C.T.	SOSTITUISCE - Replaces:	4000.100.201.02.A
DATA - Date:	NOVEMBRE 2006 - November 2006	N°:	4000.100.201.03.A

DIMENSIONI D'INGOMBRO / Overall dimensions.
 POMPE CENTRIFUGHE MONOSTADIO
 Monostage centrifugal pumps
 SERIE / Series
 TCD gr. 1-2 pag.1/2



200 Newsome Drive
 Yorktown, VA 23693
 1-800-535-4243
 www.Travaini.com

Versione ACCOPPIATA (BASE - GIUNTO)
 COUPLED construction (BASEPLATE - COUPLING)



Pompa tipo Pump type	DIMENSIONI Dimensions					MOTORE ELETTRICO Electric Motor																		
						80M			90S/90L			100L			112M			132S/132M			160M/160L			
	DN _A	DN _M	a	f	h ₂	A	N°	H	Peso Weight	N°	H	Peso Weight	N°	H	Peso Weight	N°	H	Peso Weight	N°	H	Peso Weight	N°	H	Peso Weight
25-125	40	25	80	385	140	60	C01	202	56,5	C01	202	56	C01	202	55	C01	202	53	C03	222	71			
25-160	40	25	80	385	160	60	C01	222	63	C01	222	62,5	C01	222	63	C01	222	62,5	C03	222	75			
25-200	40	25	80	385	180	60	C01	250	67	C01	250	66,5	C01	250	67	C01	250	64	C01	250	79			
32-125	50	32	80	385	140	60	C01	202	58	C01	202	57,5	C01	202	56,5	C01	202	55	C03	222	73			
32-160	50	32	80	385	160	60	C01	222	61	C01	222	60,5	C01	222	61	C01	222	60,5	C03	222	73			
32-200	50	32	80	385	180	60	C01	250	68,5	C01	250	70	C01	250	69	C01	250	70	C03	250	87	C03	250	82
40-125	65	40	80	385	140	60	C01	202	59	C01	202	59,5	C01	202	58,5	C01	202	57	C03	222	75	C03	250	75
40-160	65	40	80	385	160	60	C01	222	65	C01	222	64,5	C01	222	65	C01	222	64,5	C03	222	79	C03	250	82
40-200	65	40	100	385	180	60	C01	250	68	C01	250	69	C01	250	69	C01	250	69	C03	250	85	C03	250	81
40-250	65	40	100	500	225	75				C03	270	109	C03	270	109	C03	270	110	C03	270	110	C05	270	114
50-125	80	50	100	385	160	60	C01	222	63	C01	222	62,5	C01	222	63	C01	222	62,5	C03	222	77	C03	250	80
50-160	80	50	100	385	180	60	C01	250	67	C01	250	68	C01	250	68	C01	250	68	C03	250	84	C03	250	80
50-200	80	50	100	385	200	60	C01	250	71	C01	250	72	C01	250	72	C01	250	72	C03	250	88	C03	250	84
50-250	80	50	125	500	225	75							C03	270	112	C03	270	114	C03	270	114	C05	270	120
65-125	100	65	100	385	180	75	C01	250	87	C01	250	87	C01	250	87	C01	250	84	C03	250	99	C03	250	99
65-160	100	65	100	395	200	75				C03	250	105	C03	250	106	C03	250	106	C03	250	107	C03	250	106
65-200	100	65	100	500	225	75							C03	270	117	C03	270	118	C03	270	118	C05	270	124
65-250	100	65	125	500	250	90							C05	290	129	C05	290	129	C05	290	130	C05	290	131
80-160	125	80	125	395	225	75							C03	270	111	C03	270	111	C03	270	110	C05	270	118
80-200	125	80	125	500	250	75							C03	270	111	C03	270	110	C03	270	110	C05	270	118
80-250	125	80	125	500	280	90										C05	315	138	C05	315	137	C05	315	137
100-200	125	100	125	500	280	90							C05	290	145	C05	290	144	C05	290	144	C05	290	143

DISEGNO SCHEMATICO. DIMENSIONI IN MM CON TOLLERANZE SECONDO EN 735-1995. PESI INDICATIVI IN KG, RIFERITI A POMPE IN ESECUZIONE "GS" GHISA SFEROIDALE ESCLUSO MOTORE, NON IMPEGNATIVI

Schematic drawing. Dimensions in mm with tolerances according to EN 735-1995 standards. Weights in Kgs, referred to pump in ductile iron "GS" construction without motor, not certified.

(1) DIMENSIONI IN FUNZIONE DELLA MARCA DEL MOTORE ELETTRICO INSTALLATO / Not certified dimensions according to installed motor manufacture

RIF. - Ref.: E.Z./C.T.

SOSTITUISCE - Replaces: 4000.1L3.2001.05.01

DATA - Date: NOVEMBRE 2011 - November 2011

N°.: 4000.1L3.2001.06.01

Versione **ACCOPIATA (BASE - GIUNTO)**
COUPLED construction (BASEPLATE - COUPLING)

BASAMENTI
 Base plates

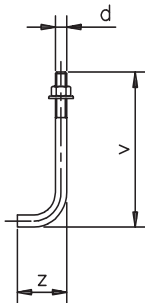
N°	B	C	E	F	L	G	øS	N°fori holes
C01	800	320	500	150	380	280	18	4
C03	1000	385	600	200	445	345	18	4
C05	1200	420	800	200	480	380	18	4
C11	1350	500	950	200	570	452	18	4
C13	1650	640	1050	300	710	592	18	4

DIMENSIONI FLANGE
 Flanges dimensions

DN _K -DN _M	D	K	P	N°fori holes
25	115	85	14	4
32	140	100	18	4
40	150	110	18	4
50	165	125	18	4
65	185	145	18	4
80	200	160	18	8
100	220	180	18	8
125	250	210	18	8

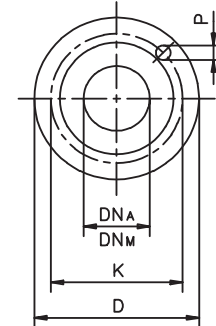
FLANGE:
 Dimensioni secondo
 UNI 2223-2229 PN16

FLANGES:
 Dimensions to
 UNI 2223-2229 NP16
 standards



BULLONI DI FONDAZIONE
 (OPTIONAL)
 Foundation bolts

d	v	z
M14	280	50
M16	350	60
M20	400	80



Pompa tipo Pump type	MOTORE ELETTRICO Electric Motor														
	180M/180L			200L			225S/225M			250M			280S/280M		
	N°	H	Peso Weight	N°	H	Peso Weight	N°	H	Peso Weight	N°	H	Peso Weight	N°	H	Peso Weight
25-125															
25-160															
25-200															
32-125															
32-160															
32-200															
40-125															
40-160															
40-200	C05	270	87												
40-250	C05	270	111												
50-125															
50-160	C05	270	86												
50-200	C05	270	90	C11	330	129									
50-250	C05	270	117	C11	330	119	C11	355	121	C13	383	152	C13	413	156
65-125															
65-160	C05	270	112	C11	330	183									
65-200	C05	270	121	C11	330	155	C11	355	155	C13	383	185	C13	413	186
65-250	C05	290	128	C11	330	167	C11	355	170	C13	383	201	C13	413	204
80-160	C05	270	117	C11	330	155	C11	355	157	C13	383	195			
80-200	C05	270	117	C11	330	148	C11	355	160	C13	383	188	C13	413	190
80-250	C05	315	137	C11	355	178	C11	355	176	C13	383	208	C13	413	210
100-200	C05	290	143	C11	330	184	C11	355	182	C13	383	214	C13	413	216

MOTORI ELETTRICI
 Electric Motors

Grandezza Frame size	Giri/min RPM	Giri/min RPM
	2900	1450
IEC	Kw	Kw
80M	0,75	0,55
	1,1	0,75
90S	1,5	1,1
90L	2,2	1,5
100L	3	2,2
		3
112M	4	4
132S	5,5-7,5	5,5
132M		7,5
160M	11-15	11
160L	18,5	15
180M	22	18,5
180L		22
200L	30-37	30
225S		37
225M	45	45
250M	55	55
280S	75	75
280M	90	90

DISEGNO SCHEMATICO. DIMENSIONI IN MM CON TOLLERANZE SECONDO EN 735-1995. PESI INDICATIVI IN KG, RIFERITI A POMPE IN ESECUZIONE "GS" GHISA SFEROIDALE ESCLUSO MOTORE, NON IMPEGNATIVI

Schematic drawing. Dimensions in mm with tolerances to EN 735-1995 standards. Weights in Kgs, referred to pump in ductile iron "GS" construction without motor, not certified.

(1) DIMENSIONI IN FUNZIONE DELLA MARCA DEL MOTORE ELETTRICO INSTALLATO / Not certified dimensions according to installed motor manufacture

RIF. - Ref.: E.Z./C.T.

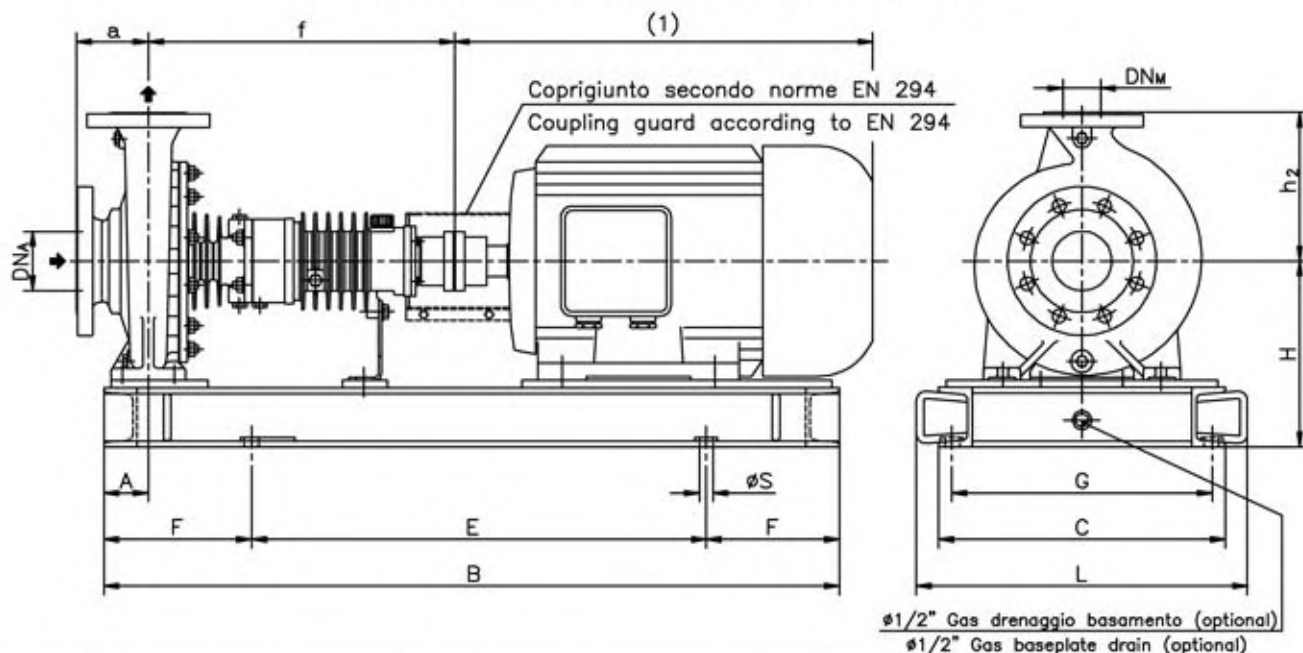
SOSTITUISCE - Replaces: 4000.1L3.2001.05.02

DATA - Date: NOVEMBRE 2011 - November 2011

N°.: 4000.1L3.2001.06.02



Versione **ACCOPIATA (BASE - GIUNTO)**
COUPLED construction (BASEPLATE - COUPLING)



Pompa tipo Pump type	DIMENSIONI Dimensions						MOTORE ELETTRICO <i>Electric Motor</i>																				
							80M			90S/90L			100L			112M			132S/132M			160M/160L					
	DN _A	DN _M	a	F	h ₂	A	N°	H	Peso Weight	N°	H	Peso Weight	N°	H	Peso Weight	N°	H	Peso Weight	N°	H	Peso Weight	N°	H	Peso Weight			
25-125	40	25	80	406	140	60	C01	202	63,5	C01	202	63	C01	202	62	C01	202	53	C03	222	77						
25-160	40	25	80	406	160	60	C01	222	70	C01	222	69,5	C01	222	70	C01	222	62,5	C03	222	82						
25-200	40	25	80	406	180	60	C01	250	74	C01	250	73,5	C01	250	74	C01	250	71	C03	250	86						
32-125	50	32	80	406	140	60	C01	202	65	C01	202	64,5	C01	202	63,5	C01	202	62	C03	222	80						
32-160	50	32	80	406	160	60	C01	222	67	C01	222	67,5	C01	222	68	C01	222	60,5	C03	222	80						
32-200	50	32	80	406	180	60	C01	250	75,5	C01	250	77	C01	250	76	C01	250	77	C03	250	94	C03	250	89			
40-125	65	40	80	406	140	60	C01	202	66	C01	202	66,5	C01	202	65,5	C01	202	63	C03	222	82	C03	250	82			
40-160	65	40	80	406	160	60	C01	222	72	C01	222	71,5	C01	222	72	C01	222	71,5	C03	222	86	C03	250	89			
40-200	65	40	100	406	180	60	C01	250	75	C01	250	76	C01	250	76	C01	250	76	C03	250	92	C03	250	88			
40-250	65	40	100	536	225	75				C03	270	116	C03	270	116	C03	270	117	C03	270	117	C05	270	121			
50-125	80	50	100	406	160	60	C01	222	70	C01	222	69,5	C01	222	70	C01	222	69,5	C03	222	84	C03	250	87			
50-160	80	50	100	406	180	60	C01	250	73	C01	250	75	C01	250	75	C01	250	75	C03	250	91	C03	250	87			
50-200	80	50	100	406	200	60	C01	250	78	C01	250	79	C01	250	79	C01	250	79	C03	250	97	C03	250	91			
50-250	80	50	125	536	225	75							C03	270	119	C03	270	121	C03	270	121	C05	270	127			
65-125	100	65	100	406	180	75	C01	250	94	C01	250	94	C01	250	94	C01	250	91	C03	250	106	C03	250	106			
65-160	100	65	100	418	200	75				C03	250	112	C03	250	113	C03	250	113	C03	250	114	C05	250	113			
65-200	100	65	100	536	225	75							C03	270	124	C03	270	125	C03	270	125	C05	270	131			
65-250	100	65	125	536	250	90							C05	290	136	C05	290	136	C05	290	137	C05	290	138			
80-160	125	80	125	418	225	75							C03	270	118	C03	270	118	C03	270	117	C05	270	125			
80-200	125	80	125	536	250	75							C03	270	118	C03	270	117	C03	270	117	C05	270	125			
80-250	125	80	125	536	280	90												C05	315	145	C05	315	144				
100-200	125	100	125	536	280	90							C05	290	152	C05	290	151	C05	290	151	C05	290	150			

DISEGNO SCHEMATICO. DIMENSIONI IN MM CON TOLLERANZE SECONDO EN 735-1995. PESI INDICATIVI IN KG, RIFERITI A POMPE IN ESECUZIONE "SP" ACCIAIO INOX ESCLUSO MOTORE, NON IMPEGNATIVI.

Schematic drawing. Dimensions in mm with tolerances to EN 735-1995 standards. Weights in Kgs, referred to pump in stainless steel "SP" construction without motor, not certified.

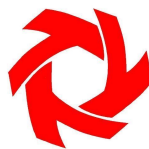
(1) DIMENSIONI IN FUNZIONE DELLA MARCA DEL MOTORE ELETTRICO INSTALLATO / Not certified dimensions according to installed motor manufacture

RIF. - Ref.: E.Z./C.T.

SOSTITUISCE - Replaces: 4S00.1L3.2001.05.01

DATA - Date: NOVEMBRE 2011 - November 2011

N°.: 4S00.1L3.2001.06.01



Versione ACCOPPIATA (BASE - GIUNTO)
COUPLED construction (BASEPLATE - COUPLING)

BASAMENTI
Base plates

N°	B	C	E	F	L	G	øS	N°fori holes
C01	800	320	500	150	380	280	18	4
C03	1000	385	600	200	445	345	18	4
C05	1200	420	800	200	480	380	18	4
C11	1350	500	950	200	570	452	18	4
C13	1650	640	1050	300	710	592	18	4

DIMENSIONI FLANGE
Flanges dimensions

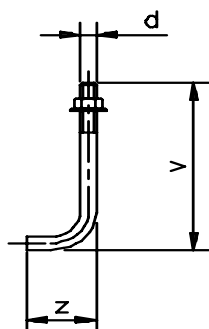
DN _A -DN _M	D	K	P	N°fori holes
25	115	85	14	4
32	140	100	18	4
40	150	110	18	4
50	165	125	18	4
65	185	145	18	4
80	200	160	18	8
100	220	180	18	8
125	250	210	18	8

FLANGE:

Dimensioni secondo
 UNI 2223-2229 PN16

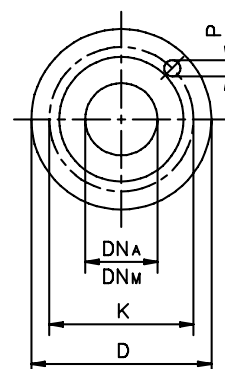
FLANGES:

Dimensions to
 UNI 2223-2229 NP16
 standards



BULLONI DI FONDAZIONE
 (OPTIONAL)
Foundation bolts

d	v	z
M14	280	50
M16	350	60
M20	400	80



Pompa tipo Pump type	MOTORE ELETTRICO <i>Electric Motor</i>														
	180M/180L			200L			225S/225M			250M			280S/280M		
	N°	H	Peso Weight	N°	H	Peso Weight	N°	H	Peso Weight	N°	H	Peso Weight	N°	H	Peso Weight
25-125															
25-160															
25-200															
32-125															
32-160															
32-200															
40-125															
40-160															
40-200	C05	270	94												
40-250	C05	270	118												
50-125															
50-160	C05	270	93												
50-200	C05	270	97	C11	330	136									
50-250	C05	270	124	C11	330	126	C11	355	128	C13	383	159	C13	413	163
65-125															
65-160	C05	270	119	C11	330	165									
65-200	C05	270	128	C11	330	162	C11	355	162	C13	383	192	C13	413	193
65-250	C05	290	136	C11	330	174	C11	355	177	C13	383	208	C13	413	211
80-160	C05	270	124	C11	330	162	C11	355	164	C13	383	202			
80-200	C05	270	124	C11	330	155	C11	355	167	C13	383	195	C13	413	197
80-250	C05	315	144	C11	355	185	C11	355	183	C13	383	215	C13	413	217
100-200	C05	290	150	C11	330	191	C11	355	189	C13	383	221	C13	413	223

MOTORI ELETTRICI
Electric Motors

Grandezza Frame size	Giri/min RPM	Giri/min RPM
	2900	1450
IEC	Kw	Kw
	80M	0,75
90S	1,1	0,75
	90L	1,5
100L	2,2	1,5
	3	2,2
112M	3	3
	4	4
132S	5,5-7,5	5,5
	132M	7,5
160M	11-15	11
	160L	18,5
180M	22	18,5
	180L	22
200L	30-37	30
225S		37
225M	45	45
250M	55	55
280S	75	75
280M	90	90

DISEGNO SCHEMATICO. DIMENSIONI IN MM CON TOLLERANZE SECONDO EN 735-1995. PESI INDICATIVI IN KG, RIFERTI A POMPE IN ESECUZIONE "SP" ACCIAIO INOX ESCLUSO MOTORE, NON IMPEGNATIVI.

Schematic drawing. Dimensions in mm with tolerances according to EN 735-1995 standards. Weights in Kgs, referred to pump in stainless steel "SP" construction without motor, not certified.

(1) DIMENSIONI IN FUNZIONE DELLA MARCA DEL MOTORE ELETTRICO INSTALLATO / Not certified dimensions according to installed motor manufacture

RIF. - Ref.: E.Z./C.T.

SOSTITUISCE - Replaces: 4S00.1L3.2001.05.02

DATA - Date: NOVEMBRE 2011 - November 2011

N°.: 4S00.1L3.2001.06.02

DIMENSIONI D'INGOMBRO
Overall dimensions
POMPE CENTRIFUGHE MONOSTADIO
Monostage centrifugal pumps
SERIE
Series

TCD/SP gr. 1-2



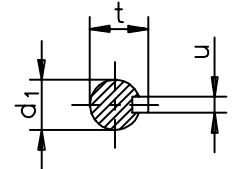
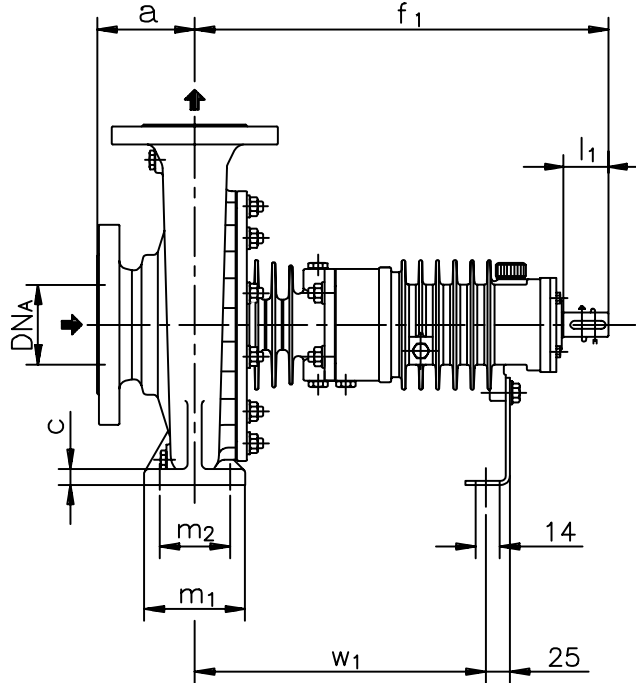
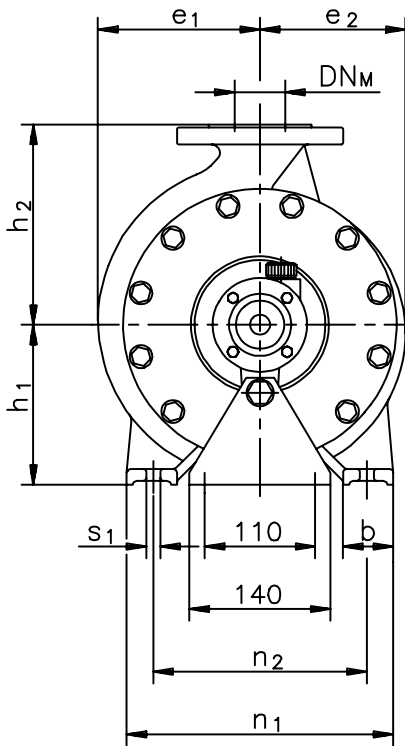
TRAVAINI PUMPS USA

Liquid Ring & Rotary Vane Vacuum Pumps and Systems

200 Newsome Drive
Yorktown, VA 23693
1-800-535-4243
www.Travaini.com

Versione ad **ASSE NUDO**

BARESHAF construction



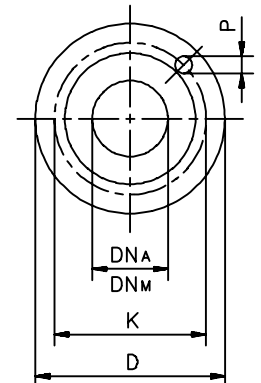
DIMENSIONI FLANGE
Flanges dimensions

DN _A	D	K	P	N° fori holes
25	115	85	14	4
32	140	100	18	4
40	150	110	18	4
50	165	125	18	4
65	185	145	18	4
80	200	160	18	8
100	220	180	18	8
125	250	210	18	8

Pompa tipo Pump type	Versione ad		ASSE NUDO		BARESHAF construction																Peso Weight
	DN _A	DN _M	a	f ₁	h ₁	h ₂	b	c	m ₁	m ₂	n ₁	n ₂	s ₁	w ₁	d ₁	l ₁	t	u	e ₁	e ₂	
25-125	40	25	80	406	112	140	50	15	100	70	190	140	14	285	24	48	27	8	95	90	30
25-160	40	25	80	406	132	160	50	16	100	70	240	190	14	285	24	48	27	8	110	108	37
25-200	40	25	80	406	160	180	50	16	100	70	240	190	14	285	24	48	27	8	133	127	41
32-125	50	32	80	406	112	140	50	15	100	70	190	140	14	285	24	48	27	8	105	91	32
32-160	50	32	80	406	132	160	50	16	100	70	240	190	14	285	24	48	27	8	125	110	35
32-200	50	32	80	406	160	180	50	16	100	70	240	190	14	285	24	48	27	8	140	130	44
40-125	65	40	80	406	112	140	50	15	100	70	210	160	14	285	24	48	27	8	115	100	34
40-160	65	40	80	406	132	160	50	16	100	70	240	190	14	285	24	48	27	8	130	115	39
40-200	65	40	100	406	160	180	50	16	100	70	265	212	14	285	24	48	27	8	146	135	43
40-250	65	40	100	536	180	225	65	18	125	95	320	250	14	372	32	78	35	10	176	163	70
50-125	80	50	100	406	132	160	50	16	100	70	240	190	14	285	24	48	27	8	130	110	36
50-160	80	50	100	406	160	180	50	16	100	70	265	212	14	285	24	48	27	8	147	125	42
50-200	80	50	100	406	160	200	50	16	100	70	265	212	14	285	24	48	27	8	161	146	46
50-250	80	50	125	536	180	225	65	18	125	95	320	250	14	372	32	78	35	10	183	169	74
65-125	100	65	100	406	160	180	65	16	125	95	280	212	14	285	24	48	27	8	145	117	61
65-160	100	65	100	418	160	200	65	16	125	95	280	212	14	296	24	48	27	8	160	130	64
65-200	100	65	100	536	180	225	65	18	125	95	320	250	14	372	32	78	35	10	174	152	70
65-250	100	65	125	536	200	250	80	20	160	120	360	280	18	372	32	78	35	10	195	175	83
80-160	125	80	125	418	180	225	65	16	125	95	320	250	14	296	24	48	27	8	186	142	69
80-200	125	80	125	536	180	250	65	18	125	95	345	280	14	372	32	78	35	10	188	158	71
80-250	125	80	125	536	225	280	80	20	160	120	400	315	18	372	32	78	35	10	225	185	90
100-200	125	100	125	536	200	280	80	20	160	120	360	280	18	372	32	78	35	10	211	170	86

FLANGE:
Dimensioni secondo
UNI 2223-2229 PN16

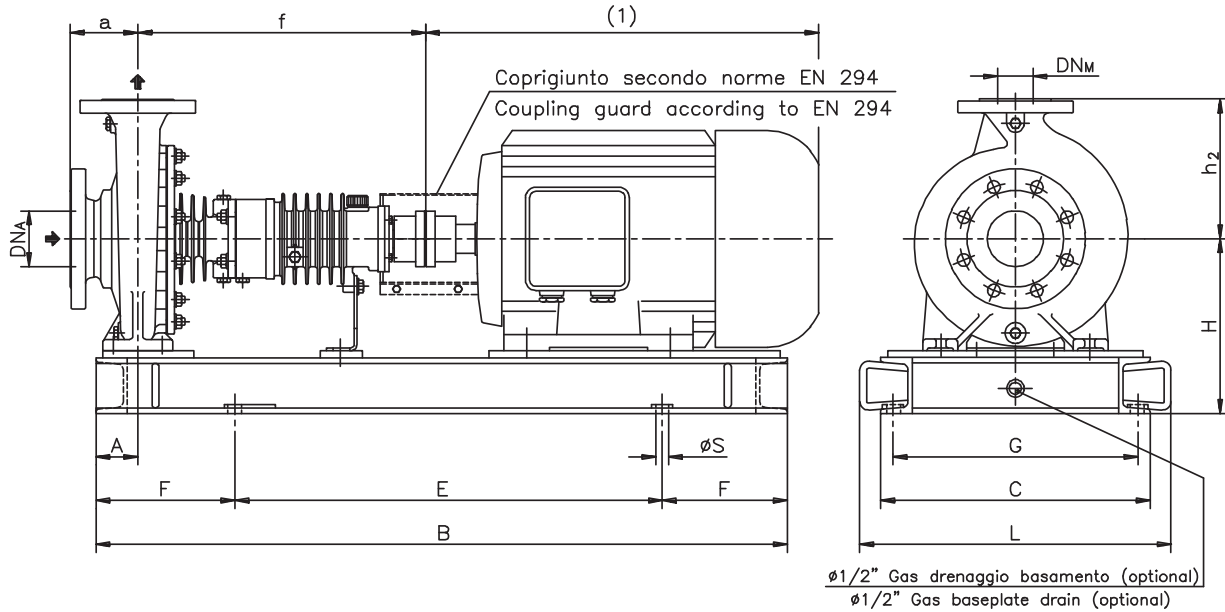
FLANGES:
Dimensions to
UNI 2223-2229 NP16
standards



Disegno schematico. Dimensioni in mm con tolleranze secondo EN 735-1995. Pesì indicativi in Kg, riferiti a pompe in esecuzione "SP" acciaio inox escluso motore, non impegnativi.
Schematic drawing. Dimensions in mm with tolerances to EN 735-1995 standards. Weights in Kgs, referred to pump in stainless steel "SP" construction without motor, not certified.

RIF. - Ref.:	F.P./C.T.	SOSTITUISCE - Replaces:	4S00.100.201.02.A
DATA - Date:	NOVEMBRE 2006 - November 2006	N°:	4S00.100.201.03.A

Versione **ACCOPIATA (BASE - GIUNTO)**
COUPLED construction (BASEPLATE - COUPLING)



Pompa tipo Pump type	DIMENSIONI Dimensions					MOTORE ELETTRICO Electric Motor																				
						80M			90S/90L			100L			112M			132S/132M			160M/160L					
	DN _A	DN _M	a	F	h ₂	A	N°	H	Peso Weight	N°	H	Peso Weight	N°	H	Peso Weight	N°	H	Peso Weight	N°	H	Peso Weight	N°	H	Peso Weight		
25-125	40	25	80	406	140	60	C01	202	63,5	C01	202	63	C01	202	62	C01	202	53	C03	222	77					
25-160	40	25	80	406	160	60	C01	222	70	C01	222	69,5	C01	222	70	C01	222	62,5	C03	222	82					
25-200	40	25	80	406	180	60	C01	250	74	C01	250	73,5	C01	250	74	C01	250	71	C03	250	86					
32-125	50	32	80	406	140	60	C01	202	65	C01	202	64,5	C01	202	63,5	C01	202	62	C03	222	80					
32-160	50	32	80	406	160	60	C01	222	67	C01	222	67,5	C01	222	68	C01	222	60,5	C03	222	80					
32-200	50	32	80	406	180	60	C01	250	75,5	C01	250	77	C01	250	76	C01	250	77	C03	250	94	C03	250	89		
40-125	65	40	80	406	140	60	C01	202	66	C01	202	66,5	C01	202	65,5	C01	202	63	C03	222	82	C03	250	82		
40-160	65	40	80	406	160	60	C01	222	72	C01	222	71,5	C01	222	72	C01	222	71,5	C03	222	86	C03	250	89		
40-200	65	40	100	406	180	60	C01	250	75	C01	250	76	C01	250	76	C01	250	76	C03	250	92	C03	250	88		
40-250	65	40	100	536	225	75				C03	270	116	C03	270	116	C03	270	117	C03	270	117	C05	270	121		
50-125	80	50	100	406	160	60	C01	222	70	C01	222	69,5	C01	222	70	C01	222	69,5	C03	222	84	C03	250	87		
50-160	80	50	100	406	180	60	C01	250	73	C01	250	75	C01	250	75	C01	250	75	C03	250	91	C03	250	87		
50-200	80	50	100	406	200	60	C01	250	78	C01	250	79	C01	250	79	C01	250	79	C03	250	97	C03	250	91		
50-250	80	50	125	536	225	75							C03	270	119	C03	270	121	C03	270	121	C05	270	127		
65-125	100	65	100	406	180	75	C01	250	94	C01	250	94	C01	250	94	C01	250	91	C03	250	106	C03	250	106		
65-160	100	65	100	418	200	75				C03	250	112	C03	250	113	C03	250	113	C03	250	114	C05	250	113		
65-200	100	65	100	536	225	75							C03	270	124	C03	270	125	C03	270	125	C05	270	131		
65-250	100	65	125	536	250	90							C05	290	136	C05	290	136	C05	290	137	C05	290	138		
80-160	125	80	125	418	225	75							C03	270	118	C03	270	118	C03	270	117	C05	270	125		
80-200	125	80	125	536	250	75							C03	270	118	C03	270	117	C03	270	117	C05	270	125		
80-250	125	80	125	536	280	90												C05	315	145	C05	315	144			
100-200	125	100	125	536	280	90							C05	290	152	C05	290	151	C05	290	151	C05	290	150		

DISEGNO SCHEMATICO. DIMENSIONI IN MM CON TOLLERANZE SECONDO EN 735-1995. PESI INDICATI IN KG, RIFERITI A POMPE IN ESECUZIONE "SP" ACCIAIO INOX ESCLUSO MOTORE, NON IMPEGNATIVI.

Schematic drawing. Dimensions in mm with tolerances to EN 735-1995 standards. Weights in Kgs, referred to pump in stainless steel "SP" construction without motor, not certified.

(1) DIMENSIONI IN FUNZIONE DELLA MARCA DEL MOTORE ELETTRICO INSTALLATO / Not certified dimensions according to installed motor manufacture

RIF. - Ref.: E.Z./C.T.

SOSTITUISCE - Replaces: 4S00.1L3.2001.05.01

DATA - Date: NOVEMBRE 2011 - November 2011

N°.: 4S00.1L3.2001.06.01

Versione **ACCOPIATA (BASE - GIUNTO)**
COUPLED construction (BASEPLATE - COUPLING)

BASAMENTI
 Base plates

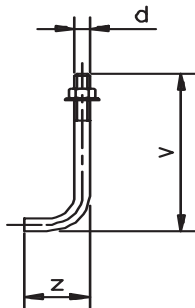
N°	B	C	E	F	L	G	øS	N°fori holes
C01	800	320	500	150	380	280	18	4
C03	1000	385	600	200	445	345	18	4
C05	1200	420	800	200	480	380	18	4
C11	1350	500	950	200	570	452	18	4
C13	1650	640	1050	300	710	592	18	4

DIMENSIONI FLANGE
 Flanges dimensions

DN _A -DN _M	D	K	P	N°fori holes
25	115	85	14	4
32	140	100	18	4
40	150	110	18	4
50	165	125	18	4
65	185	145	18	4
80	200	160	18	8
100	220	180	18	8
125	250	210	18	8

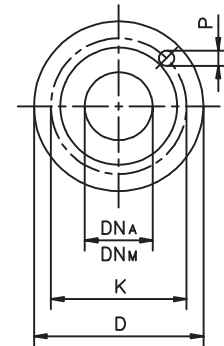
FLANGE:
 Dimensioni secondo
 UNI 2223-2229 PN16

FLANGES:
 Dimensions to
 UNI 2223-2229 NP16
 standards



BULLONI DI FONDAZIONE
 (OPTIONAL)
 Foundation bolts

d	v	z
M14	280	50
M16	350	60
M20	400	80



Pompa tipo Pump type	MOTORE ELETTRICO Electric Motor														
	180M/180L			200L			225S/225M			250M			280S/280M		
	N°	H	Peso Weight	N°	H	Peso Weight	N°	H	Peso Weight	N°	H	Peso Weight	N°	H	Peso Weight
25-125															
25-160															
25-200															
32-125															
32-160															
32-200															
40-125															
40-160															
40-200	C05	270	94												
40-250	C05	270	118												
50-125															
50-160	C05	270	93												
50-200	C05	270	97	C11	330	136									
50-250	C05	270	124	C11	330	126	C11	355	128	C13	383	159	C13	413	163
65-125															
65-160	C05	270	119	C11	330	165									
65-200	C05	270	128	C11	330	162	C11	355	162	C13	383	192	C13	413	193
65-250	C05	290	136	C11	330	174	C11	355	177	C13	383	208	C13	413	211
80-160	C05	270	124	C11	330	162	C11	355	164	C13	383	202			
80-200	C05	270	124	C11	330	155	C11	355	167	C13	383	195	C13	413	197
80-250	C05	315	144	C11	355	185	C11	355	183	C13	383	215	C13	413	217
100-200	C05	290	150	C11	330	191	C11	355	189	C13	383	221	C13	413	223

MOTORI ELETTRICI
 Electric Motors

Grandezza Frame size	Giri/min RPM	Giri/min RPM
	2900	1450
IEC	Kw	Kw
80M	0,75 1,1	0,55 0,75
90S	1,5	1,1
90L	2,2	1,5
100L	3	2,2 3
112M	4	4
132S	5,5-7,5	5,5
132M		7,5
160M	11-15	11
160L	18,5	15
180M	22	18,5
180L		22
200L	30-37	30
225S		37
225M	45	45
250M	55	55
280S	75	75
280M	90	90

DISEGNO SCHEMATICO. DIMENSIONI IN MM CON TOLLERANZE SECONDO EN 735-1995. PESI INDICATI IN KG, RIFERITI A POMPE IN ESECUZIONE "SP" ACCIAIO INOX ESCLUSO MOTORE, NON IMPEGNATIVI.

Schematic drawing. Dimensions in mm with tolerances according to EN 735-1995 standards. Weights in Kgs, referred to pump in stainless steel "SP" construction without motor, not certified.

(1) DIMENSIONI IN FUNZIONE DELLA MARCA DEL MOTORE ELETTRICO INSTALLATO / Not certified dimensions according to installed motor manufacture

RIF. - Ref.: E.Z./C.T.

SOSTITUISCE - Replaces: 4S00.1L3.2001.05.02

DATA - Date: NOVEMBRE 2011 - November 2011

N°.: 4S00.1L3.2001.06.02