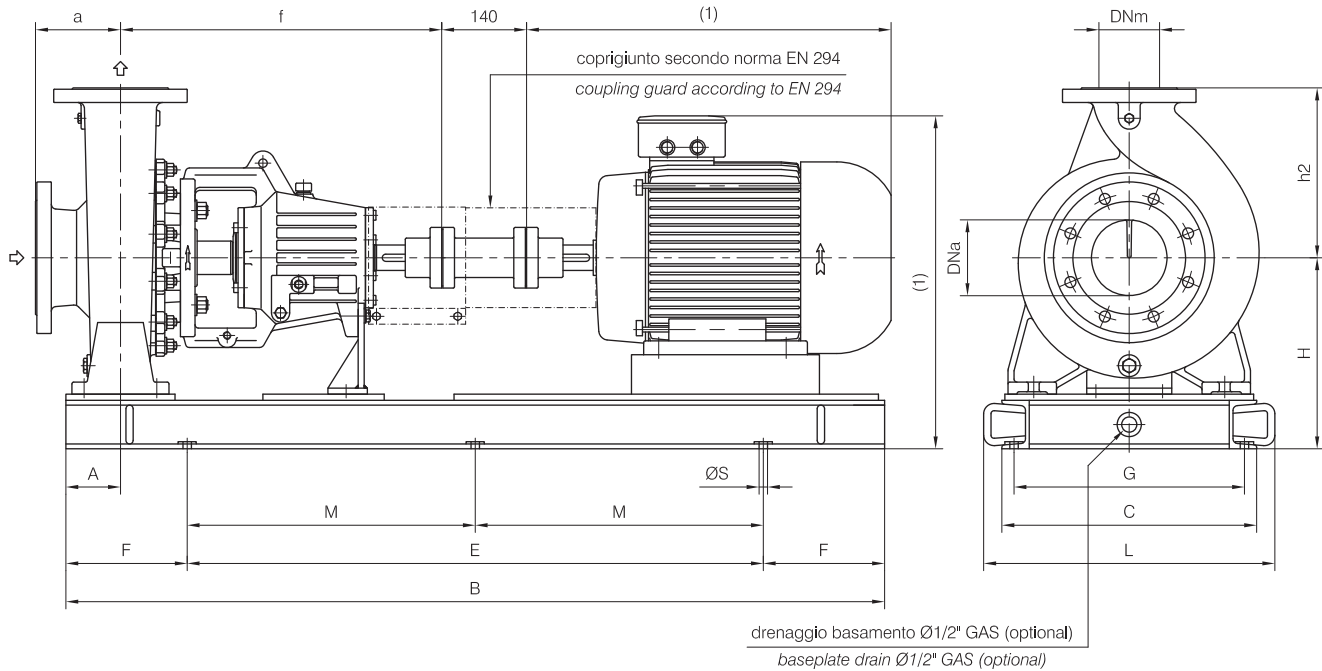


Versione **ACCOPIATA**
(BASE-GIUNTO SPAZIATORE)

COUPLED construction
(BASEPLATE-SPACER COUPLING)



(1) Dimensioni in funzione della marca del motore installato.
 (1) Not certified dimensions according to installed motor manufacture.

Dimensioni costruttive versione Accoppiata Coupled construction dimensions																			
POMPA TIPO Pump type	Dimensioni pompa Pump dimensions						motore 225S/M			motore 250M			motore 280S/M			motore 315S/M			
	gr.	DNa	DNm	a	f	h2	A	N°	H	Peso Weight	N°	H	Peso Weight	N°	H	Peso Weight	N°	H	Peso Weight
65-315	3	100	65	125	530	280	90	C13	413	292	C13	383	295	C13	413	295	C21	493	362
80-315	3	125	80	125	530	315	90	C13	413	297	C13	383	290	C13	413	310	C21	493	357
100-250	3	125	100	140	530	280	90	C13	413	187	C13	383	290	C13	413	290	C21	493	357
100-315	3	125	100	140	530	315	90	C13	413	312	C13	383	305	C13	413	325	C21	493	372
125-250	3	150	125	140	530	355	90	C13	413	302	C13	383	300	C13	413	315	C21	493	362
125-315	3	150	125	140	530	355	110	C13	413	340	C13	413	350	C13	413	335	C21	493	397
150-250	3	200	150	160	530	375	110	C13	413	340	C13	413	350	C13	413	335	-	-	-

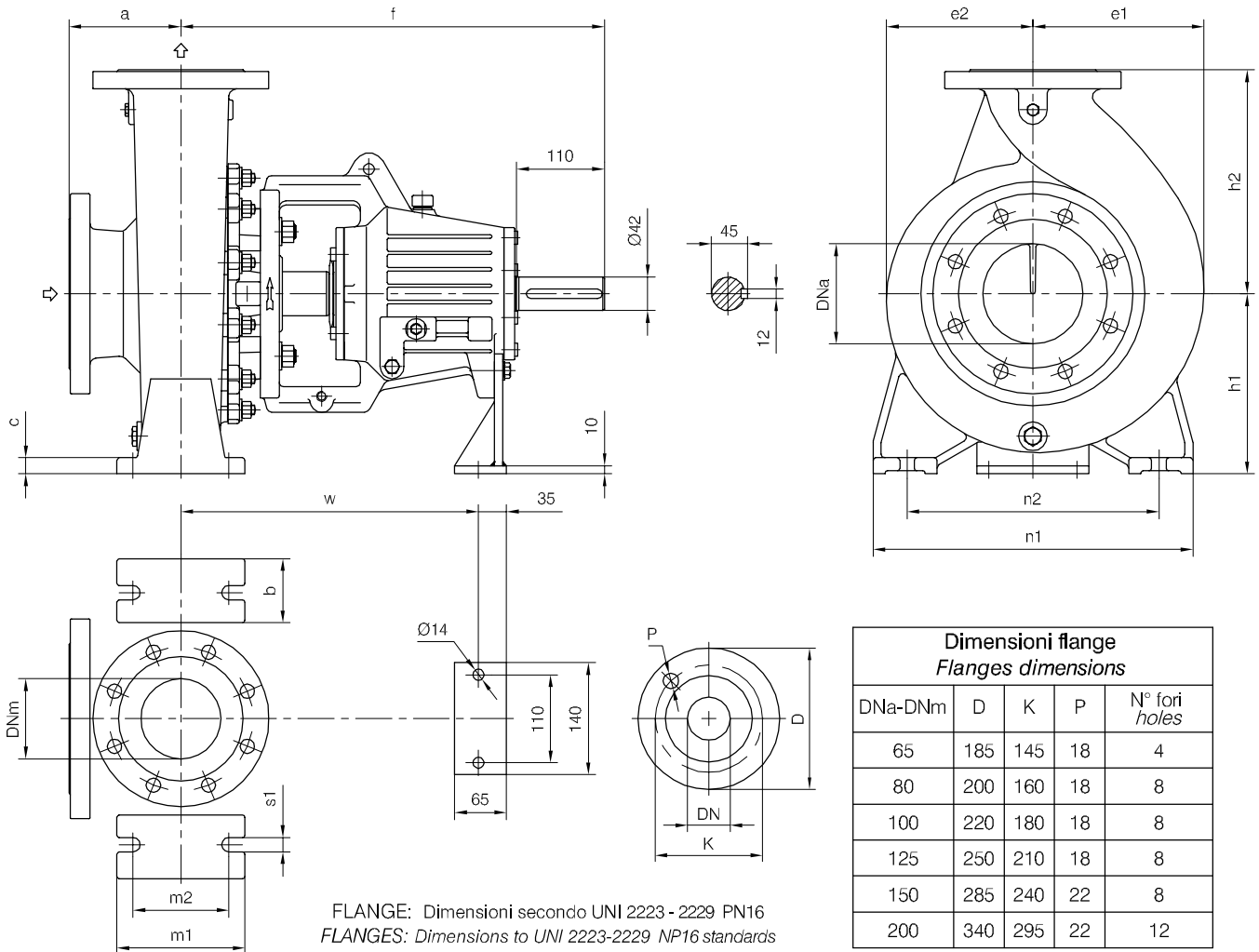
MOTORI ELETTRICI Electric Motors													
Grandezza Frame size IEC	Giri/min. RPM 960		Giri/min. RPM 1450		Giri/min. RPM 2900		Grandezza Frame size IEC	Giri/min. RPM 960		Giri/min. RPM 1450		Giri/min. RPM 2900	
	kW	HP	kW	HP	kW	HP		kW	HP	kW	HP	kW	HP
132 S	3	4	5.5	7.5	5.5-7.5	7.5-10	225 S	-	-	37	50	-	-
132 M	4-5.5	5.5-7.5	7.5	10	-	-	225 M	30	40	45	60	45	60
160 M	7.5	10	11	15	11-15	15-20	250 M	37	50	55	75	55	75
160 L	11	15	15	20	18.5	25	280 S	45	60	75	100	75	100
180 M	-	-	18.5	25	22	30	280 M	55	75	90	125	90	125
180 L	15	20	22	30			315 S	75	100	110	150	110	150
200 L	18.5-22	25-30	30	40	30-37	40-50	315 M	90	125	132	180	132	180

Disegno schematico. Dimensioni in mm con tolleranze secondo EN 735-1995.
 Pesì indicativi in Kg, riferiti a pompe in ghisa escluso motore, non impegnativi.
 Schematic drawing. Dimensions in mm with tolerances to EN 735-1995 standards.
 Weights in Kgs, referred to pumps in cast iron without motor, not certified.



Versione ad **ASSE NUDO**
 Unificata secondo ISO 2858

BARESHAF construction
 According to ISO 2858 standards



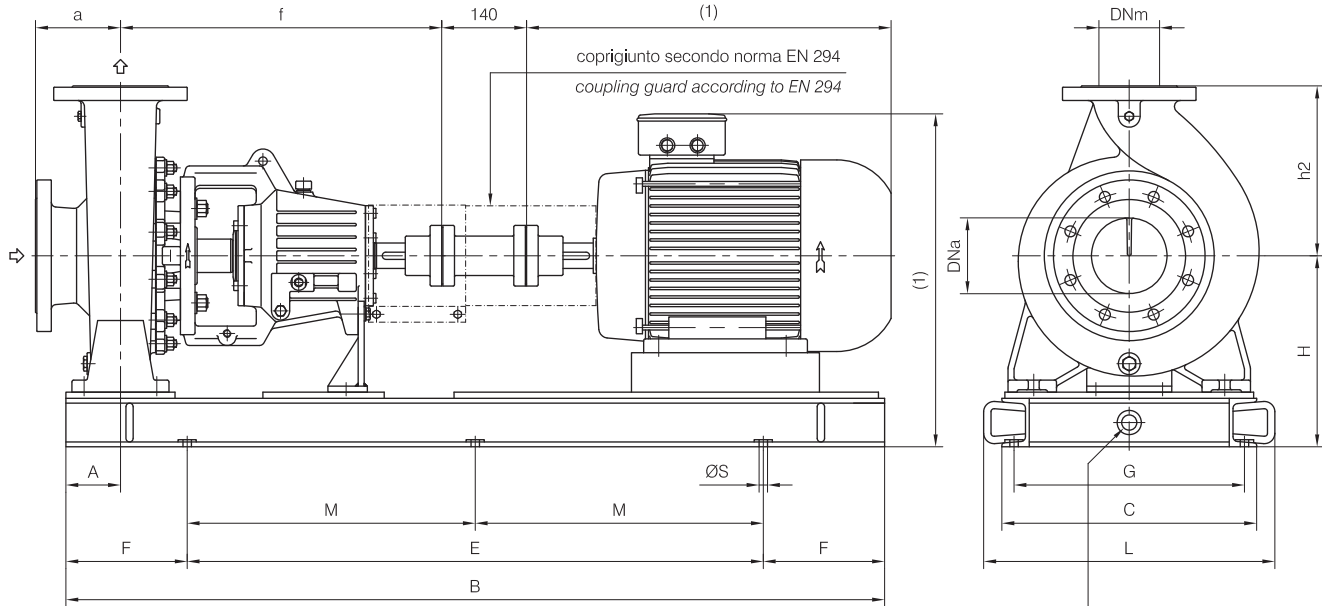
Dimensioni flange Flanges dimensions				
DNa-DNm	D	K	P	N° fori holes
65	185	145	18	4
80	200	160	18	8
100	220	180	18	8
125	250	210	18	8
150	285	240	22	8
200	340	295	22	12

POMPA TIPO Pump type	Dimensioni costruttive Construction dimensions															Peso Weight		
	gr.	DNa	DNm	a	f	h1	h2	b	c	m1	m2	n1	n2	s1	w		e1	e2
65-315	3	100	65	125	530	225	280	80	20	160	120	400	315	18	370	226	209	141
80-315	3	125	80	125	530	250	315	80	20	160	120	400	315	18	370	232	210	142
100-250	3	125	100	140	530	225	280	80	20	160	120	400	315	18	370	215	183	135
100-315	3	125	100	140	530	250	315	80	20	160	120	400	315	18	370	250	225	157
125-250	3	150	125	140	530	250	355	80	20	160	120	400	315	18	370	245	200	147
125-315	3	150	125	140	530	280	355	100	22	200	150	500	400	22	370	270	230	183
150-250	3	200	150	160	530	280	375	100	22	200	150	500	400	22	370	300	240	182

Disegno schematico. Dimensioni in mm con tolleranze secondo EN 735-1995.
 Pesì indicativi in Kg, riferiti a pompe in ghisa escluso motore, non impegnativi.
 Schematic drawing. Dimensions in mm with tolerances to EN 735-1995 standards.
 Weights in Kgs, referred to pumps in cast iron without motor, not certified.

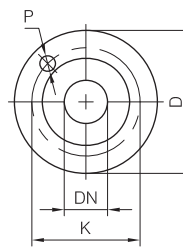
Versione **ACCOPIATA**
(BASE-GIUNTO SPAZIATORE)

COUPLED construction
(BASEPLATE-SPACER COUPLING)



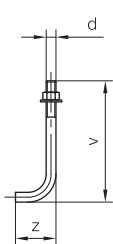
drenaggio basamento Ø1/2" GAS (optional)
 baseplate drain Ø1/2" GAS (optional)

Dimensioni Basamento Baseplate dimensions									
N°	B	C	E	F	L	M	G	ØS	N° fori holes
C05	1200	420	800	200	480	-	380	18	4
C11	1350	500	950	200	570	-	452	18	4
C13	1650	640	1050	300	710	-	592	18	4
C21	1850	720	1350	250	792	675	670	22	6



Dimensioni flange Flanges dimensions				
DNa-DNm	D	K	P	N° fori holes
65	185	145	18	4
80	200	160	18	8
100	220	180	18	8
125	250	210	18	8
150	285	240	22	8
200	340	295	22	12

FLANGE: Dimensioni secondo UNI 2223 - 2229 PN16
 FLANGES: Dimensions to UNI 2223-2229 NP16 standards



Bulloni di fondazione (optional)
Foundation bolts (optional)

d	v	z
M14	280	50
M16	350	60
M20	400	80

(1) Dimensioni in funzione della marca del motore installato.
 (1) Not certified dimensions according to installed motor manufacture.

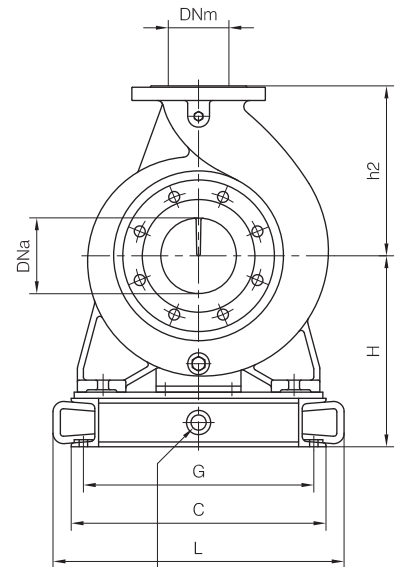
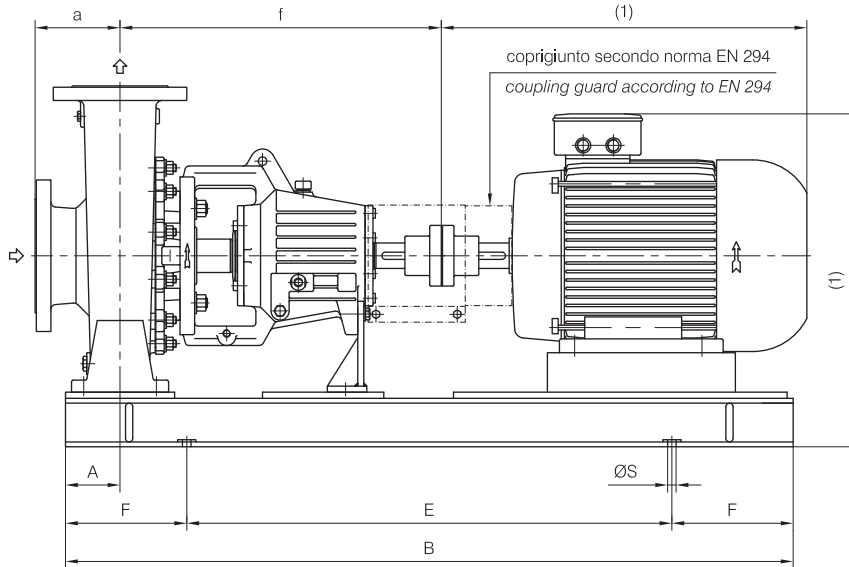
Dimensioni costruttive versione Accoppiata Coupled construction dimensions																			
POMPA TIPO Pump type	Dimensioni pompa Pump dimensions							motore 132 motor			motore 160M/L motor			motore 180M/L motor			motore 200L motor		
	gr.	DNa	DNm	a	f	h2	A	N°	H	Peso Weight	N°	H	Peso Weight	N°	H	Peso Weight	N°	H	Peso Weight
65-315	3	100	65	125	530	280	90	C05	315	205	C11	355	210	C11	355	200	C11	355	230
80-315	3	125	80	125	530	315	90	C05	340	210	C11	380	210	C11	380	200	C11	380	230
100-250	3	125	100	140	530	280	90	C05	315	200	C11	355	205	C11	355	195	C11	355	225
100-315	3	125	100	140	530	315	90	C05	340	225	C11	380	225	C11	380	215	C11	380	245
125-250	3	150	125	140	530	355	90	C05	340	215	C11	380	215	C11	380	205	C11	380	235
125-315	3	150	125	140	530	355	110	-	-	-	C13	413	340	C13	413	340	C13	413	335
150-250	3	200	150	160	530	375	110	-	-	-	C13	413	340	C13	413	340	C13	413	335

Disegno schematico. Dimensioni in mm con tolleranze secondo EN 735-1995.
 Pesi indicativi in Kg, riferiti a pompe in ghisa escluso motore, non impegnativi.
 Schematic drawing. Dimensions in mm with tolerances to EN 735-1995 standards.
 Weights in Kgs, referred to pumps in cast iron without motor, not certified.



Versione **ACCOPIATA**
(BASE-GIUNTO)

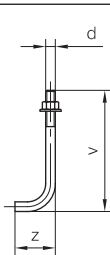
COUPLED construction
(BASEPLATE-COUPLING)



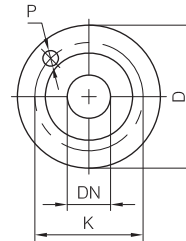
Dimensioni Basamento
Baseplate dimensions

N°	B	C	E	F	L	G	ØS	N° fori holes
C05	1200	420	800	200	480	380	18	4
C11	1350	500	950	200	570	452	18	4
C13	1650	640	1050	300	710	592	18	4

Bulloni di fondazione (optional)
Foundation bolts (optional)



d	v	z
M14	280	50
M16	350	60



Dimensioni flange
Flanges dimensions

DNa-DNm	D	K	P	N° fori holes
65	185	145	18	4
80	200	160	18	8
100	220	180	18	8
125	250	210	18	8
150	285	240	22	8
200	340	295	22	12

FLANGE: Dimensioni secondo UNI 2223 - 2229 PN16
 FLANGES: Dimensions to UNI 2223-2229 NP16 standards

(1) Dimensioni in funzione della marca del motore installato.
 (1) Not certified dimensions according to installed motor manufacture.

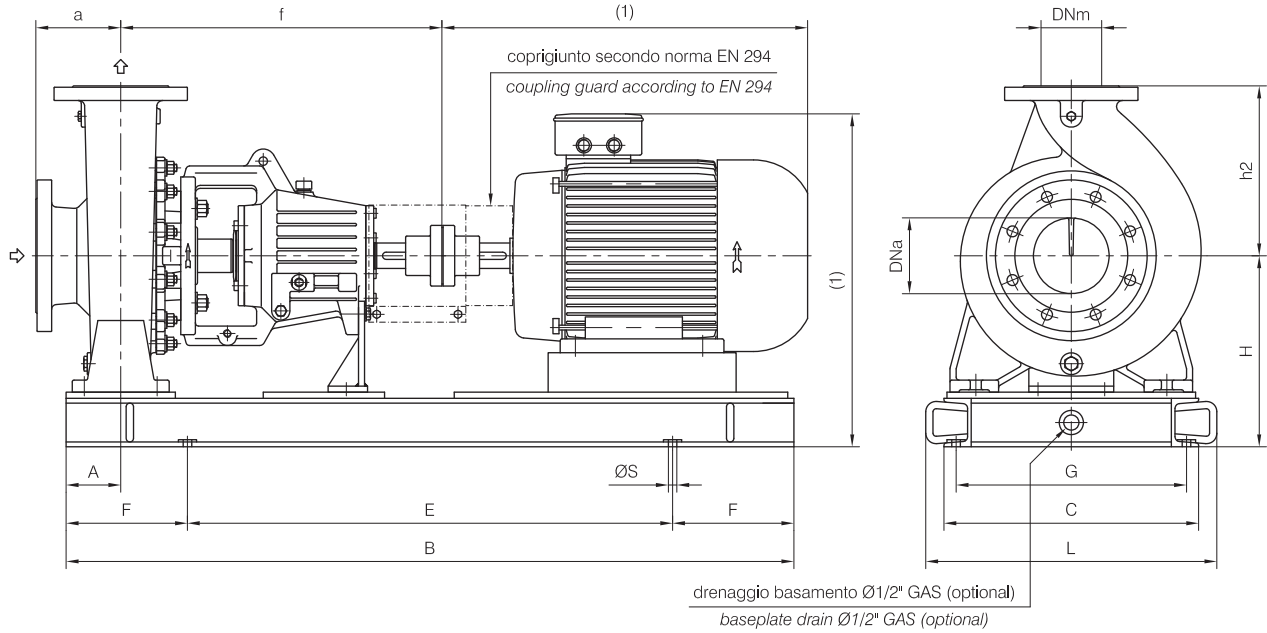
Dimensioni costruttive versione Accoppiata *Coupled construction dimensions*

POMPA TIPO Pump type	gr.	Dimensioni pompa Pump dimensions						motore 132 motor			motore 160M/L motor			motore 180M/L motor			motore 200L motor		
		DNa	DNm	a	f	h2	A	N°	H	Peso Weight	N°	H	Peso Weight	N°	H	Peso Weight	N°	H	Peso Weight
65-315	3	100	65	125	530	280	90	C05	315	205	C05	315	200	C05	315	200	C11	355	230
80-315	3	125	80	125	530	315	90	C05	340	210	C05	340	210	C05	340	200	C11	380	230
100-250	3	125	100	140	530	280	90	C05	315	200	C05	315	195	C05	315	195	C11	355	225
100-315	3	125	100	140	530	315	90	C05	340	225	C05	340	225	C05	340	215	C11	380	245
125-250	3	150	125	140	530	355	90	C05	340	215	C05	340	215	C05	340	205	C11	380	235
125-315	3	150	125	140	530	355	110	-	-	-	C13	413	340	C13	413	340	C13	413	335
150-250	3	200	150	160	530	375	110	-	-	-	C13	413	340	C13	413	340	C13	413	335

Disegno schematico. Dimensioni in mm con tolleranze secondo EN 735-1995.
 Pesì indicativi in Kg, riferiti a pompe in ghisa escluso motore, non impegnativi.
 Schematic drawing. Dimensions in mm with tolerances to EN 735-1995 standards.
 Weights in Kgs, referred to pumps in cast iron without motor, not certified.

Versione **ACCOPIATA**
(BASE-GIUNTO)

COUPLED construction
(BASEPLATE-COUPLING)



(1) Dimensioni in funzione della marca del motore installato.
 (1) Not certified dimensions according to installed motor manufacture.

Dimensioni costruttive versione Accoppiata Coupled construction dimensions																			
POMPA TIPO Pump type	Dimensioni pompa Pump dimensions						motore 225S/M motor			motore 250M motor			motore 280S/M motor			motore 315S/M motor			
	gr.	DNa	DNm	a	f	h2	A	N°	H	Peso Weight	N°	H	Peso Weight	N°	H	Peso Weight	N°	H	Peso Weight
65-315	3	100	65	125	530	280	90	C11	355	230	C13	383	295	C13	413	295	C13	448	315
80-315	3	125	80	125	530	315	90	C11	380	235	C13	383	290	C13	413	310	C13	448	310
100-250	3	125	100	140	530	280	90	C11	355	225	C13	383	290	C13	413	290	C13	448	310
100-315	3	125	100	140	530	315	90	C11	380	250	C13	383	305	C13	413	325	C13	448	325
125-250	3	150	125	140	530	355	90	C11	380	240	C13	383	300	C13	413	315	C13	448	315
125-315	3	150	125	140	530	355	110	C13	413	340	C13	413	350	C13	413	335	C13	448	350
150-250	3	200	150	160	530	375	110	C13	413	340	C13	413	350	C13	413	335	-	-	-

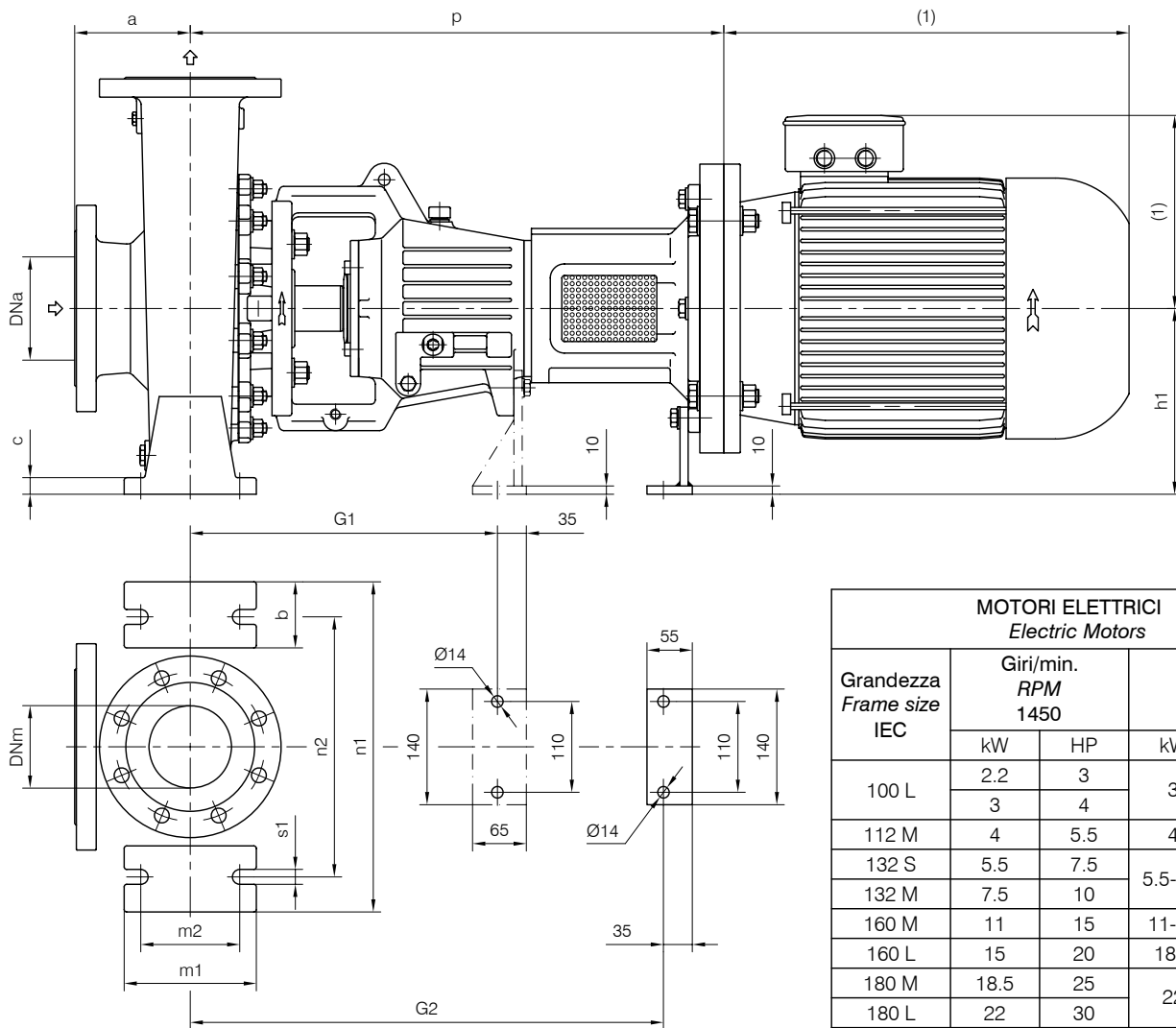
MOTORI ELETTRICI Electric Motors													
Grandezza Frame size IEC	Giri/min. RPM 960		Giri/min. RPM 1450		Giri/min. RPM 2900		Grandezza Frame size IEC	Giri/min. RPM 960		Giri/min. RPM 1450		Giri/min. RPM 2900	
	kW	HP	kW	HP	kW	HP		kW	HP	kW	HP	kW	HP
132 S	3	4	5.5	7.5	5.5-7.5	7.5-10	225 S	-	-	37	50	-	-
132 M	4-5.5	5.5-7.5	7.5	10	-	-	225 M	30	40	45	60	45	60
160 M	7.5	10	11	15	11-15	15-20	250 M	37	50	55	75	55	75
160 L	11	15	15	20	18.5	25	280 S	45	60	75	100	75	100
180 M	-	-	18.5	25	22	30	280 M	55	75	90	125	90	125
180 L	15	20	22	30			315 S	75	100	110	150	110	150
200 L	18.5-22	25-30	30	40	30-37	40-50	315 M	90	125	132	180	132	180

Disegno schematico. Dimensioni in mm con tolleranze secondo EN 735-1995.
 Pesì indicativi in Kg, riferiti a pompe in ghisa escluso motore, non impegnativi.
 Schematic drawing. Dimensions in mm with tolerances to EN 735-1995 standards.
 Weights in Kgs, referred to pumps in cast iron without motor, not certified.



Versione **MONOBLOCCO**

CLOSE-COUPLED construction



MOTORI ELETTRICI Electric Motors				
Grandezza Frame size IEC	Giri/min. RPM 1450		Giri/min. RPM 2900	
	kW	HP	kW	HP
100 L	2.2	3	3	4
	3	4		
112 M	4	5.5	4	5.5
132 S	5.5	7.5	5.5-7.5	7.5-10
132 M	7.5	10		
160 M	11	15	11-15	15-20
160 L	15	20	18.5	25
180 M	18.5	25	22	30
180 L	22	30		
200 L	30	40	-	-

(1) Dimensioni in funzione della marca del motore installato.
 (1) Not certified dimensions according to installed motor manufacture.

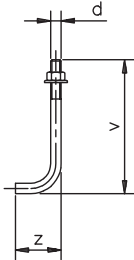
POMPA TIPO Pump type	Dimensioni costruttive Monoblocco Close-coupled construction dimensions												
	gr.	motore motor 100-112			motore motor 132			motore motor 160-180			motore motor 200		
	p	G1	Peso Weight	p	G2	Peso Weight	p	G2	Peso Weight	p	G2	Peso Weight	
65-315	3	596	370	154	617	573	157	646	573	174	649	573	180
80-315	3	596	370	155	617	573	158	646	573	175	649	573	181
100-250	3	596	370	149	617	573	151	646	573	168	649	573	175
100-315	3	596	370	174	617	573	177	646	573	194	649	573	200
125-250	3	596	370	161	617	573	163	646	573	180	649	573	187
125-315	3	596	370	199	617	573	202	646	573	219	649	573	225
150-250	3	596	370	196	617	573	198	646	573	215	650	574	222

Disegno schematico. Dimensioni in mm con tolleranze secondo EN 735-1995.
 Pesì indicativi in Kg, riferiti a pompe in ghisa escluso motore, non impegnativi.
 Schematic drawing. Dimensions in mm with tolerances to EN 735-1995 standards.
 Weights in Kgs, referred to pumps in cast iron without motor, not certified.

Versione **ACCOPIATA (BASE - GIUNTO)**
COUPLED construction (BASEPLATE - COUPLING)

BASAMENTI
 Base plates

N°	B	C	E	F	L	G	øS	N°fori holes
C01	800	320	500	150	380	280	18	4
C03	1000	385	600	200	445	345	18	4
C05	1200	420	800	200	480	380	18	4
C11	1350	500	950	200	570	452	18	4
C13	1650	640	1050	300	710	592	18	4



BULLONI DI FONDAZIONE
 (OPTIONAL)
 Foundation bolts

d	v	z
M14	280	50
M16	350	60
M20	400	80

DIMENSIONI FLANGE
 Flanges dimensions

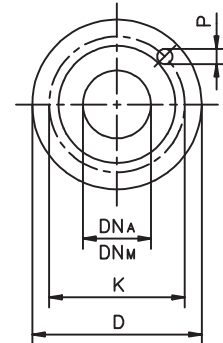
DN _A -DN _M	D	K	P	N°fori holes
25	115	85	14	4
32	140	100	18	4
40	150	110	18	4
50	165	125	18	4
65	185	145	18	4
80	200	160	18	8
100	220	180	18	8
125	250	210	18	8

FLANGE:

Dimensioni secondo
 UNI 2223-2229 PN16

FLANGES:

Dimensions to UNI 2223-2229
 NP16 standards



Pompa tipo Pump type	MOTORE ELETTRICO Electric Motor														
	180M/180L			200L			225S/225M			250M			280S/280M		
	N°	H	Peso Weight	N°	H	Peso Weight	N°	H	Peso Weight	N°	H	Peso Weight	N°	H	Peso Weight
25-125															
25-160															
25-200															
32-125															
32-160															
32-200															
32-250	C05	270	130												
40-125															
40-160															
40-200	C05	270	97												
40-250	C05	270	131	C11	330	172									
40-315	C05	290	136	C11	330	176									
50-125															
50-160	C05	270	96												
50-200	C05	270	98	C11	330	137									
50-250	C05	270	136	C11	330	138	C11	355	140	C13	383	171	C13	413	175
50-315	C05	315	138	C11	355	176	C11	355	172	C13	383	206	C13	413	208
65-125															
65-160	C05	270	127	C11	330	198									
65-200	C05	270	139	C11	330	173	C11	355	173	C13	383	203	C13	413	204
65-250	C05	290	138	C11	330	177	C11	355	180	C13	383	211	C13	413	214
80-160	C05	270	130	C11	330	173	C11	355	175	C13	383	203			
80-200	C05	270	147	C11	330	188	C11	355	190	C13	383	218	C13	413	220
80-250	C05	315	162	C11	355	203	C11	355	201	C13	383	233	C13	413	235
100-200	C05	290	163	C11	330	204	C11	355	202	C13	383	234	C13	413	236

MOTORI ELETTRICI
 Electric Motors

Grandezza Frame size	Giri/min RPM	Giri/min RPM
	2900	1450
IEC	Kw	Kw
80M	0,75 1,1	0,55 0,75
90S	1,5	1,1
90L	2,2	1,5
100L	3	2,2 3
112M	4	4
132S		5,5
132M	5,5-7,5	7,5
160M	11-15	11
160L	18,5	15
180M	22	18,5
180L		22
200L	30-37	30
225S		37
225M	45	45
250M	55	55
280S	75	75
280M	90	90

DISEGNO SCHEMATICO. DIMENSIONI IN MM CON TOLLERANZE SECONDO EN 735-1995. PESI INDICATIVI IN KG, RIFERITI A POMPE IN ESECUZIONE "GS" GHISA SFEROIDALE ESCLUSO MOTORE, NON IMPEGNATIVI.

Schematic drawing. Dimensions in mm with tolerances according to EN 735-1995 standards. Weights in Kgs, referred to pump in ductile iron "GS" construction without motor, not certified.

(1) DIMENSIONI IN FUNZIONE DELLA MARCA DEL MOTORE ELETTRICO INSTALLATO / Not certified dimensions according to installed motor manufacture

RIF. - Ref.: E.Z./C.T.

SOSTITUISCE - Replaces: 3700.1L3.2001.07.02

DATA - Date: NOVEMBRE 2011 - November 2011

N°.: 3700.1L3.2001.08.02

Versione **ACCOPIATA (BASE - GIUNTO SPAZIATORE)**
COUPLED construction (BASEPLATE - SPACER COUPLING)

BASAMENTI
 Base plates

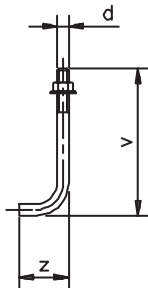
N°	B	C	E	F	L	G	øS	N°fori holes
C01	800	320	500	150	380	280	18	4
C03	1000	385	600	200	445	345	18	4
C05	1200	420	800	200	480	380	18	4
C11	1350	500	950	200	570	452	18	4
C13	1650	640	1050	300	710	592	18	4

DIMENSIONI FLANGE
 Flanges dimensions

DN _A -DN _M	D	K	P	N°fori holes
25	115	85	14	4
32	140	100	18	4
40	150	110	18	4
50	165	125	18	4
65	185	145	18	4
80	200	160	18	8
100	220	180	18	8
125	250	210	18	8

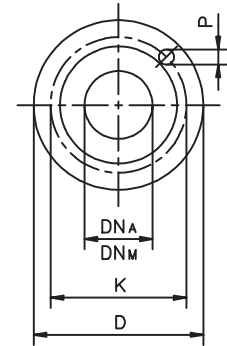
FLANGE:
 Dimensioni secondo
 UNI 2223-2229 PN16

FLANGES:
 Dimensions to
 UNI 2223-2229 NP16
 standards



BULLONI DI FONDAZIONE
 (OPTIONAL)
 Foundation bolts

d	v	z
M14	280	50
M16	350	60
M20	400	80



Pompa tipo Pump type	MOTORE ELETTRICO Electric Motor														
	180M/180L			200L			225S/225M			250M			280S/280M		
	N°	H	Peso Weight	N°	H	Peso Weight	N°	H	Peso Weight	N°	H	Peso Weight	N°	H	Peso Weight
25-125															
25-160															
25-200															
32-125															
32-160															
32-200															
32-250	C05	270	134												
40-125															
40-160															
40-200	C05	270	99												
40-250	C11	310	172												
40-315	C11	330	177	C11	330	207									
50-125															
50-160	C05	270	98												
50-200	C05	270	100	C11	330	139									
50-250	C11	310	180	C11	330	170	C13	358	172	C13	383	173	C13	413	177
50-315	C11	355	179	C11	355	208	C13	358	204	C13	383	208	C13	413	210
65-125															
65-160	C11	310	168	C11	330	230									
65-200	C11	310	180	C11	330	205	C13	358	205	C13	383	205	C13	413	206
65-250	C11	330	179	C11	330	209	C13	358	212	C13	383	213	C13	413	216
80-160	C11	310	171	C11	330	205	C13	358	207	C13	383	205			
80-200	C11	310	188	C11	330	220	C13	358	222	C13	383	220	C13	413	222
80-250	C11	355	203	C11	355	235	C13	358	233	C13	383	235	C13	413	237
100-200	C11	330	204	C11	330	236	C13	358	234	C13	383	236	C13	413	238

MOTORI ELETTRICI
 Electric Motors

Grandezza Frame size	Giri/min RPM	Giri/min RPM
	2900	1450
IEC	Kw	Kw
80M	0,75 1,1	0,55 0,75
90S	1,5	1,1
90L	2,2	1,5
100L	3	2,2 3
112M	4	4
132S	5,5-7,5	5,5
132M		7,5
160M	11-15	11
160L	18,5	15
180M	22	18,5
180L		22
200L	30-37	30
225S	45	37
225M		45
250M	55	55
280S	75	75
280M	90	90

DISEGNO SCHEMATICO. DIMENSIONI IN MM CON TOLLERANZE SECONDO EN 735-1995. PESI INDICATIVI IN KG, RIFERITI A POMPE IN ESECUZIONE "GS" GHISA SFEROIDALE ESCLUSO MOTORE, NON IMPEGNATIVI. / Schematic drawing. Dimensions in mm with tolerances according to EN 735-1995 standards. Weights in Kgs, referred to pump in ductile iron "GS" construction without motor, not certified.

(1) DIMENSIONI IN FUNZIONE DELLA MARCA DEL MOTORE ELETTRICO INSTALLATO / Not certified dimensions according to installed motor manufacture

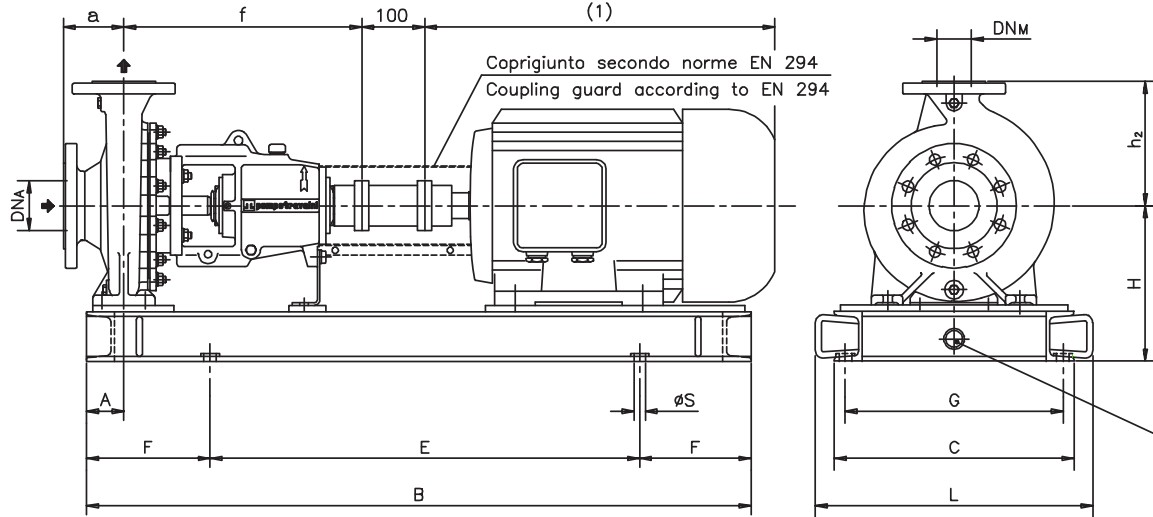
RIF. - Ref.: E.Z./C.T.

SOSTITUISCE - Replaces: 3700.1L5.2001.06.02

DATA - Date: NOVEMBRE 2011 - November 2011

N°.: 3700.1L5.2001.07.02

Versione **ACCOPIATA (BASE - GIUNTO SPAZIATORE)**
COUPLED construction (BASEPLATE - SPACER COUPLING)



ø1/2" Gas drenaggio basamento (optional)
 ø1/2" Gas baseplate drain (optional)

Pompa tipo Pump type	DIMENSIONI Dimensions						MOTORE ELETTRICO Electric Motor																	
							80M			90S/90L			100L			112M			132S/132M			160M/160L		
							DN _A	DN _M	a	f	h ₂	A	N°	H	Peso Weight	N°	H	Peso Weight	N°	H	Peso Weight	N°	H	Peso Weight
25-125	40	25	80	385	140	60	C01	202	67	C01	202	66,5	C03	202	80,5	C03	202	77	C03	222	82			
25-160	40	25	80	385	160	60	C01	222	71	C01	222	70,5	C03	222	84	C03	222	83,5	C03	222	83			
25-200	40	25	80	385	180	60	C01	250	75	C03	250	87,5	C03	250	88	C03	250	87,5	C03	250	87			
32-125	50	32	80	385	140	60	C01	202	70	C01	202	69,5	C03	202	81,5	C03	202	80	C03	222	85			
32-160	50	32	80	385	160	60	C01	222	73	C01	222	72,5	C03	222	86	C03	222	85,5	C03	222	85			
32-200	50	32	80	385	180	60	C01	250	77,5	C01	250	79	C03	250	91	C03	250	92	C03	250	95	C05	250 97	
32-250	50	32	100	500	225	75				C03	270	129	C03	270	129	C03	270	130	C05	270	135	C05	270 134	
40-125	65	40	80	385	140	60	C01	202	71	C01	202	70,5	C03	202	82,5	C03	202	81	C03	222	86	C05	250 92	
40-160	65	40	80	385	160	60	C01	222	75	C01	222	74,5	C03	222	88	C03	222	87,5	C03	222	89	C05	250 98	
40-200	65	40	100	385	180	60	C01	250	80	C01	250	81	C03	250	94	C03	250	94	C03	250	97	C05	250 99	
40-250	65	40	100	500	225	75				C03	270	131	C03	270	131	C03	270	132	C05	270	138	C11	310 175	
40-315	65	40	125	500	250	75				C03	290	135	C03	290	135	C03	290	134	C05	290	142	C11	330 179	
50-125	80	50	100	385	160	60	C01	222	75	C01	222	74,5	C03	222	88	C03	222	87,5	C03	222	89	C05	250 98	
50-160	80	50	100	385	180	60	C01	250	79	C01	250	80	C03	250	93	C03	250	93	C03	250	96	C05	250 98	
50-200	80	50	100	385	200	60	C01	250	81	C01	250	82	C03	250	95	C03	250	95	C03	250	98	C05	250 100	
50-250	80	50	125	500	225	75				C03	270	133	C03	270	133	C03	270	135	C05	270	141	C11	310 180	
50-315	80	50	125	500	280	75				C03	315	134	C03	315	133	C03	315	133	C05	315	138	C11	355 179	
65-125	100	65	100	385	180	75	C01	250	105	C03	250	117	C03	250	117	C03	250	114	C03	250	129	C05	250 135	
65-160	100	65	100	500	200	75				C03	250	122	C03	250	123	C03	250	123	C05	250	130	C11	290 161	
65-200	100	65	100	500	225	75				C03	270	137	C03	270	138	C03	270	138	C05	270	144	C11	310 183	
65-250	100	65	125	500	250	90				C05	290	141	C05	290	141	C05	290	141	C05	290	142	C11	330 182	
80-160	125	80	125	500	225	75				C03	270	131	C03	270	127	C03	270	127	C05	270	130	C11	310 174	
80-200	125	80	125	500	250	75				C03	270	143	C03	270	142	C03	270	142	C05	270	148	C11	310 189	
80-250	125	80	125	500	280	90													C05	315	165	C11	355 203	
100-200	125	100	125	500	280	90				C05	290	167	C05	290	166	C05	290	166	C05	290	166	C11	330 204	

DISEGNO SCHEMATICO. DIMENSIONI IN MM CON TOLLERANZE SECONDO EN 735-1995. PESI INDICATIVI IN KG, RIFERITI A POMPE IN ESECUZIONE "GS" GHISA SFEROIDALE ESCLUSO MOTORE, NON IMPEGNATIVI. / Schematic drawing. Dimensions in mm with tolerances according to EN 735-1995 standards. Weights in Kgs, referred to pump in ductile iron "GS" construction without motor, not certified.

(1) DIMENSIONI IN FUNZIONE DELLA MARCA DEL MOTORE ELETTRICO INSTALLATO / Not certified dimensions according to installed motor manufacture

RIF. - Ref.: E.Z./C.T.

SOSTITUISCE - Replaces: 3700.1L5.2001.06.01

DATA - Date: NOVEMBRE 2011 - November 2011

N°.: 3700.1L5.2001.07.01

DIMENSIONI D'INGOMBRO
 Overall dimensions
 POMPE CENTRIFUGHE MONOSTADIO
 Monostage centrifugal pumps
 SERIE **TCH & TCA gr. 1-2** pag.1/2
 Series

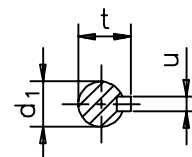
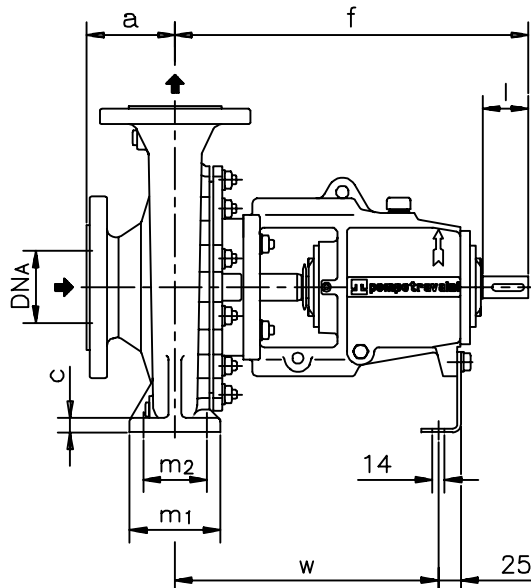
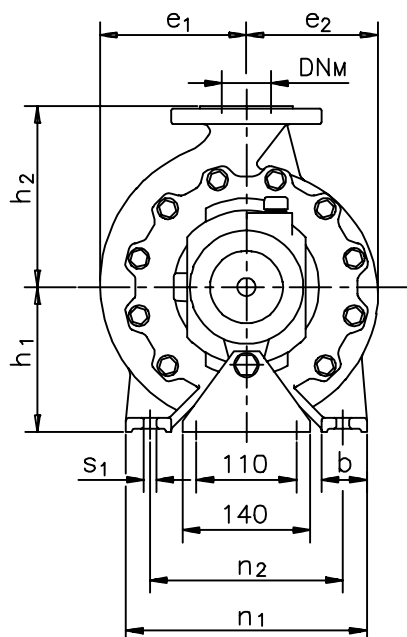


TRAVAINI PUMPS USA
 Liquid Ring & Rotary Vane Vacuum Pumps and Systems

200 Newsome Drive
 Yorktown, VA 23693
 1-800-535-4243
 www.Travaini.com

Versione ad **ASSE NUDO**
 Unificate secondo ISO 2858

BARESHAF construction
 According to ISO 2858 standards

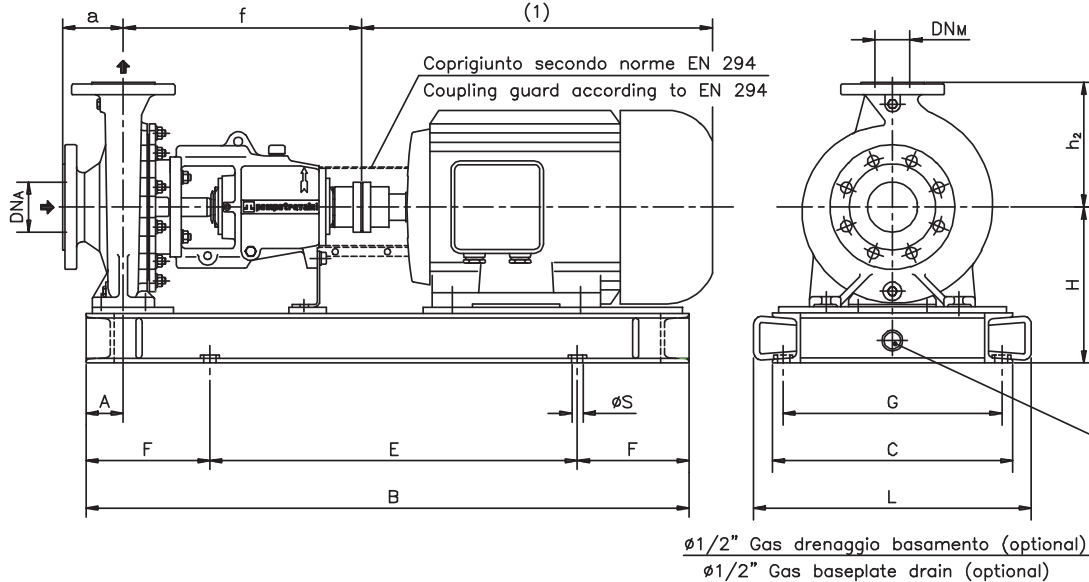


Pompa tipo Pump type	Versione ad ASSE NUDO BARESHAF construction																				Peso Weight
	DN _A	DN _M	a	f	h ₁	h ₂	b	c	m ₁	m ₂	n ₁	n ₂	s ₁	w	d ₁	l	t	u	e ₁	e ₂	
25-125	40	25	80	385	112	140	50	15	100	70	190	140	14	285	24	50	27	8	95	90	32
25-160	40	25	80	385	132	160	50	16	100	70	240	190	14	285	24	50	27	8	110	108	36
25-200	40	25	80	385	160	180	50	16	100	70	240	190	14	285	24	50	27	8	133	128	40
32-125	50	32	80	385	112	140	50	15	100	70	190	140	14	285	24	50	27	8	105	91	35
32-160	50	32	80	385	132	160	50	16	100	70	240	190	14	285	24	50	27	8	125	110	38
32-200	50	32	80	385	160	180	50	16	100	70	240	190	14	285	24	50	27	8	140	130	44
32-250	50	32	100	500	180	225	65	18	125	95	320	250	14	370	32	80	35	10	166	162	80
40-125	65	40	80	385	112	140	50	15	100	70	210	160	14	285	24	50	27	8	115	100	36
40-160	65	40	80	385	132	160	50	16	100	70	240	190	14	285	24	50	27	8	130	115	40
40-200	65	40	100	385	160	180	50	16	100	70	265	212	14	285	24	50	27	8	146	135	46
40-250	65	40	100	500	180	225	65	18	125	95	320	250	14	370	32	80	35	10	176	163	82
40-315	65	40	125	500	200	250	65	18	125	95	345	280	14	370	32	80	35	10	205	200	86
50-125	80	50	100	385	132	160	50	16	100	70	240	190	14	285	24	50	27	8	130	110	40
50-160	80	50	100	385	160	180	50	16	100	70	265	212	14	285	24	50	27	8	147	125	45
50-200	80	50	100	385	160	200	50	16	100	70	265	212	14	285	24	50	27	8	161	146	47
50-250	80	50	125	500	180	225	65	18	125	95	320	250	14	370	32	80	35	10	183	169	85
50-315	80	50	125	500	225	280	65	18	125	95	345	280	14	370	32	80	35	10	210	197	82
65-125	100	65	100	385	160	180	65	16	125	95	280	212	14	285	24	50	27	8	145	117	70
65-160	100	65	100	500	160	200	65	16	125	95	280	212	14	370	32	80	35	10	160	130	73
65-200	100	65	100	500	180	225	65	18	125	95	320	250	14	370	32	80	35	10	174	152	80
65-250	100	65	125	500	200	250	80	20	160	120	360	280	18	370	32	80	35	10	195	175	85
65-400	100	65	125	500	250	300	100	22	160	120	500	400	22	370	32	80	35	10	250	235	130
80-160	125	80	125	500	180	225	65	16	125	95	320	250	14	370	32	80	35	10	186	142	78
80-200	125	80	125	500	180	250	65	18	125	95	345	280	14	370	32	80	35	10	188	158	93
80-250	125	80	125	500	225	280	80	20	160	120	400	315	18	370	32	80	35	10	225	185	108
100-200	125	100	125	500	200	280	80	20	160	120	360	280	18	370	32	80	35	10	211	170	99

Disegno schematico. Dimensioni in mm con tolleranze secondo EN 735-1995. Pesi indicativi in Kg, riferiti a pompe in esecuzione "GS" ghisa sferoidale escluso motore, non impegnativi.
 Schematic drawing. Dimensions in mm with tolerances to EN 735-1995 standards. Weights in Kgs, referred to pump in ductile iron "GS" construction without motor, not certified.

RIF. - Ref.:	F.P./C.T.	SOSTITUISCE - Replaces:	3700.100.201.02.A
DATA - Date:	NOVEMBRE 2006 - November 2006	N°.:	3700.100.201.03.A

Versione **ACCOPIATA (BASE - GIUNTO)**
COUPLED construction (BASEPLATE - COUPLING)



Pompa tipo Pump type	DIMENSIONI Dimensions						MOTORE ELETTRICO <i>Electric Motor</i>																		
							80M			90S/90L			100L			112M			132S/132M			160M/160L			
	DN _A	DN _M	a	f	h ₂	A	N°	H	Peso Weight	N°	H	Peso Weight	N°	H	Peso Weight	N°	H	Peso Weight	N°	H	Peso Weight	N°	H	Peso Weight	
25-125	40	25	80	385	140	60	C01	202	65	C01	202	64,5	C01	202	63,5	C01	202	62	C03	222	80				
25-160	40	25	80	385	160	60	C01	222	69	C01	222	68,5	C01	222	69	C01	222	68,5	C03	222	81				
25-200	40	25	80	385	180	60	C01	250	73	C01	250	72,5	C01	250	73	C01	250	70	C03	250	85				
32-125	50	32	80	385	140	60	C01	202	68	C01	202	67,5	C01	202	66,5	C01	202	65	C03	222	83				
32-160	50	32	80	385	160	60	C01	222	71	C01	222	70,5	C01	222	71	C01	222	70,5	C03	222	83				
32-200	50	32	80	385	180	60	C01	250	75,5	C01	250	77	C01	250	76	C01	250	77	C03	250	93	C03	250	89	
32-250	50	32	100	500	225	75				C03	270	127	C03	270	127	C03	270	128	C03	270	128	C05	270	132	
40-125	65	40	80	385	140	60	C01	202	69	C01	202	68,5	C01	202	67,5	C01	202	66	C03	222	84	C03	250	84	
40-160	65	40	80	385	160	60	C01	222	73	C01	222	72,5	C01	222	73	C01	222	72,5	C03	222	87	C03	250	90	
40-200	65	40	100	385	180	60	C01	250	78	C01	250	79	C01	250	79	C01	250	79	C03	250	95	C03	250	91	
40-250	65	40	100	500	225	75				C03	270	129	C03	270	129	C03	270	130	C03	270	130	C05	270	134	
40-315	65	40	125	500	250	75				C03	290	133	C03	290	133	C03	290	134	C03	290	134	C05	290	138	
50-125	80	50	100	385	160	60	C01	222	73	C01	222	72,5	C01	222	73	C01	222	72,5	C03	222	87	C03	250	90	
50-160	80	50	100	385	180	60	C01	250	77	C01	250	78	C01	250	78	C01	250	78	C03	250	94	C03	250	90	
50-200	80	50	100	385	200	60	C01	250	79	C01	250	80	C01	250	80	C01	250	80	C03	250	96	C03	250	92	
50-250	80	50	125	500	225	75							C03	270	131	C03	270	133	C03	270	133	C05	270	139	
50-315	80	50	125	500	280	75							C03	315	132	C03	315	131	C03	315	130	C05	315	138	
65-125	100	65	100	385	180	75	C03	250	117	C03	250	117	C03	250	117	C03	250	118	C03	250	115	C03	250	115	
65-160	100	65	100	500	200	75				C03	250	120	C03	250	121	C03	250	121	C03	250	122	C05	250	121	
65-200	100	65	100	500	225	75							C03	270	135	C03	270	136	C03	270	136	C05	270	142	
65-250	100	65	125	500	250	90							C05	290	139	C05	290	139	C05	290	140	C05	290	141	
80-160	125	80	125	500	225	75							C03	270	129	C03	270	125	C03	270	122	C05	270	133	
80-200	125	80	125	500	250	75							C03	270	141	C03	270	140	C03	270	140	C05	270	148	
80-250	125	80	125	500	280	90												C05	315	163	C05	315	162		
100-200	125	100	125	500	280	90							C05	290	165	C05	290	164	C05	290	164	C05	290	163	

DISEGNO SCHEMATICO. DIMENSIONI IN MM CON TOLLERANZE SECONDO EN 735-1995. PESI INDICATIVI IN KG, RIFERITI A POMPE IN ESECUZIONE "GS" GHISA SFEROIDALE ESCLUSO MOTORE, NON IMPEGNATIVI.

Schematic drawing. Dimensions in mm with tolerances to EN 735-1995 standards. Weights in Kgs, referred to pump in ductile iron "GS" construction without motor, not certified.

(1) DIMENSIONI IN FUNZIONE DELLA MARCA DEL MOTORE ELETTRICO INSTALLATO / Not certified dimensions according to installed motor manufacture

RIF. - Ref.: E.Z./C.T.

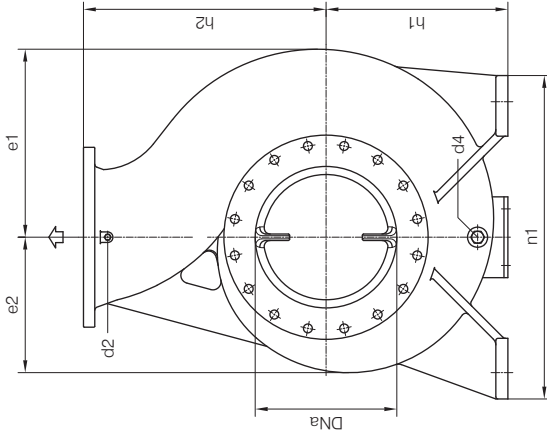
SOSTITUISCE - Replaces: 3700.1L3.2001.07.01

DATA - Date: NOVEMBRE 2011 - November 2011

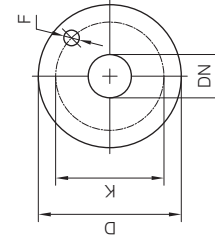
N°.: 3700.1L3.2001.08.01



BARESHAF construction

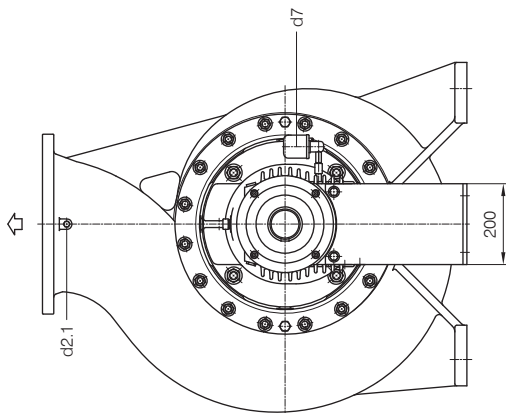
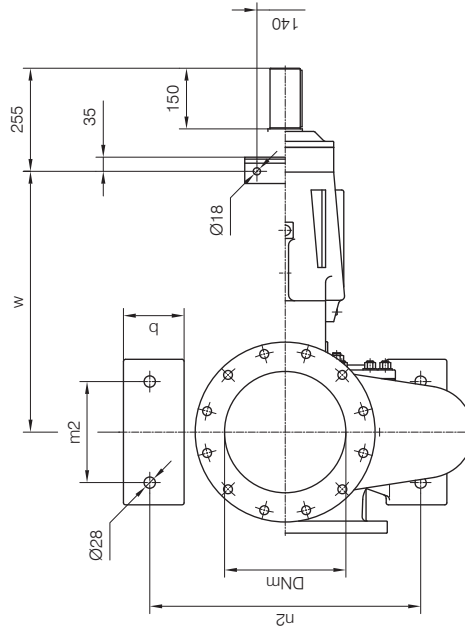
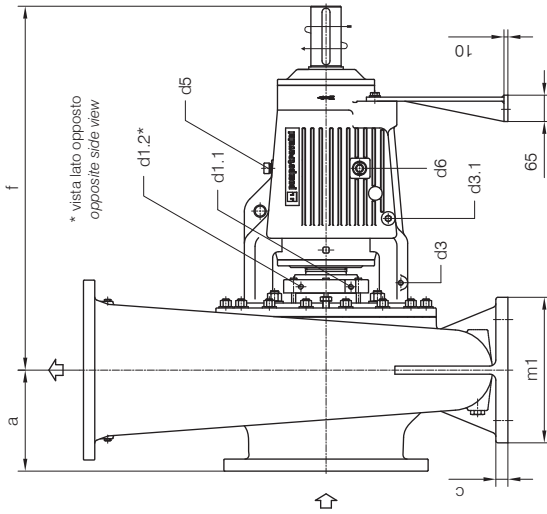


Dimensioni flange Flanges dimensions		N° fori holes	
DNa-DNm	D	K	F
250	395	350	22
300	445	400	22
350	505	460	22

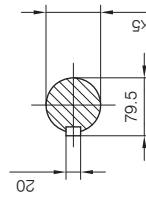


FLANGE: Dimensioni secondo UNI 2223 PN10
 FLANGES: Dimensions according to UNI 2223 NP10

Versione ad **ASSE NUDO**



Dimensioni comando albero
 Shaft drive-end dimensions



Attacchi filettati GAS
 GAS threaded connections

d1.1	d1.2	d2	d2.1	d3	d3.1	d4
G 1/4	G 1/4	G 1/4	G 1/4	G 1/4	G 1/4	G 3/4

Disegno schematico. Dimensioni in mm con tolleranze secondo EN 735-1995.
 Pesì indicativi in Kg, riferiti a pompe in ghisa escluso motore, non impegnativi.
 Schematic drawing. Dimensions in mm with tolerances according to EN 735-1995 standards.
 Weights in Kgs, referred to pumps in cast iron without motor, not binding.



Pompe serie *Pumps series* **TCH /1 gr.5**

POMPA TIPO <i>Pump type</i>	Dimensioni costruttive <i>Construction dimensions</i>																
	gr.	DNa	DNm	a	f	h1	h2	b	c	m1	m2	n1	n2	w	e1	e2	Peso <i>Weight</i>
250-450	5	300	250	220	900	400	560	130	28	260	190	690	560	645	444	356	580
300-350	5	350	300	280	900	480	650	150	30	360	250	900	770	645	534	388	630
300-450	5	350	300	250	900	450	600	150	30	360	250	800	670	645	465	335	600

Pompe serie *Pumps series* **TCN /1 gr.5**

POMPA TIPO <i>Pump type</i>	Dimensioni costruttive <i>Construction dimensions</i>																
	gr.	DNa	DNm	a	f	h1	h2	b	c	m1	m2	n1	n2	w	e1	e2	Peso <i>Weight</i>
250-450	5	300	250	300	900	400	560	130	28	260	190	690	560	645	444	356	615
300-550	5	350	300	350	900	480	750	150	32	360	250	900	750	645	530	425	780

- | | | | |
|------|---|----|--|
| d1.1 | Connessione filettata G 1/4 - per entrata liquido di flussaggio della tenuta meccanica dall'esterno
<i>G 1/4 threaded connection - for mechanical seal flushing inlet from outside</i> | d4 | Attacco tappato G 3/4 - per scarico corpo pompa
<i>G 3/4 plugged connection - for pump casing drain</i> |
| d1.2 | Connessione filettata G 1/4 - per uscita liquido di flussaggio della tenuta meccanica
<i>G 1/4 threaded connection - for mechanical seal flushing outlet</i> | d5 | Tappo per carico olio dei cuscinetti nel supporto
<i>Plug for bearings oil filling into housing</i> |
| d2 | Attacco tappato G 1/4 - per manometro
<i>G 1/4 plugged connection - for manometer</i> | d6 | Indicatore di livello G 3/4
<i>Sight gauge G 3/4</i> |
| d2.1 | Attacco tappato G 1/4 - per PLAN 11
<i>G 1/4 plugged connection - for PLAN 11</i> | d7 | Oliatore a livello costante
<i>Constant level oil</i> |
| d3 | Attacco tappato G 1/4 - per scarico olio dei cuscinetti dal supporto
<i>G 1/4 plugged connection - for bearings oil drain from housing</i> | | |
| d3.1 | Connessione filettata G 1/4 - per recupero perdite
<i>G 1/4 threaded connection - for leakages recovery</i> | | |

DIMENSIONE DI INGOMBRO / Overall dimensions
 POMPE CENTRIFUGHE AUTODESCANTI
 Self-priming centrifugal pumps
 SERIE / Series
TCH TCN / 1 gr.5

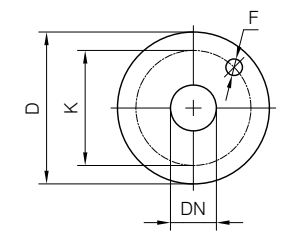
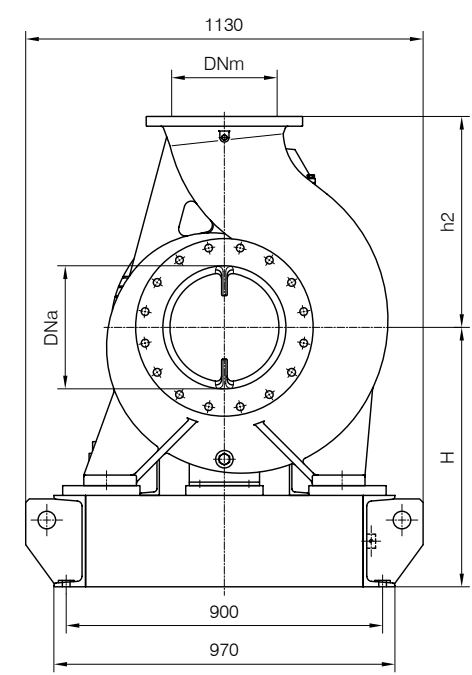
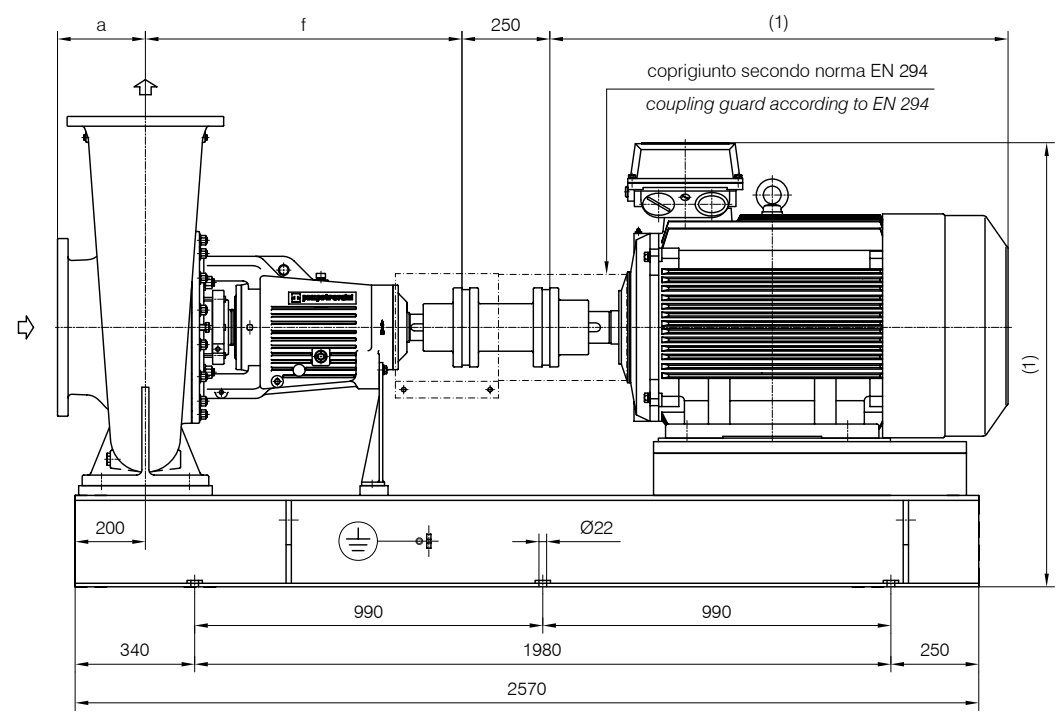


TRAVALINI PUMPS USA
 Liquid Ring & Rotary Vane Vacuum Pumps and Systems

200 Newsome Drive
 Yorktown, VA 23693
 1-800-535-4243
 www.Travaini.com

Versione **ACCOPPIATA (BASE-GIUNTO SPAZIATORE)**

COUPLED construction (BASEPLATE-SPACER COUPLING)



FLANGE: Dimensioni secondo UNI 2223 PN10
 FLANGES: Dimensions according to UNI 2223 NP10

Dimensioni flange Flanges dimensions				
DNa-DNm	D	K	F	N° fori holes
250	395	350	22	12
300	445	400	22	12
350	505	460	22	16

Grandezza Frame size IEC	MOTORI ELETTRICI Electric Motors			
	Giri/min. RPM 740 50Hz		Giri/min. RPM 980 50Hz	
	kW	HP	kW	HP
280 M	45	60	55	75
315 S	55	75	75	100
315 M	75	100	90	125
315 L	90	125	110	150
315 L	110	150	132	175
355 L	132	175	160	215
355 L	160	215	200	270
355 L	200	270	250	335

Grandezza IEC in funzione della marca del motore installato.
 Frame size IEC depend on installed motor manufactured.

(1) Dimensioni in funzione della marca del motore installato.
 (1) Dimensions depend on installed motor manufacturer.

POMPA TIPO Pump type	Dimensioni costruttive Construction dimensions						Basamento tipo Baseplate type	Peso Weight
	DNa	DNm	a	f	H	h2		
TCH 250-450	300	250	220	900	688	560	356 F	1270
TCH 300-350	350	300	280	900	768	650	356 F	1320
TCH 300-450	350	300	250	900	738	600	356 F	1290
TCN 250-450	300	250	300	900	688	560	356 F	1305
TCN 300-550	350	300	350	900	768	750	356 F	1470

Disegno schematico. Dimensioni in mm con tolleranze secondo EN 735-1995.
 Pesì indicativi in Kg, riferiti a pompe in ghisa escluso motore, non impegnativi.
 Schematic drawing. Dimensions in mm with tolerances according to EN 735-1995 standards.
 Weights in Kgs, referred to pumps in cast iron without motor, not binding.

RIF. - Ref.: S.V./C.I.T.
 DATA - Date: Luglio '09 July '09

SOSTITUISCE - Replaces: 3603-3705, 115.2201.01
 N°: 3603-3705, 115.2201.02

DIMENSIONE DI INGOMBRO / Overall dimensions
 POMPE CENTRIFUGHE AUTOADESCANTI
 Self-priming centrifugal pumps
 SERIE / Series
TCH TCN / 1 gr.5

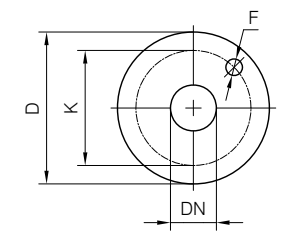
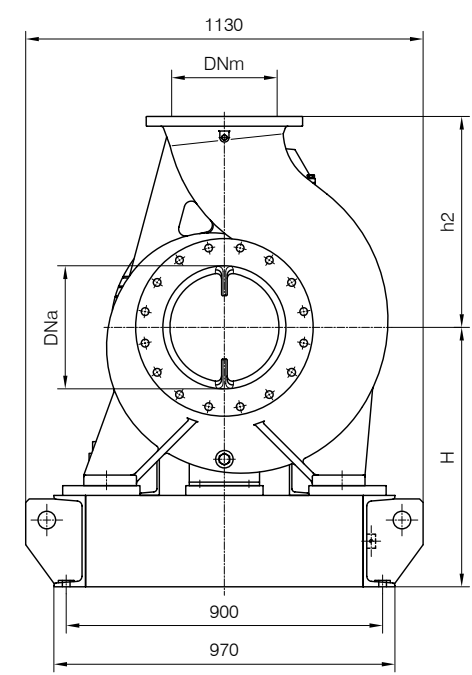
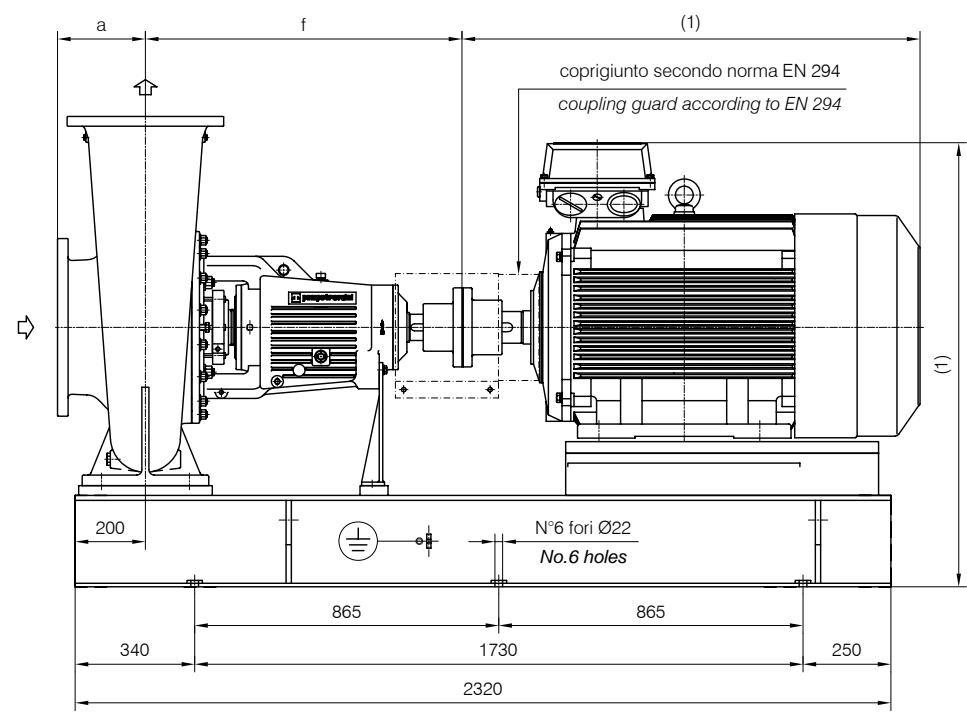


TRAVAINI
PUMPS USA
 Liquid Ring & Rotary Vane Vacuum Pumps and Systems

200 Newsome Drive
 Yorktown, VA 23693
 1-800-535-4243
 www.Travaini.com

Versione **ACCOPPIATA (BASE-GIUNTO)**

COUPLED construction (BASEPLATE-COUPLING)



FLANGE: Dimensioni secondo UNI 2223 PN10
 FLANGES: Dimensions according to UNI 2223 NP10

Dimensioni flange Flanges dimensions				
DNa-DNm	D	K	F	N° fori holes
250	395	350	22	12
300	445	400	22	12
350	505	460	22	16

Grandezza Frame size IEC	MOTORI ELETTRICI Electric Motors			
	Giri/min. RPM 740 50Hz		Giri/min. RPM 980 50Hz	
	kW	HP	kW	HP
280 M	45	60	55	75
315 S	55	75	75	100
315 M	75	100	90	125
315 L	90	125	110	150
315 L	110	150	132	175
355 L	132	175	160	215
355 L	160	215	200	270
355 L	200	270	250	335

Grandezza IEC in funzione della marca del motore installato.
 Frame size IEC depend on installed motor manufactured.

(1) Dimensioni in funzione della marca del motore installato.
 (1) Dimensions depend on installed motor manufacturer.

POMPA TIPO Pump type	Dimensioni costruttive Construction dimensions						Basamento tipo Baseplate type	Peso Weight
	DNa	DNm	a	f	H	h2		
TCH 250-450	300	250	220	900	688	560	359 F	1230
TCH 300-350	350	300	280	900	768	650	359 F	1280
TCH 300-450	350	300	250	900	738	600	359 F	1250
TCN 250-450	300	250	300	900	688	560	359 F	1265
TCN 300-550	350	300	350	900	768	750	359 F	1430

Disegno schematico. Dimensioni in mm con tolleranze secondo EN 735-1995.
 Pesi indicativi in Kg, riferiti a pompe in ghisa escluso motore, non impegnativi.
 Schematic drawing. Dimensions in mm with tolerances according to EN 735-1995 standards.
 Weights in Kgs, referred to pumps in cast iron without motor, not binding.

RIF. - Ref.: S.V./C.T.
 DATA - Date: Luglio '09 July '09

SOSTITUISCe - Replaces: 3603-3705-1L3.2201.01
 N°.: 3603-3705-1L3.2201.02