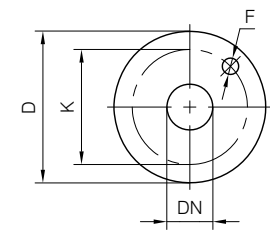
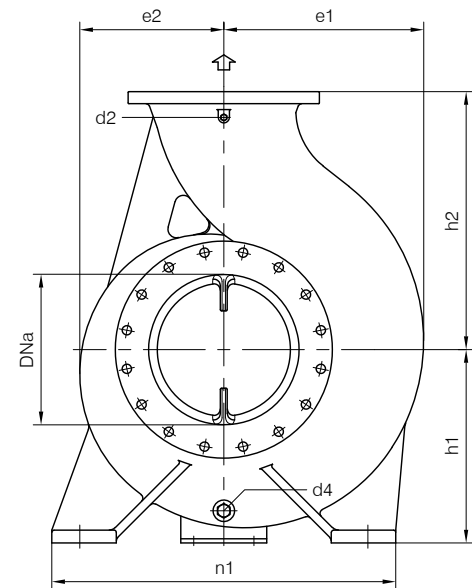




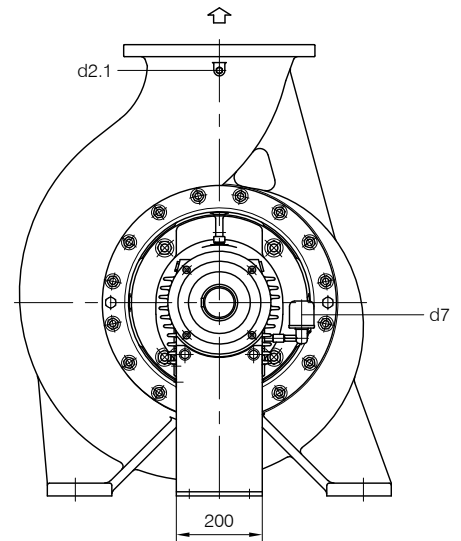
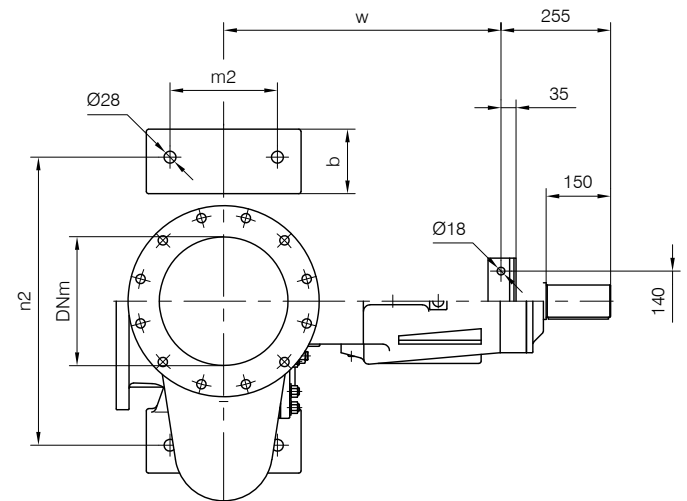
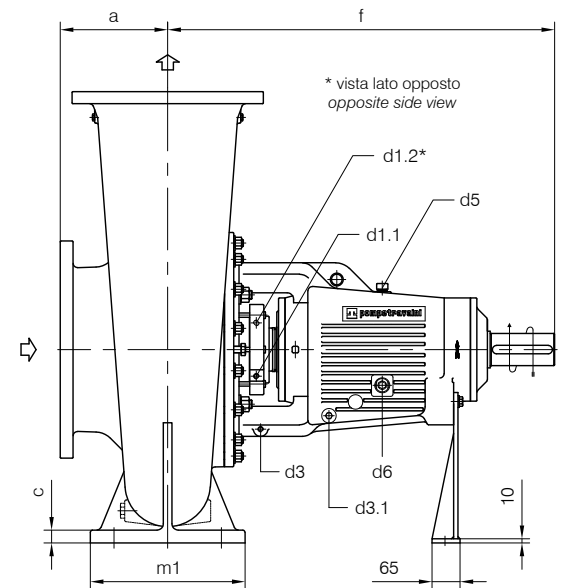
**BARESHAF** construction



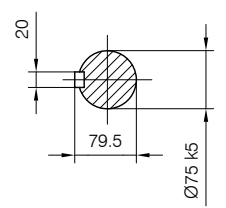
FLANGE: Dimensioni secondo UNI 2223 PN10  
 FLANGES: Dimensions according to UNI 2223 NP10

Dimensioni flange Flanges dimensions				
DNa-DNm	D	K	F	N° fori holes
250	395	350	22	12
300	445	400	22	12
350	505	460	22	16

Versione ad **ASSE NUDO**



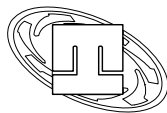
Dimensioni comando albero  
 Shaft drive-end dimensions



Attacchi filettati GAS  
 GAS threaded connections

d1.1	d1.2	d2	d2.1	d3	d3.1	d4
G 1/4	G 1/4	G 1/4	G 1/4	G 1/4	G 1/4	G 3/4

Connessioni filettate secondo UNI EN ISO 228-1. Disegno schematico. Dimensioni in mm con tolleranze secondo EN 735-1995. Pesì indicativi in Kg, riferiti a pompe in ghisa escluso motore, non impegnativi.  
 Threaded connection according to UNI EN ISO 228-1. Schematic drawing. Dimensions in mm with tolerances according to EN 735-1995 standards. Weights in Kgs, referred to pumps in cast iron without motor, not binding.



**Pompe serie Pumps series TCH / 1 gr.5**

POMPA TIPO <i>Pump type</i>	Dimensioni costruttive <i>Construction dimensions</i>																
	gr.	DNa	DNm	a	f	h1	h2	b	c	m1	m2	n1	n2	w	e1	e2	Peso <i>Weight</i>
250-450 (A3)	5	300	250	220	900	400	560	130	28	260	190	690	560	645	444	356	580
250-450 (GH)	5	300	250	225	900	410	560	130	28	270	190	700	560	645	446	358	602
300-350	5	350	300	280	900	480	650	150	30	360	250	900	770	645	534	388	630
300-450	5	350	300	250	900	450	600	150	30	360	250	800	670	645	465	335	600

**Pompe serie Pumps series TCN / 1 gr.5**

POMPA TIPO <i>Pump type</i>	Dimensioni costruttive <i>Construction dimensions</i>																
	gr.	DNa	DNm	a	f	h1	h2	b	c	m1	m2	n1	n2	w	e1	e2	Peso <i>Weight</i>
250-450 (A3)	5	300	250	300	900	400	560	130	28	260	190	690	560	645	444	356	615
250-450 (GH)	5	300	250	300	900	410	560	130	28	270	190	700	560	645	446	358	637
300-550	5	350	300	350	900	480	750	150	32	360	250	900	750	645	530	425	780

d1.1 Connessione filettata G 1/4 - per entrata liquido di flussaggio della tenuta meccanica dall'esterno  
*G 1/4 threaded connection - for mechanical seal flushing inlet from outside*

d1.2 Connessione filettata G 1/4 - per uscita liquido di flussaggio della tenuta meccanica  
*G 1/4 threaded connection - for mechanical seal flushing outlet*

d2 Attacco tappato G 1/4 - per manometro  
*G 1/4 plugged connection - for manometer*

d2.1 Attacco tappato G 1/4 - per PLAN 11  
*G 1/4 plugged connection - for PLAN 11*

d3 Attacco tappato G 1/4 - per scarico olio dei cuscinetti dal supporto  
*G 1/4 plugged connection - for bearings oil drain from housing*

d3.1 Connessione filettata G 1/4 - per recupero perdite  
*G 1/4 threaded connection - for leakages recovery*

d4 Attacco tappato G 3/4 - per scarico corpo pompa  
*G 3/4 plugged connection - for pump casing drain*

d5 Tappo per carico olio dei cuscinetti nel supporto  
*Plug for bearings oil filling into housing*

d6 Indicatore di livello G 3/4  
*Sight gauge G 3/4*

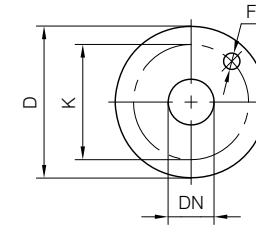
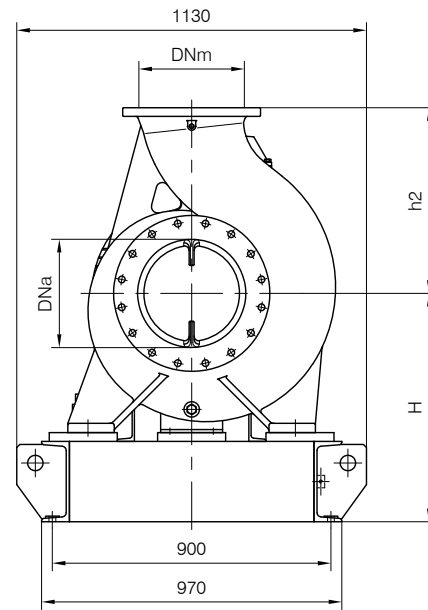
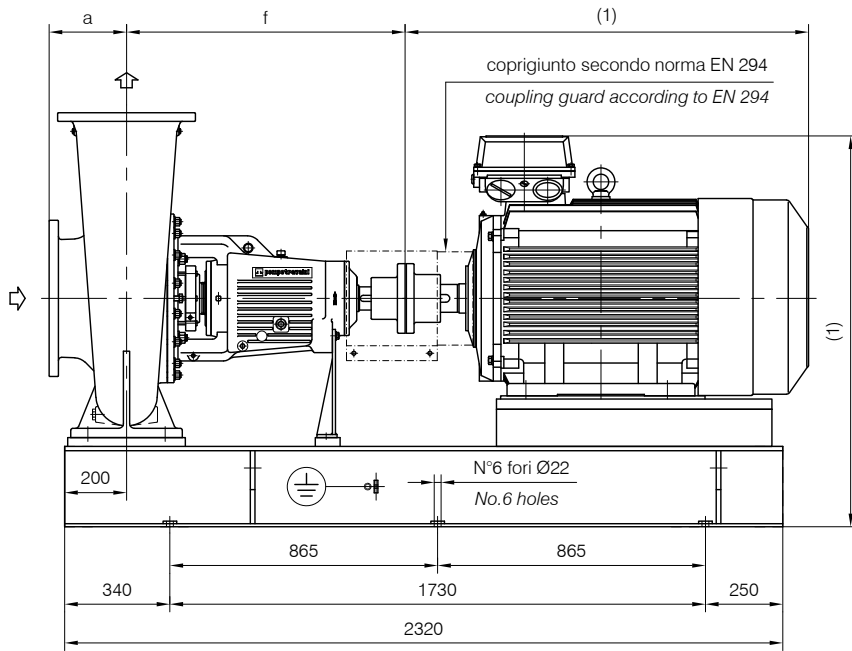
d7 Oliatore a livello costante  
*Constant level oil*

(A3) Pompa in acciaio inox e sue derivate  
*Stainless steel pumps and derivatives*

(GH) Pompa in ghisa e sue derivate  
*Cast iron pumps and derivatives*

Versione **ACCOPPIATA (BASE-GIUNTO)**

**COUPLED construction (BASEPLATE-COUPLING)**



FLANGE: Dimensioni secondo UNI 2223 PN10  
 FLANGES: Dimensions according to UNI 2223 NP10

Dimensioni flange Flanges dimensions				
DNa-DNm	D	K	F	N° fori holes
250	395	350	22	12
300	445	400	22	12
350	505	460	22	16

(2) Grandezza IEC in funzione della marca del motore installato.  
 Frame size IEC depend on installed motor manufactured.

(1) Dimensioni in funzione della marca del motore installato.  
 (1) Dimensions depend on installed motor manufacturer.

(A3) Pompa in acciaio inox e sue derivate (GH) Pompa in ghisa e sue derivate  
 Stainless steel pumps and derivatives Cast iron pumps and derivatives

POMPA TIPO Pump type	Dimensioni costruttive Construction dimensions							
	DNa	DNm	a	f	H	h2	Basamento tipo Baseplate type	Peso Weight
TCH 250-450 (A3)	300	250	220	900	688	560	359 F	1230
TCH 250-450 (GH)	300	250	225	900	698	560	359 F	1252
TCH 300-350	350	300	280	900	768	650	359 F	1280
TCH 300-450	350	300	250	900	738	600	359 F	1250
TCN 250-450 (A3)	300	250	300	900	688	560	359 F	1265
TCN 250-450 (GH)	300	250	300	900	698	560	359 F	1287
TCN 300-550	350	300	350	900	768	750	359 F	1430

MOTORI ELETTRICI installabili su Basamento tipo 359F Electric Motors assembling on Baseplate type 359F						
Grandezza Frame size IEC	Giri/min. RPM 740 50Hz		Giri/min. RPM 980 50Hz		Giri/min. RPM 1450 50Hz	
	kW	HP	kW	HP	kW	HP
280 S	-	-	-	-	75	100
280 M	45	60	55	75	90	125
315 S	55	75	75	100	110	150
315 M	75	100	90	125	132	180
315 L	90	125	110	150	160	215
315 L	110	150	132	180	200	270
355 (2)	132	180	160	215	250	335
355 (2)	160	215	200	270	315	422
355 (2)	200	270	250	335	355	476
355 (2)	-	-	-	-	400	536

Connessioni filettate secondo UNI EN ISO 228-1. Disegno schematico. Dimensioni in mm con tolleranze secondo EN 735-1995. Pesi indicativi in Kg, riferiti a pompe in ghisa escluso motore, non impegnativi.  
 Threaded connection according to UNI EN ISO 228-1. Schematic drawing. Dimensions in mm with tolerances according to EN 735-1995 standards. Weights in Kgs, referred to pumps in cast iron without motor, not binding.

DIMENSIONE DI INGOMBRO / Overall dimensions  
 POMPE CENTRIFUGHE MONOSTADIO  
 Monostage centrifugal pumps  
 SERIE / Series  
**TCH TCN / 1 gr.5**

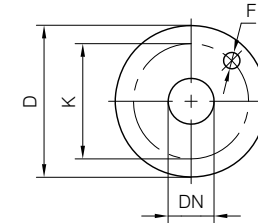
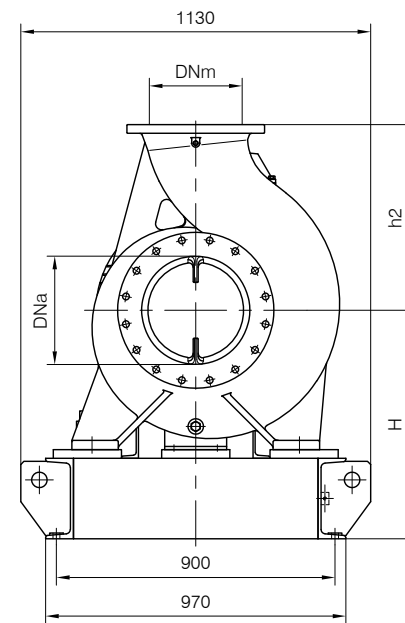
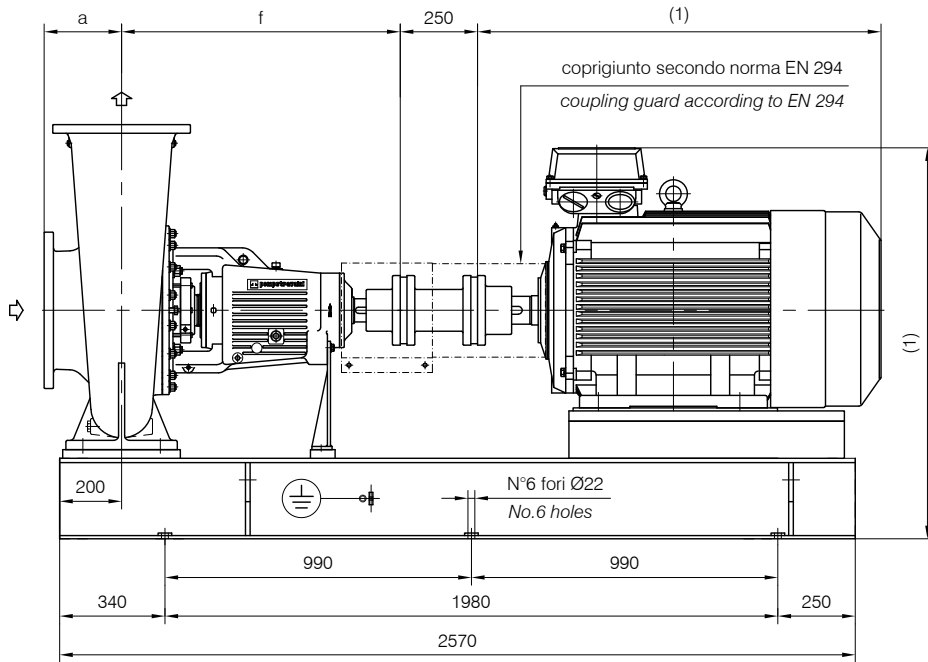


**pompetravaini** s.p.a.  
 CASTANO PRIMO (MILANO)

RIF. - Ref.: ST/1/C.T. DOCUMENTO N. - Document no.: 3603-3705.1L5.2201  
 DATA - Date: 11-2016 SOSTITUISCE DOC. - Replaces Doc. (ITEM): 3603-3705.1L5.2201.03 (000232R)  
 ITEM n° D00268R

Versione **ACCOPIATA (BASE-GIUNTO SPAZIATORE)**

**COUPLED construction (BASEPLATE-SPACER COUPLING)**



FLANGE: Dimensioni secondo UNI 2223 PN10  
 FLANGES: Dimensions according to UNI 2223 NP10

Dimensioni flange Flanges dimensions				
DNa-DNm	D	K	F	N° fori holes
250	395	350	22	12
300	445	400	22	12
350	505	460	22	16

(1) Dimensioni in funzione della marca del motore installato.  
 (1) Dimensions depend on installed motor manufacturer.

(2) Grandezza IEC in funzione della marca del motore installato.  
 Frame size IEC depend on installed motor manufactured.

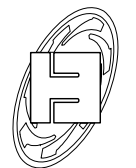
(A3) Pompa in acciaio inox e sue derivate  
 Stainless steel pumps and derivatives  
 (GH) Pompa in ghisa e sue derivate  
 Cast iron pumps and derivatives

POMPA TIPO Pump type	Dimensioni costruttive Construction dimensions							
	DNa	DNm	a	f	H	h2	Basamento tipo Baseplate type	Peso Weight
TCH 250-450 (A3)	300	250	220	900	688	560	356 F	1270
TCH 250-450 (GH)	300	250	225	900	698	560	356 F	1292
TCH 300-350	350	300	280	900	768	650	356 F	1320
TCH 300-450	350	300	250	900	738	600	356 F	1290
TCN 250-450 (A3)	300	250	300	900	688	560	356 F	1305
TCN 250-450 (GH)	300	250	300	900	698	560	356 F	1327
TCN 300-550	350	300	350	900	768	750	356 F	1470

MOTORI ELETTRICI installabili su Basamento tipo 356F Electric Motors assembling on Baseplate type 356F						
Grandezza Frame size IEC	Giri/min. RPM 740 50Hz		Giri/min. RPM 980 50Hz		Giri/min. RPM 1480 50Hz	
	kW	HP	kW	HP	kW	HP
280 M	45	60	55	75	90	125
315 S	55	75	75	100	110	150
315 M	75	100	90	125	132	175
315 L	90	125	110	150	160	215
315 L	110	150	132	175	200	270
355 (2)	132	175	160	215	250	335
355 (2)	160	215	200	270	315	422
355 (2)	200	270	250	335	355	476
355 (2)	-	-	-	-	400	536

Connessioni filettate secondo UNI EN ISO 228-1. Disegno schematico. Dimensioni in mm con tolleranze secondo EN 735-1995. Pesi indicativi in Kg, riferiti a pompe in ghisa escluso motore, non impegnativi.  
 Threaded connection according to UNI EN ISO 228-1. Schematic drawing. Dimensions in mm with tolerances according to EN 735-1995 standards. Weights in Kgs, referred to pumps in cast iron without motor, not binding.

DIMENSIONE DI INGOMBRO / Overall dimensions  
 POMPE CENTRIFUGHE MONOSTADIO  
 Monostage centrifugal pumps  
 SERIE / Series  
**TCH TCN / 1 gr.5**



**pompaetravaini** s.p.a.  
 CASTANO PRIMO (MILANO)