

DIMENSIONI D'INGOMBRO

Overall dimensions

POMPE CENTRIFUGHE MONOSTADIO

Monostage centrifugal pumps

SERIE

Series **TCK gr. 1-2** pag.1/2



TRAVAINI PUMPS USA

Liquid Ring & Rotary Vane Vacuum Pumps and Systems

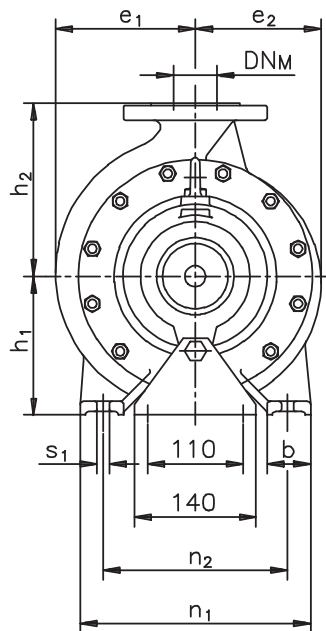
200 Newsome Drive

Yorktown, VA 23693

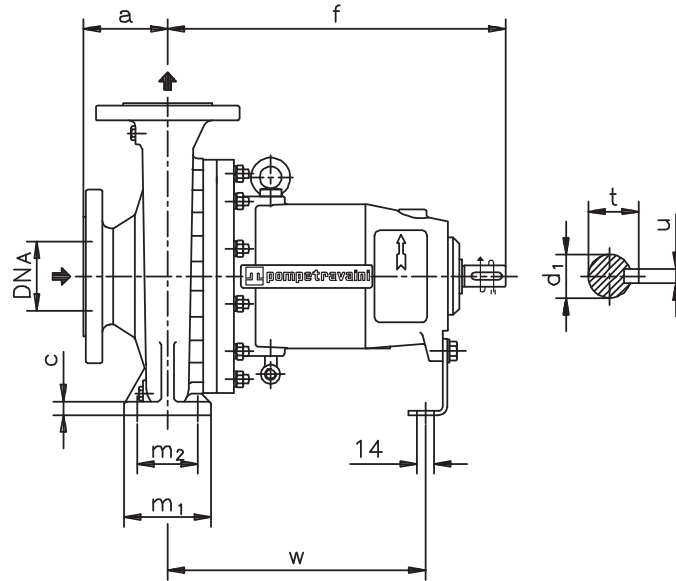
1-800-535-4243

www.Travaini.com

Versione ad **ASSE NUDO**
Unificate secondo ISO 2858



BARESHAF construction
According to ISO 2858 standards



| Pompa tipo Pump type | Versione ad ASSE NUDO | | | | | | | | | | | | | | | | | | | Peso Weight | |
|-------------------------|------------------------------|-----------------|-----|-----|----------------|----------------|----|----|----------------|----------------|----------------|----------------|----------------|-----|----------------|----|----|----|----------------|----------------|-----|
| | BARESHAF construction | | | | | | | | | | | | | | | | | | | | |
| | DN _A | DN _M | a | f | h ₁ | h ₂ | b | c | m ₁ | m ₂ | n ₁ | n ₂ | s ₁ | w | d ₁ | l | t | u | e ₁ | e ₂ | |
| 25-125 | 40 | 25 | 80 | 385 | 112 | 140 | 50 | 15 | 100 | 70 | 190 | 140 | 14 | 285 | 24 | 50 | 27 | 8 | 95 | 90 | 58 |
| 25-160 | 40 | 25 | 80 | 385 | 132 | 160 | 50 | 16 | 100 | 70 | 240 | 190 | 14 | 285 | 24 | 50 | 27 | 8 | 110 | 108 | 64 |
| 32-125 | 50 | 32 | 80 | 385 | 112 | 140 | 50 | 15 | 100 | 70 | 190 | 140 | 14 | 285 | 24 | 50 | 27 | 8 | 105 | 91 | 59 |
| 32-160 | 50 | 32 | 80 | 385 | 132 | 160 | 50 | 16 | 100 | 70 | 240 | 190 | 14 | 285 | 24 | 50 | 27 | 8 | 125 | 110 | 66 |
| 32-200 | 50 | 32 | 80 | 385 | 160 | 180 | 50 | 16 | 100 | 70 | 240 | 190 | 14 | 285 | 24 | 50 | 27 | 8 | 140 | 130 | 74 |
| 32-250 | 50 | 32 | 100 | 500 | 180 | 225 | 65 | 18 | 125 | 95 | 320 | 250 | 14 | 370 | 32 | 80 | 35 | 10 | 166 | 162 | 116 |
| 40-125 | 65 | 40 | 80 | 385 | 112 | 140 | 50 | 15 | 100 | 70 | 210 | 160 | 14 | 285 | 24 | 50 | 27 | 8 | 115 | 100 | 61 |
| 40-160 | 65 | 40 | 80 | 385 | 132 | 160 | 50 | 16 | 100 | 70 | 240 | 190 | 14 | 285 | 24 | 50 | 27 | 8 | 130 | 115 | 68 |
| 40-200 | 65 | 40 | 100 | 385 | 160 | 180 | 50 | 16 | 100 | 70 | 265 | 212 | 14 | 285 | 24 | 50 | 27 | 8 | 146 | 135 | 77 |
| 40-250 | 65 | 40 | 100 | 500 | 180 | 225 | 65 | 18 | 125 | 95 | 320 | 250 | 14 | 370 | 32 | 80 | 35 | 10 | 176 | 163 | 117 |
| 40-315 | 65 | 40 | 125 | 500 | 200 | 250 | 65 | 18 | 125 | 95 | 345 | 280 | 14 | 370 | 32 | 80 | 35 | 10 | 205 | 200 | 116 |
| 50-125 | 80 | 50 | 100 | 385 | 132 | 160 | 50 | 16 | 100 | 70 | 240 | 190 | 14 | 285 | 24 | 50 | 27 | 8 | 130 | 110 | 64 |
| 50-160 | 80 | 50 | 100 | 385 | 160 | 180 | 50 | 16 | 100 | 70 | 265 | 212 | 14 | 285 | 24 | 50 | 27 | 8 | 147 | 125 | 72 |
| 50-200 | 80 | 50 | 100 | 385 | 160 | 200 | 50 | 16 | 100 | 70 | 265 | 212 | 14 | 285 | 24 | 50 | 27 | 8 | 161 | 146 | 81 |
| 50-250 | 80 | 50 | 125 | 500 | 180 | 225 | 65 | 18 | 125 | 95 | 320 | 250 | 14 | 370 | 32 | 80 | 35 | 10 | 183 | 169 | 120 |
| 50-315 | 80 | 50 | 125 | 500 | 225 | 280 | 65 | 18 | 125 | 95 | 345 | 280 | 14 | 370 | 32 | 80 | 35 | 10 | 210 | 197 | 117 |
| 65-160 | 100 | 65 | 100 | 500 | 160 | 200 | 65 | 16 | 125 | 95 | 280 | 212 | 14 | 370 | 32 | 80 | 35 | 10 | 160 | 130 | 108 |
| 65-200 | 100 | 65 | 100 | 500 | 180 | 225 | 65 | 18 | 125 | 95 | 320 | 250 | 14 | 370 | 32 | 80 | 35 | 10 | 174 | 152 | 115 |
| 65-250 | 100 | 65 | 125 | 500 | 200 | 250 | 80 | 20 | 160 | 120 | 360 | 280 | 18 | 370 | 32 | 80 | 35 | 10 | 195 | 175 | 120 |
| 80-160 | 125 | 80 | 125 | 500 | 180 | 225 | 65 | 16 | 125 | 95 | 320 | 250 | 14 | 370 | 32 | 80 | 35 | 10 | 186 | 142 | 113 |
| 80-200 | 125 | 80 | 125 | 500 | 180 | 250 | 65 | 18 | 125 | 95 | 345 | 280 | 14 | 370 | 32 | 80 | 35 | 10 | 188 | 158 | 128 |
| 80-250 | 125 | 80 | 125 | 500 | 225 | 280 | 80 | 20 | 160 | 120 | 400 | 315 | 18 | 370 | 32 | 80 | 35 | 10 | 225 | 185 | 143 |
| 100-200 | 125 | 100 | 125 | 500 | 200 | 280 | 80 | 20 | 160 | 120 | 360 | 280 | 18 | 370 | 32 | 80 | 35 | 10 | 211 | 170 | 135 |

Disegno schematico. Dimensioni in mm con tolleranze secondo EN 735-1995.

Pesi indicativi in Kg, riferiti a pompe in esecuzione "F" ghisa escluso motore, non impegnativi.

Schematic drawing. Dimensions in mm with tolerances to EN 735-1995 standards.

Weights in Kgs, referred to pump in cast iron "F" construction without motor, not certified.

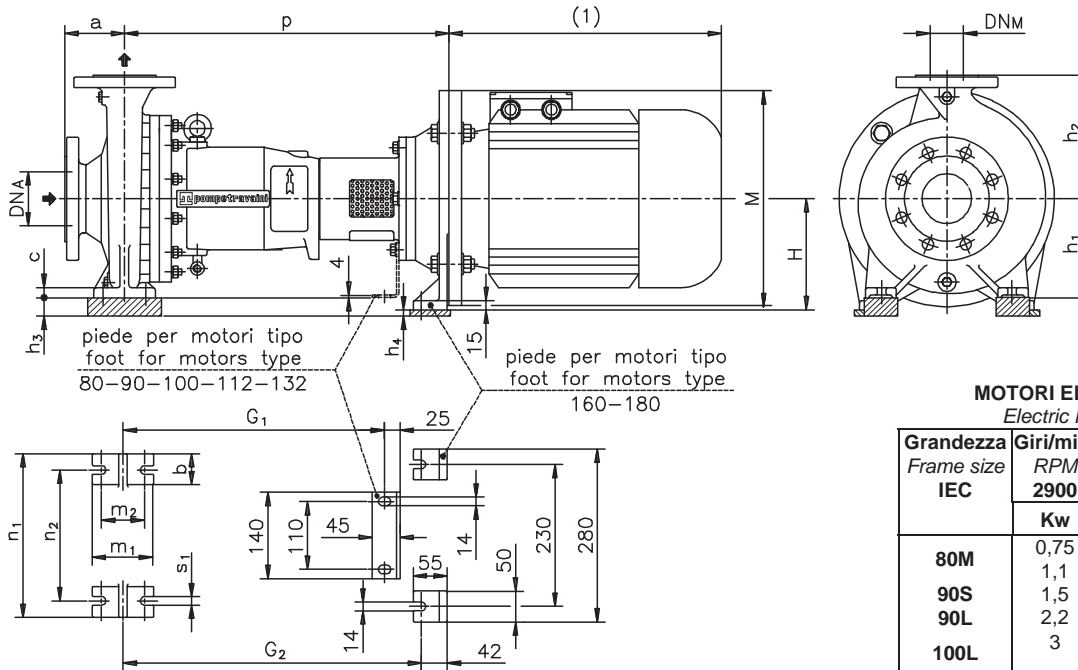
RIF. - Ref.: Z.A./C.T.

SOSTITUISCE - Replaces: 3500.100.201.0A

DATA - Date: GIUGNO 98 - June 98

N°.: 3500.100.201.01.A

Versione **MONOBLOCCO / M** **CLOSE - COUPLED / M** construction



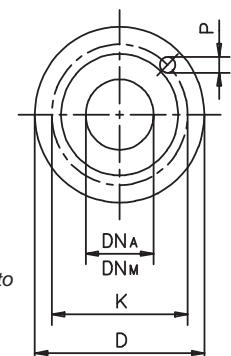
MOTORI ELETTRICI
Electric Motors

| Grandezza Frame size IEC | Giri/min. RPM | Giri/min. RPM | M |
|--------------------------------|------------------|------------------|-----|
| | 2900 | 1450 | |
| | Kw | Kw | |
| 80M | 0,75 | 0,55 | 200 |
| | 1,1 | 0,75 | |
| 90S | 1,5 | 1,1 | 200 |
| 90L | 2,2 | 1,5 | |
| 100L | 3 | 2,2 | 250 |
| | | 3 | |
| 112M | 4 | 4 | 250 |
| 132S | 5,5-7,5 | 5,5 | 300 |
| | | 7,5 | |
| 160M | 11-15 | 11 | 350 |
| 160L | 18,5 | 15 | |
| 180M | 22 | 18,5 | 350 |
| 180L | | 22 | |

| Pompa tipo Pump type | Versione MONOBLOCCO CLOSE-COUPLED construction | | | | | | | | | | | | | | | | |
|-------------------------|--|----------------|----------------|-----------------------|----------------|----------------|-------------------|-----|----------------|-----------------------|----------------|-----|----------------|----------------|-----|----------------|----------------|
| | motore 80-90 | | | motore 100-112 | | | motore 132 | | | motore 160-180 | | | | | | | |
| | p | G ₁ | Peso Weight | p | G ₁ | h ₃ | Peso Weight | p | G ₁ | h ₃ | Peso Weight | H | h ₃ | h ₄ | p | G ₂ | Peso Weight |
| 25-125 | 446 | 410 | 63 | 471 | 410 | 20 | 68 | | | | | | | | | | |
| 25-160 | 446 | 410 | 69 | 471 | 410 | - | 74 | 476 | 410 | 28 | 77 | | | | | | |
| 32-125 | 446 | 410 | 64 | 471 | 410 | 20 | 69 | 476 | 410 | 48 | 72 | 180 | 68 | - | 516 | 477 | 78 |
| 32-160 | 446 | 410 | 71 | 471 | 410 | - | 76 | 476 | 410 | 28 | 79 | 180 | 48 | - | 516 | 477 | 85 |
| 32-200 | 446 | 410 | 79 | 471 | 410 | - | 84 | 476 | 410 | - | 87 | 180 | 20 | - | 516 | 477 | 93 |
| 32-250 | | | | 580 | 540 | - | 126 | 601 | 562 | - | 129 | 200 | 20 | - | 630 | 585 | 140 |
| 40-125 | 446 | 410 | 66 | 471 | 410 | 20 | 71 | 476 | 410 | 48 | 74 | 180 | 68 | - | 516 | 477 | 61 |
| 40-160 | 446 | 410 | 73 | 471 | 410 | - | 78 | 476 | 410 | 28 | 81 | 180 | 48 | - | 516 | 477 | 65 |
| 40-200 | 446 | 410 | 82 | 471 | 410 | - | 87 | 476 | 410 | - | 90 | 180 | 20 | - | 516 | 477 | 81 |
| 40-250 | | | | 580 | 540 | - | 127 | 601 | 562 | - | 130 | 200 | 20 | - | 630 | 585 | 141 |
| 40-315 | | | | 580 | 540 | - | 126 | 601 | 562 | - | 129 | 200 | - | - | 630 | 585 | 140 |
| 50-125 | 446 | 410 | 74 | 471 | 410 | - | 80 | 476 | 410 | 28 | 83 | 180 | 48 | - | 516 | 477 | 59 |
| 50-160 | 446 | 410 | 77 | 471 | 410 | - | 82 | 476 | 410 | - | 85 | 180 | 20 | - | 516 | 477 | 64 |
| 50-200 | 446 | 410 | 86 | 471 | 410 | - | 91 | 476 | 410 | - | 94 | 180 | 20 | - | 516 | 477 | 66 |
| 50-250 | | | | 580 | 540 | - | 130 | 601 | 562 | - | 133 | 200 | 20 | - | 630 | 585 | 144 |
| 50-315 | | | | 580 | 540 | - | 127 | 601 | 562 | - | 130 | 200 | - | 25 | 630 | 585 | 141 |
| 65-160 | | | | 580 | 540 | - | 118 | 601 | 562 | - | 121 | 200 | 40 | - | 630 | 585 | 132 |
| 65-200 | | | | 580 | 540 | - | 125 | 601 | 562 | - | 128 | 200 | 20 | - | 630 | 585 | 139 |
| 65-250 | | | | 580 | 540 | - | 130 | 601 | 562 | - | 133 | 200 | - | - | 630 | 585 | 144 |
| 80-160 | | | | 580 | 540 | - | 133 | 601 | 562 | - | 136 | 200 | 20 | - | 630 | 585 | 147 |
| 80-200 | | | | 580 | 540 | - | 138 | 601 | 562 | - | 141 | 200 | 20 | - | 630 | 585 | 152 |
| 80-250 | | | | 580 | 540 | - | 153 | 601 | 562 | - | 156 | 200 | - | 25 | 630 | 585 | 167 |
| 100-200 | | | | 580 | 540 | - | 144 | 601 | 562 | - | 147 | 200 | - | - | 630 | 585 | 158 |

DIMENSIONI FLANGE
Flanges dimensions

| DN _A -DN _M | D | K | P | N° fori holes |
|----------------------------------|-----|-----|----|------------------|
| 25 | 115 | 85 | 14 | 4 |
| 32 | 140 | 100 | 18 | 4 |
| 40 | 150 | 110 | 18 | 4 |
| 50 | 165 | 125 | 18 | 4 |
| 65 | 185 | 145 | 18 | 4 |
| 80 | 200 | 160 | 18 | 8 |
| 100 | 220 | 180 | 18 | 8 |
| 125 | 250 | 210 | 18 | 8 |



FLANGE:

Dimensioni secondo
UNI 2223-
2229 PN16

FLANGES:

Dimensions to
UNI 2223-
2229 NP16
standards

(1) Dimensioni in funzione della marca del motore elettrico installato.
Not certified dimensions according to installed motor manufacture.

(h₃) (h₄) Spessori per allineamento motore - pompa esclusi dalla fornitura.
Raising pads for motor - pump alignment are not supplied by pompetravaini.

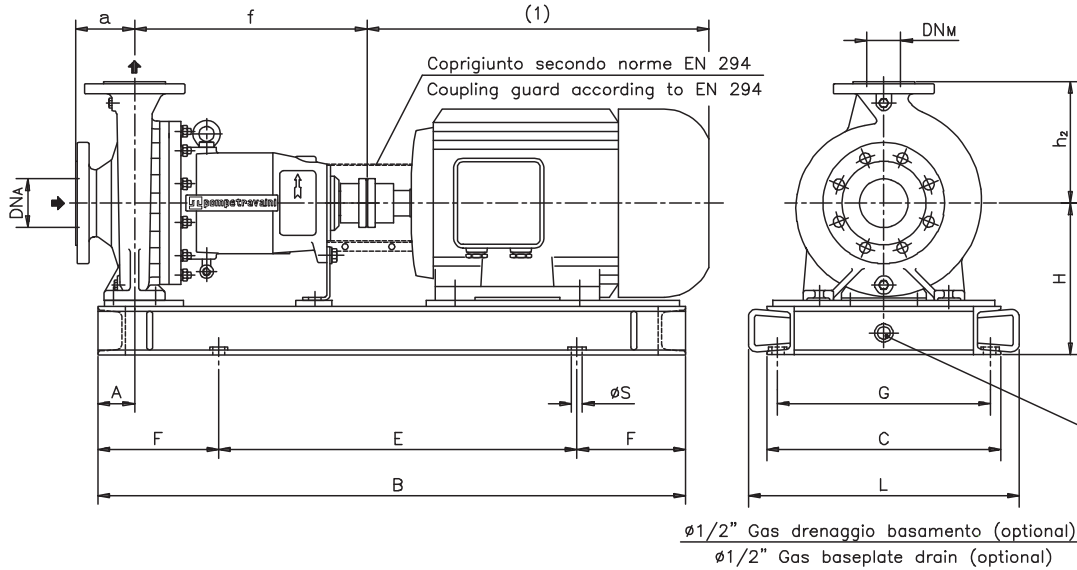
RIF. - Ref.: Z.A./C.T.

SOSTITUISCE - Replaces: 3500.100.201.0B

DATA - Date: GIUGNO 98 - June 98

N°.: 3500.100.201.01.B

Versione **ACCOPIATA (BASE - GIUNTO)**
COUPLED construction (BASEPLATE - COUPLING)



| Pompa tipo Pump type | DIMENSIONI Dimensions | | | | | | MOTORE ELETTRICO Electric Motor | | | | | | | | | | | | | | | | | |
|-------------------------|--------------------------|-----------------|-----|-----|----------------|----|---------------------------------|-----|----------------|---------|-----|----------------|------|-----|----------------|------|-----|----------------|-----------|-----|----------------|-----------|-----|----------------|
| | DN _A | DN _M | a | f | h ₂ | A | 80M | | | 90S/90L | | | 100L | | | 112M | | | 132S/132M | | | 160M/160L | | |
| | | | | | | | N° | H | Peso Weight | N° | H | Peso Weight | N° | H | Peso Weight | N° | H | Peso Weight | N° | H | Peso Weight | N° | H | Peso Weight |
| 25-125 | 40 | 25 | 80 | 385 | 140 | 60 | C01 | 202 | 91 | C01 | 202 | 90,5 | C01 | 202 | 89,5 | C01 | 202 | 88 | C03 | 222 | 106 | | | |
| 25-160 | 40 | 25 | 80 | 385 | 160 | 60 | C01 | 222 | 97 | C01 | 222 | 96,5 | C01 | 222 | 97 | C01 | 222 | 96,5 | C03 | 222 | 109 | | | |
| 32-125 | 50 | 32 | 80 | 385 | 140 | 60 | C01 | 202 | 92 | C01 | 202 | 91,5 | C01 | 202 | 90,5 | C01 | 202 | 89 | C03 | 222 | 107 | | | |
| 32-160 | 50 | 32 | 80 | 385 | 160 | 60 | C01 | 222 | 99 | C01 | 222 | 98,5 | C01 | 222 | 99 | C01 | 222 | 98,5 | C03 | 222 | 111 | | | |
| 32-200 | 50 | 32 | 80 | 385 | 180 | 60 | C01 | 250 | 105 | C01 | 250 | 107 | C01 | 250 | 106 | C01 | 250 | 107 | C03 | 250 | 123 | C03 | 250 | 120 |
| 32-250 | 50 | 32 | 100 | 500 | 225 | 75 | | | | C03 | 270 | 163 | C03 | 270 | 163 | C03 | 270 | 164 | C03 | 270 | 164 | C05 | 270 | 168 |
| 40-125 | 65 | 40 | 80 | 385 | 140 | 60 | C01 | 202 | 94 | C01 | 202 | 93 | C01 | 202 | 92 | C01 | 202 | 91 | C03 | 222 | 109 | C03 | 250 | 109 |
| 40-160 | 65 | 40 | 80 | 385 | 160 | 60 | C01 | 222 | 101 | C01 | 222 | 100 | C01 | 222 | 101 | C01 | 222 | 100 | C03 | 222 | 115 | C03 | 250 | 118 |
| 40-200 | 65 | 40 | 100 | 385 | 180 | 60 | C01 | 250 | 109 | C01 | 250 | 110 | C01 | 250 | 110 | C01 | 250 | 110 | C03 | 250 | 126 | C03 | 250 | 122 |
| 40-250 | 65 | 40 | 100 | 500 | 225 | 75 | | | | C03 | 270 | 164 | C03 | 270 | 164 | C03 | 270 | 165 | C03 | 270 | 165 | C05 | 270 | 169 |
| 40-315 | 65 | 40 | 125 | 500 | 250 | 75 | | | | C03 | 290 | 163 | C03 | 290 | 163 | C03 | 290 | 164 | C03 | 290 | 164 | C05 | 290 | 168 |
| 50-125 | 80 | 50 | 100 | 385 | 160 | 60 | C01 | 222 | 97 | C01 | 222 | 96,5 | C01 | 222 | 97 | C01 | 222 | 96,5 | C03 | 222 | 111 | C03 | 250 | 114 |
| 50-160 | 80 | 50 | 100 | 385 | 180 | 60 | C01 | 250 | 104 | C01 | 250 | 115 | C01 | 250 | 115 | C01 | 250 | 115 | C03 | 250 | 121 | C03 | 250 | 117 |
| 50-200 | 80 | 50 | 100 | 385 | 200 | 60 | C01 | 250 | 113 | C01 | 250 | 114 | C01 | 250 | 114 | C01 | 250 | 114 | C03 | 250 | 130 | C03 | 250 | 129 |
| 50-250 | 80 | 50 | 125 | 500 | 225 | 75 | | | | | | | C03 | 270 | 166 | C03 | 270 | 165 | C03 | 270 | 168 | C05 | 270 | 174 |
| 50-315 | 80 | 50 | 125 | 500 | 280 | 75 | | | | | | | C03 | 315 | 167 | C03 | 315 | 166 | C03 | 315 | 165 | C05 | 315 | 173 |
| 65-160 | 100 | 65 | 100 | 500 | 200 | 75 | | | | C03 | 250 | 155 | C03 | 250 | 156 | C03 | 250 | 156 | C03 | 250 | 157 | C05 | 250 | 156 |
| 65-200 | 100 | 65 | 100 | 500 | 225 | 75 | | | | | | | C03 | 270 | 170 | C03 | 270 | 171 | C03 | 270 | 171 | C05 | 270 | 177 |
| 65-250 | 100 | 65 | 125 | 500 | 250 | 90 | | | | | | | C05 | 290 | 174 | C05 | 290 | 174 | C05 | 290 | 175 | C05 | 290 | 176 |
| 80-160 | 125 | 80 | 125 | 500 | 225 | 75 | | | | | | | C03 | 270 | 129 | C03 | 270 | 125 | C03 | 270 | 122 | C05 | 270 | 133 |
| 80-200 | 125 | 80 | 125 | 500 | 250 | 75 | | | | | | | C03 | 270 | 176 | C03 | 270 | 175 | C03 | 270 | 175 | C05 | 270 | 183 |
| 80-250 | 125 | 80 | 125 | 500 | 280 | 90 | | | | | | | | | | | | | C05 | 315 | 198 | C05 | 315 | 197 |
| 100-200 | 125 | 100 | 125 | 500 | 280 | 90 | | | | | | | C05 | 290 | 200 | C05 | 290 | 199 | C05 | 290 | 199 | C05 | 290 | 198 |

DISEGNO SCHEMATICO. DIMENSIONI IN MM CON TOLLERANZE SECONDO EN 735-1995.
 PESI INDICATIVI IN KG, RIFERITI A POMPE IN ESECUZIONE "F" GHISA ESCLUSO MOTORE,
 NON IMPEGNATIVI.

Schematic drawing. Dimensions in mm with tolerances to EN 735-1995 standards.
 Weights in Kgs, referred to pump in cast iron "F" construction without motor, not certified.

(1) DIMENSIONI IN FUNZIONE DELLA MARCA DEL MOTORE ELETTRICO
 INSTALLATO.

Not certified dimensions according to installed motor manufacture

RIF. - Ref.:E.Z./C.T..

SOSTITUISCE - Replaces: 3500.1L3.2001.04.01

DATA - Date: NOVEMBRE 2011 - November 2011

N°.: 3500.1L3.2001.05.01

Versione **ACCOPIATA (BASE - GIUNTO)**
COUPLED construction (BASEPLATE - COUPLING)

BASAMENTI
 Base plates

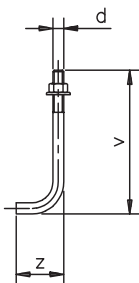
| N° | B | C | E | F | L | G | øS | N°fori holes |
|-----|------|-----|------|-----|-----|-----|----|--------------|
| C01 | 800 | 320 | 500 | 150 | 380 | 280 | 18 | 4 |
| C03 | 1000 | 385 | 600 | 200 | 445 | 345 | 18 | 4 |
| C05 | 1200 | 420 | 800 | 200 | 480 | 380 | 18 | 4 |
| C11 | 1350 | 500 | 950 | 200 | 570 | 452 | 18 | 4 |
| C13 | 1650 | 640 | 1050 | 300 | 710 | 592 | 18 | 4 |

DIMENSIONI FLANGE
 Flanges dimensions

| DN _A -DN _M | D | K | P | N°fori holes |
|----------------------------------|-----|-----|----|--------------|
| 25 | 115 | 85 | 14 | 4 |
| 32 | 140 | 100 | 18 | 4 |
| 40 | 150 | 110 | 18 | 4 |
| 50 | 165 | 125 | 18 | 4 |
| 65 | 185 | 145 | 18 | 4 |
| 80 | 200 | 160 | 18 | 8 |
| 100 | 220 | 180 | 18 | 8 |
| 125 | 250 | 210 | 18 | 8 |

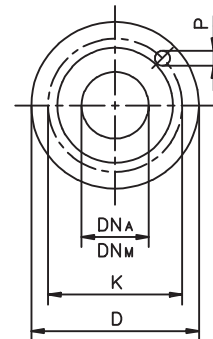
FLANGE:
 Dimensioni secondo
 UNI 2223-2229 PN16

FLANGES:
 Dimensions to
 UNI 2223-2229 NP16
 standards



BULLONI DI FONDAZIONE
 (OPTIONAL)
 Foundation bolts

| d | v | z |
|-----|-----|----|
| M14 | 280 | 50 |
| M16 | 350 | 60 |
| M20 | 400 | 80 |



| Pompa tipo Pump type | MOTORE ELETTRICO Electric Motor | | | | | | | | | | | | | | |
|-------------------------|---------------------------------|-----|-------------|------|-----|-------------|-----------|-----|-------------|------|-----|-------------|-----------|-----|-------------|
| | 180M/180L | | | 200L | | | 225S/225M | | | 250M | | | 280S/280M | | |
| | N° | H | Peso Weight | N° | H | Peso Weight | N° | H | Peso Weight | N° | H | Peso Weight | N° | H | Peso Weight |
| 25-125 | | | | | | | | | | | | | | | |
| 25-160 | | | | | | | | | | | | | | | |
| 32-125 | | | | | | | | | | | | | | | |
| 32-160 | | | | | | | | | | | | | | | |
| 32-200 | | | | | | | | | | | | | | | |
| 32-250 | C05 | 270 | 165 | | | | | | | | | | | | |
| 40-125 | | | | | | | | | | | | | | | |
| 40-160 | | | | | | | | | | | | | | | |
| 40-200 | C05 | 270 | 128 | | | | | | | | | | | | |
| 40-250 | C05 | 270 | 166 | | | | | | | | | | | | |
| 40-315 | C05 | 290 | 165 | | | | | | | | | | | | |
| 50-125 | | | | | | | | | | | | | | | |
| 50-160 | C05 | 270 | 123 | | | | | | | | | | | | |
| 50-200 | C05 | 270 | 132 | C11 | 330 | 170 | | | | | | | | | |
| 50-250 | C05 | 270 | 171 | C11 | 330 | 173 | C11 | 355 | 175 | C13 | 383 | 206 | C13 | 413 | 210 |
| 50-315 | C05 | 315 | 173 | C11 | 355 | 211 | C11 | 355 | 207 | C13 | 383 | 241 | C13 | 413 | 243 |
| 65-160 | C05 | 270 | 153 | C11 | 330 | 233 | | | | | | | | | |
| 65-200 | C05 | 270 | 174 | C11 | 330 | 208 | C11 | 355 | 208 | C13 | 383 | 238 | C13 | 413 | 239 |
| 65-250 | C05 | 290 | 173 | C11 | 330 | 212 | C11 | 355 | 215 | C13 | 383 | 146 | C13 | 413 | 249 |
| 80-160 | C05 | 270 | 130 | C11 | 330 | 173 | C11 | 355 | 175 | C13 | 383 | 203 | | | |
| 80-200 | C05 | 270 | 182 | C11 | 330 | 223 | C11 | 355 | 225 | C13 | 383 | 253 | C13 | 413 | 255 |
| 80-250 | C05 | 315 | 197 | C11 | 355 | 238 | C11 | 355 | 236 | C13 | 383 | 268 | C13 | 413 | 270 |
| 100-200 | C05 | 290 | 198 | C11 | 330 | 239 | C11 | 355 | 237 | C13 | 383 | 239 | C13 | 413 | 240 |

MOTORI ELETTRICI
 Electric Motors

| Grandezza Frame size | Giri/min RPM | Giri/min RPM |
|-------------------------|-----------------|-----------------|
| | 2900 | 1450 |
| IEC | Kw | Kw |
| 80M | 0,75 1,1 | 0,55 0,75 |
| 90S | 1,5 | 1,1 |
| 90L | 2,2 | 1,5 |
| 100L | 3 | 2,2 3 |
| 112M | 4 | 4 |
| 132S | 5,5-7,5 | 5,5 |
| 132M | | 7,5 |
| 160M | 11-15 | 11 |
| 160L | 18,5 | 15 |
| 180M | 22 | 18,5 |
| 180L | | 22 |
| 200L | 30-37 | 30 |
| 225S | | 37 |
| 225M | 45 | 45 |
| 250M | 55 | 55 |
| 280S | 75 | 75 |
| 280M | 90 | 90 |

DISEGNO SCHEMATICO. DIMENSIONI IN MM CON TOLLERANZE SECONDO EN 735-1995.
 PESI INDICATIVI IN KG, RIFERITI A POMPE IN ESECUZIONE "F" GHISA ESCLUSO MOTORE,
 NON IMPEGNATIVI.

Schematic drawing. Dimensions in mm with tolerances to EN 735-1995 standards.
 Weights in Kgs, referred to pump in cast iron "F" construction without motor, not certified.

(1) DIMENSIONI IN FUNZIONE DELLA MARCA DEL MOTORE ELETTRICO
 INSTALLATO.

Not certified dimensions according to installed motor manufacture.

RIF. - Ref.: E.Z./C.T.

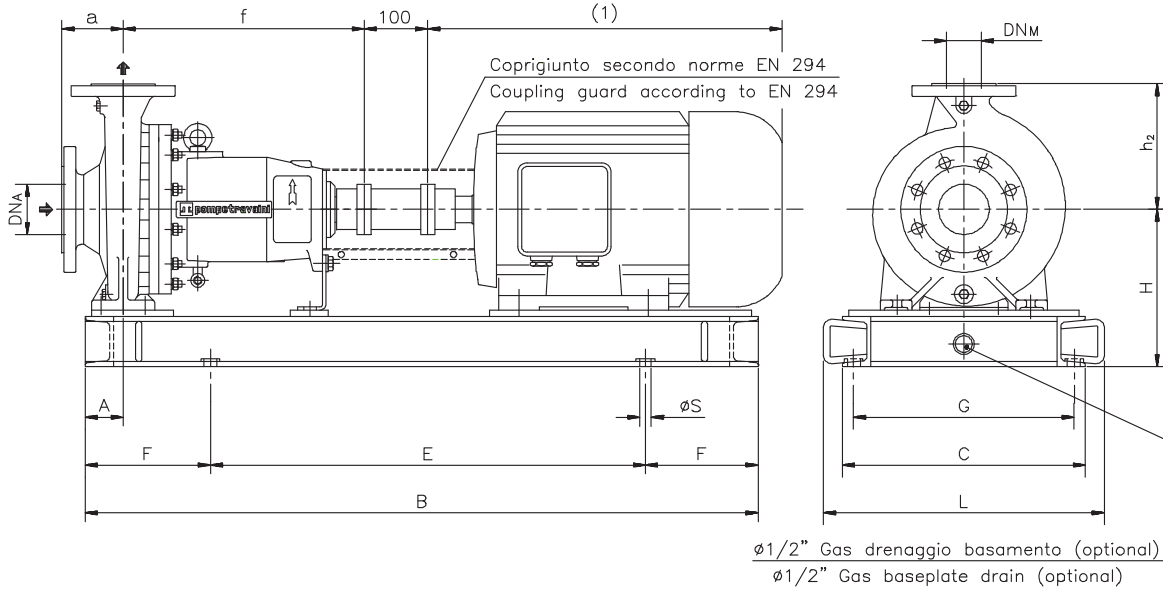
SOSTITUISCE - Replaces: 3500.1L3.2001.04.02

DATA - Date: NOVEMBRE 2011 - November 2011

N°.: 3500.1L3.2001.05.02



Versione **ACCOPIATA (BASE - GIUNTO SPAZIATORE)**
COUPLED construction (BASEPLATE - SPACER COUPLING)



| Pompa tipo Pump type | DIMENSIONI Dimensions | | | | | | MOTORE ELETTRICO Electric Motor | | | | | | | | | | | | | | | | | |
|-------------------------|--------------------------|-----------------|-----|-----|----------------|----|---------------------------------|-----|-------------|---------|-----|-------------|------|-----|-------------|------|-----|-------------|-----------|-----|-------------|-----------|-----|-------------|
| | DN _A | DN _M | a | f | h ₂ | A | 80M | | | 90S/90L | | | 100L | | | 112M | | | 132S/132M | | | 160M/160L | | |
| | | | | | | | N° | H | Peso Weight | N° | H | Peso Weight | N° | H | Peso Weight | N° | H | Peso Weight | N° | H | Peso Weight | N° | H | Peso Weight |
| 25-125 | 40 | 25 | 80 | 385 | 140 | 60 | C01 | 202 | 93 | C01 | 202 | 92,5 | C03 | 202 | 107 | C03 | 202 | 103 | C03 | 222 | 108 | | | |
| 25-160 | 40 | 25 | 80 | 385 | 160 | 60 | C01 | 222 | 91 | C01 | 222 | 90,5 | C03 | 222 | 104 | C03 | 222 | 104 | C03 | 222 | 103 | | | |
| 32-125 | 50 | 32 | 80 | 385 | 140 | 60 | C01 | 202 | 94 | C01 | 202 | 93,5 | C03 | 202 | 105 | C03 | 202 | 104 | C03 | 222 | 109 | | | |
| 32-160 | 50 | 32 | 80 | 385 | 160 | 60 | C01 | 222 | 101 | C01 | 222 | 100 | C03 | 222 | 114 | C03 | 222 | 113 | C03 | 222 | 113 | | | |
| 32-200 | 50 | 32 | 80 | 385 | 180 | 60 | C01 | 250 | 107 | C01 | 250 | 108 | C03 | 250 | 120 | C03 | 250 | 121 | C03 | 250 | 124 | C05 | 250 | 127 |
| 32-250 | 50 | 32 | 100 | 500 | 225 | 75 | | | | C03 | 270 | 165 | C03 | 270 | 165 | C03 | 270 | 166 | C05 | 270 | 171 | C05 | 270 | 170 |
| 40-125 | 65 | 40 | 80 | 385 | 140 | 60 | C01 | 202 | 95,5 | C01 | 202 | 95 | C03 | 202 | 107 | C03 | 202 | 108 | C03 | 222 | 110 | C05 | 250 | 117 |
| 40-160 | 65 | 40 | 80 | 385 | 160 | 60 | C01 | 222 | 103 | C01 | 222 | 102 | C03 | 222 | 116 | C03 | 222 | 115 | C03 | 222 | 117 | C05 | 250 | 126 |
| 40-200 | 65 | 40 | 100 | 385 | 180 | 60 | C01 | 250 | 110 | C01 | 250 | 111 | C03 | 250 | 124 | C03 | 250 | 124 | C03 | 250 | 127 | C05 | 250 | 130 |
| 40-250 | 65 | 40 | 100 | 500 | 225 | 75 | | | | C03 | 270 | 166 | C03 | 270 | 166 | C03 | 270 | 167 | C05 | 270 | 173 | C11 | 310 | 210 |
| 40-315 | 65 | 40 | 125 | 500 | 250 | 75 | | | | C03 | 290 | 165 | C03 | 290 | 165 | C03 | 290 | 164 | C05 | 290 | 172 | C11 | 330 | 207 |
| 50-125 | 80 | 50 | 100 | 385 | 160 | 60 | C01 | 222 | 98,5 | C01 | 222 | 98 | C03 | 222 | 112 | C03 | 222 | 111 | C03 | 222 | 135 | C05 | 250 | 122 |
| 50-160 | 80 | 50 | 100 | 385 | 180 | 60 | C01 | 250 | 107 | C01 | 250 | 108 | C03 | 250 | 121 | C03 | 250 | 121 | C03 | 250 | 124 | C05 | 250 | 126 |
| 50-200 | 80 | 50 | 100 | 385 | 200 | 60 | C01 | 250 | 115 | C01 | 250 | 116 | C03 | 250 | 129 | C03 | 250 | 129 | C03 | 250 | 132 | C05 | 250 | 134 |
| 50-250 | 80 | 50 | 125 | 500 | 225 | 75 | | | | | | | C03 | 270 | 168 | C03 | 270 | 170 | C05 | 270 | 176 | C11 | 310 | 215 |
| 50-315 | 80 | 50 | 125 | 500 | 280 | 75 | | | | | | | C03 | 315 | 169 | C03 | 315 | 168 | C05 | 315 | 173 | C11 | 355 | 214 |
| 65-160 | 100 | 65 | 100 | 500 | 200 | 75 | | | | C03 | 250 | 157 | C03 | 250 | 158 | C03 | 250 | 158 | C05 | 250 | 165 | C11 | 290 | 196 |
| 65-200 | 100 | 65 | 100 | 500 | 225 | 75 | | | | | | | C03 | 270 | 172 | C03 | 270 | 173 | C05 | 270 | 179 | C11 | 310 | 218 |
| 65-250 | 100 | 65 | 125 | 500 | 250 | 90 | | | | | | | C05 | 290 | 174 | C05 | 290 | 174 | C05 | 290 | 175 | C11 | 330 | 215 |
| 80-160 | 125 | 80 | 125 | 500 | 225 | 75 | | | | | | | C03 | 270 | 164 | C03 | 270 | 160 | C05 | 270 | 163 | C11 | 310 | 207 |
| 80-200 | 125 | 80 | 125 | 500 | 250 | 75 | | | | | | | C03 | 270 | 176 | C03 | 270 | 175 | C05 | 270 | 181 | C11 | 310 | 222 |
| 80-250 | 125 | 80 | 125 | 500 | 280 | 90 | | | | | | | | | | | | C05 | 315 | 198 | C11 | 355 | 236 | |
| 100-200 | 125 | 100 | 125 | 500 | 280 | 90 | | | | | | | C05 | 290 | 200 | C05 | 290 | 199 | C05 | 290 | 199 | C11 | 330 | 237 |

DISEGNO SCHEMATICO. DIMENSIONI IN MM CON TOLLERANZE SECONDO EN 735-1995.
 PESI INDICATIVI IN KG, RIFERITI A POMPE IN ESECUZIONE "F" GHISA ESCLUSO MOTORE,
 NON IMPEGNATIVI.

Schematic drawing. Dimensions in mm with tolerances to EN 735-1995 standards.
 Weights in Kgs, referred to pump in cast iron "F" construction without motor, not certified.

(1) DIMENSIONI IN FUNZIONE DELLA MARCA DEL MOTORE ELETTRICO
 INSTALLATO.

Not certified dimensions according to installed motor manufacture.

RIF. - Ref.: E.Z./C.T.

SOSTITUISCE - Replaces: 3500.1L5.2001.03.01

DATA - Date: NOVEMBRE 2011 - November 2011

N°.: 3500.1L5.2001.04.01

DIMENSIONI D'INGOMBRO / Overall dimensions.
 POMPE CENTRIFUGHE MONOSTADIO
 Monostage centrifugal pumps
 SERIE / Series
TCK gr. 1-2 pag.2/2



200 Newsome Drive
 Yorktown, VA 23693
 1-800-535-4243
 www.Travaini.com

Versione **ACCOPIATA (BASE - GIUNTO SPAZIATORE)**
COUPLED construction (BASEPLATE - SPACER COUPLING)

BASAMENTI
 Base plates

| N° | B | C | E | F | L | G | øS | N°fori holes |
|-----|------|-----|------|-----|-----|-----|----|--------------|
| C01 | 800 | 320 | 500 | 150 | 380 | 280 | 18 | 4 |
| C03 | 1000 | 385 | 600 | 200 | 445 | 345 | 18 | 4 |
| C05 | 1200 | 420 | 800 | 200 | 480 | 380 | 18 | 4 |
| C11 | 1350 | 500 | 950 | 200 | 570 | 452 | 18 | 4 |
| C13 | 1650 | 640 | 1050 | 300 | 710 | 592 | 18 | 4 |

DIMENSIONI FLANGE
 Flanges dimensions

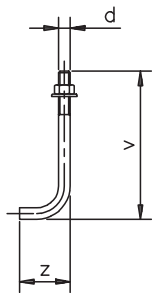
| DN _A -DN _M | D | K | P | N°fori holes |
|----------------------------------|-----|-----|----|--------------|
| 25 | 115 | 85 | 14 | 4 |
| 32 | 140 | 100 | 18 | 4 |
| 40 | 150 | 110 | 18 | 4 |
| 50 | 165 | 125 | 18 | 4 |
| 65 | 185 | 145 | 18 | 4 |
| 80 | 200 | 160 | 18 | 8 |
| 100 | 220 | 180 | 18 | 8 |
| 125 | 250 | 210 | 18 | 8 |

FLANGE:

Dimensioni secondo
 UNI 2223-2229 PN16

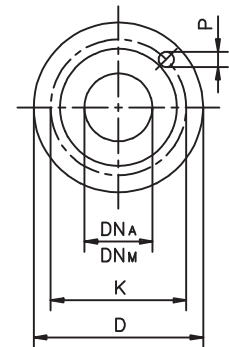
FLANGES:

Dimensions to
 UNI 2223-2229 NP16
 standards



BULLONI DI FONDAZIONE
 (OPTIONAL)
 Foundation bolts

| d | v | z |
|-----|-----|----|
| M14 | 280 | 50 |
| M16 | 350 | 60 |
| M20 | 400 | 80 |



| Pompa tipo Pump type | MOTORE ELETTRICO Electric Motor | | | | | | | | | | | | | | |
|-------------------------|---------------------------------|-----|-------------|------|-----|-------------|-----------|-----|-------------|------|-----|-------------|-----------|-----|-------------|
| | 180M/180L | | | 200L | | | 225S/225M | | | 250M | | | 280S/280M | | |
| | N° | H | Peso Weight | N° | H | Peso Weight | N° | H | Peso Weight | N° | H | Peso Weight | N° | H | Peso Weight |
| 25-125 | | | | | | | | | | | | | | | |
| 25-160 | | | | | | | | | | | | | | | |
| 32-125 | | | | | | | | | | | | | | | |
| 32-160 | | | | | | | | | | | | | | | |
| 32-200 | | | | | | | | | | | | | | | |
| 32-250 | C05 | 270 | 170 | | | | | | | | | | | | |
| 40-125 | | | | | | | | | | | | | | | |
| 40-160 | | | | | | | | | | | | | | | |
| 40-200 | C05 | 270 | 130 | | | | | | | | | | | | |
| 40-250 | C11 | 310 | 207 | | | | | | | | | | | | |
| 40-315 | C11 | 330 | 207 | C13 | 333 | 237 | | | | | | | | | |
| 50-125 | | | | | | | | | | | | | | | |
| 50-160 | C05 | 270 | 126 | | | | | | | | | | | | |
| 50-200 | C05 | 270 | 134 | C11 | 330 | 173 | | | | | | | | | |
| 50-250 | C11 | 310 | 215 | C13 | 333 | 245 | C13 | 358 | 246 | C13 | 383 | 247 | C13 | 413 | 249 |
| 50-315 | C11 | 355 | 214 | C13 | 358 | 243 | C13 | 358 | 239 | C13 | 383 | 243 | C13 | 413 | 245 |
| 65-160 | C11 | 310 | 203 | C13 | 333 | 265 | | | | | | | | | |
| 65-200 | C11 | 310 | 215 | C13 | 333 | 240 | C13 | 358 | 240 | C13 | 383 | 240 | C13 | 413 | 241 |
| 65-250 | C11 | 330 | 212 | C13 | 333 | 242 | C13 | 358 | 245 | C13 | 383 | 246 | C13 | 413 | 249 |
| 80-160 | C11 | 310 | 204 | C13 | 333 | 237 | C13 | 358 | 240 | C13 | 383 | 238 | | | |
| 80-200 | C11 | 310 | 221 | C13 | 333 | 253 | C13 | 358 | 255 | C13 | 383 | 253 | C13 | 413 | 255 |
| 80-250 | C11 | 355 | 236 | C13 | 358 | 268 | C13 | 358 | 266 | C13 | 383 | 268 | C13 | 413 | 270 |
| 100-200 | C11 | 330 | 237 | C13 | 333 | 269 | C13 | 358 | 267 | C13 | 383 | 269 | C13 | 413 | 271 |

MOTORI ELETTRICI
 Electric Motors

| Grandezza Frame size | Giri/min RPM | Giri/min RPM |
|-------------------------|-----------------|-----------------|
| | 2900 | 1450 |
| IEC | Kw | Kw |
| 80M | 0,75 1,1 | 0,55 0,75 |
| 90S | 1,5 | 1,1 |
| 90L | 2,2 | 1,5 |
| 100L | 3 | 2,2 3 |
| 112M | 4 | 4 |
| 132S | | 5,5 |
| 132M | 5,5-7,5 | 7,5 |
| 160M | 11-15 | 11 |
| 160L | 18,5 | 15 |
| 180M | 22 | 18,5 |
| 180L | | 22 |
| 200L | 30-37 | 30 |
| 225S | | 37 |
| 225M | 45 | 45 |
| 250M | 55 | 55 |
| 280S | 75 | 75 |
| 280M | 90 | 90 |

DISEGNO SCHEMATICO. DIMENSIONI IN MM CON TOLLERANZE SECONDO EN 735-1995.
 PESI INDICATIVI IN KG, RIFERITI A POMPE IN ESECUZIONE "F" GHISA ESCLUSO MOTORE,
 NON IMPEGNATIVI.

Schematic drawing. Dimensions in mm with tolerances to EN 735-1995 standards.
 Weights in Kgs, referred to pump in cast iron "F" construction without motor, not certified.

(1) DIMENSIONI IN FUNZIONE DELLA MARCA DEL MOTORE ELETTRICO
 INSTALLATO.

Not certified dimensions according to installed motor manufacture.

RIF. - Ref.: E.Z./C.T.

SOSTITUISCE - Replaces: 3500.1L5.2001.03.02

DATA - Date: NOVEMBRE 2011 - November 2011

N°.: 3500.1L5.2001.04.02