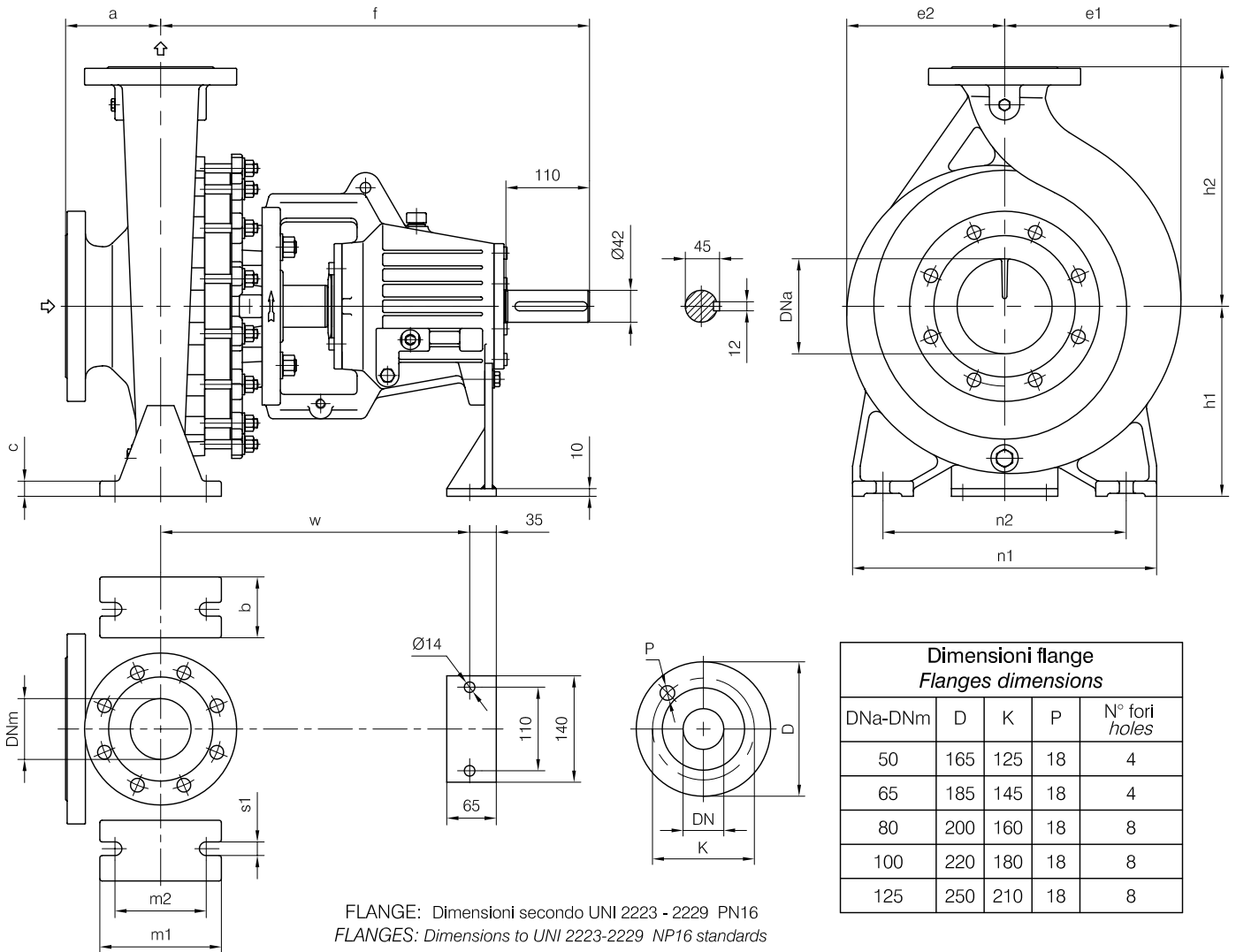




Versione ad **ASSE NUDO**
 Unificata secondo ISO 2858

BARESHAF construction
 According to ISO 2858 standards



| Dimensioni flange Flanges dimensions | | | | |
|---|-----|-----|----|---------------|
| DNa-DNm | D | K | P | N° fori holes |
| 50 | 165 | 125 | 18 | 4 |
| 65 | 185 | 145 | 18 | 4 |
| 80 | 200 | 160 | 18 | 8 |
| 100 | 220 | 180 | 18 | 8 |
| 125 | 250 | 210 | 18 | 8 |

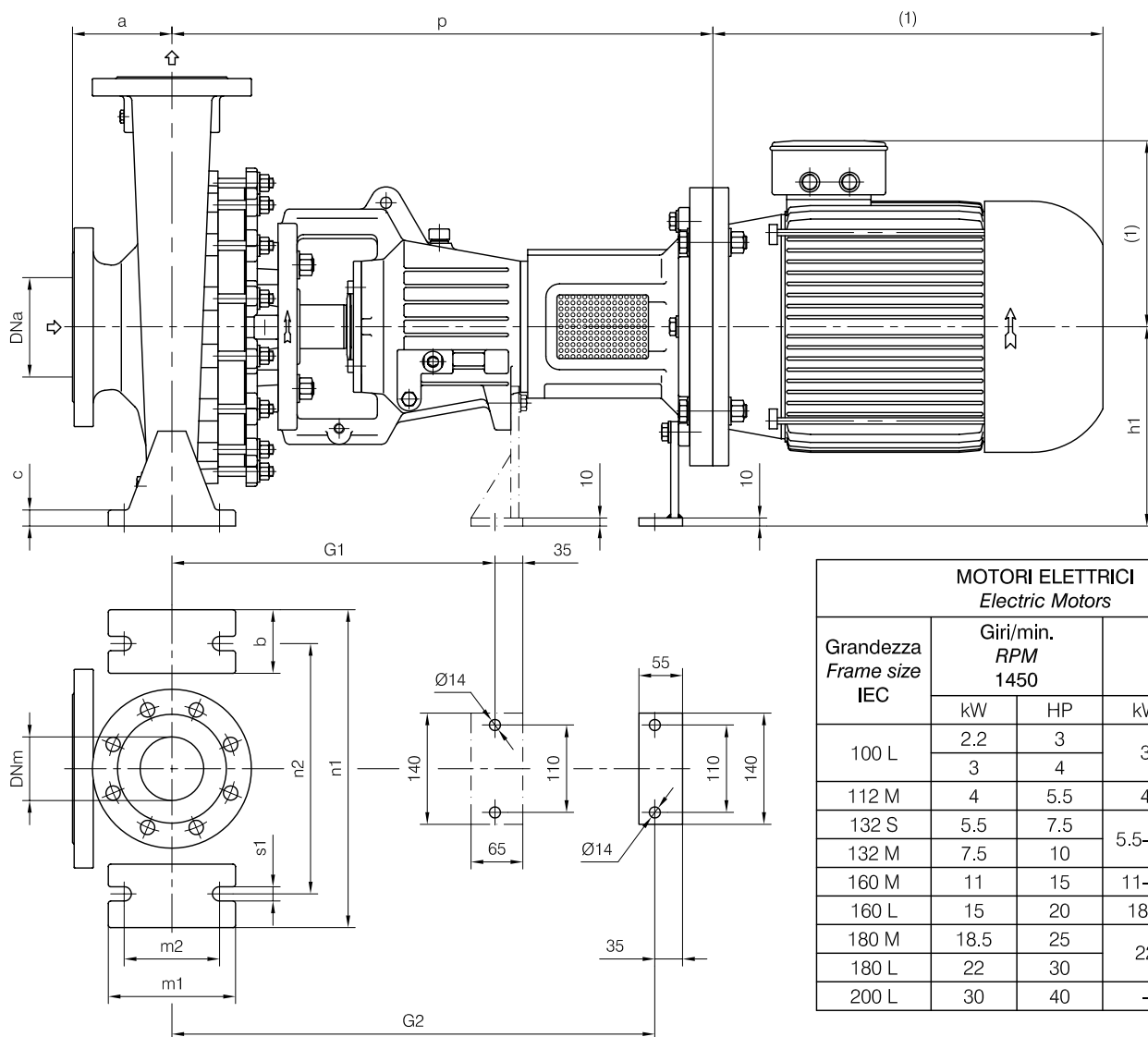
| POMPA TIPO Pump type | Dimensioni costruttive Construction dimensions | | | | | | | | | | | | | | | | | |
|-------------------------|--|-----|-----|-----|-----|-----|-----|----|----|-----|-----|-----|-----|----|-----|-----|-----|-------------|
| | gr. | DNa | DNm | a | f | h1 | h2 | b | c | m1 | m2 | n1 | n2 | s1 | w | e1 | e2 | Peso Weight |
| 50-315 | 3 | 80 | 50 | 125 | 565 | 225 | 280 | 65 | 18 | 125 | 95 | 345 | 280 | 14 | 405 | 210 | 197 | 118 |
| 65-315 | 3 | 100 | 65 | 125 | 565 | 225 | 280 | 80 | 20 | 160 | 120 | 400 | 315 | 18 | 405 | 226 | 209 | 138 |
| 80-315 | 3 | 125 | 80 | 125 | 565 | 250 | 315 | 80 | 20 | 160 | 120 | 400 | 315 | 18 | 405 | 232 | 210 | 140 |

Disegno schematico. Dimensioni in mm con tolleranze secondo EN 735-1995.
 Pesì indicativi in Kg, riferiti a pompe in ghisa escluso motore, non impegnativi.
 Schematic drawing. Dimensions in mm with tolerances to EN 735-1995 standards.
 Weights in Kgs, referred to pumps in cast iron without motor, not certified.



Versione **MONOBLOCCO**

CLOSE-COUPLED construction



| MOTORI ELETTRICI Electric Motors | | | | |
|-------------------------------------|--------------------------|-----|--------------------------|--------|
| Grandezza Frame size IEC | Giri/min. RPM 1450 | | Giri/min. RPM 2900 | |
| | kW | HP | kW | HP |
| 100 L | 2.2 | 3 | 3 | 4 |
| | 3 | 4 | | |
| 112 M | 4 | 5.5 | 4 | 5.5 |
| 132 S | 5.5 | 7.5 | 5.5-7.5 | 7.5-10 |
| 132 M | 7.5 | 10 | | |
| 160 M | 11 | 15 | 11-15 | 15-20 |
| 160 L | 15 | 20 | 18.5 | 25 |
| 180 M | 18.5 | 25 | 22 | 30 |
| 180 L | 22 | 30 | | |
| 200 L | 30 | 40 | - | - |

(1) Dimensioni in funzione della marca del motore installato.
 (1) Not certified dimensions according to installed motor manufacture.

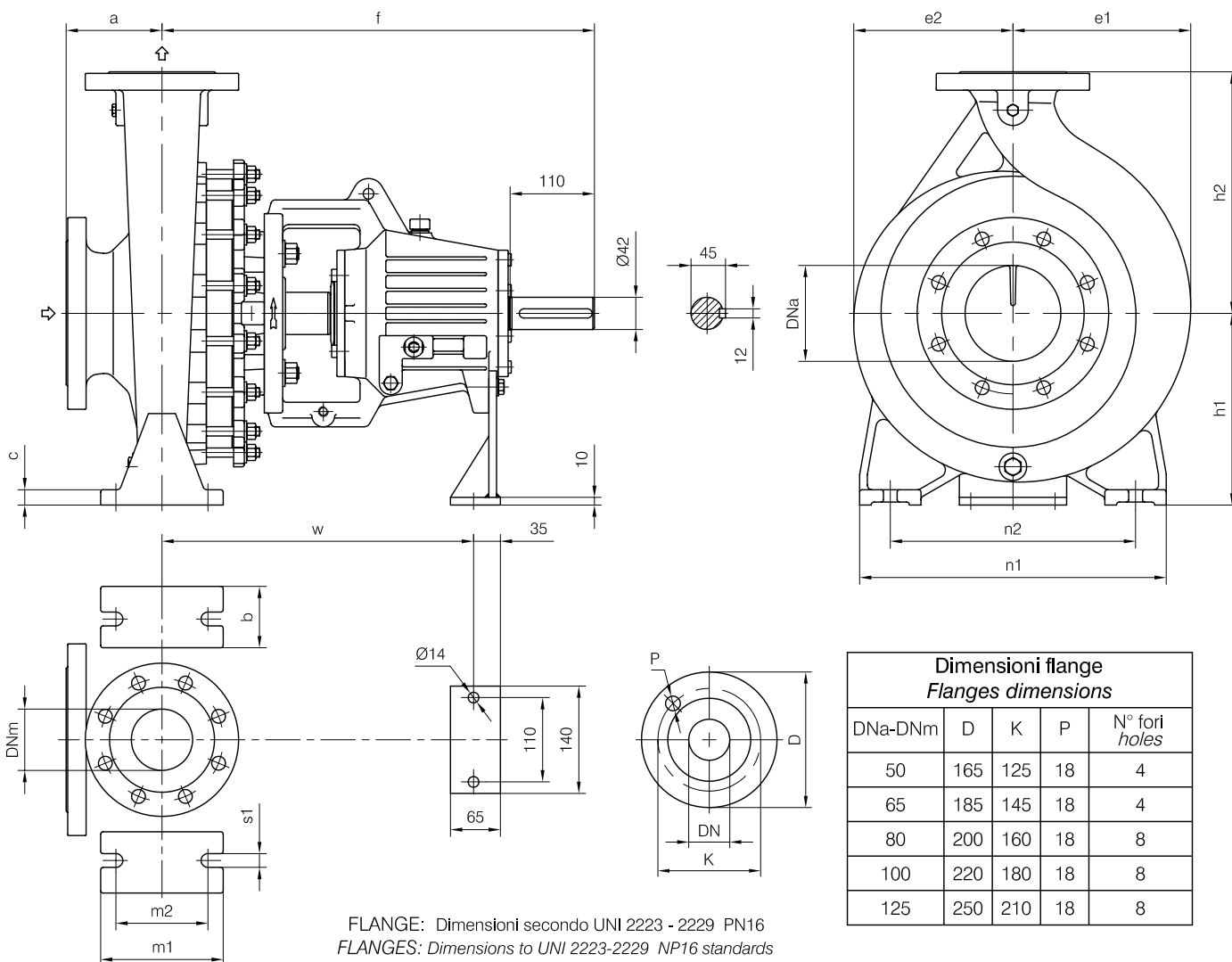
| Dimensioni costruttive Monoblocco Close-coupled construction dimensions | | | | | | | | | | | | | |
|---|----------------------|-----|-----|-------------|------------------|-----|-------------|----------------------|-----|-------------|------------------|-----|-------------|
| POMPA TIPO Pump type | motore motor 100-112 | | | | motore motor 132 | | | motore motor 160-180 | | | motore motor 200 | | |
| | gr. | p | G1 | Peso Weight | p | G2 | Peso Weight | p | G2 | Peso Weight | p | G2 | Peso Weight |
| 50-315 | 3 | 619 | 405 | 131 | 640 | 608 | 134 | 669 | 608 | 151 | - | - | - |
| 65-315 | 3 | 631 | 405 | 151 | 652 | 608 | 154 | 681 | 608 | 171 | 684 | 608 | 177 |
| 80-315 | 3 | 631 | 405 | 153 | 652 | 608 | 156 | 681 | 608 | 173 | 684 | 608 | 179 |

Disegno schematico. Dimensioni in mm con tolleranze secondo EN 735-1995.
 Pesì indicativi in Kg, riferiti a pompe in ghisa escluso motore, non impegnativi.
 Schematic drawing. Dimensions in mm with tolerances to EN 735-1995 standards.
 Weights in Kgs, referred to pumps in cast iron without motor, not certified.



Versione ad **ASSE NUDO**
 Unificata secondo ISO 2858

BARESHAF construction
 According to ISO 2858 standards



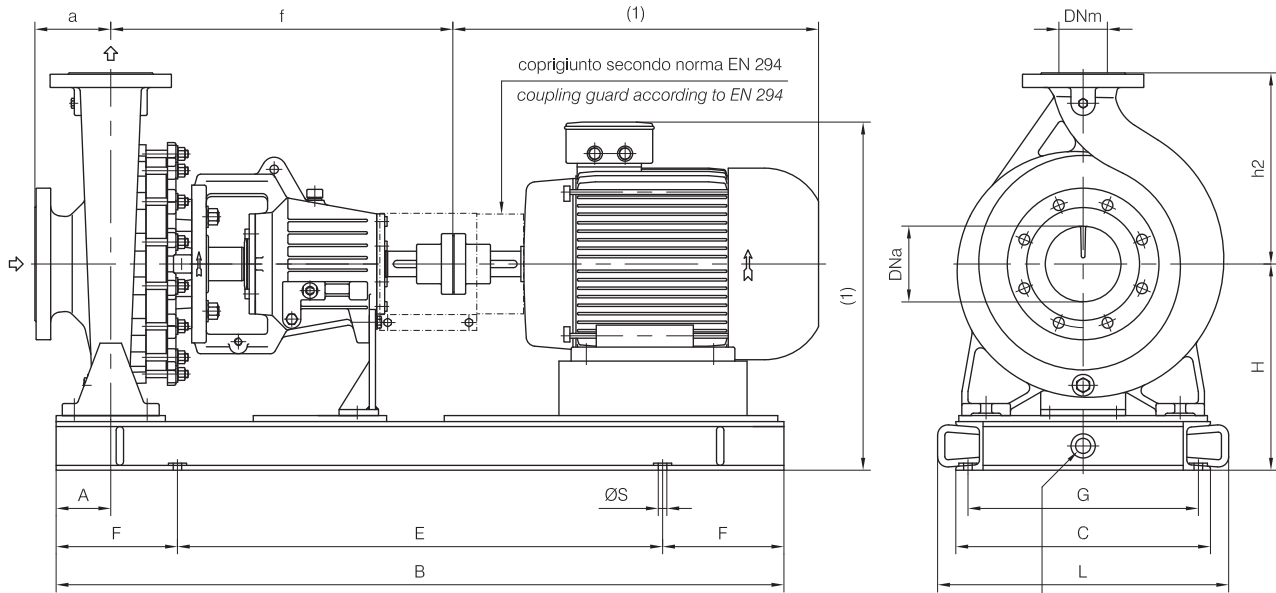
| POMPA TIPO Pump type | Dimensioni costruttive Construction dimensions | | | | | | | | | | | | | | | | | |
|-------------------------|--|-----|-----|-----|-----|-----|-----|----|----|-----|-----|-----|-----|----|-----|-----|-----|-------------|
| | gr. | DNa | DNm | a | f | h1 | h2 | b | c | m1 | m2 | n1 | n2 | s1 | w | e1 | e2 | Peso Weight |
| 50-315 | 3 | 80 | 50 | 125 | 565 | 225 | 280 | 65 | 18 | 125 | 95 | 345 | 280 | 14 | 405 | 210 | 197 | 118 |
| 65-315 | 3 | 100 | 65 | 125 | 565 | 225 | 280 | 80 | 20 | 160 | 120 | 400 | 315 | 18 | 405 | 226 | 209 | 138 |
| 80-315 | 3 | 125 | 80 | 125 | 565 | 250 | 315 | 80 | 20 | 160 | 120 | 400 | 315 | 18 | 405 | 232 | 210 | 140 |

Disegno schematico. Dimensioni in mm con tolleranze secondo EN 735-1995.
 Pesì indicativi in Kg, riferiti a pompe in ghisa escluso motore, non impegnativi.
 Schematic drawing. Dimensions in mm with tolerances to EN 735-1995 standards.
 Weights in Kgs, referred to pumps in cast iron without motor, not certified.



Versione **ACCOPIATA**
(BASE-GIUNTO)

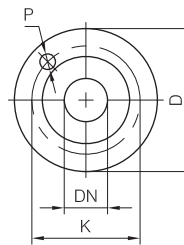
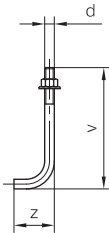
COUPLED construction
(BASEPLATE-COUPLING)



drenaggio basamento Ø1/2" GAS (optional)
 baseplate drain Ø1/2" GAS (optional)

| Dimensioni Basamento Baseplate dimensions | | | | | | | | |
|--|------|-----|-----|-----|-----|-----|----|---------------|
| N° | B | C | E | F | L | G | ØS | N° fori holes |
| C05 | 1200 | 420 | 800 | 200 | 480 | 380 | 18 | 4 |
| C11 | 1350 | 500 | 950 | 200 | 570 | 452 | 18 | 4 |

| Bulloni di fondazione (optional) Foundation bolts (optional) | | | |
|---|-----|----|--|
| d | v | z | |
| M14 | 280 | 50 | |
| M16 | 350 | 60 | |



| Dimensioni flange Flanges dimensions | | | | |
|---|-----|-----|----|---------------|
| DNa-DNm | D | K | P | N° fori holes |
| 50 | 165 | 125 | 18 | 4 |
| 65 | 185 | 145 | 18 | 4 |
| 80 | 200 | 160 | 18 | 8 |
| 100 | 220 | 180 | 18 | 8 |
| 125 | 250 | 210 | 18 | 8 |

FLANGE: Dimensioni secondo UNI 2223 - 2229 PN16
 FLANGES: Dimensions to UNI 2223-2229 NP16 standards

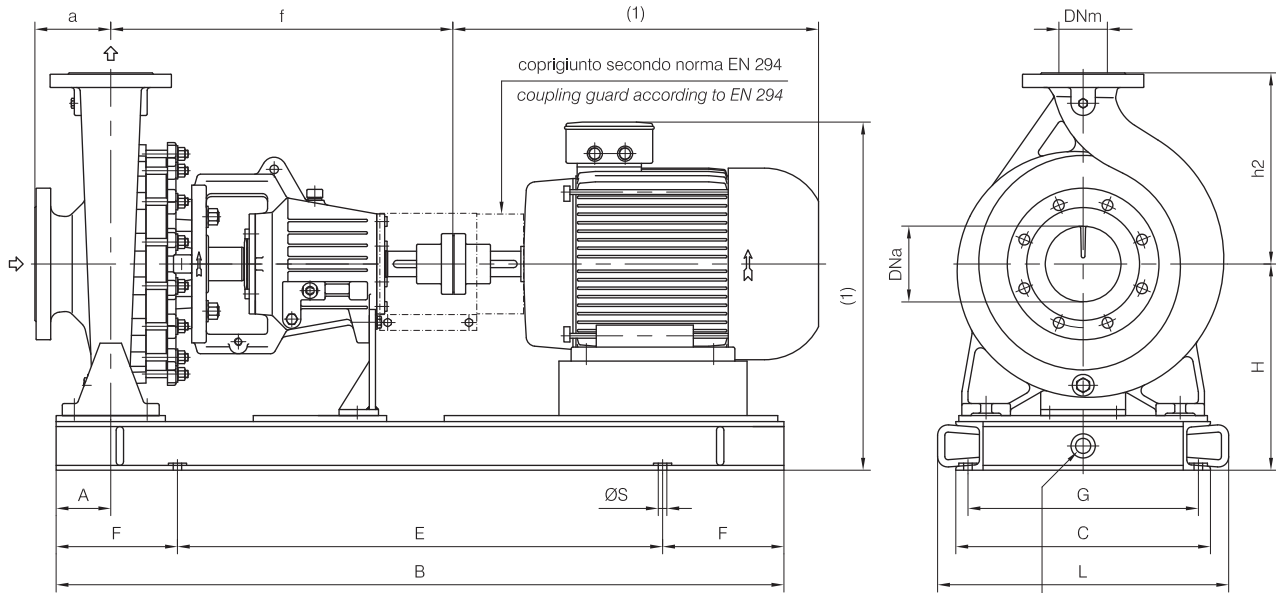
(1) Dimensioni in funzione della marca del motore installato.
 (1) Not certified dimensions according to installed motor manufacture.

| Dimensioni costruttive versione Accoppiata Coupled construction dimensions | | | | | | | | | | | | | | | | | | | |
|--|-------------------------------------|-----|-----|-----|-----|-----|----|---------------------|-----|-------------|------------------------|-----|-------------|------------------------|-----|-------------|----------------------|-----|-------------|
| POMPA TIPO Pump type | Dimensioni pompa Pump dimensions | | | | | | | motore 132 motor | | | motore 160M/L motor | | | motore 180M/L motor | | | motore 200L motor | | |
| | gr. | DNa | DNm | a | f | h2 | A | N° | H | Peso Weight | N° | H | Peso Weight | N° | H | Peso Weight | N° | H | Peso Weight |
| 50-315 | 3 | 80 | 50 | 125 | 565 | 280 | 75 | C05 | 315 | 172 | C05 | 315 | 177 | C11 | 355 | 207 | C11 | 355 | 207 |
| 65-315 | 3 | 100 | 65 | 125 | 565 | 280 | 90 | C05 | 315 | 202 | C05 | 315 | 197 | C11 | 355 | 227 | C11 | 355 | 227 |
| 80-315 | 3 | 125 | 80 | 125 | 565 | 315 | 90 | C05 | 340 | 208 | C05 | 340 | 208 | C11 | 380 | 228 | C11 | 380 | 228 |

Disegno schematico. Dimensioni in mm con tolleranze secondo EN 735-1995.
 Pesì indicativi in Kg, riferiti a pompe in ghisa escluso motore, non impegnativi.
 Schematic drawing. Dimensions in mm with tolerances to EN 735-1995 standards.
 Weights in Kgs, referred to pumps in cast iron without motor, not certified.

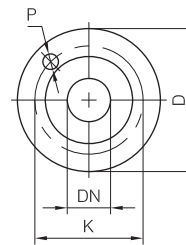
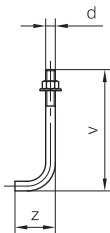
Versione **ACCOPIATA**
(BASE-GIUNTO)

COUPLED construction
(BASEPLATE-COUPLING)



| Dimensioni Basamento Baseplate dimensions | | | | | | | | |
|--|------|-----|-----|-----|-----|-----|----|---------------|
| N° | B | C | E | F | L | G | ØS | N° fori holes |
| C05 | 1200 | 420 | 800 | 200 | 480 | 380 | 18 | 4 |
| C11 | 1350 | 500 | 950 | 200 | 570 | 452 | 18 | 4 |

| Bulloni di fondazione (optional) Foundation bolts (optional) | | | |
|---|-----|----|--|
| d | v | z | |
| M14 | 280 | 50 | |
| M16 | 350 | 60 | |



| Dimensioni flange Flanges dimensions | | | | |
|---|-----|-----|----|---------------|
| DNa-DNm | D | K | P | N° fori holes |
| 50 | 165 | 125 | 18 | 4 |
| 65 | 185 | 145 | 18 | 4 |
| 80 | 200 | 160 | 18 | 8 |
| 100 | 220 | 180 | 18 | 8 |
| 125 | 250 | 210 | 18 | 8 |

FLANGE: Dimensioni secondo UNI 2223 - 2229 PN16
 FLANGES: Dimensions to UNI 2223-2229 NP16 standards

(1) Dimensioni in funzione della marca del motore installato.
 (1) Not certified dimensions according to installed motor manufacture.

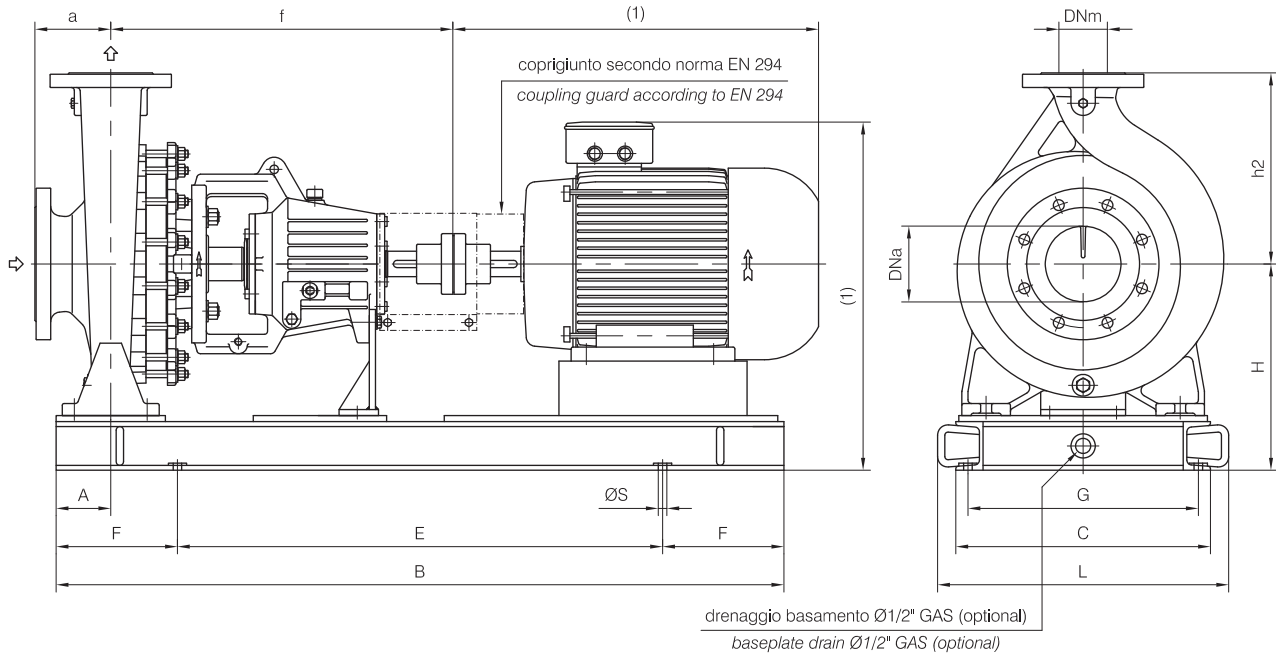
| Dimensioni costruttive versione Accoppiata Coupled construction dimensions | | | | | | | | | | | | | | | | | | | |
|--|-----|-------------------------------------|-----|-----|-----|-----|----|---------------------|-----|-------------|------------------------|-----|-------------|------------------------|-----|-------------|----------------------|-----|-------------|
| POMPA TIPO Pump type | gr. | Dimensioni pompa Pump dimensions | | | | | | motore 132 motor | | | motore 160M/L motor | | | motore 180M/L motor | | | motore 200L motor | | |
| | | DNa | DNm | a | f | h2 | A | N° | H | Peso Weight | N° | H | Peso Weight | N° | H | Peso Weight | N° | H | Peso Weight |
| 50-315 | 3 | 80 | 50 | 125 | 565 | 280 | 75 | C05 | 315 | 172 | C05 | 315 | 177 | C11 | 355 | 207 | C11 | 355 | 207 |
| 65-315 | 3 | 100 | 65 | 125 | 565 | 280 | 90 | C05 | 315 | 202 | C05 | 315 | 197 | C11 | 355 | 227 | C11 | 355 | 227 |
| 80-315 | 3 | 125 | 80 | 125 | 565 | 315 | 90 | C05 | 340 | 208 | C05 | 340 | 208 | C11 | 380 | 228 | C11 | 380 | 228 |

Disegno schematico. Dimensioni in mm con tolleranze secondo EN 735-1995.
 Pesì indicativi in Kg, riferiti a pompe in ghisa escluso motore, non impegnativi.
 Schematic drawing. Dimensions in mm with tolerances to EN 735-1995 standards.
 Weights in Kgs, referred to pumps in cast iron without motor, not certified.



Versione **ACCOPIATA**
(BASE-GIUNTO)

COUPLED construction
(BASEPLATE-COUPLING)



(1) Dimensioni in funzione della marca del motore installato.
 (1) Not certified dimensions according to installed motor manufacture.

| Dimensioni costruttive versione Accoppiata Coupled construction dimensions | | | | | | | | | | | | | | | | | | | | |
|--|-------------------------------------|-----|-----|-----|-----|-----|------------------------|-----|-----|----------------------|----|---|------------------------|----|---|------------------------|----|---|----------------|---|
| POMPA TIPO Pump type | Dimensioni pompa Pump dimensions | | | | | | motore 225S/M motor | | | motore 250M motor | | | motore 280S/M motor | | | motore 315S/M motor | | | | |
| | gr. | DNa | DNm | a | f | h2 | A | N° | H | Peso Weight | N° | H | Peso Weight | N° | H | Peso Weight | N° | H | Peso Weight | |
| 50-315 | 3 | 80 | 50 | 125 | 565 | 280 | 75 | C11 | 355 | 207 | - | - | - | - | - | - | - | - | - | - |
| 65-315 | 3 | 100 | 65 | 125 | 565 | 280 | 90 | C11 | 355 | 227 | - | - | - | - | - | - | - | - | - | - |
| 80-315 | 3 | 125 | 80 | 125 | 565 | 315 | 90 | C11 | 380 | 233 | - | - | - | - | - | - | - | - | - | - |

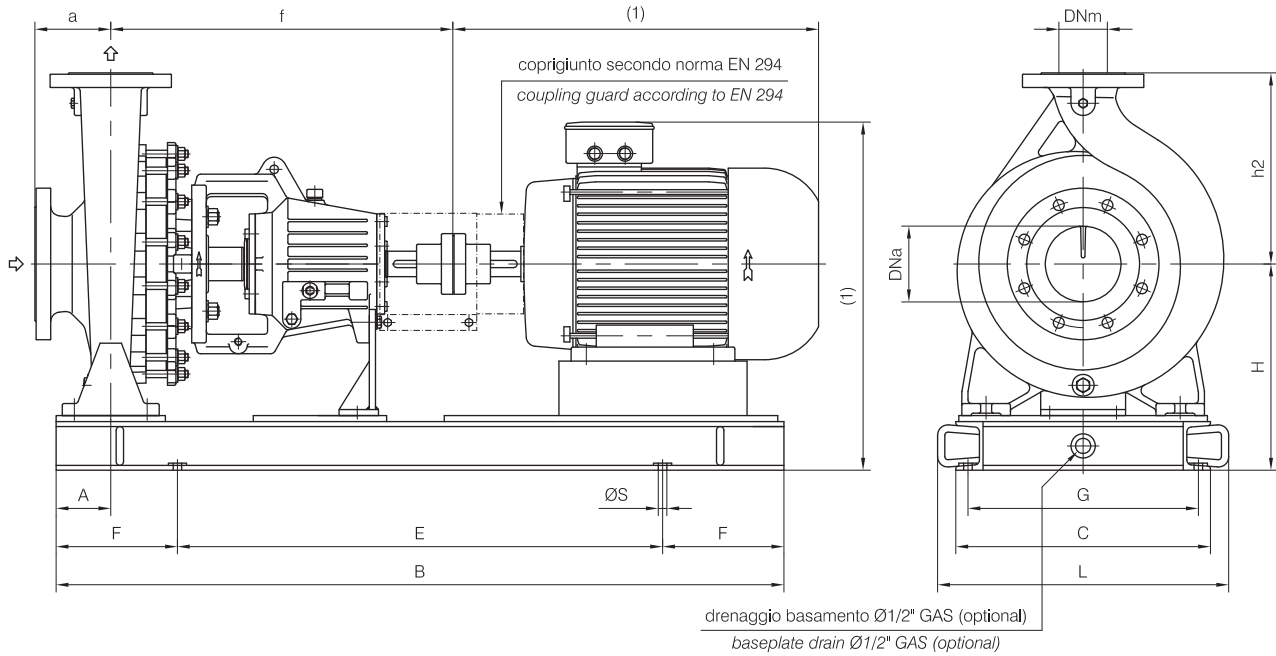
| MOTORI ELETTRICI Electric Motors | | | | | | | | | | | | | |
|----------------------------------|-------------------------|---------|--------------------------|-----|--------------------------|--------|--------------------------------|-------------------------|-----|--------------------------|-----|--------------------------|-----|
| Grandezza Frame size IEC | Giri/min. RPM 960 | | Giri/min. RPM 1450 | | Giri/min. RPM 2900 | | Grandezza Frame size IEC | Giri/min. RPM 960 | | Giri/min. RPM 1450 | | Giri/min. RPM 2900 | |
| | kW | HP | kW | HP | kW | HP | | kW | HP | kW | HP | kW | HP |
| 132 S | 3 | 4 | 5.5 | 7.5 | 5.5-7.5 | 7.5-10 | 225 S | - | - | 37 | 50 | - | - |
| 132 M | 4-5.5 | 5.5-7.5 | 7.5 | 10 | - | - | 225 M | 30 | 40 | 45 | 60 | 45 | 60 |
| 160 M | 7.5 | 10 | 11 | 15 | 11-15 | 15-20 | 250 M | 37 | 50 | 55 | 75 | 55 | 75 |
| 160 L | 11 | 15 | 15 | 20 | 18.5 | 25 | 280 S | 45 | 60 | 75 | 100 | 75 | 100 |
| 180 M | - | - | 18.5 | 25 | 22 | 30 | 280 M | 55 | 75 | 90 | 125 | 90 | 125 |
| 180 L | 15 | 20 | 22 | 30 | | | 315 S | 75 | 100 | 110 | 150 | 110 | 150 |
| 200 L | 18.5-22 | 25-30 | 30 | 40 | 30-37 | 40-50 | 315 M | 90 | 125 | 132 | 180 | 132 | 180 |

Disegno schematico. Dimensioni in mm con tolleranze secondo EN 735-1995.
 Pesì indicativi in Kg, riferiti a pompe in ghisa escluso motore, non impegnativi.
 Schematic drawing. Dimensions in mm with tolerances to EN 735-1995 standards.
 Weights in Kgs, referred to pumps in cast iron without motor, not certified.



Versione **ACCOPIATA**
(BASE-GIUNTO)

COUPLED construction
(BASEPLATE-COUPLING)



(1) Dimensioni in funzione della marca del motore installato.
 (1) Not certified dimensions according to installed motor manufacture.

| Dimensioni costruttive versione Accoppiata Coupled construction dimensions | | | | | | | | | | | | | | | | | | | | |
|--|-------------------------------------|-----|-----|-----|-----|-----|------------------------|-----|-----|----------------------|----|---|------------------------|----|---|------------------------|----|---|----------------|---|
| POMPA TIPO Pump type | Dimensioni pompa Pump dimensions | | | | | | motore 225S/M motor | | | motore 250M motor | | | motore 280S/M motor | | | motore 315S/M motor | | | | |
| | gr. | DNa | DNm | a | f | h2 | A | N° | H | Peso Weight | N° | H | Peso Weight | N° | H | Peso Weight | N° | H | Peso Weight | |
| 50-315 | 3 | 80 | 50 | 125 | 565 | 280 | 75 | C11 | 355 | 207 | - | - | - | - | - | - | - | - | - | - |
| 65-315 | 3 | 100 | 65 | 125 | 565 | 280 | 90 | C11 | 355 | 227 | - | - | - | - | - | - | - | - | - | - |
| 80-315 | 3 | 125 | 80 | 125 | 565 | 315 | 90 | C11 | 380 | 233 | - | - | - | - | - | - | - | - | - | - |

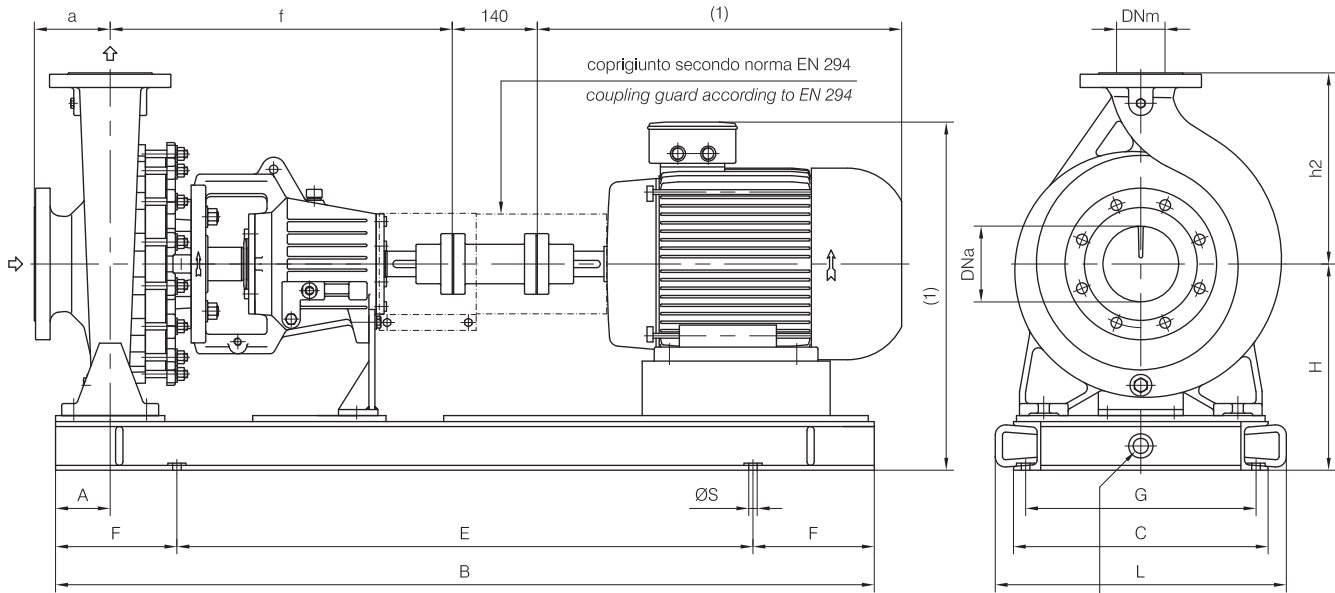
| MOTORI ELETTRICI Electric Motors | | | | | | | | | | | | | |
|----------------------------------|-------------------------|---------|--------------------------|-----|--------------------------|--------|--------------------------------|-------------------------|-----|--------------------------|-----|--------------------------|-----|
| Grandezza Frame size IEC | Giri/min. RPM 960 | | Giri/min. RPM 1450 | | Giri/min. RPM 2900 | | Grandezza Frame size IEC | Giri/min. RPM 960 | | Giri/min. RPM 1450 | | Giri/min. RPM 2900 | |
| | kW | HP | kW | HP | kW | HP | | kW | HP | kW | HP | kW | HP |
| 132 S | 3 | 4 | 5.5 | 7.5 | 5.5-7.5 | 7.5-10 | 225 S | - | - | 37 | 50 | - | - |
| 132 M | 4-5.5 | 5.5-7.5 | 7.5 | 10 | - | - | 225 M | 30 | 40 | 45 | 60 | 45 | 60 |
| 160 M | 7.5 | 10 | 11 | 15 | 11-15 | 15-20 | 250 M | 37 | 50 | 55 | 75 | 55 | 75 |
| 160 L | 11 | 15 | 15 | 20 | 18.5 | 25 | 280 S | 45 | 60 | 75 | 100 | 75 | 100 |
| 180 M | - | - | 18.5 | 25 | 22 | 30 | 280 M | 55 | 75 | 90 | 125 | 90 | 125 |
| 180 L | 15 | 20 | 22 | 30 | | | 315 S | 75 | 100 | 110 | 150 | 110 | 150 |
| 200 L | 18.5-22 | 25-30 | 30 | 40 | 30-37 | 40-50 | 315 M | 90 | 125 | 132 | 180 | 132 | 180 |

Disegno schematico. Dimensioni in mm con tolleranze secondo EN 735-1995.
 Pesì indicativi in Kg, riferiti a pompe in ghisa escluso motore, non impegnativi.
 Schematic drawing. Dimensions in mm with tolerances to EN 735-1995 standards.
 Weights in Kgs, referred to pumps in cast iron without motor, not certified.



Versione **ACCOPIATA**
(BASE-GIUNTO SPAZIATORE)

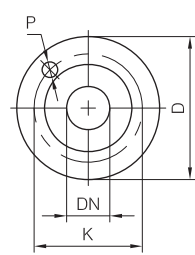
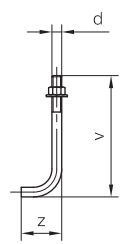
COUPLED construction
(BASEPLATE-SPACER COUPLING)



drenaggio basamento Ø1/2" GAS (optional)
 baseplate drain Ø1/2" GAS (optional)

| Dimensioni Basamento Baseplate dimensions | | | | | | | | |
|--|------|-----|------|-----|-----|-----|----|---------------|
| N° | B | C | E | F | L | G | ØS | N° fori holes |
| C05 | 1200 | 420 | 800 | 200 | 480 | 380 | 18 | 4 |
| C11 | 1350 | 500 | 950 | 200 | 570 | 452 | 18 | 4 |
| C13 | 1650 | 640 | 1050 | 300 | 710 | 592 | 18 | 4 |

| Bulloni di fondazione (optional) Foundation bolts (optional) | | | |
|---|-----|----|--|
| d | v | z | |
| M14 | 280 | 50 | |
| M16 | 350 | 60 | |



| Dimensioni flange Flanges dimensions | | | | |
|---|-----|-----|----|---------------|
| DNa-DNm | D | K | P | N° fori holes |
| 50 | 165 | 125 | 18 | 4 |
| 65 | 185 | 145 | 18 | 4 |
| 80 | 200 | 160 | 18 | 8 |
| 100 | 220 | 180 | 18 | 8 |
| 125 | 250 | 210 | 18 | 8 |

FLANGE: Dimensioni secondo UNI 2223 - 2229 PN16
 FLANGES: Dimensions to UNI 2223-2229 NP16 standards

(1) Dimensioni in funzione della marca del motore installato.
 (1) Not certified dimensions according to installed motor manufacture.

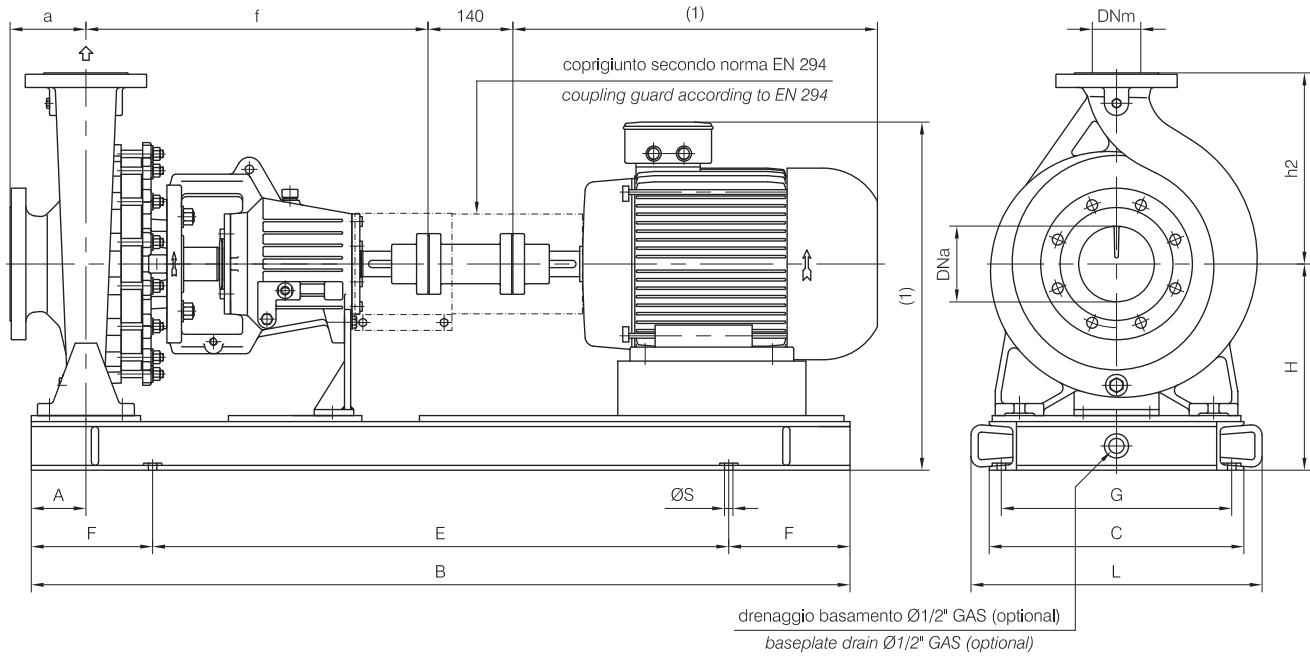
| Dimensioni costruttive versione Accoppiata Coupled construction dimensions | | | | | | | | | | | | | | | | | | | |
|--|-------------------------------------|-----|-----|-----|-----|-----|----|---------------------|-----|-------------|------------------------|-----|-------------|------------------------|-----|-------------|----------------------|-----|-------------|
| POMPA TIPO Pump type | Dimensioni pompa Pump dimensions | | | | | | | motore 132 motor | | | motore 160M/L motor | | | motore 180M/L motor | | | motore 200L motor | | |
| | gr. | DNa | DNm | a | f | h2 | A | N° | H | Peso Weight | N° | H | Peso Weight | N° | H | Peso Weight | N° | H | Peso Weight |
| 50-315 | 3 | 80 | 50 | 125 | 565 | 280 | 75 | C05 | 315 | 182 | C11 | 355 | 205 | C11 | 355 | 205 | C13 | 358 | 269 |
| 65-315 | 3 | 100 | 65 | 125 | 565 | 280 | 90 | C05 | 315 | 202 | C11 | 355 | 225 | C11 | 355 | 225 | C13 | 358 | 289 |
| 80-315 | 3 | 125 | 80 | 125 | 565 | 315 | 90 | C05 | 340 | 208 | C11 | 380 | 236 | C11 | 380 | 226 | C13 | 383 | 290 |

Disegno schematico. Dimensioni in mm con tolleranze secondo EN 735-1995.
 Pesì indicativi in Kg, riferiti a pompe in ghisa escluso motore, non impegnativi.
 Schematic drawing. Dimensions in mm with tolerances to EN 735-1995 standards.
 Weights in Kgs, referred to pumps in cast iron without motor, not certified.



Versione **ACCOPIATA**
(BASE-GIUNTO SPAZIATORE)

COUPLED construction
(BASEPLATE-SPACER COUPLING)



(1) Dimensioni in funzione della marca del motore installato.
 (1) Not certified dimensions according to installed motor manufacture.

| Dimensioni costruttive versione Accoppiata Coupled construction dimensions | | | | | | | | | | | | | | | | | | | | |
|--|-------------------------------------|-----|-----|-----|-----|-----|------------------------|-----|-----|----------------------|----|---|------------------------|----|---|------------------------|----|---|----------------|---|
| POMPA TIPO Pump type | Dimensioni pompa Pump dimensions | | | | | | motore 225S/M motor | | | motore 250M motor | | | motore 280S/M motor | | | motore 315S/M motor | | | | |
| | gr. | DNa | DNm | a | f | h2 | A | N° | H | Peso Weight | N° | H | Peso Weight | N° | H | Peso Weight | N° | H | Peso Weight | |
| 50-315 | 3 | 80 | 50 | 125 | 565 | 280 | 75 | C13 | 358 | 269 | - | - | - | - | - | - | - | - | - | - |
| 65-315 | 3 | 100 | 65 | 125 | 565 | 280 | 90 | C13 | 358 | 289 | - | - | - | - | - | - | - | - | - | - |
| 80-315 | 3 | 125 | 80 | 125 | 565 | 315 | 90 | C13 | 383 | 295 | - | - | - | - | - | - | - | - | - | - |

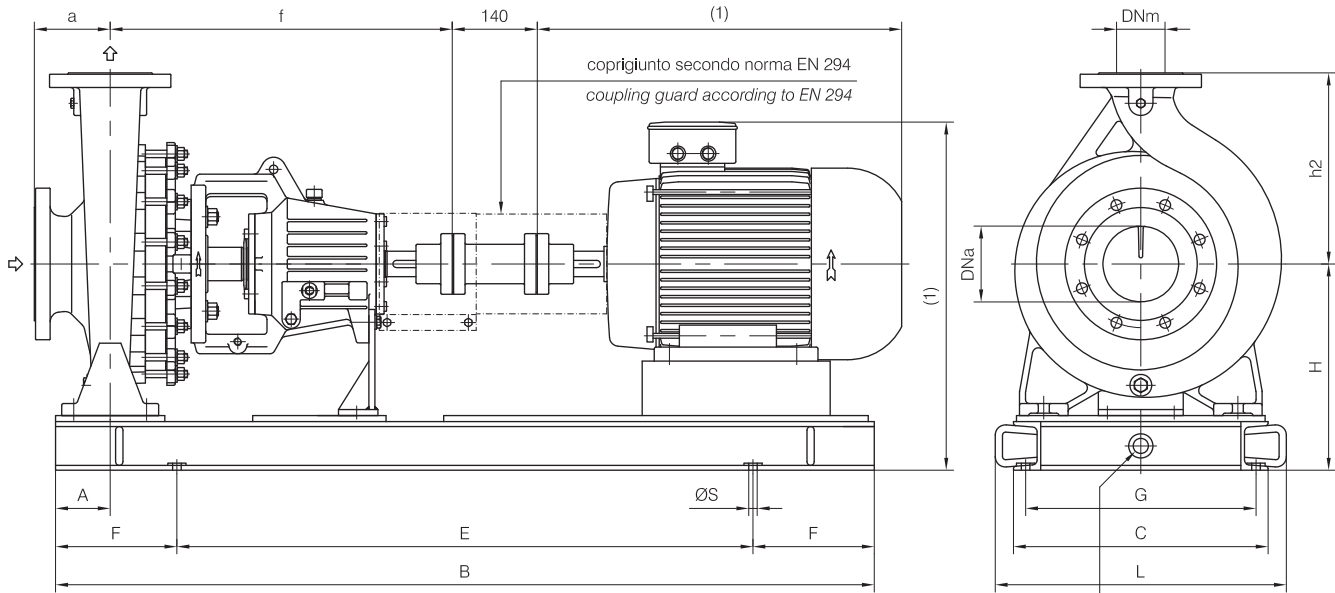
| MOTORI ELETTRICI Electric Motors | | | | | | | | | | | | | |
|----------------------------------|-------------------------|---------|--------------------------|-----|--------------------------|--------|--------------------------------|-------------------------|-----|--------------------------|-----|--------------------------|-----|
| Grandezza Frame size IEC | Giri/min. RPM 960 | | Giri/min. RPM 1450 | | Giri/min. RPM 2900 | | Grandezza Frame size IEC | Giri/min. RPM 960 | | Giri/min. RPM 1450 | | Giri/min. RPM 2900 | |
| | kW | HP | kW | HP | kW | HP | | kW | HP | kW | HP | kW | HP |
| 132 S | 3 | 4 | 5.5 | 7.5 | 5.5-7.5 | 7.5-10 | 225 S | - | - | 37 | 50 | - | - |
| 132 M | 4-5.5 | 5.5-7.5 | 7.5 | 10 | - | - | 225 M | 30 | 40 | 45 | 60 | 45 | 60 |
| 160 M | 7.5 | 10 | 11 | 15 | 11-15 | 15-20 | 250 M | 37 | 50 | 55 | 75 | 55 | 75 |
| 160 L | 11 | 15 | 15 | 20 | 18.5 | 25 | 280 S | 45 | 60 | 75 | 100 | 75 | 100 |
| 180 M | - | - | 18.5 | 25 | 22 | 30 | 280 M | 55 | 75 | 90 | 125 | 90 | 125 |
| 180 L | 15 | 20 | 22 | 30 | | | 315 S | 75 | 100 | 110 | 150 | 110 | 150 |
| 200 L | 18.5-22 | 25-30 | 30 | 40 | 30-37 | 40-50 | 315 M | 90 | 125 | 132 | 180 | 132 | 180 |

Disegno schematico. Dimensioni in mm con tolleranze secondo EN 735-1995.
 Pesì indicativi in Kg, riferiti a pompe in ghisa escluso motore, non impegnativi.
 Schematic drawing. Dimensions in mm with tolerances to EN 735-1995 standards.
 Weights in Kgs, referred to pumps in cast iron without motor, not certified.



Versione **ACCOPIATA**
(BASE-GIUNTO SPAZIATORE)

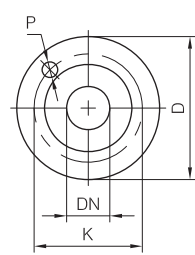
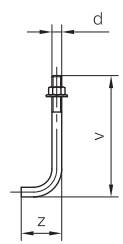
COUPLED construction
(BASEPLATE-SPACER COUPLING)



drenaggio basamento Ø1/2" GAS (optional)
 baseplate drain Ø1/2" GAS (optional)

| Dimensioni Basamento Baseplate dimensions | | | | | | | | |
|--|------|-----|------|-----|-----|-----|----|---------------|
| N° | B | C | E | F | L | G | ØS | N° fori holes |
| C05 | 1200 | 420 | 800 | 200 | 480 | 380 | 18 | 4 |
| C11 | 1350 | 500 | 950 | 200 | 570 | 452 | 18 | 4 |
| C13 | 1650 | 640 | 1050 | 300 | 710 | 592 | 18 | 4 |

| Bulloni di fondazione (optional) Foundation bolts (optional) | | | |
|---|-----|----|--|
| d | v | z | |
| M14 | 280 | 50 | |
| M16 | 350 | 60 | |



| Dimensioni flange Flanges dimensions | | | | |
|---|-----|-----|----|---------------|
| DNa-DNm | D | K | P | N° fori holes |
| 50 | 165 | 125 | 18 | 4 |
| 65 | 185 | 145 | 18 | 4 |
| 80 | 200 | 160 | 18 | 8 |
| 100 | 220 | 180 | 18 | 8 |
| 125 | 250 | 210 | 18 | 8 |

FLANGE: Dimensioni secondo UNI 2223 - 2229 PN16
 FLANGES: Dimensions to UNI 2223-2229 NP16 standards

(1) Dimensioni in funzione della marca del motore installato.
 (1) Not certified dimensions according to installed motor manufacture.

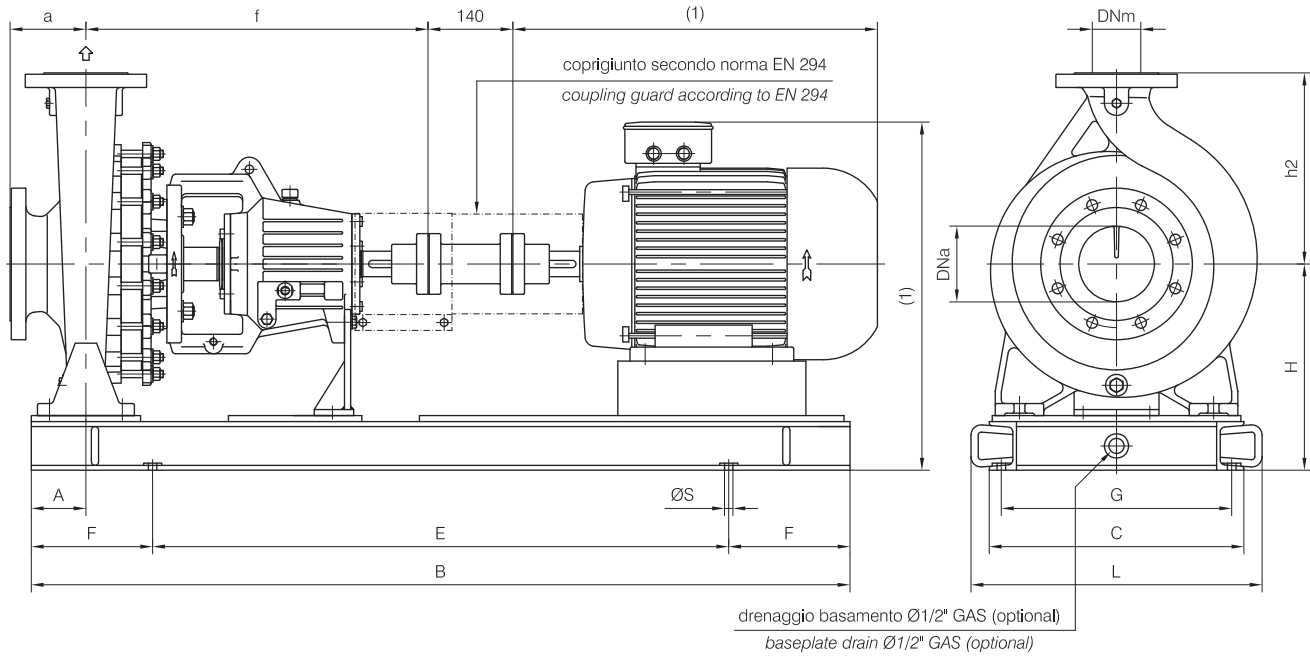
| Dimensioni costruttive versione Accoppiata Coupled construction dimensions | | | | | | | | | | | | | | | | | | | |
|--|-------------------------------------|-----|-----|-----|-----|-----|----|---------------------|-----|-------------|------------------------|-----|-------------|------------------------|-----|-------------|----------------------|-----|-------------|
| POMPA TIPO Pump type | Dimensioni pompa Pump dimensions | | | | | | | motore 132 motor | | | motore 160M/L motor | | | motore 180M/L motor | | | motore 200L motor | | |
| | gr. | DNa | DNm | a | f | h2 | A | N° | H | Peso Weight | N° | H | Peso Weight | N° | H | Peso Weight | N° | H | Peso Weight |
| 50-315 | 3 | 80 | 50 | 125 | 565 | 280 | 75 | C05 | 315 | 182 | C11 | 355 | 205 | C11 | 355 | 205 | C13 | 358 | 269 |
| 65-315 | 3 | 100 | 65 | 125 | 565 | 280 | 90 | C05 | 315 | 202 | C11 | 355 | 225 | C11 | 355 | 225 | C13 | 358 | 289 |
| 80-315 | 3 | 125 | 80 | 125 | 565 | 315 | 90 | C05 | 340 | 208 | C11 | 380 | 236 | C11 | 380 | 226 | C13 | 383 | 290 |

Disegno schematico. Dimensioni in mm con tolleranze secondo EN 735-1995.
 Pesì indicativi in Kg, riferiti a pompe in ghisa escluso motore, non impegnativi.
 Schematic drawing. Dimensions in mm with tolerances to EN 735-1995 standards.
 Weights in Kgs, referred to pumps in cast iron without motor, not certified.



Versione **ACCOPIATA**
(BASE-GIUNTO SPAZIATORE)

COUPLED construction
(BASEPLATE-SPACER COUPLING)



(1) Dimensioni in funzione della marca del motore installato.
 (1) Not certified dimensions according to installed motor manufacture.

| Dimensioni costruttive versione Accoppiata Coupled construction dimensions | | | | | | | | | | | | | | | | | | | | |
|--|-------------------------------------|-----|-----|-----|-----|-----|------------------------|-----|-----|----------------------|----|---|------------------------|----|---|------------------------|----|---|----------------|---|
| POMPA TIPO Pump type | Dimensioni pompa Pump dimensions | | | | | | motore 225S/M motor | | | motore 250M motor | | | motore 280S/M motor | | | motore 315S/M motor | | | | |
| | gr. | DNa | DNm | a | f | h2 | A | N° | H | Peso Weight | N° | H | Peso Weight | N° | H | Peso Weight | N° | H | Peso Weight | |
| 50-315 | 3 | 80 | 50 | 125 | 565 | 280 | 75 | C13 | 358 | 269 | - | - | - | - | - | - | - | - | - | - |
| 65-315 | 3 | 100 | 65 | 125 | 565 | 280 | 90 | C13 | 358 | 289 | - | - | - | - | - | - | - | - | - | - |
| 80-315 | 3 | 125 | 80 | 125 | 565 | 315 | 90 | C13 | 383 | 295 | - | - | - | - | - | - | - | - | - | - |

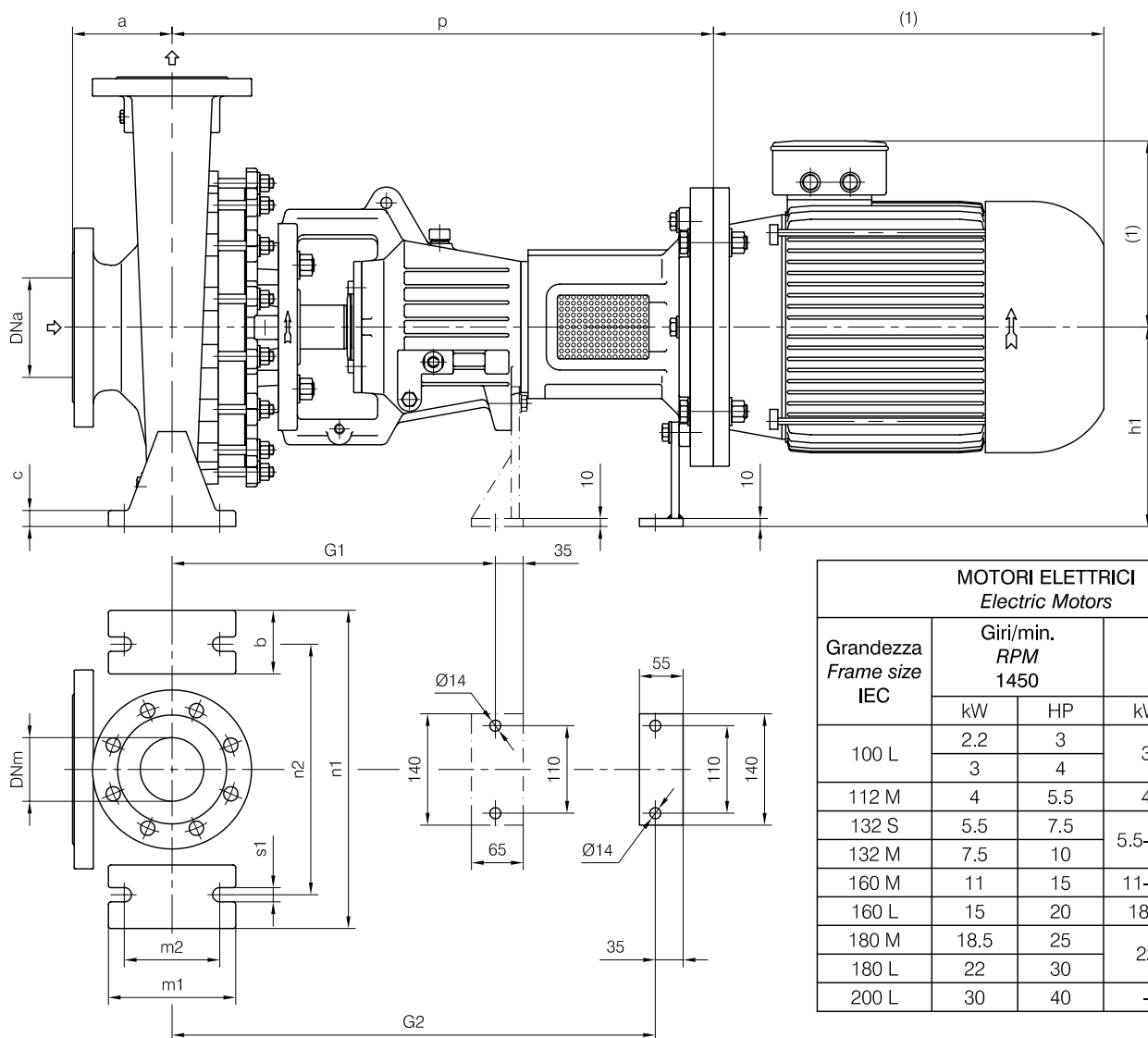
| MOTORI ELETTRICI Electric Motors | | | | | | | | | | | | | |
|----------------------------------|-------------------------|---------|--------------------------|-----|--------------------------|--------|--------------------------------|-------------------------|-----|--------------------------|-----|--------------------------|-----|
| Grandezza Frame size IEC | Giri/min. RPM 960 | | Giri/min. RPM 1450 | | Giri/min. RPM 2900 | | Grandezza Frame size IEC | Giri/min. RPM 960 | | Giri/min. RPM 1450 | | Giri/min. RPM 2900 | |
| | kW | HP | kW | HP | kW | HP | | kW | HP | kW | HP | kW | HP |
| 132 S | 3 | 4 | 5.5 | 7.5 | 5.5-7.5 | 7.5-10 | 225 S | - | - | 37 | 50 | - | - |
| 132 M | 4-5.5 | 5.5-7.5 | 7.5 | 10 | - | - | 225 M | 30 | 40 | 45 | 60 | 45 | 60 |
| 160 M | 7.5 | 10 | 11 | 15 | 11-15 | 15-20 | 250 M | 37 | 50 | 55 | 75 | 55 | 75 |
| 160 L | 11 | 15 | 15 | 20 | 18.5 | 25 | 280 S | 45 | 60 | 75 | 100 | 75 | 100 |
| 180 M | - | - | 18.5 | 25 | 22 | 30 | 280 M | 55 | 75 | 90 | 125 | 90 | 125 |
| 180 L | 15 | 20 | 22 | 30 | | | 315 S | 75 | 100 | 110 | 150 | 110 | 150 |
| 200 L | 18.5-22 | 25-30 | 30 | 40 | 30-37 | 40-50 | 315 M | 90 | 125 | 132 | 180 | 132 | 180 |

Disegno schematico. Dimensioni in mm con tolleranze secondo EN 735-1995.
 Pesì indicativi in Kg, riferiti a pompe in ghisa escluso motore, non impegnativi.
 Schematic drawing. Dimensions in mm with tolerances to EN 735-1995 standards.
 Weights in Kgs, referred to pumps in cast iron without motor, not certified.



Versione **MONOBLOCCO**

CLOSE-COUPLED construction



| MOTORI ELETTRICI Electric Motors | | | | |
|-------------------------------------|--------------------------|-----|--------------------------|--------|
| Grandezza Frame size IEC | Giri/min. RPM 1450 | | Giri/min. RPM 2900 | |
| | kW | HP | kW | HP |
| 100 L | 2.2 | 3 | 3 | 4 |
| | 3 | 4 | | |
| 112 M | 4 | 5.5 | 4 | 5.5 |
| 132 S | 5.5 | 7.5 | 5.5-7.5 | 7.5-10 |
| 132 M | 7.5 | 10 | | |
| 160 M | 11 | 15 | 11-15 | 15-20 |
| 160 L | 15 | 20 | 18.5 | 25 |
| 180 M | 18.5 | 25 | 22 | 30 |
| 180 L | 22 | 30 | | |
| 200 L | 30 | 40 | - | - |

(1) Dimensioni in funzione della marca del motore installato.
 (1) Not certified dimensions according to installed motor manufacture.

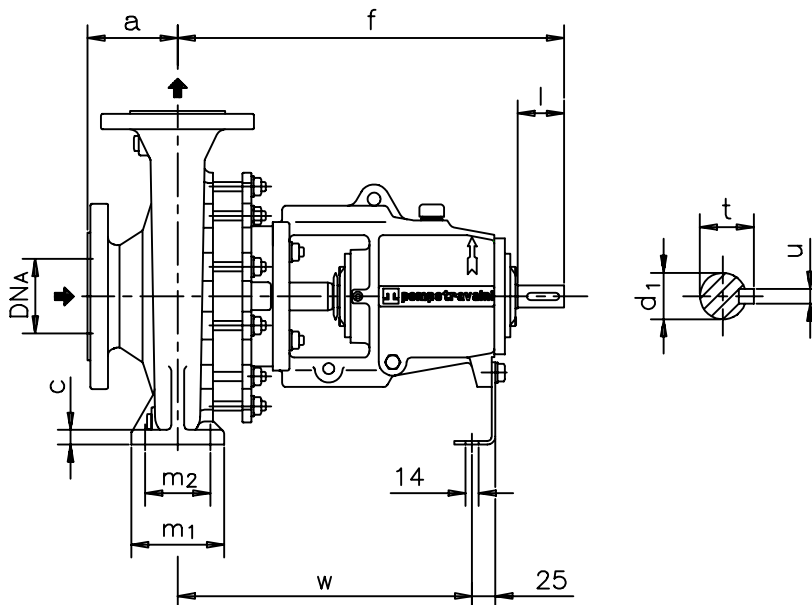
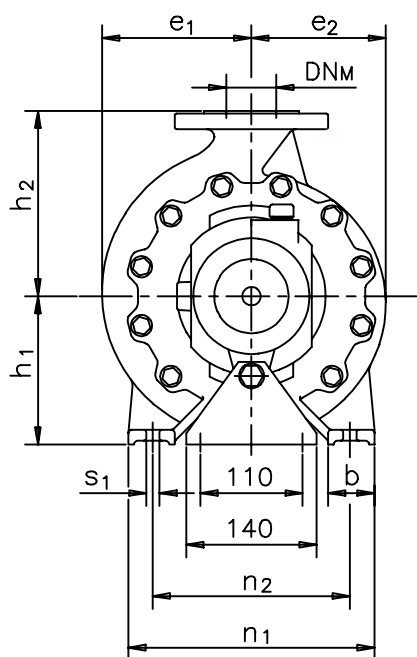
| Dimensioni costruttive Monoblocco Close-coupled construction dimensions | | | | | | | | | | | | | |
|---|----------------------|-----|-----|-------------|------------------|-----|-------------|----------------------|-----|-------------|------------------|-----|-------------|
| POMPA TIPO Pump type | motore motor 100-112 | | | | motore motor 132 | | | motore motor 160-180 | | | motore motor 200 | | |
| | gr. | p | G1 | Peso Weight | p | G2 | Peso Weight | p | G2 | Peso Weight | p | G2 | Peso Weight |
| 50-315 | 3 | 619 | 405 | 131 | 640 | 608 | 134 | 669 | 608 | 151 | - | - | - |
| 65-315 | 3 | 631 | 405 | 151 | 652 | 608 | 154 | 681 | 608 | 171 | 684 | 608 | 177 |
| 80-315 | 3 | 631 | 405 | 153 | 652 | 608 | 156 | 681 | 608 | 173 | 684 | 608 | 179 |

Disegno schematico. Dimensioni in mm con tolleranze secondo EN 735-1995.
 Pesì indicativi in Kg, riferiti a pompe in ghisa escluso motore, non impegnativi.
 Schematic drawing. Dimensions in mm with tolerances to EN 735-1995 standards.
 Weights in Kgs, referred to pumps in cast iron without motor, not certified.



Versione ad **ASSE NUDO**

BARESHAF construction



| Pompa tipo Pump type | Versione ad ASSE NUDO | | | | | | | | | | | | | | | | | | | | Peso Weight |
|-------------------------|------------------------------|-----------------|-----|-----|----------------|----------------|----|----|----------------|----------------|----------------|----------------|----------------|-----|----------------|----|----|----|----------------|----------------|----------------|
| | BARESHAF construction | | | | | | | | | | | | | | | | | | | | |
| | DN _A | DN _M | a | f | h ₁ | h ₂ | b | c | m ₁ | m ₂ | n ₁ | n ₂ | s ₁ | w | d ₁ | l | t | u | e ₁ | e ₂ | |
| 32-125 | 50 | 32 | 80 | 405 | 112 | 140 | 50 | 15 | 100 | 70 | 190 | 140 | 14 | 305 | 24 | 50 | 27 | 8 | 105 | 91 | 36 |
| 32-160 | 50 | 32 | 80 | 411 | 132 | 160 | 50 | 16 | 100 | 70 | 240 | 190 | 14 | 311 | 24 | 50 | 27 | 8 | 125 | 110 | 42 |
| 32-200 | 50 | 32 | 80 | 411 | 160 | 180 | 50 | 16 | 100 | 70 | 240 | 190 | 14 | 311 | 24 | 50 | 27 | 8 | 140 | 130 | 46 |
| 40-125 | 65 | 40 | 80 | 405 | 112 | 140 | 50 | 15 | 100 | 70 | 210 | 160 | 14 | 305 | 24 | 50 | 27 | 8 | 115 | 100 | 38 |
| 40-160 | 65 | 40 | 80 | 411 | 132 | 160 | 50 | 16 | 100 | 70 | 240 | 190 | 14 | 311 | 24 | 50 | 27 | 8 | 130 | 115 | 42 |
| 40-200 | 65 | 40 | 100 | 411 | 160 | 180 | 50 | 16 | 100 | 70 | 265 | 212 | 14 | 311 | 24 | 50 | 27 | 8 | 146 | 135 | 48 |
| 40-250 | 65 | 40 | 100 | 533 | 180 | 225 | 65 | 18 | 125 | 95 | 320 | 250 | 14 | 403 | 32 | 80 | 35 | 10 | 176 | 163 | 85 |
| 50-125 | 80 | 50 | 100 | 405 | 132 | 160 | 50 | 16 | 100 | 70 | 240 | 190 | 14 | 305 | 24 | 50 | 27 | 8 | 130 | 110 | 42 |
| 50-160 | 80 | 50 | 100 | 411 | 160 | 180 | 50 | 16 | 100 | 70 | 265 | 212 | 14 | 311 | 24 | 50 | 27 | 8 | 147 | 125 | 47 |
| 50-200 | 80 | 50 | 100 | 411 | 160 | 200 | 50 | 16 | 100 | 70 | 265 | 212 | 14 | 311 | 24 | 50 | 27 | 8 | 161 | 146 | 49 |
| 50-250 | 80 | 50 | 125 | 533 | 180 | 225 | 65 | 18 | 125 | 95 | 320 | 250 | 14 | 403 | 32 | 80 | 35 | 10 | 183 | 169 | 90 |
| 65-160 | 100 | 65 | 100 | 526 | 160 | 200 | 65 | 16 | 125 | 95 | 280 | 212 | 14 | 396 | 32 | 80 | 35 | 10 | 160 | 130 | 75 |
| 65-200 | 100 | 65 | 100 | 526 | 180 | 225 | 65 | 18 | 125 | 95 | 320 | 250 | 14 | 396 | 32 | 80 | 35 | 10 | 174 | 152 | 82 |
| 65-250 | 100 | 65 | 125 | 539 | 200 | 250 | 80 | 20 | 160 | 120 | 360 | 280 | 18 | 409 | 32 | 80 | 35 | 10 | 195 | 175 | 90 |
| 80-160 | 125 | 80 | 125 | 526 | 180 | 225 | 65 | 16 | 125 | 95 | 320 | 250 | 14 | 396 | 32 | 80 | 35 | 10 | 186 | 142 | 80 |
| 80-200 | 125 | 80 | 125 | 526 | 180 | 250 | 65 | 18 | 125 | 95 | 345 | 280 | 14 | 396 | 32 | 80 | 35 | 10 | 188 | 158 | 95 |
| 80-250 | 125 | 80 | 125 | 539 | 225 | 280 | 80 | 20 | 160 | 120 | 400 | 315 | 18 | 409 | 32 | 80 | 35 | 10 | 225 | 185 | 112 |
| 100-200 | 125 | 100 | 125 | 526 | 200 | 280 | 80 | 20 | 160 | 120 | 360 | 280 | 18 | 396 | 32 | 80 | 35 | 10 | 211 | 170 | 112 |

Disegno schematico. Dimensioni in mm con tolleranze secondo EN 735-1995. Pesi indicativi in Kg, riferiti a pompe in esecuzione "GS" ghisa sferoidale escluso motore, non impegnativi.
 Schematic drawing. Dimensions in mm with tolerances to EN 735-1995 standards. Weights in Kgs, referred to pump in ductile iron "GS" construction without motor, not binding.

RIF. - Ref.: F.P./C.T.

SOSTITUISCE - Replaces: 3900.100.201.01.A

DATA - Date: SETTEMBRE 2004 - September 2004

N°.: 3900.100.201.02.A

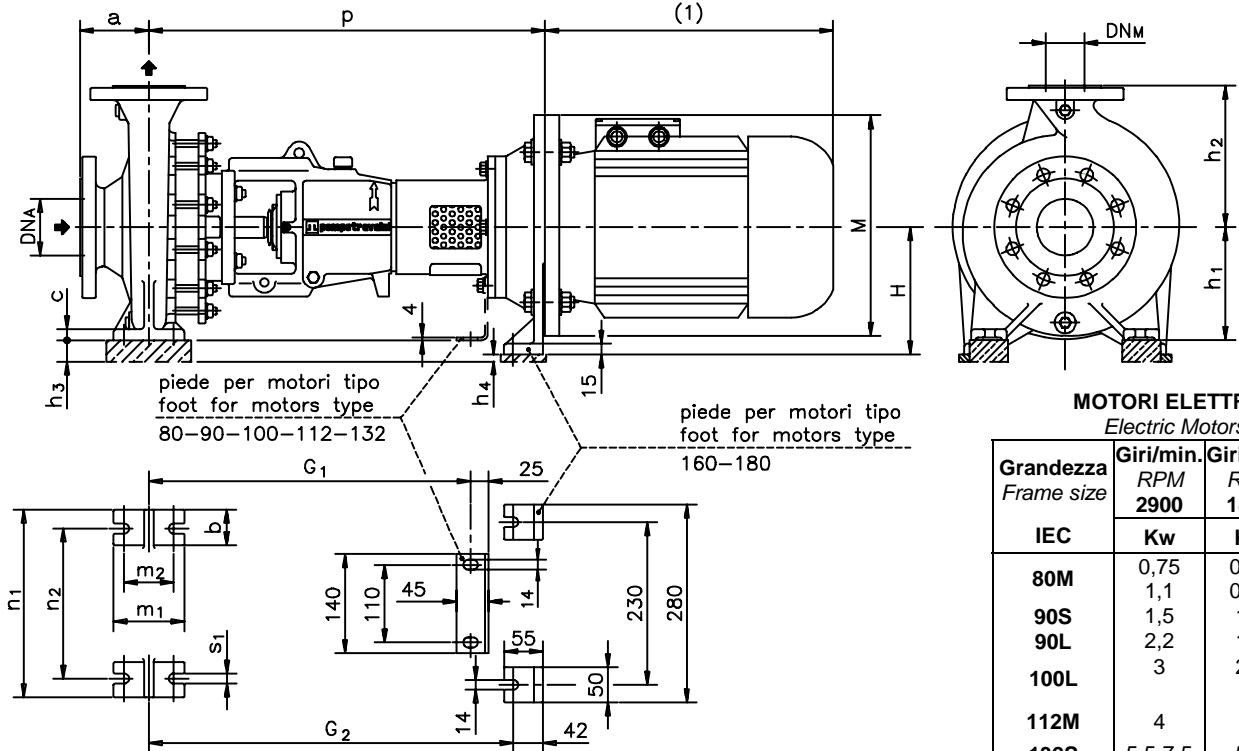
DIMENSIONI D'INGOMBRO
Overall dimensions
POMPE CENTRIFUGHE MONOSTADIO
Monostage centrifugal pumps
SERIE
Series **TCT gr. 1-2** pag.2/2



**TRAVAINI
PUMPS USA**
Liquid Ring & Rotary Vane Vacuum Pumps and Systems

200 Newsome Drive
Yorktown, VA 23693
1-800-535-4243
www.Travaini.com

Versione **MONOBLOCCO / M** **CLOSE - COUPLED / M** construction



MOTORI ELETTRICI
Electric Motors

| Grandezza Frame size | Giri/min. RPM | | M |
|-------------------------|---------------|------|-----|
| | 2900 | 1450 | |
| IEC | Kw | | |
| 80M | 0,75 | 0,55 | 200 |
| | 1,1 | 0,75 | |
| 90S | 1,5 | 1,1 | 200 |
| 90L | 2,2 | 1,5 | 250 |
| 100L | 3 | 2,2 | |
| | | 3 | |
| 112M | 4 | 4 | 250 |
| 132S | 5,5-7,5 | 5,5 | 300 |
| 132M | | 7,5 | |
| 160M | 11-15 | 11 | 350 |
| 160L | 18,5 | 15 | |
| 180M | 22 | 18,5 | 350 |
| 180L | | 22 | |

| Pompa tipo Pump type | Versione MONOBLOCCO CLOSE-COUPLED construction | | | | | | | | | | | | | | | | |
|-------------------------|--|----------------|--------------|-----|----------------|----------------|----------------|-----|----------------|----------------|-------------|-----|----------------|----------------|----------------|----------------|-------------|
| | motore motor | | 80-90 | | motore motor | | 100-112 | | motore motor | | 132 | | motore motor | | 160-180 | | |
| | p | G ₁ | Peso Weight | p | G ₁ | h ₃ | Peso Weight | p | G ₁ | h ₃ | Peso Weight | H | h ₃ | h ₄ | p | G ₂ | Peso Weight |
| 32-125 | 466 | 430 | 42 | 491 | 430 | 20 | 46 | 496 | 430 | 48 | 49 | 180 | 68 | - | 536 | 497 | 55 |
| 32-160 | 472 | 436 | 48 | 497 | 436 | - | 52 | 502 | 436 | 28 | 55 | 180 | 48 | - | 542 | 503 | 61 |
| 32-200 | 472 | 436 | 52 | 497 | 436 | - | 56 | 502 | 436 | - | 59 | 180 | 20 | - | 542 | 503 | 65 |
| 40-125 | 466 | 430 | 44 | 491 | 430 | 20 | 48 | 496 | 430 | 48 | 51 | 180 | 68 | - | 536 | 497 | 57 |
| 40-160 | 472 | 436 | 48 | 497 | 436 | - | 52 | 502 | 436 | 28 | 55 | 180 | 48 | - | 542 | 503 | 61 |
| 40-200 | 472 | 436 | 54 | 497 | 436 | - | 58 | 502 | 436 | - | 61 | 180 | 20 | - | 542 | 503 | 67 |
| 40-250 | | | | 613 | 573 | - | 92 | 634 | 595 | - | 98 | 200 | 20 | - | 663 | 618 | 108 |
| 50-125 | 466 | 430 | 48 | 491 | 430 | - | 52 | 496 | 430 | 28 | 55 | 180 | 48 | - | 536 | 497 | 61 |
| 50-160 | 472 | 436 | 53 | 497 | 436 | - | 57 | 502 | 436 | - | 60 | 180 | 20 | - | 542 | 503 | 66 |
| 50-200 | 472 | 436 | 55 | 497 | 436 | - | 59 | 502 | 436 | - | 62 | 180 | 20 | - | 542 | 503 | 68 |
| 50-250 | | | | 613 | 573 | - | 100 | 634 | 595 | - | 103 | 200 | 20 | - | 663 | 618 | 113 |
| 65-160 | | | | 606 | 566 | - | 85 | 627 | 588 | - | 88 | 200 | 40 | - | 656 | 611 | 98 |
| 65-200 | | | | 606 | 566 | - | 92 | 627 | 588 | - | 95 | 200 | 20 | - | 656 | 611 | 105 |
| 65-250 | | | | 619 | 579 | - | 100 | 640 | 601 | - | 103 | 200 | - | - | 669 | 624 | 113 |
| 80-160 | | | | 606 | 566 | - | 90 | 627 | 588 | - | 93 | 200 | 20 | - | 656 | 611 | 103 |
| 80-200 | | | | 606 | 566 | - | 105 | 627 | 588 | - | 108 | 200 | 20 | - | 656 | 611 | 118 |
| 80-250 | | | | 619 | 579 | - | 122 | 640 | 601 | - | 125 | 200 | - | 25 | 669 | 624 | 135 |
| 100-200 | | | | 606 | 566 | - | 122 | 627 | 588 | - | 125 | 200 | - | - | 656 | 611 | 135 |

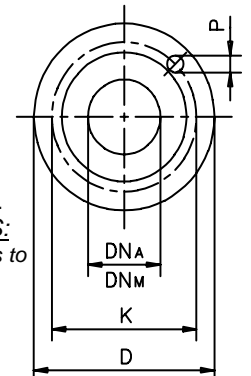
DIMENSIONI FLANGE
Flanges dimensions

| DN _A -DN _M | D | K | P | N° fori holes |
|----------------------------------|-----|-----|----|---------------|
| 25 | 115 | 85 | 14 | 4 |
| 32 | 140 | 100 | 18 | 4 |
| 40 | 150 | 110 | 18 | 4 |
| 50 | 165 | 125 | 18 | 4 |
| 65 | 185 | 145 | 18 | 4 |
| 80 | 200 | 160 | 18 | 8 |
| 100 | 220 | 180 | 18 | 8 |
| 125 | 250 | 210 | 18 | 8 |

FLANGE:

Dimensioni secondo UNI 2223 - 2229 PN16.

FLANGES:
Dimensions to UNI 2223 - 2229 NP16 standards



(1) Dimensioni in funzione della marca del motore elettrico installato / Not binding dimensions according to installed motor supplier

(h₃) (h₄) Spessori per allineamento motore - pompa esclusi dalla fornitura / Spacers for motor - pump alignment are not supplied by pompetravaini

RIF. - Ref.: F.P./C.T.

SOSTITUISCE - Replaces: 3900.100.201.01.B

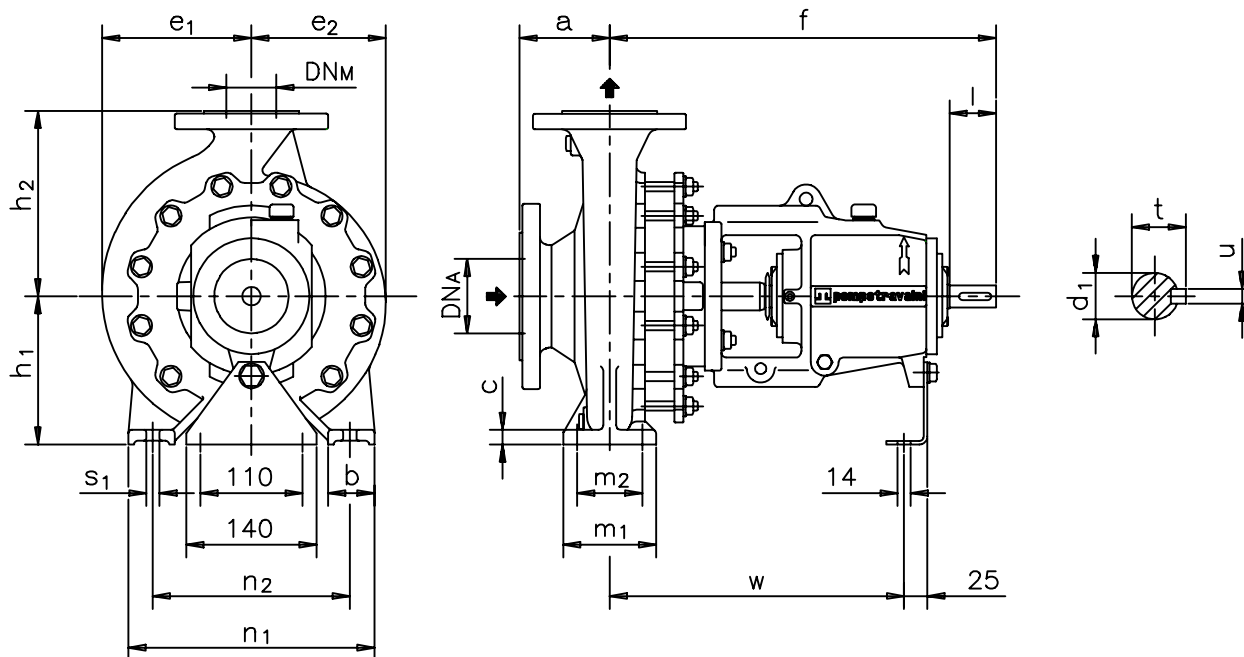
DATA - Date: SETTEMBRE 2004 - September 2004

N°.: 3900.100.201.02.B



Versione ad **ASSE NUDO**

BARESHAF construction



| Pompa tipo Pump type | Versione ad ASSE NUDO | | | | | | | | | | | | | | | | | | | | Peso Weight |
|-------------------------|------------------------------|-----------------|-----|-----|----------------|----------------|----|----|----------------|----------------|----------------|----------------|----------------|-----|----------------|----|----|----|----------------|----------------|----------------|
| | BARESHAF construction | | | | | | | | | | | | | | | | | | | | |
| | DN _A | DN _M | a | f | h ₁ | h ₂ | b | c | m ₁ | m ₂ | n ₁ | n ₂ | s ₁ | w | d ₁ | l | t | u | e ₁ | e ₂ | |
| 32-125 | 50 | 32 | 80 | 405 | 112 | 140 | 50 | 15 | 100 | 70 | 190 | 140 | 14 | 305 | 24 | 50 | 27 | 8 | 105 | 91 | 36 |
| 32-160 | 50 | 32 | 80 | 411 | 132 | 160 | 50 | 16 | 100 | 70 | 240 | 190 | 14 | 311 | 24 | 50 | 27 | 8 | 125 | 110 | 42 |
| 32-200 | 50 | 32 | 80 | 411 | 160 | 180 | 50 | 16 | 100 | 70 | 240 | 190 | 14 | 311 | 24 | 50 | 27 | 8 | 140 | 130 | 46 |
| 40-125 | 65 | 40 | 80 | 405 | 112 | 140 | 50 | 15 | 100 | 70 | 210 | 160 | 14 | 305 | 24 | 50 | 27 | 8 | 115 | 100 | 38 |
| 40-160 | 65 | 40 | 80 | 411 | 132 | 160 | 50 | 16 | 100 | 70 | 240 | 190 | 14 | 311 | 24 | 50 | 27 | 8 | 130 | 115 | 42 |
| 40-200 | 65 | 40 | 100 | 411 | 160 | 180 | 50 | 16 | 100 | 70 | 265 | 212 | 14 | 311 | 24 | 50 | 27 | 8 | 146 | 135 | 48 |
| 40-250 | 65 | 40 | 100 | 533 | 180 | 225 | 65 | 18 | 125 | 95 | 320 | 250 | 14 | 403 | 32 | 80 | 35 | 10 | 176 | 163 | 85 |
| 50-125 | 80 | 50 | 100 | 405 | 132 | 160 | 50 | 16 | 100 | 70 | 240 | 190 | 14 | 305 | 24 | 50 | 27 | 8 | 130 | 110 | 42 |
| 50-160 | 80 | 50 | 100 | 411 | 160 | 180 | 50 | 16 | 100 | 70 | 265 | 212 | 14 | 311 | 24 | 50 | 27 | 8 | 147 | 125 | 47 |
| 50-200 | 80 | 50 | 100 | 411 | 160 | 200 | 50 | 16 | 100 | 70 | 265 | 212 | 14 | 311 | 24 | 50 | 27 | 8 | 161 | 146 | 49 |
| 50-250 | 80 | 50 | 125 | 533 | 180 | 225 | 65 | 18 | 125 | 95 | 320 | 250 | 14 | 403 | 32 | 80 | 35 | 10 | 183 | 169 | 90 |
| 65-160 | 100 | 65 | 100 | 526 | 160 | 200 | 65 | 16 | 125 | 95 | 280 | 212 | 14 | 396 | 32 | 80 | 35 | 10 | 160 | 130 | 75 |
| 65-200 | 100 | 65 | 100 | 526 | 180 | 225 | 65 | 18 | 125 | 95 | 320 | 250 | 14 | 396 | 32 | 80 | 35 | 10 | 174 | 152 | 82 |
| 65-250 | 100 | 65 | 125 | 539 | 200 | 250 | 80 | 20 | 160 | 120 | 360 | 280 | 18 | 409 | 32 | 80 | 35 | 10 | 195 | 175 | 90 |
| 80-160 | 125 | 80 | 125 | 526 | 180 | 225 | 65 | 16 | 125 | 95 | 320 | 250 | 14 | 396 | 32 | 80 | 35 | 10 | 186 | 142 | 80 |
| 80-200 | 125 | 80 | 125 | 526 | 180 | 250 | 65 | 18 | 125 | 95 | 345 | 280 | 14 | 396 | 32 | 80 | 35 | 10 | 188 | 158 | 95 |
| 80-250 | 125 | 80 | 125 | 539 | 225 | 280 | 80 | 20 | 160 | 120 | 400 | 315 | 18 | 409 | 32 | 80 | 35 | 10 | 225 | 185 | 112 |
| 100-200 | 125 | 100 | 125 | 526 | 200 | 280 | 80 | 20 | 160 | 120 | 360 | 280 | 18 | 396 | 32 | 80 | 35 | 10 | 211 | 170 | 112 |

Disegno schematico. Dimensioni in mm con tolleranze secondo EN 735-1995. Pesi indicativi in Kg, riferiti a pompe in esecuzione "GS" ghisa sferoidale escluso motore, non impegnativi.
 Schematic drawing. Dimensions in mm with tolerances to EN 735-1995 standards. Weights in Kgs, referred to pump in ductile iron "GS" construction without motor, not binding.

RIF. - Ref.: F.P./C.T.

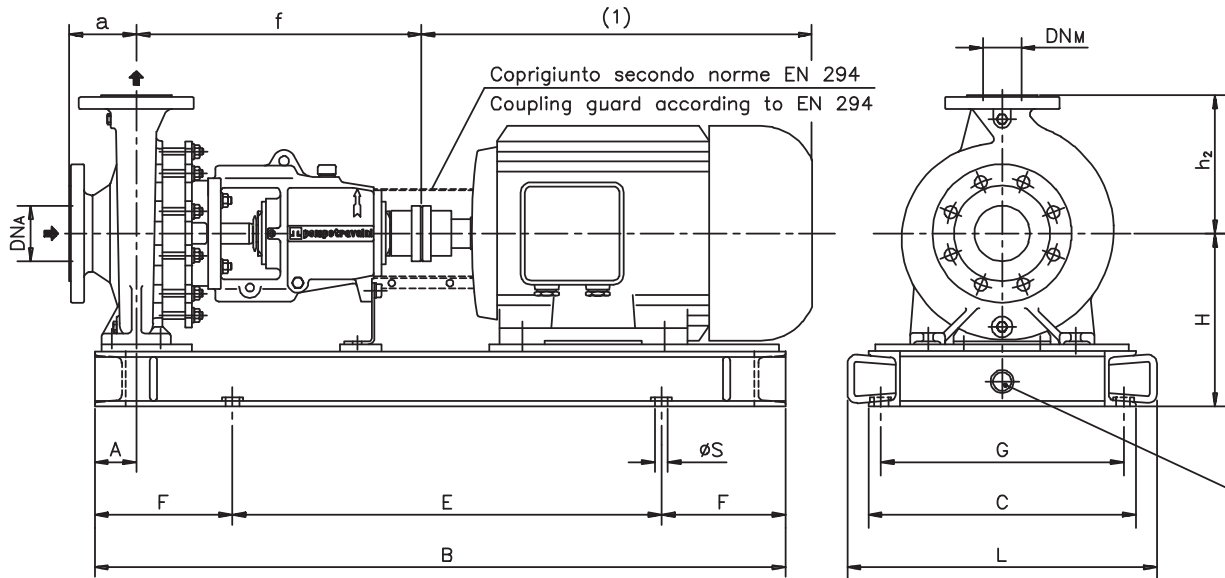
SOSTITUISCE - Replaces: 3900.100.201.01.A

DATA - Date: SETTEMBRE 2004 - September 2004

N°.: 3900.100.201.02.A



Versione **ACCOPIATA (BASE - GIUNTO)**
COUPLED construction (BASEPLATE - COUPLING)



$\phi 1/2$ " Gas drenaggio basamento (optional)
 $\phi 1/2$ " Gas baseplate drain (optional)

| Pompa tipo Pump type | DIMENSIONI Dimensions | | | | | | MOTORE ELETTRICO Electric Motor | | | | | | | | | | | | | | | | | | |
|-------------------------|--------------------------|-----------------|-----|-----|----------------|----|---------------------------------|-----|----------------|---------|-----|----------------|------|-----|----------------|------|-----|----------------|-----------|-----|----------------|-----------|-----|----------------|--|
| | | | | | | | 80M | | | 90S/90L | | | 100L | | | 112M | | | 132S/132M | | | 160M/160L | | | |
| | DN _A | DN _M | a | f | h ₂ | A | N° | H | Peso Weight | N° | H | Peso Weight | N° | H | Peso Weight | N° | H | Peso Weight | N° | H | Peso Weight | N° | H | Peso Weight | |
| 32-125 | 50 | 32 | 80 | 405 | 140 | 60 | C01 | 202 | 69 | C01 | 202 | 68,5 | C01 | 202 | 67,5 | C01 | 202 | 66 | C03 | 222 | 84 | | | | |
| 32-160 | 50 | 32 | 80 | 411 | 160 | 60 | C01 | 222 | 75 | C01 | 222 | 74,5 | C01 | 222 | 75 | C01 | 222 | 74,5 | C03 | 222 | 87 | | | | |
| 32-200 | 50 | 32 | 80 | 411 | 180 | 60 | C01 | 250 | 77,5 | C01 | 250 | 79 | C01 | 250 | 78 | C01 | 250 | 79 | C03 | 250 | 95 | C03 | 250 | 91 | |
| 40-125 | 65 | 40 | 80 | 405 | 140 | 60 | C01 | 202 | 71 | C01 | 202 | 70,5 | C01 | 202 | 69,5 | C01 | 202 | 68 | C03 | 222 | 86 | C03 | 250 | 86 | |
| 40-160 | 65 | 40 | 80 | 411 | 160 | 60 | C01 | 222 | 77 | C01 | 222 | 77,5 | C01 | 222 | 77 | C01 | 222 | 77,5 | C03 | 222 | 91 | C03 | 250 | 94 | |
| 40-200 | 65 | 40 | 100 | 411 | 180 | 60 | C01 | 250 | 80 | C01 | 250 | 81 | C01 | 250 | 81 | C01 | 250 | 81 | C03 | 250 | 97 | C03 | 250 | 93 | |
| 40-250 | 65 | 40 | 100 | 533 | 225 | 75 | | | | C03 | 270 | 129 | C03 | 270 | 131 | C03 | 270 | 133 | C03 | 270 | 133 | C05 | 270 | 137 | |
| 50-125 | 80 | 50 | 100 | 405 | 160 | 60 | C01 | 222 | 75 | C01 | 222 | 74,5 | C01 | 222 | 75 | C01 | 222 | 74,5 | C03 | 222 | 89 | C03 | 250 | 92 | |
| 50-160 | 80 | 50 | 100 | 411 | 180 | 60 | C01 | 250 | 79 | C01 | 250 | 80 | C01 | 250 | 80 | C01 | 250 | 80 | C03 | 250 | 96 | C03 | 250 | 92 | |
| 50-200 | 80 | 50 | 100 | 411 | 200 | 60 | C01 | 250 | 81 | C01 | 250 | 82 | C01 | 250 | 82 | C01 | 250 | 82 | C03 | 250 | 98 | C03 | 250 | 94 | |
| 50-250 | 80 | 50 | 125 | 533 | 225 | 75 | | | | | | | C03 | 270 | 136 | C03 | 270 | 138 | C03 | 270 | 138 | C05 | 270 | 144 | |
| 65-160 | 100 | 65 | 100 | 526 | 200 | 75 | | | | C03 | 250 | 122 | C03 | 250 | 123 | C03 | 250 | 123 | C03 | 250 | 124 | C05 | 250 | 123 | |
| 65-200 | 100 | 65 | 100 | 526 | 225 | 75 | | | | | | | C03 | 270 | 137 | C03 | 270 | 138 | C03 | 270 | 138 | C05 | 270 | 144 | |
| 65-250 | 100 | 65 | 125 | 539 | 250 | 90 | | | | | | | C05 | 290 | 144 | C05 | 290 | 144 | C05 | 290 | 145 | C05 | 290 | 146 | |
| 80-160 | 125 | 80 | 125 | 526 | 225 | 75 | | | | | | | C03 | 270 | 131 | C03 | 270 | 127 | C03 | 270 | 124 | C05 | 270 | 135 | |
| 80-200 | 125 | 80 | 125 | 526 | 250 | 75 | | | | | | | C03 | 270 | 143 | C03 | 270 | 142 | C03 | 270 | 142 | C05 | 270 | 150 | |
| 80-250 | 125 | 80 | 125 | 539 | 280 | 90 | | | | | | | | | | | | C05 | 315 | 167 | C05 | 315 | 166 | | |
| 100-200 | 125 | 100 | 125 | 526 | 280 | 90 | | | | | | | C05 | 290 | 178 | C05 | 290 | 177 | C05 | 290 | 177 | C05 | 290 | 176 | |

DISEGNO SCHEMATICO. DIMENSIONI IN MM CON TOLLERANZE SECONDO EN 735-1995. PESI INDICATIVI IN KG, RIFERITI A POMPE IN ESECUZIONE "GS" GHISA SFEROIDALE ESCLUSO MOTORE, NON IMPEGNATIVI.

Schematic drawing. Dimensions in mm with tolerances to EN 735-1995 standards. Weights in Kgs, referred to pump in ductile iron "GS" construction without motor, not certified.

(1) DIMENSIONI IN FUNZIONE DELLA MARCA DEL MOTORE ELETTRICO INSTALLATO / Not certified dimensions according to installed motor manufacture

RIF. - Ref.: E.Z./C.T.

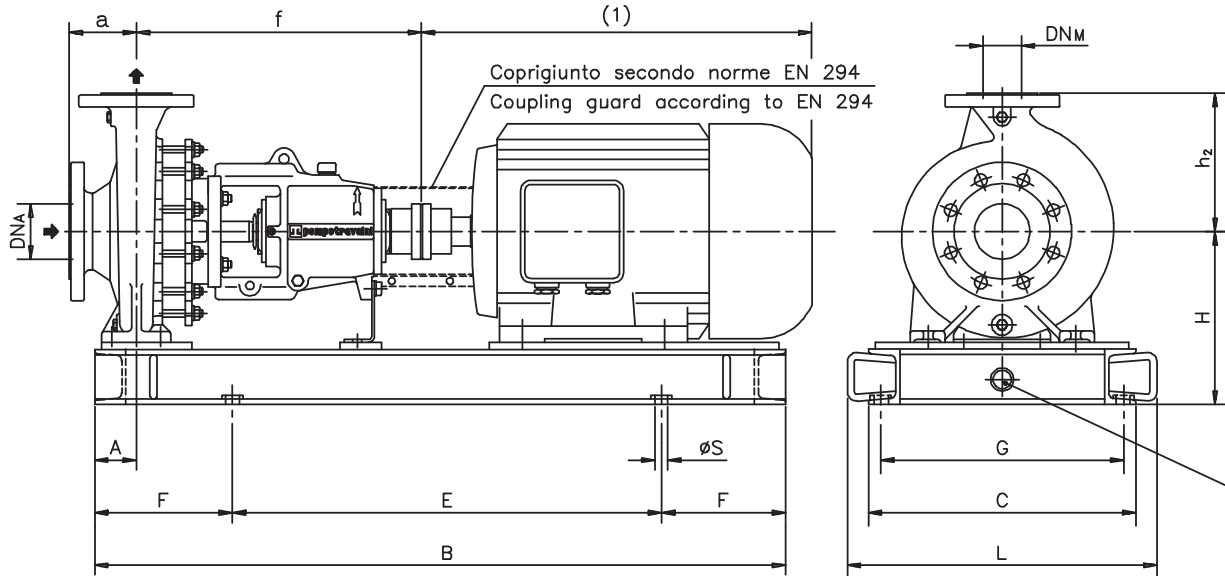
SOSTITUISCE - Replaces: 3900.1L3.2001.05.01

DATA - Date: NOVEMBRE 2011 - November 2011

N°.: 3900.1L3.2001.06.01



Versione **ACCOPIATA (BASE - GIUNTO)**
COUPLED construction (BASEPLATE - COUPLING)



$\phi 1/2$ " Gas drenaggio basamento (optional)
 $\phi 1/2$ " Gas baseplate drain (optional)

| Pompa tipo Pump type | DIMENSIONI Dimensions | | | | | | MOTORE ELETTRICO Electric Motor | | | | | | | | | | | | | | | | | | |
|-------------------------|--------------------------|-----------------|-----|-----|----------------|----|---------------------------------|-----|----------------|---------|-----|----------------|------|-----|----------------|------|-----|----------------|-----------|-----|----------------|-----------|-----|----------------|--|
| | | | | | | | 80M | | | 90S/90L | | | 100L | | | 112M | | | 132S/132M | | | 160M/160L | | | |
| | DN _A | DN _M | a | f | h ₂ | A | N° | H | Peso Weight | N° | H | Peso Weight | N° | H | Peso Weight | N° | H | Peso Weight | N° | H | Peso Weight | N° | H | Peso Weight | |
| 32-125 | 50 | 32 | 80 | 405 | 140 | 60 | C01 | 202 | 69 | C01 | 202 | 68,5 | C01 | 202 | 67,5 | C01 | 202 | 66 | C03 | 222 | 84 | | | | |
| 32-160 | 50 | 32 | 80 | 411 | 160 | 60 | C01 | 222 | 75 | C01 | 222 | 74,5 | C01 | 222 | 75 | C01 | 222 | 74,5 | C03 | 222 | 87 | | | | |
| 32-200 | 50 | 32 | 80 | 411 | 180 | 60 | C01 | 250 | 77,5 | C01 | 250 | 79 | C01 | 250 | 78 | C01 | 250 | 79 | C03 | 250 | 95 | C03 | 250 | 91 | |
| 40-125 | 65 | 40 | 80 | 405 | 140 | 60 | C01 | 202 | 71 | C01 | 202 | 70,5 | C01 | 202 | 69,5 | C01 | 202 | 68 | C03 | 222 | 86 | C03 | 250 | 86 | |
| 40-160 | 65 | 40 | 80 | 411 | 160 | 60 | C01 | 222 | 77 | C01 | 222 | 77,5 | C01 | 222 | 77 | C01 | 222 | 77,5 | C03 | 222 | 91 | C03 | 250 | 94 | |
| 40-200 | 65 | 40 | 100 | 411 | 180 | 60 | C01 | 250 | 80 | C01 | 250 | 81 | C01 | 250 | 81 | C01 | 250 | 81 | C03 | 250 | 97 | C03 | 250 | 93 | |
| 40-250 | 65 | 40 | 100 | 533 | 225 | 75 | | | | C03 | 270 | 129 | C03 | 270 | 131 | C03 | 270 | 133 | C03 | 270 | 133 | C05 | 270 | 137 | |
| 50-125 | 80 | 50 | 100 | 405 | 160 | 60 | C01 | 222 | 75 | C01 | 222 | 74,5 | C01 | 222 | 75 | C01 | 222 | 74,5 | C03 | 222 | 89 | C03 | 250 | 92 | |
| 50-160 | 80 | 50 | 100 | 411 | 180 | 60 | C01 | 250 | 79 | C01 | 250 | 80 | C01 | 250 | 80 | C01 | 250 | 80 | C03 | 250 | 96 | C03 | 250 | 92 | |
| 50-200 | 80 | 50 | 100 | 411 | 200 | 60 | C01 | 250 | 81 | C01 | 250 | 82 | C01 | 250 | 82 | C01 | 250 | 82 | C03 | 250 | 98 | C03 | 250 | 94 | |
| 50-250 | 80 | 50 | 125 | 533 | 225 | 75 | | | | | | | C03 | 270 | 136 | C03 | 270 | 138 | C03 | 270 | 138 | C05 | 270 | 144 | |
| 65-160 | 100 | 65 | 100 | 526 | 200 | 75 | | | | C03 | 250 | 122 | C03 | 250 | 123 | C03 | 250 | 123 | C03 | 250 | 124 | C05 | 250 | 123 | |
| 65-200 | 100 | 65 | 100 | 526 | 225 | 75 | | | | | | | C03 | 270 | 137 | C03 | 270 | 138 | C03 | 270 | 138 | C05 | 270 | 144 | |
| 65-250 | 100 | 65 | 125 | 539 | 250 | 90 | | | | | | | C05 | 290 | 144 | C05 | 290 | 144 | C05 | 290 | 145 | C05 | 290 | 146 | |
| 80-160 | 125 | 80 | 125 | 526 | 225 | 75 | | | | | | | C03 | 270 | 131 | C03 | 270 | 127 | C03 | 270 | 124 | C05 | 270 | 135 | |
| 80-200 | 125 | 80 | 125 | 526 | 250 | 75 | | | | | | | C03 | 270 | 143 | C03 | 270 | 142 | C03 | 270 | 142 | C05 | 270 | 150 | |
| 80-250 | 125 | 80 | 125 | 539 | 280 | 90 | | | | | | | | | | | | C05 | 315 | 167 | C05 | 315 | 166 | | |
| 100-200 | 125 | 100 | 125 | 526 | 280 | 90 | | | | | | | C05 | 290 | 178 | C05 | 290 | 177 | C05 | 290 | 177 | C05 | 290 | 176 | |

DISEGNO SCHEMATICO. DIMENSIONI IN MM CON TOLLERANZE SECONDO EN 735-1995. PESI INDICATIVI IN KG, RIFERITI A POMPE IN ESECUZIONE "GS" GHISA SFEROIDALE ESCLUSO MOTORE, NON IMPEGNATIVI.

Schematic drawing. Dimensions in mm with tolerances to EN 735-1995 standards. Weights in Kgs, referred to pump in ductile iron "GS" construction without motor, not certified.

(1) DIMENSIONI IN FUNZIONE DELLA MARCA DEL MOTORE ELETTRICO INSTALLATO / Not certified dimensions according to installed motor manufacture

RIF. - Ref.: E.Z./C.T.

SOSTITUISCE - Replaces: 3900.1L3.2001.05.01

DATA - Date: NOVEMBRE 2011 - November 2011

N°.: 3900.1L3.2001.06.01

Versione **ACCOPIATA (BASE - GIUNTO)**
COUPLED construction (BASEPLATE - COUPLING)

BASAMENTI
 Base plates

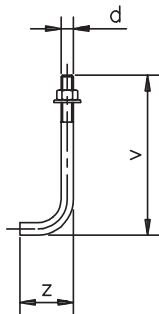
| N° | B | C | E | F | L | G | øS | N°fori holes |
|-----|------|-----|------|-----|-----|-----|----|--------------|
| C01 | 800 | 320 | 500 | 150 | 380 | 280 | 18 | 4 |
| C03 | 1000 | 385 | 600 | 200 | 445 | 345 | 18 | 4 |
| C05 | 1200 | 420 | 800 | 200 | 480 | 380 | 18 | 4 |
| C11 | 1350 | 500 | 950 | 200 | 570 | 452 | 18 | 4 |
| C13 | 1650 | 640 | 1050 | 300 | 710 | 592 | 18 | 4 |

DIMENSIONI FLANGE
 Flanges dimensions

| DN _A -DN _M | D | K | P | N°fori holes |
|----------------------------------|-----|-----|----|--------------|
| 25 | 115 | 85 | 14 | 4 |
| 32 | 140 | 100 | 18 | 4 |
| 40 | 150 | 110 | 18 | 4 |
| 50 | 165 | 125 | 18 | 4 |
| 65 | 185 | 145 | 18 | 4 |
| 80 | 200 | 160 | 18 | 8 |
| 100 | 220 | 180 | 18 | 8 |
| 125 | 250 | 210 | 18 | 8 |

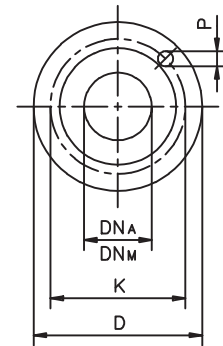
FLANGE:
 Dimensioni secondo
 UNI 2223-2229 PN16

FLANGES:
 Dimensions to
 UNI 2223-2229 NP16
 standards



BULLONI DI FONDAZIONE
 (OPTIONAL)
 Foundation bolts

| d | v | z |
|-----|-----|----|
| M14 | 280 | 50 |
| M16 | 350 | 60 |
| M20 | 400 | 80 |



| Pompa tipo Pump type | MOTORE ELETTRICO Electric Motor | | | | | | | | | | | | | | |
|-------------------------|---------------------------------|-----|-------------|------|-----|-------------|-----------|-----|-------------|------|-----|-------------|-----------|-----|-------------|
| | 180M/180L | | | 200L | | | 225S/225M | | | 250M | | | 280S/280M | | |
| | N° | H | Peso Weight | N° | H | Peso Weight | N° | H | Peso Weight | N° | H | Peso Weight | N° | H | Peso Weight |
| 32-125 | | | | | | | | | | | | | | | |
| 32-160 | | | | | | | | | | | | | | | |
| 32-200 | | | | | | | | | | | | | | | |
| 40-125 | | | | | | | | | | | | | | | |
| 40-160 | | | | | | | | | | | | | | | |
| 40-200 | C05 | 270 | 99 | | | | | | | | | | | | |
| 40-250 | C05 | 270 | 134 | | | | | | | | | | | | |
| 50-125 | | | | | | | | | | | | | | | |
| 50-160 | C05 | 270 | 98 | | | | | | | | | | | | |
| 50-200 | C05 | 270 | 100 | C11 | 330 | 139 | | | | | | | | | |
| 50-250 | C05 | 270 | 141 | C11 | 330 | 143 | C11 | 355 | 145 | C13 | 383 | 176 | C13 | 413 | 180 |
| 65-160 | C05 | 270 | 129 | C11 | 330 | 200 | | | | | | | | | |
| 65-200 | C05 | 270 | 141 | C11 | 330 | 175 | C11 | 355 | 175 | C13 | 383 | 205 | C13 | 413 | 206 |
| 65-250 | C05 | 290 | 143 | C11 | 330 | 182 | C11 | 355 | 185 | C13 | 383 | 216 | C13 | 413 | 219 |
| 80-160 | C05 | 270 | 132 | C11 | 330 | 175 | C11 | 355 | 177 | C13 | 383 | 205 | | | |
| 80-200 | C05 | 270 | 149 | C11 | 330 | 190 | C11 | 355 | 192 | C13 | 383 | 220 | C13 | 413 | 222 |
| 80-250 | C05 | 315 | 166 | C11 | 355 | 207 | C11 | 355 | 205 | C13 | 383 | 237 | C13 | 413 | 239 |
| 100-200 | C05 | 290 | 176 | C11 | 330 | 217 | C11 | 355 | 215 | C13 | 383 | 247 | C13 | 413 | 249 |

MOTORI ELETTRICI
 Electric Motors

| Grandezza Frame size | Giri/min RPM | Giri/min RPM |
|-------------------------|-----------------|-----------------|
| | 2900 | 1450 |
| IEC | Kw | Kw |
| 80M | 0,75 1,1 | 0,55 0,75 |
| 90S | 1,5 | 1,1 |
| 90L | 2,2 | 1,5 |
| 100L | 3 | 2,2 3 |
| 112M | 4 | 4 |
| 132S | | 5,5 |
| 132M | 5,5-7,5 | 7,5 |
| 160M | 11-15 | 11 |
| 160L | 18,5 | 15 |
| 180M | 22 | 18,5 |
| 180L | | 22 |
| 200L | 30-37 | 30 |
| 225S | | 37 |
| 225M | 45 | 45 |
| 250M | 55 | 55 |
| 280S | 75 | 75 |
| 280M | 90 | 90 |

DISEGNO SCHEMATICO. DIMENSIONI IN MM CON TOLLERANZE SECONDO EN 735-1995. PESI INDICATIVI IN KG, RIFERITI A POMPE IN ESECUZIONE "GS" GHISA SFEROIDALE ESCLUSO MOTORE, NON IMPEGNATIVI.

Schematic drawing. Dimensions in mm with tolerances to EN 735-1995 standards. Weights in Kgs, referred to pump in ductile iron "GS" construction without motor, not certified.

(1) DIMENSIONI IN FUNZIONE DELLA MARCA DEL MOTORE ELETTRICO INSTALLATO / Not certified dimensions according to installed motor manufacture

RIF. - Ref.: E.Z./C.T.

SOSTITUISCE - Replaces: 3900.1L3.2001.05.02

DATA - Date: NOVEMBRE 2011 - November 2011

N°.: 3900.1L3.2001.06.02

Versione **ACCOPIATA (BASE - GIUNTO)**
COUPLED construction (BASEPLATE - COUPLING)

BASAMENTI
 Base plates

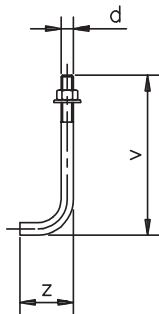
| N° | B | C | E | F | L | G | øS | N°fori holes |
|-----|------|-----|------|-----|-----|-----|----|--------------|
| C01 | 800 | 320 | 500 | 150 | 380 | 280 | 18 | 4 |
| C03 | 1000 | 385 | 600 | 200 | 445 | 345 | 18 | 4 |
| C05 | 1200 | 420 | 800 | 200 | 480 | 380 | 18 | 4 |
| C11 | 1350 | 500 | 950 | 200 | 570 | 452 | 18 | 4 |
| C13 | 1650 | 640 | 1050 | 300 | 710 | 592 | 18 | 4 |

DIMENSIONI FLANGE
 Flanges dimensions

| DN _A -DN _M | D | K | P | N°fori holes |
|----------------------------------|-----|-----|----|--------------|
| 25 | 115 | 85 | 14 | 4 |
| 32 | 140 | 100 | 18 | 4 |
| 40 | 150 | 110 | 18 | 4 |
| 50 | 165 | 125 | 18 | 4 |
| 65 | 185 | 145 | 18 | 4 |
| 80 | 200 | 160 | 18 | 8 |
| 100 | 220 | 180 | 18 | 8 |
| 125 | 250 | 210 | 18 | 8 |

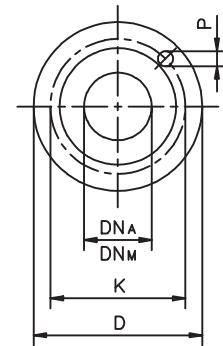
FLANGE:
 Dimensioni secondo
 UNI 2223-2229 PN16

FLANGES:
 Dimensions to
 UNI 2223-2229 NP16
 standards



BULLONI DI FONDAZIONE
 (OPTIONAL)
 Foundation bolts

| d | v | z |
|-----|-----|----|
| M14 | 280 | 50 |
| M16 | 350 | 60 |
| M20 | 400 | 80 |



| Pompa tipo Pump type | MOTORE ELETTRICO Electric Motor | | | | | | | | | | | | | | |
|-------------------------|---------------------------------|-----|-------------|------|-----|-------------|-----------|-----|-------------|------|-----|-------------|-----------|-----|-------------|
| | 180M/180L | | | 200L | | | 225S/225M | | | 250M | | | 280S/280M | | |
| | N° | H | Peso Weight | N° | H | Peso Weight | N° | H | Peso Weight | N° | H | Peso Weight | N° | H | Peso Weight |
| 32-125 | | | | | | | | | | | | | | | |
| 32-160 | | | | | | | | | | | | | | | |
| 32-200 | | | | | | | | | | | | | | | |
| 40-125 | | | | | | | | | | | | | | | |
| 40-160 | | | | | | | | | | | | | | | |
| 40-200 | C05 | 270 | 99 | | | | | | | | | | | | |
| 40-250 | C05 | 270 | 134 | | | | | | | | | | | | |
| 50-125 | | | | | | | | | | | | | | | |
| 50-160 | C05 | 270 | 98 | | | | | | | | | | | | |
| 50-200 | C05 | 270 | 100 | C11 | 330 | 139 | | | | | | | | | |
| 50-250 | C05 | 270 | 141 | C11 | 330 | 143 | C11 | 355 | 145 | C13 | 383 | 176 | C13 | 413 | 180 |
| 65-160 | C05 | 270 | 129 | C11 | 330 | 200 | | | | | | | | | |
| 65-200 | C05 | 270 | 141 | C11 | 330 | 175 | C11 | 355 | 175 | C13 | 383 | 205 | C13 | 413 | 206 |
| 65-250 | C05 | 290 | 143 | C11 | 330 | 182 | C11 | 355 | 185 | C13 | 383 | 216 | C13 | 413 | 219 |
| 80-160 | C05 | 270 | 132 | C11 | 330 | 175 | C11 | 355 | 177 | C13 | 383 | 205 | | | |
| 80-200 | C05 | 270 | 149 | C11 | 330 | 190 | C11 | 355 | 192 | C13 | 383 | 220 | C13 | 413 | 222 |
| 80-250 | C05 | 315 | 166 | C11 | 355 | 207 | C11 | 355 | 205 | C13 | 383 | 237 | C13 | 413 | 239 |
| 100-200 | C05 | 290 | 176 | C11 | 330 | 217 | C11 | 355 | 215 | C13 | 383 | 247 | C13 | 413 | 249 |

MOTORI ELETTRICI
 Electric Motors

| Grandezza Frame size | Giri/min RPM | Giri/min RPM |
|-------------------------|-----------------|-----------------|
| | 2900 | 1450 |
| IEC | Kw | Kw |
| 80M | 0,75 1,1 | 0,55 0,75 |
| 90S | 1,5 | 1,1 |
| 90L | 2,2 | 1,5 |
| 100L | 3 | 2,2 3 |
| 112M | 4 | 4 |
| 132S | | 5,5 |
| 132M | 5,5-7,5 | 7,5 |
| 160M | 11-15 | 11 |
| 160L | 18,5 | 15 |
| 180M | 22 | 18,5 |
| 180L | | 22 |
| 200L | 30-37 | 30 |
| 225S | | 37 |
| 225M | 45 | 45 |
| 250M | 55 | 55 |
| 280S | 75 | 75 |
| 280M | 90 | 90 |

DISEGNO SCHEMATICO. DIMENSIONI IN MM CON TOLLERANZE SECONDO EN 735-1995. PESI INDICATIVI IN KG, RIFERITI A POMPE IN ESECUZIONE "GS" GHISA SFEROIDALE ESCLUSO MOTORE, NON IMPEGNATIVI.

Schematic drawing. Dimensions in mm with tolerances to EN 735-1995 standards. Weights in Kgs, referred to pump in ductile iron "GS" construction without motor, not certified.

(1) DIMENSIONI IN FUNZIONE DELLA MARCA DEL MOTORE ELETTRICO INSTALLATO / Not certified dimensions according to installed motor manufacture

RIF. - Ref.: E.Z./C.T.

SOSTITUISCE - Replaces: 3900.1L3.2001.05.02

DATA - Date: NOVEMBRE 2011 - November 2011

N°.: 3900.1L3.2001.06.02

DIMENSIONI D'INGOMBRO / Overall dimensions.
 POMPE CENTRIFUGHE MONOSTADIO
 Monostage centrifugal pumps
 SERIE / Series
TCT gr. 1-2 pag.2/2



200 Newsome Drive
 Yorktown, VA 23693
 1-800-535-4243
 www.Travaini.com

Versione **ACCOPIATA (BASE - GIUNTO SPAZIATORE)**
COUPLED construction (BASEPLATE - SPACER COUPLING)

BASAMENTI
 Base plates

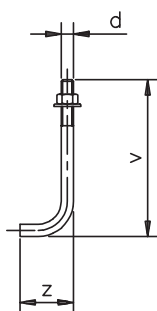
| N° | B | C | E | F | L | G | øS | N°fori holes |
|-----|------|-----|------|-----|-----|-----|----|--------------|
| C01 | 800 | 320 | 500 | 150 | 380 | 280 | 18 | 4 |
| C03 | 1000 | 385 | 600 | 200 | 445 | 345 | 18 | 4 |
| C05 | 1200 | 420 | 800 | 200 | 480 | 380 | 18 | 4 |
| C11 | 1350 | 500 | 950 | 200 | 570 | 452 | 18 | 4 |
| C13 | 1650 | 640 | 1050 | 300 | 710 | 592 | 18 | 4 |

DIMENSIONI FLANGE
 Flanges dimensions

| DN _A -DN _M | D | K | P | N°fori holes |
|----------------------------------|-----|-----|----|--------------|
| 25 | 115 | 85 | 14 | 4 |
| 32 | 140 | 100 | 18 | 4 |
| 40 | 150 | 110 | 18 | 4 |
| 50 | 165 | 125 | 18 | 4 |
| 65 | 185 | 145 | 18 | 4 |
| 80 | 200 | 160 | 18 | 8 |
| 100 | 220 | 180 | 18 | 8 |
| 125 | 250 | 210 | 18 | 8 |

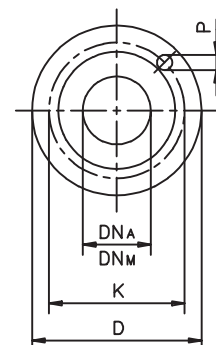
FLANGE:
 Dimensioni secondo
 UNI 2223-2229 PN16

FLANGES:
 Dimensions to
 UNI 2223-2229 NP16
 standards



BULLONI DI FONDAZIONE
 (OPTIONAL)
 Foundation bolts

| d | v | z |
|-----|-----|----|
| M14 | 280 | 50 |
| M16 | 350 | 60 |
| M20 | 400 | 80 |



| Pompa tipo Pump type | MOTORE ELETTRICO Electric Motor | | | | | | | | | | | | | | |
|-------------------------|---------------------------------|-----|----------------|------|-----|----------------|-----------|-----|----------------|------|-----|----------------|-----------|-----|----------------|
| | 180M/180L | | | 200L | | | 225S/225M | | | 250M | | | 280S/280M | | |
| | N° | H | Peso Weight | N° | H | Peso Weight | N° | H | Peso Weight | N° | H | Peso Weight | N° | H | Peso Weight |
| 32-125 | | | | | | | | | | | | | | | |
| 32-160 | | | | | | | | | | | | | | | |
| 32-200 | | | | | | | | | | | | | | | |
| 40-125 | | | | | | | | | | | | | | | |
| 40-160 | | | | | | | | | | | | | | | |
| 40-200 | C05 | 270 | 101 | | | | | | | | | | | | |
| 40-250 | C11 | 310 | 175 | | | | | | | | | | | | |
| 50-125 | | | | | | | | | | | | | | | |
| 50-160 | C05 | 270 | 100 | | | | | | | | | | | | |
| 50-200 | C05 | 270 | 102 | C11 | 330 | 141 | | | | | | | | | |
| 50-250 | C11 | 310 | 182 | C13 | 333 | 175 | C13 | 358 | 177 | C13 | 383 | 178 | C13 | 413 | 182 |
| 65-160 | C11 | 310 | 170 | C13 | 333 | 232 | | | | | | | | | |
| 65-200 | C11 | 310 | 182 | C13 | 333 | 207 | C13 | 358 | 207 | C13 | 383 | 207 | C13 | 413 | 208 |
| 65-250 | C11 | 330 | 184 | C13 | 333 | 214 | C13 | 358 | 217 | C13 | 383 | 218 | C13 | 413 | 221 |
| 80-160 | C11 | 310 | 174 | C13 | 333 | 207 | C13 | 358 | 209 | C13 | 383 | 207 | | | |
| 80-200 | C11 | 310 | 190 | C13 | 333 | 222 | C13 | 358 | 224 | C13 | 383 | 222 | C13 | 413 | 224 |
| 80-250 | C11 | 355 | 207 | C13 | 358 | 239 | C13 | 358 | 237 | C13 | 383 | 239 | C13 | 413 | 241 |
| 100-200 | C11 | 330 | 217 | C13 | 333 | 249 | C13 | 358 | 247 | C13 | 383 | 249 | C13 | 413 | 251 |

MOTORI ELETTRICI
 Electric Motors

| Grandezza Frame size | Giri/min RPM | Giri/min RPM |
|-------------------------|-----------------|-----------------|
| | 2900 | 1450 |
| IEC | Kw | Kw |
| 80M | 0,75 1,1 | 0,55 0,75 |
| 90S | 1,5 | 1,1 |
| 90L | 2,2 | 1,5 |
| 100L | 3 | 2,2 3 |
| 112M | 4 | 4 |
| 132S | 5,5-7,5 | 5,5 |
| 132M | | 7,5 |
| 160M | 11-15 | 11 |
| 160L | 18,5 | 15 |
| 180M | 22 | 18,5 |
| 180L | | 22 |
| 200L | 30-37 | 30 |
| 225S | | 37 |
| 225M | 45 | 45 |
| 250M | 55 | 55 |
| 280S | 75 | 75 |
| 280M | 90 | 90 |

DISEGNO SCHEMATICO. DIMENSIONI IN MM CON TOLLERANZE SECONDO EN 735-1995. PESI INDICATIVI IN KG, RIFERITI A POMPE IN ESECUZIONE "GS" GHISA SFEROIDALE ESCLUSO MOTORE, NON IMPEGNATIVI.

Schematic drawing. Dimensions in mm with tolerances to EN 735-1995 standards. Weights in Kgs, referred to pump in ductile iron "GS" construction without motor, not binding.

(1) DIMENSIONI IN FUNZIONE DELLA MARCA DEL MOTORE ELETTRICO INSTALLATO / Not binding dimensions according to installed motor supplier

RIF. - Ref.: E.Z./C.T.

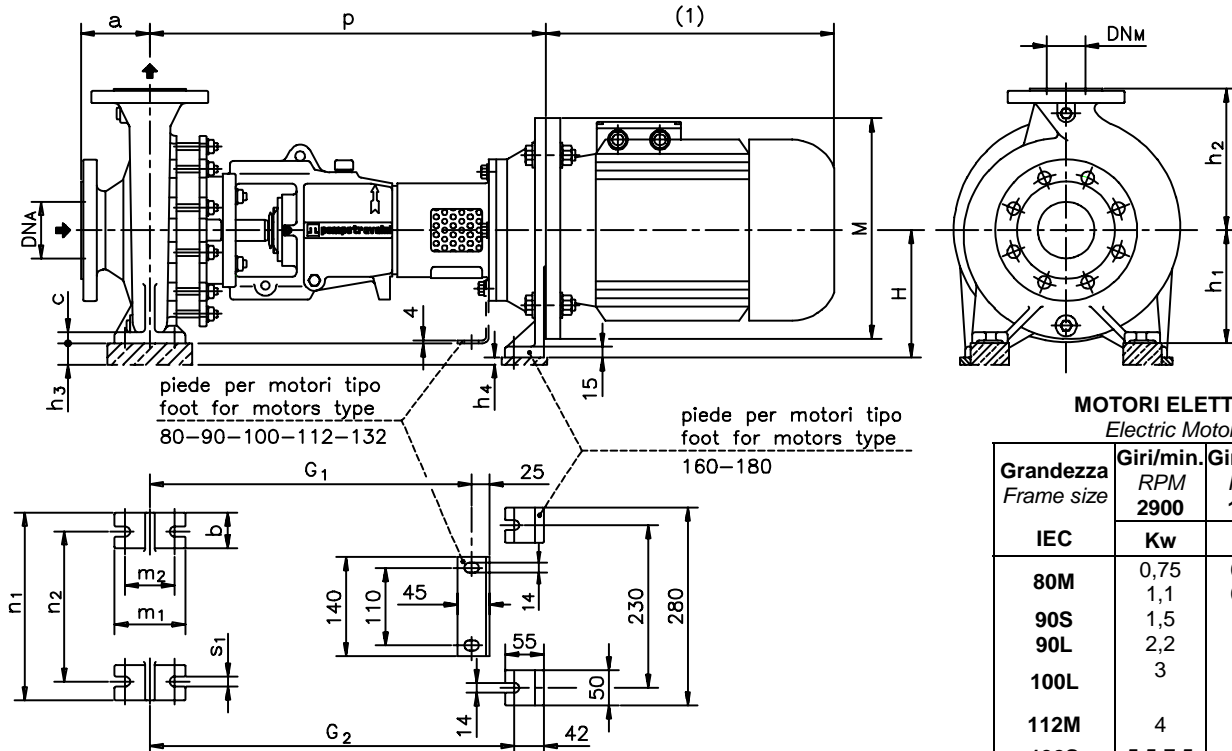
SOSTITUISCE - Replaces: 3900.1L5.2001.04.02

DATA - Date: NOVEMBRE 2011 - November 2011

N°.: 3900.1L5.2001.05.02



Versione **MONOBLOCCO / M** **CLOSE - COUPLED / M** construction



MOTORI ELETTRICI
Electric Motors

| Grandezza Frame size | Giri/min. RPM | | M |
|-------------------------|---------------|------|-----|
| | 2900 | 1450 | |
| IEC | Kw | | |
| 80M | 0,75 | 0,55 | 200 |
| | 1,1 | 0,75 | |
| 90S | 1,5 | 1,1 | 200 |
| 90L | 2,2 | 1,5 | 250 |
| 100L | 3 | 3 | |
| 112M | 4 | 4 | 250 |
| 132S | 5,5-7,5 | 5,5 | 300 |
| 132M | | 7,5 | |
| 160M | 11-15 | 11 | 350 |
| 160L | 18,5 | 15 | |
| 180M | 22 | 18,5 | 350 |
| 180L | | 22 | |

| Pompa tipo Pump type | Versione MONOBLOCCO CLOSE-COUPLED construction | | | | | | | | | | | | | | | | |
|-------------------------|--|----------------|--------------|-----|----------------|----------------|----------------|-----|----------------|----------------|-------------|-----|----------------|----------------|----------------|----------------|-------------|
| | motore motor | | 80-90 | | motore motor | | 100-112 | | motore motor | | 132 | | motore motor | | 160-180 | | |
| | p | G ₁ | Peso Weight | p | G ₁ | h ₃ | Peso Weight | p | G ₁ | h ₃ | Peso Weight | H | h ₃ | h ₄ | p | G ₂ | Peso Weight |
| 32-125 | 466 | 430 | 42 | 491 | 430 | 20 | 46 | 496 | 430 | 48 | 49 | 180 | 68 | - | 536 | 497 | 55 |
| 32-160 | 472 | 436 | 48 | 497 | 436 | - | 52 | 502 | 436 | 28 | 55 | 180 | 48 | - | 542 | 503 | 61 |
| 32-200 | 472 | 436 | 52 | 497 | 436 | - | 56 | 502 | 436 | - | 59 | 180 | 20 | - | 542 | 503 | 65 |
| 40-125 | 466 | 430 | 44 | 491 | 430 | 20 | 48 | 496 | 430 | 48 | 51 | 180 | 68 | - | 536 | 497 | 57 |
| 40-160 | 472 | 436 | 48 | 497 | 436 | - | 52 | 502 | 436 | 28 | 55 | 180 | 48 | - | 542 | 503 | 61 |
| 40-200 | 472 | 436 | 54 | 497 | 436 | - | 58 | 502 | 436 | - | 61 | 180 | 20 | - | 542 | 503 | 67 |
| 40-250 | | | | 613 | 573 | - | 92 | 634 | 595 | - | 98 | 200 | 20 | - | 663 | 618 | 108 |
| 50-125 | 466 | 430 | 48 | 491 | 430 | - | 52 | 496 | 430 | 28 | 55 | 180 | 48 | - | 536 | 497 | 61 |
| 50-160 | 472 | 436 | 53 | 497 | 436 | - | 57 | 502 | 436 | - | 60 | 180 | 20 | - | 542 | 503 | 66 |
| 50-200 | 472 | 436 | 55 | 497 | 436 | - | 59 | 502 | 436 | - | 62 | 180 | 20 | - | 542 | 503 | 68 |
| 50-250 | | | | 613 | 573 | - | 100 | 634 | 595 | - | 103 | 200 | 20 | - | 663 | 618 | 113 |
| 65-160 | | | | 606 | 566 | - | 85 | 627 | 588 | - | 88 | 200 | 40 | - | 656 | 611 | 98 |
| 65-200 | | | | 606 | 566 | - | 92 | 627 | 588 | - | 95 | 200 | 20 | - | 656 | 611 | 105 |
| 65-250 | | | | 619 | 579 | - | 100 | 640 | 601 | - | 103 | 200 | - | - | 669 | 624 | 113 |
| 80-160 | | | | 606 | 566 | - | 90 | 627 | 588 | - | 93 | 200 | 20 | - | 656 | 611 | 103 |
| 80-200 | | | | 606 | 566 | - | 105 | 627 | 588 | - | 108 | 200 | 20 | - | 656 | 611 | 118 |
| 80-250 | | | | 619 | 579 | - | 122 | 640 | 601 | - | 125 | 200 | - | 25 | 669 | 624 | 135 |
| 100-200 | | | | 606 | 566 | - | 122 | 627 | 588 | - | 125 | 200 | - | - | 656 | 611 | 135 |

DIMENSIONI FLANGE
Flanges dimensions

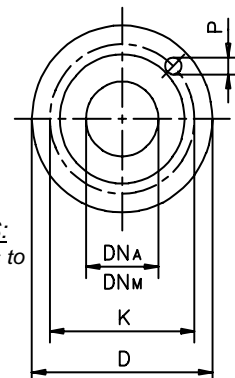
| DN _A -DN _M | D | K | P | N° fori holes |
|----------------------------------|-----|-----|----|---------------|
| 25 | 115 | 85 | 14 | 4 |
| 32 | 140 | 100 | 18 | 4 |
| 40 | 150 | 110 | 18 | 4 |
| 50 | 165 | 125 | 18 | 4 |
| 65 | 185 | 145 | 18 | 4 |
| 80 | 200 | 160 | 18 | 8 |
| 100 | 220 | 180 | 18 | 8 |
| 125 | 250 | 210 | 18 | 8 |

FLANGE:

Dimensioni secondo UNI 2223 - 2229 PN16.

FLANGES:

Dimensions to UNI 2223 - 2229 NP16 standards



(1) Dimensioni in funzione della marca del motore elettrico installato / Not binding dimensions according to installed motor supplier

(h₃) (h₄) Spessori per allineamento motore - pompa esclusi dalla fornitura / Spacers for motor - pump alignment are not supplied by pompetravaini

RIF. - Ref.: F.P./C.T.

SOSTITUISCE - Replaces: 3900.100.201.01.B

DATA - Date: SETTEMBRE 2004 - September 2004

N°.: 3900.100.201.02.B

DIMENSIONI D'INGOMBRO / Overall dimensions.
 POMPE CENTRIFUGHE MONOSTADIO
 Monostage centrifugal pumps
 SERIE / Series
TCT gr. 1-2 pag.2/2



200 Newsome Drive
 Yorktown, VA 23693
 1-800-535-4243
 www.Travaini.com

Versione **ACCOPIATA (BASE - GIUNTO SPAZIATORE)**
COUPLED construction (BASEPLATE - SPACER COUPLING)

BASAMENTI
 Base plates

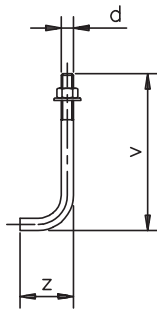
| N° | B | C | E | F | L | G | øS | N°fori holes |
|-----|------|-----|------|-----|-----|-----|----|--------------|
| C01 | 800 | 320 | 500 | 150 | 380 | 280 | 18 | 4 |
| C03 | 1000 | 385 | 600 | 200 | 445 | 345 | 18 | 4 |
| C05 | 1200 | 420 | 800 | 200 | 480 | 380 | 18 | 4 |
| C11 | 1350 | 500 | 950 | 200 | 570 | 452 | 18 | 4 |
| C13 | 1650 | 640 | 1050 | 300 | 710 | 592 | 18 | 4 |

DIMENSIONI FLANGE
 Flanges dimensions

| DN _A -DN _M | D | K | P | N°fori holes |
|----------------------------------|-----|-----|----|--------------|
| 25 | 115 | 85 | 14 | 4 |
| 32 | 140 | 100 | 18 | 4 |
| 40 | 150 | 110 | 18 | 4 |
| 50 | 165 | 125 | 18 | 4 |
| 65 | 185 | 145 | 18 | 4 |
| 80 | 200 | 160 | 18 | 8 |
| 100 | 220 | 180 | 18 | 8 |
| 125 | 250 | 210 | 18 | 8 |

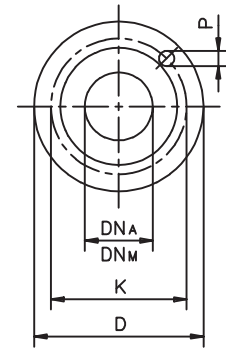
FLANGE:
 Dimensioni secondo
 UNI 2223-2229 PN16

FLANGES:
 Dimensions to
 UNI 2223-2229 NP16
 standards



BULLONI DI FONDAZIONE
 (OPTIONAL)
 Foundation bolts

| d | v | z |
|-----|-----|----|
| M14 | 280 | 50 |
| M16 | 350 | 60 |
| M20 | 400 | 80 |



| Pompa tipo Pump type | MOTORE ELETTRICO Electric Motor | | | | | | | | | | | | | | |
|-------------------------|---------------------------------|-----|----------------|------|-----|----------------|-----------|-----|----------------|------|-----|----------------|-----------|-----|----------------|
| | 180M/180L | | | 200L | | | 225S/225M | | | 250M | | | 280S/280M | | |
| | N° | H | Peso Weight | N° | H | Peso Weight | N° | H | Peso Weight | N° | H | Peso Weight | N° | H | Peso Weight |
| 32-125 | | | | | | | | | | | | | | | |
| 32-160 | | | | | | | | | | | | | | | |
| 32-200 | | | | | | | | | | | | | | | |
| 40-125 | | | | | | | | | | | | | | | |
| 40-160 | | | | | | | | | | | | | | | |
| 40-200 | C05 | 270 | 101 | | | | | | | | | | | | |
| 40-250 | C11 | 310 | 175 | | | | | | | | | | | | |
| 50-125 | | | | | | | | | | | | | | | |
| 50-160 | C05 | 270 | 100 | | | | | | | | | | | | |
| 50-200 | C05 | 270 | 102 | C11 | 330 | 141 | | | | | | | | | |
| 50-250 | C11 | 310 | 182 | C13 | 333 | 175 | C13 | 358 | 177 | C13 | 383 | 178 | C13 | 413 | 182 |
| 65-160 | C11 | 310 | 170 | C13 | 333 | 232 | | | | | | | | | |
| 65-200 | C11 | 310 | 182 | C13 | 333 | 207 | C13 | 358 | 207 | C13 | 383 | 207 | C13 | 413 | 208 |
| 65-250 | C11 | 330 | 184 | C13 | 333 | 214 | C13 | 358 | 217 | C13 | 383 | 218 | C13 | 413 | 221 |
| 80-160 | C11 | 310 | 174 | C13 | 333 | 207 | C13 | 358 | 209 | C13 | 383 | 207 | | | |
| 80-200 | C11 | 310 | 190 | C13 | 333 | 222 | C13 | 358 | 224 | C13 | 383 | 222 | C13 | 413 | 224 |
| 80-250 | C11 | 355 | 207 | C13 | 358 | 239 | C13 | 358 | 237 | C13 | 383 | 239 | C13 | 413 | 241 |
| 100-200 | C11 | 330 | 217 | C13 | 333 | 249 | C13 | 358 | 247 | C13 | 383 | 249 | C13 | 413 | 251 |

MOTORI ELETTRICI
 Electric Motors

| Grandezza Frame size | Giri/min RPM | Giri/min RPM |
|-------------------------|-----------------|-----------------|
| | 2900 | 1450 |
| IEC | Kw | Kw |
| 80M | 0,75 1,1 | 0,55 0,75 |
| 90S | 1,5 | 1,1 |
| 90L | 2,2 | 1,5 |
| 100L | 3 | 2,2 3 |
| 112M | 4 | 4 |
| 132S | 5,5-7,5 | 5,5 |
| 132M | | 7,5 |
| 160M | 11-15 | 11 |
| 160L | 18,5 | 15 |
| 180M | 22 | 18,5 |
| 180L | | 22 |
| 200L | 30-37 | 30 |
| 225S | | 37 |
| 225M | 45 | 45 |
| 250M | 55 | 55 |
| 280S | 75 | 75 |
| 280M | 90 | 90 |

DISEGNO SCHEMATICO. DIMENSIONI IN MM CON TOLLERANZE SECONDO EN 735-1995. PESI INDICATIVI IN KG, RIFERITI A POMPE IN ESECUZIONE "GS" GHISA SFEROIDALE ESCLUSO MOTORE, NON IMPEGNATIVI.

Schematic drawing. Dimensions in mm with tolerances to EN 735-1995 standards. Weights in Kgs, referred to pump in ductile iron "GS" construction without motor, not binding.

(1) DIMENSIONI IN FUNZIONE DELLA MARCA DEL MOTORE ELETTRICO INSTALLATO / Not binding dimensions according to installed motor supplier

RIF. - Ref.: E.Z./C.T.

SOSTITUISCE - Replaces: 3900.1L5.2001.04.02

DATA - Date: NOVEMBRE 2011 - November 2011

N°.: 3900.1L5.2001.05.02