

DIMENSIONI D'INGOMBRO

Overall dimensions
POMPE CENTRIFUGHE MULTISTADIO
 Multistage centrifugal pumps
 SERIE **TMA 31 & TMA 32**
 Series

pag.1/2



TRAVAINI PUMPS USA
 Liquid Ring & Rotary Vane Vacuum Pumps and Systems

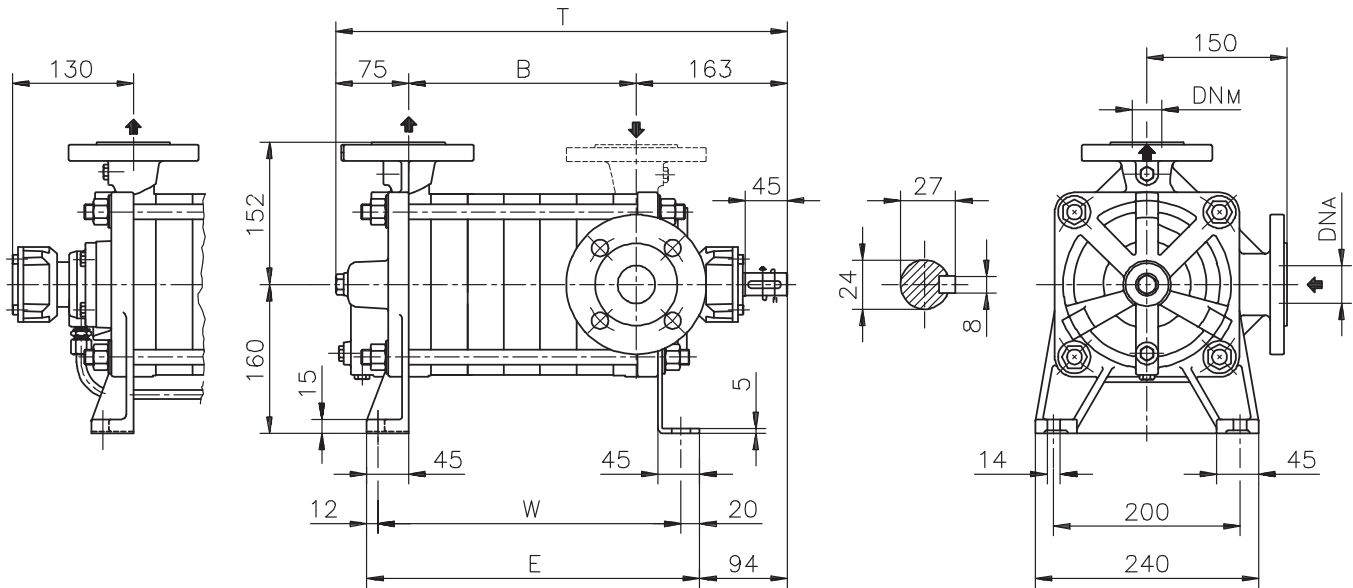
200 Newsome Drive
 Yorktown, VA 23693
 1-800-535-4243
 www.Travaini.com

Versione ad **ASSE NUDO**

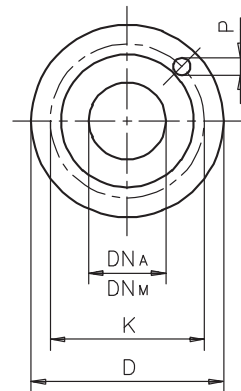
BARESHAFT construction

Esecuzione **C**
 construction **C**

Esecuzione **R***
 construction **R***



| POMPA TIPO Pump model | Versione ad ASSE NUDO BARESHAFT construction | | | | | | |
|------------------------------|---|-----------------|-----|-----|-----|-----|----------------|
| | DN _A | DN _M | B | T | W | E | Peso weight |
| TMA 31-3 & 32-3 | 40 | 32 | 125 | 363 | 205 | 237 | 35 |
| TMA 31-4 & 32-4 | 40 | 32 | 164 | 402 | 244 | 276 | 40 |
| TMA 31-5 & 32-5 | 40 | 32 | 203 | 441 | 283 | 315 | 45 |
| TMA 31-6 & 32-6 | 40 | 32 | 242 | 480 | 322 | 354 | 50 |
| TMA 31-7 & 32-7 | 40 | 32 | 281 | 519 | 361 | 393 | 55 |
| TMA 31-8 & 32-8 | 40 | 32 | 320 | 558 | 400 | 432 | 60 |
| TMA 31-9 & 32-9 | 40 | 32 | 359 | 597 | 439 | 471 | 65 |
| TMA 31-10 & 32-10 | 40 | 32 | 398 | 636 | 478 | 510 | 70 |
| TMA 31-11 & 32-11 | 40 | 32 | 437 | 675 | 517 | 549 | 75 |
| TMA 31-12 & 32-12 | 40 | 32 | 476 | 714 | 556 | 588 | 80 |
| TMA 31-13 & 32-13 | 40 | 32 | 515 | 753 | 595 | 627 | 85 |
| TMA 31-14 & 32-14 | 40 | 32 | 554 | 792 | 634 | 666 | 90 |
| TMA 31-15 & 32-15 | 40 | 32 | 593 | 831 | 673 | 705 | 95 |



FLANGE:

Flange DN32 dimensioni secondo UNI 2223-29 PN40.
 Flange DN40 dimensioni secondo UNI 2223-29 PN16.

FLANGES:

Flanges ND32 dimensions to UNI 2223-29 NP40 standards.
 Flanges ND40 dimensions to UNI 2223-29 NP16

DIMENSIONI FLANGE

Flanges dimensions

| DN _A - DN _M | D | K | P | N° fori holes |
|-----------------------------------|-----|-----|----|------------------|
| 32 | 140 | 100 | 18 | 4 |
| 40 | 150 | 110 | 18 | 4 |

(*) L'esecuzione /R è disponibile fino alla versione **TMA 31-9** e **32-9**. Construction /R is available up to version **TMA 31-9** and **32-9**.

Disegno schematico. Dimensioni in mm con tolleranze secondo EN 735-1995. Pesì indicativi in Kg, riferiti a pompe in ghisa escluso motore, non impegnativi.

Schematic drawing. Dimensions in mm with tolerances to EN 735-1995 standards. Weights in Kgs, referred to pump in cast iron without motor, not certified.

Su richiesta la bocca aspirante può essere ruotata ortogonalmente sull'asse longitudinale. On request suction branch can be orthogonally rotated on longitudinal axis.

RIF. - Ref.: Z.A./C.T.

SOSTITUISCE - Replaces: 4410÷4413.2L0.201.01.A

DATA - Date: MAGGIO 98 - May 98

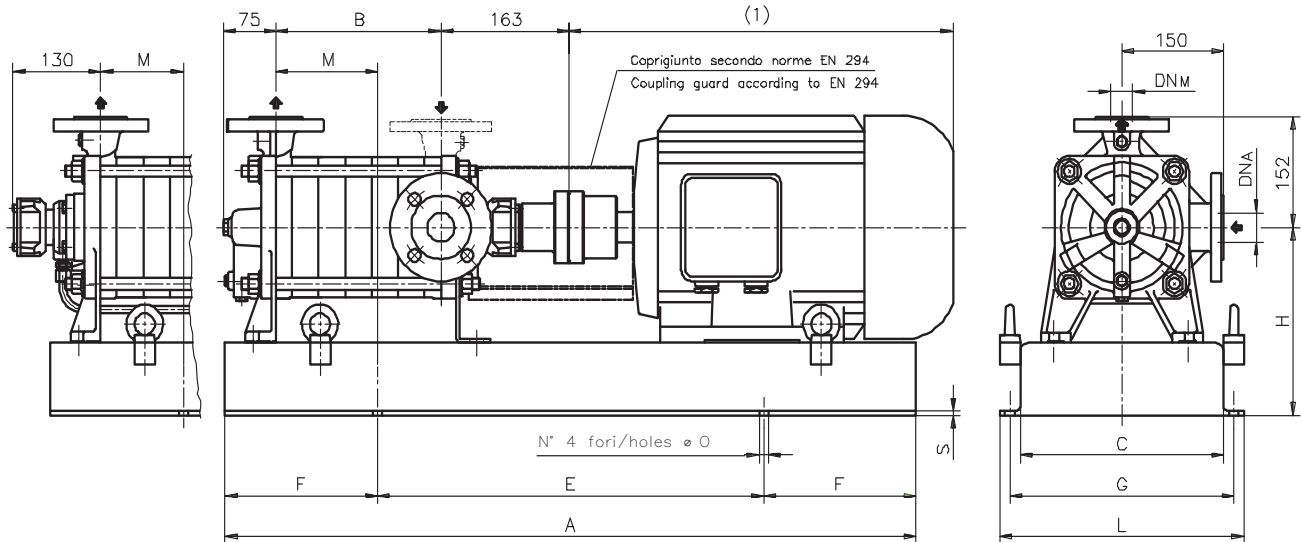
N°.: 4410÷4413.2L0.201.02.A

Versione **ACCOPIATA (BASE - GIUNTO)**

COUPLED construction (BASEPLATE - COUPLING)

Esecuzione **C**
 construction **C**

Esecuzione **R***
 construction **R***



| POMPA TIPO Pump model | DIMENSIONI Dimensions | | | MOTORE ELETTRICO Electric motor | | | | | | | | | | | | | | | |
|--------------------------|--------------------------|-----------------|-----|---------------------------------|----|-----|-------------|------|-----|-----|-------------|------|-----|-----|-------------|------|-----|-----|-------------|
| | DN _A | DN _M | B | 90L | | | | 100L | | | | 112M | | | | 132S | | | |
| | | | | N° | M | H | Peso weight | N° | M | H | Peso weight | N° | M | H | Peso weight | N° | M | H | Peso weight |
| TMA 31-3 & 32-3 | 40 | 32 | 125 | 901 | 70 | 220 | 62 | 901 | 100 | 220 | 62 | 901 | 100 | 220 | 62 | 900 | 30 | 225 | 62 |
| TMA 31-4 & 32-4 | 40 | 32 | 164 | | | | | 901 | 115 | 220 | 67 | 901 | 115 | 220 | 67 | 900 | 50 | 225 | 73 |
| TMA 31-5 & 32-5 | 40 | 32 | 203 | | | | | | | | | 901 | 130 | 220 | 72 | 900 | 70 | 225 | 78 |
| TMA 31-6 & 32-6 | 40 | 32 | 242 | | | | | | | | | 900 | 55 | 225 | 82 | 900 | 90 | 225 | 83 |
| TMA 31-7 & 32-7 | 40 | 32 | 281 | | | | | | | | | | | | | 900 | 110 | 225 | 88 |
| TMA 31-8 & 32-8 | 40 | 32 | 320 | | | | | | | | | | | | | 900 | 135 | 225 | 93 |
| TMA 31-9 & 32-9 | 40 | 32 | 359 | | | | | | | | | | | | | 900 | 135 | 225 | 98 |
| TMA 31-10 & 32-10 | 40 | 32 | 398 | | | | | | | | | | | | | 903 | 80 | 250 | 119 |
| TMA 31-11 & 32-11 | 40 | 32 | 437 | | | | | | | | | | | | | | | | |
| TMA 31-12 & 32-12 | 40 | 32 | 476 | | | | | | | | | | | | | | | | |
| TMA 31-13 & 32-13 | 40 | 32 | 515 | | | | | | | | | | | | | | | | |
| TMA 31-14 & 32-14 | 40 | 32 | 554 | | | | | | | | | | | | | | | | |
| TMA 31-15 & 32-15 | 40 | 32 | 593 | | | | | | | | | | | | | | | | |

(*) L'ESECUZIONE /R È DISPONIBILE FINO ALLA VERSIONE TMA 31-9 E TMA32-9. / Construction /R is available up to version TMA 31-9 and TMA-32-9.
 DISEGNO SCHEMATICO. DIMENSIONI IN MM CON TOLLERANZE SECONDO EN 735-1995. PESI INDICATIVI IN KG, RIFERITI A POMPE IN GHISA ESCLUSO MOTORE, NON IMPEGNATIVI. / Schematic drawing. Dimensions in mm with tolerances to EN 735-1995 standards. Weights in Kgs, referred to pump in cast iron without motor, not certified.
 (1) DIMENSIONI IN FUNZIONE DELLA MARCA DEL MOTORE ELETTRICO INSTALLATO. / (1) Not certified dimensions according to installed motor manufacture.
 SU RICHIESTA LA BOCCA ASPIRANTE PUÒ ESSERE RUOTATA ORTOGONALMENTE SULL'ASSE LONGITUDINALE. / On request suction branch can be orthogonally rotated on longitudinal axis.

DIMENSIONI D'INGOMBRO / Overall dimensions.
 POMPE CENTRIFUGHE MONOSTADIO
 Monostage centrifugal pumps
 SERIE / Series
TMA 31 & 32 pag.2/2

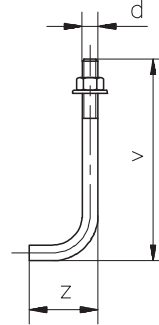


200 Newsome Drive
 Yorktown, VA 23693
 1-800-535-4243
 www.Travaini.com

Versione **ACCOPIATA (BASE - GIUNTO)**
COUPLED construction (BASEPLATE - COUPLING)

BASAMENTI
 Base plates

| N° | A | C | E | F | L | G | S | ØO |
|-----|------|-----|------|-----|-----|-----|---|----|
| 900 | 960 | 310 | 600 | 180 | 370 | 340 | 5 | 14 |
| 901 | 770 | 290 | 420 | 175 | 350 | 320 | 5 | 14 |
| 903 | 1170 | 350 | 770 | 200 | 410 | 380 | 6 | 14 |
| 906 | 1400 | 350 | 950 | 225 | 410 | 380 | 6 | 14 |
| 034 | 1700 | 450 | 1100 | 300 | 590 | 540 | 7 | 18 |
| 041 | 1350 | 420 | 900 | 225 | 560 | 510 | 7 | 18 |



BULLONI DI FONDAZIONE
 (OPTIONAL)
 Foundation bolts

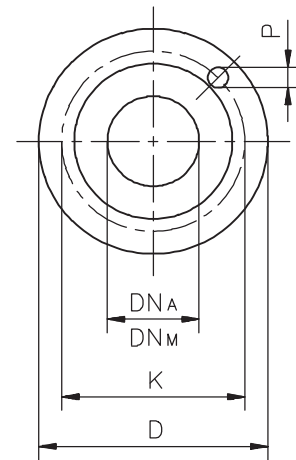
| d | v | z |
|-----|-----|----|
| M12 | 240 | 45 |

DIMENSIONI FLANGE
 Flanges dimensions

| DN _A DN _M | D | K | P | N° fori holes |
|---------------------------------|-----|-----|----|---------------|
| 32 | 140 | 100 | 18 | 4 |
| 40 | 150 | 110 | 18 | 4 |

FLANGE:
 Flange DN32 dimensioni secondo UNI 2223-2229 PN40.
 Flange DN40 dimensioni secondo UNI 2223-2229 PN16.

FLANGES:
 Flanges ND32 dimensions to UNI 2223-2229 NP40 standards.
 Flanges ND40 dimensions to UNI 2223-2229 NP16 standards.



| POMPA TIPO Pump model | MOTORE ELETTRICO Electric motor | | | | | | | | | | | |
|--------------------------|---------------------------------|-----|-----|-------------|------|-----|-----|-------------|------|----|-----|-------------|
| | 160M / 160L | | | | 180M | | | | 200L | | | |
| | N° | M | H | Peso weight | N° | M | H | Peso weight | N° | M | H | Peso weight |
| TMA 31-3 & 32-3 | | | | | | | | | | | | |
| TMA 31-4 & 32-4 | | | | | | | | | | | | |
| TMA 31-5 & 32-5 | | | | | | | | | | | | |
| TMA 31-6 & 32-6 | 903 | 60 | 250 | 102 | | | | | | | | |
| TMA 31-7 & 32-7 | 903 | 80 | 250 | 107 | | | | | | | | |
| TMA 31-8 & 32-8 | 903 | 100 | 250 | 112 | | | | | | | | |
| TMA 31-9 & 32-9 | 903 | 120 | 250 | 117 | | | | | | | | |
| TMA 31-10 & 32-10 | 906 | 70 | 260 | 146 | | | | | | | | |
| TMA 31-11 & 32-11 | 906 | 90 | 260 | 150 | | | | | | | | |
| TMA 31-12 & 32-12 | 906 | 110 | 260 | 155 | 041 | 150 | 310 | 178 | | | | |
| TMA 31-13 & 32-13 | 906 | 130 | 260 | 159 | 034 | 55 | 310 | 201 | | | | |
| TMA 31-14 & 32-14 | 906 | 145 | 260 | 164 | 034 | 85 | 310 | 205 | 034 | 95 | 330 | 221 |
| TMA 31-15 & 32-15 | 906 | 145 | 260 | 169 | 034 | 85 | 310 | 210 | 034 | 95 | 330 | 225 |

MOTORI ELETTRICI

Electric Motors

| Grandezza Frame size | Giri / min. RPM |
|-------------------------|--------------------|
| IEC | 2900 |
| | Kw |
| 90L | 2,2 |
| 100L | 3 |
| 112M | 4 |
| 132S | 5,5 - 7,5 |
| 160M | 11 - 15 |
| 160L | 18,5 |
| 180M | 22 |
| 200L | 30 - 37 |

(*) L'ESECUZIONE /R È DISPONIBILE FINO ALLA VERSIONE TMA 31-9 E TMA32-9. / Construction /R is available up to version TMA 31-9 and TMA-32-9.
 DISEGNO SCHEMATICO. DIMENSIONI IN MM CON TOLLERANZE SECONDO EN 735-1995. PESI INDICATIVI IN KG, RIFERITI A POMPE IN GHISA ESCLUSO MOTORE, NON IMPEGNATIVI. / Schematic drawing. Dimensions in mm with tolerances according to EN 735-1995 standards. Weights in Kgs, referred to pump in cast iron without motor, not certified.
 (1) DIMENSIONI IN FUNZIONE DELLA MARCA DEL MOTORE ELETTRICO INSTALLATO. / (1) Not certified dimensions according to installed motor manufacture.
 SU RICHIESTA LA BOCCA ASPIRANTE PUÒ ESSERE RUOTATA ORTOGONALMENTE SULL'ASSE LONGITUDINALE. / On request suction branch can be orthogonally rotated on longitudinal axis.

RIF. - Ref.: E.Z./C.T.

SOSTITUISCE - Replaces: 4410÷4413.2L3.201.02.A

DATA - Date: SETTEMBRE 09 - September 09

N°.: 4410-11-12-13.2L3.2001.05.01

DIMENSIONI D'INGOMBRO

Overall dimensions
POMPE CENTRIFUGHE MULTISTADIO
 Multistage centrifugal pumps
 SERIE **TMA 31 & TMA 32**
 Series

pag.2/2



TRAVAINI PUMPS USA
 Liquid Ring & Rotary Vane Vacuum Pumps and Systems

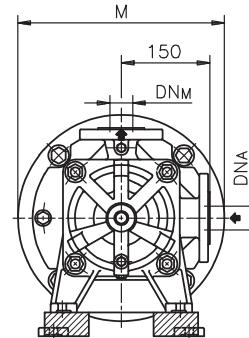
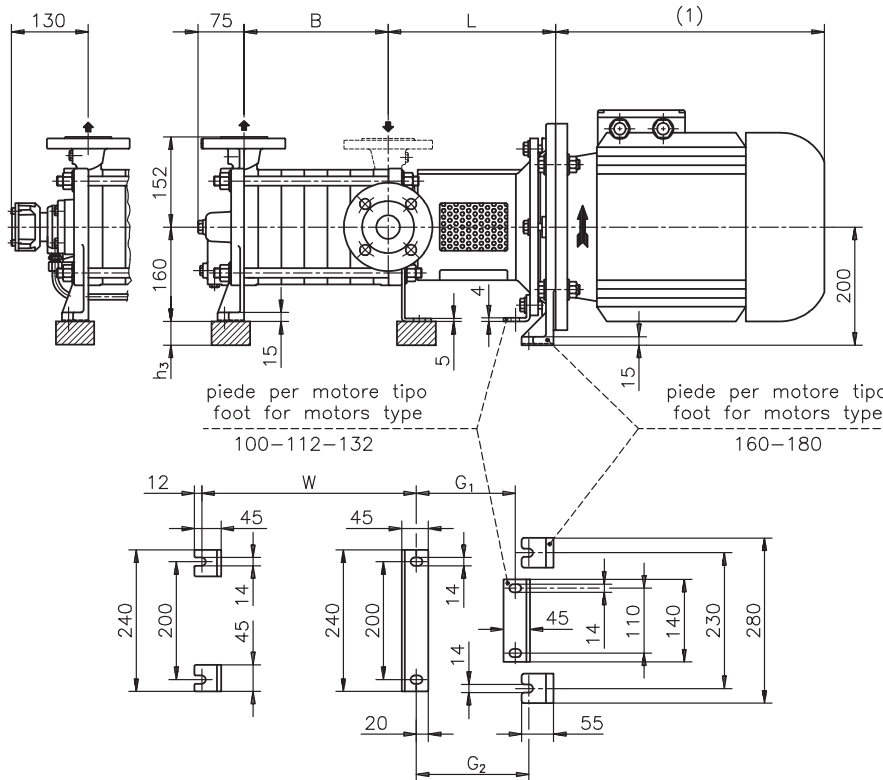
200 Newsome Drive
 Yorktown, VA 23693
 1-800-535-4243
 www.Travaini.com

Versione **MONOBLOCCO**

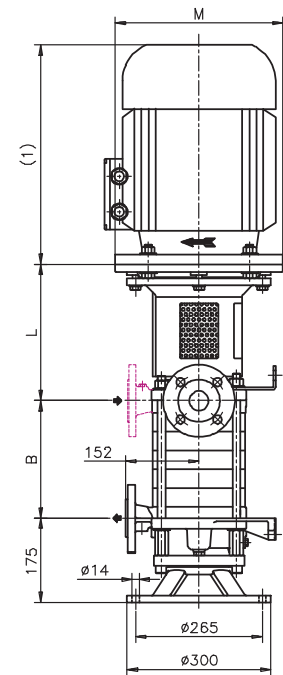
CLOSE COUPLED construction

Esecuzione **C**
 construction **C**

Esecuzione **R***
 construction **R***



Versione **VERTICALE**
 Esecuzione **R/MV**
VERTICAL construction
 construction **R/MV**



MOTORI ELETTRICI
 Electric Motors

| Grandezza Frame size | Giri/min. RPM 2900 | M |
|-------------------------|--------------------------|-----|
| IEC | Kw | |
| 100L | 3 | 250 |
| 112M | 4 | 250 |
| 132M | 5,5 - 7,5 | 300 |
| 160M | 11 - 15 | 350 |
| 160L | 18,5 | 350 |
| 180M | 22 | 350 |

| POMPA TIPO Pump model | Versione MONOBLOCCO CLOSE - COUPLED construction | | | | | | | | | | | | | |
|------------------------------|--|-----------------|----------------|-----|-----|----------------|-------------|-----|----------------|-------------|-----|----------------|----------------|-------------|
| | | | motore 100-112 | | | motore 132 | | | motore 160-180 | | | | | |
| | DN _A | DN _M | B | W | L | G ₁ | Peso weight | L | G ₁ | Peso weight | L | G ₂ | h ₃ | Peso weight |
| TMA 31-3 & 32-3 | 40 | 32 | 125 | 205 | 229 | 142 | 45 | 250 | 165 | 48 | | | | |
| TMA 31-4 & 32-4 | 40 | 32 | 164 | 244 | 229 | 142 | 50 | 250 | 165 | 53 | | | | |
| TMA 31-5 & 32-5 | 40 | 32 | 203 | 283 | 229 | 142 | 55 | 250 | 165 | 58 | | | | |
| TMA 31-6 & 32-6 | 40 | 32 | 242 | 322 | 229 | 142 | 60 | 250 | 165 | 63 | 279 | 187 | 40 | 75 |
| TMA 31-7 & 32-7 | 40 | 32 | 281 | 361 | | | | 250 | 165 | 68 | 279 | 187 | 40 | 80 |
| TMA 31-8 & 32-8 | 40 | 32 | 320 | 400 | | | | 250 | 165 | 73 | 279 | 187 | 40 | 85 |
| TMA 31-9 & 32-9 | 40 | 32 | 359 | 439 | | | | 250 | 165 | 78 | 279 | 187 | 40 | 90 |
| TMA 31-10 & 32-10 | 40 | 32 | 398 | 478 | | | | 250 | 165 | 83 | 279 | 187 | 40 | 95 |
| TMA 31-11 & 32-11 | 40 | 32 | 437 | 517 | | | | | | | 279 | 187 | 40 | 100 |
| TMA 31-12 & 32-12 | 40 | 32 | 476 | 556 | | | | | | | 279 | 187 | 40 | 105 |
| TMA 31-13 & 32-13 | 40 | 32 | 515 | 595 | | | | | | | 279 | 187 | 40 | 110 |
| TMA 31-14 & 32-14 | 40 | 32 | 554 | 634 | | | | | | | 279 | 187 | 40 | 115 |
| TMA 31-15 & 32-15 | 40 | 32 | 593 | 673 | | | | | | | 279 | 187 | 40 | 120 |

(1) Dimensioni in funzione della marca del motore installato.
 (1) Not certified dimensions according to installed motor manufacture.

(h₃) Spessori per allineamento motore - pompa, esclusi dalla fornitura.
 (h₃) Spacers for motor - pump alignment are not supplied by pompetravaini.

| | |
|---------------------------------|--|
| RIF. - Ref.: Z.A./C.T. | SOSTITUISCE - Replaces: 4410÷4413.2L0.201.01.B |
| DATA - Date: MAGGIO 98 - May 98 | N°.: 4410÷4413.2L0.201.02.B |