

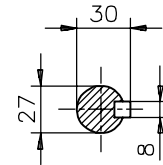
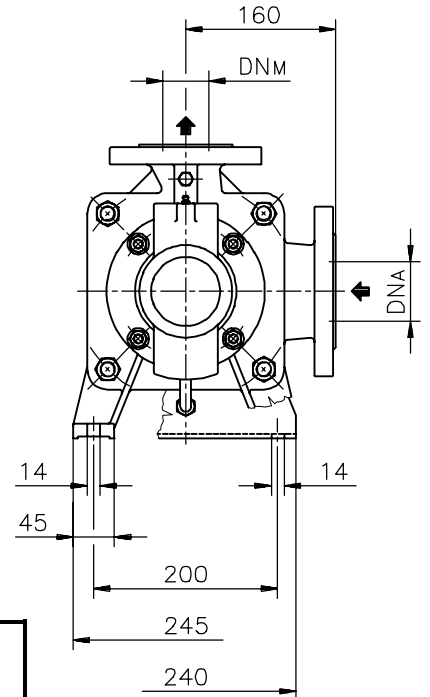
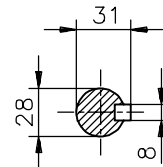
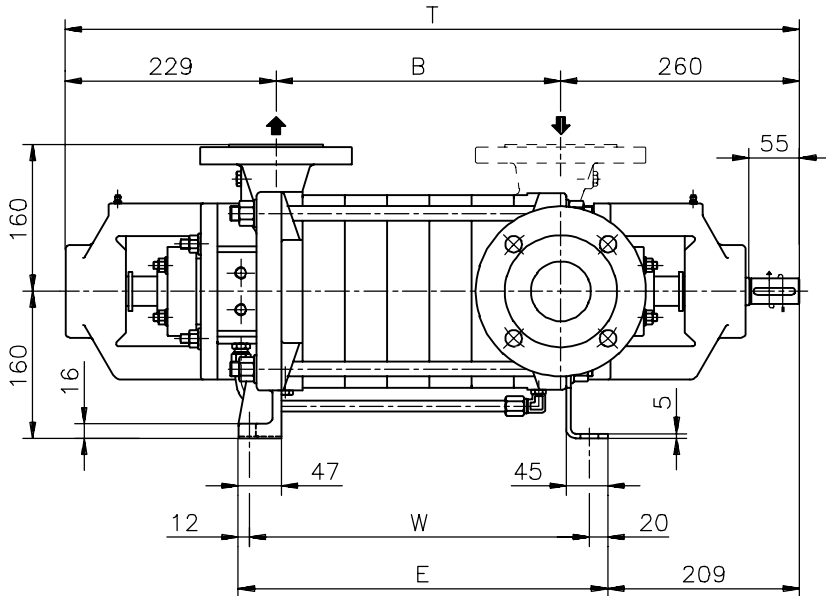
DIMENSIONI D'INGOMBRO  
Overall dimensions  
POMPE CENTRIFUGHE MULTISTADIO  
Multistage centrifugal pumps  
SERIE **TMA 40 & TMA 50**  
Series



200 Newsome Drive  
Yorktown, VA 23693  
1-800-535-4243  
www.Travaini.com

Versione ad **ASSE NUDO**

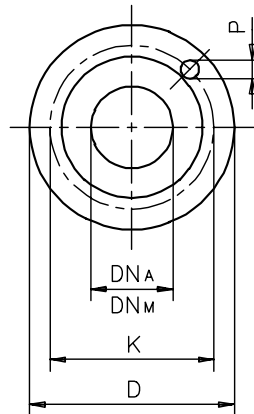
**BARESHAFT** construction



**ATTENZIONE/WARNING!**

Comando albero della versione **RINFORZATA (/5X)**  
Shaft drive end of **REINFORCED (/5X)** version

POMPA TIPO Pump model	Versione ad ASSE NUDO BARESHAFT construction						TMA 40	TMA 50
	DN <sub>A</sub>	DN <sub>M</sub>	B	T	W	E	Peso weight	Peso weight
<b>TMA 40-3 &amp; 50-3</b>	65	50	171	660	231	263	88	86
<b>TMA 40-4 &amp; 50-4</b>	65	50	217	706	277	309	95	92
<b>TMA 40-5 &amp; 50-5</b>	65	50	263	752	323	355	102	98
<b>TMA 40-6 &amp; 50-6</b>	65	50	309	798	369	401	109	104
<b>TMA 40-7 &amp; 50-7</b>	65	50	355	844	415	447	116	110
<b>TMA 40-8 &amp; 50-8</b>	65	50	401	890	461	493	123	116
<b>TMA 40-9 &amp; 50-9</b>	65	50	447	936	507	539	130	122
<b>TMA 40-10 &amp; 50-10</b>	65	50	493	982	553	585	137	128
<b>TMA 40-11 &amp; 50-11</b>	65	50	539	1028	599	631	144	134
<b>TMA 40-12 &amp; 50-12</b>	65	50	585	1074	645	677	151	140
<b>TMA 40-13</b>	65	50	631	1120	691	723	158	-
<b>TMA 40-14</b>	65	50	677	1166	737	769	165	-
<b>TMA 40-15</b>	65	50	723	1212	783	815	172	-



**FLANGE:**

Flange DN50 dimensioni secondo UNI 2223-29 PN40.  
Flange DN65 dimensioni secondo UNI 2223-29 PN16.

**FLANGES:**

Flanges ND50 dimensions to UNI 2223-29 NP40 standards.  
Flanges ND65 dimensions to UNI 2223-29 NP16

**DIMENSIONI FLANGE**

Flanges dimensions

DN <sub>A</sub> - DN <sub>M</sub>	D	K	P	N° fori holes
50	165	125	18	4
65	185	145	18	4

Disegno schematico. Dimensioni in mm con tolleranze secondo EN 735-1995. Pesi indicativi in Kg, riferiti a pompe in ghisa, non impegnativi.  
Schematic drawing. Dimensions in mm with tolerances to EN 735-1995 standards. Weights in Kgs, referred to pump in cast iron, not certified.

Su richiesta la bocca aspirante può essere ruotata ortogonalmente sull'asse longitudinale. On request suction branch can be orthogonally rotated on longitudinal axis.

RIF. - Ref.: B.V./C.T.

SOSTITUISCE - Replaces: 4403-4404.5L1.201.02

DATA - Date: LUGLIO 2007 - July 2007

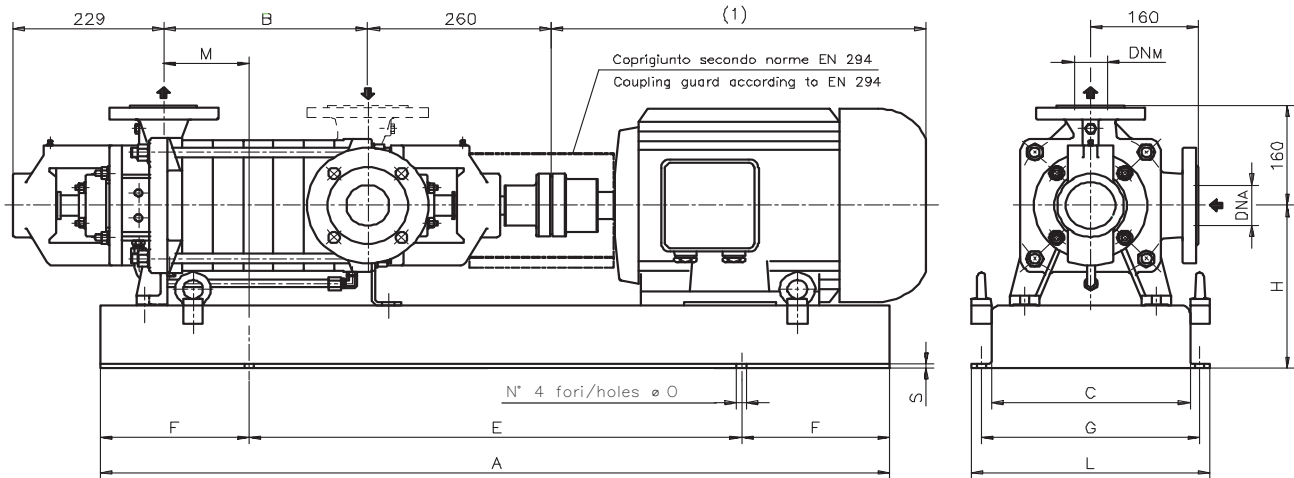
N°.: 4403-4404.5L1.201.03

DIMENSIONI D'INGOMBRO / Overall dimensions.  
 POMPE CENTRIFUGHE MONOSTADIO  
 Monostage centrifugal pumps  
 SERIE / Series  
**TMA 40 & 50** pag.1/2



200 Newsome Drive  
 Yorktown, VA 23693  
 1-800-535-4243  
 www.Travaini.com

Versione **ACCOPIATA (BASE - GIUNTO)**  
**COUPLED construction (BASEPLATE - COUPLING)**



POMPA TIPO <i>Pump model</i>	DIMENSIONI <i>Dimensions</i>			MOTORE ELETTRICO <i>Electric motor</i>																																
				132S			TMA 40			TMA 50			160M / 160L			TMA 40			TMA 50			180M			TMA 40			TMA 50			200L			TMA 40		
	DN <sub>A</sub>	DN <sub>M</sub>	B	N°	M	H	Peso	Peso	N°	M	H	Peso	Peso	N°	M	H	Peso	Peso	N°	M	H	Peso	Peso	N°	M	H	Peso	Peso	N°	M	H	Peso	Peso			
TMA 40-3 & 50-3	65	50	171	900	100	225	125	123	903	60	250	139	137	907	25	280	155	153	907	50	300	162	160	907	75	300	169	166	907	100	300	176	172			
TMA 40-4 & 50-4	65	50	217	900	120	225	132	129	903	85	250	146	143	907	50	280	162	159	907	75	300	169	166	907	100	300	176	172	907	110	300	183	178			
TMA 40-5 & 50-5	65	50	263	900	140	225	139	135	903	110	250	153	149	907	75	280	169	165	907	100	300	176	172	907	110	300	183	178	907	135	250	160	155			
TMA 40-6 & 50-6	65	50	309						903	135	250	160	155	907	95	280	176	171	907	110	300	183	178	907	135	250	160	155	907	135	250	160	155			
TMA 40-7 & 50-7	65	50	355						903	135	250	167	161	907	95	280	183	177	907	110	300	183	178	907	135	250	160	155	907	135	250	160	155			
TMA 40-8 & 50-8	65	50	401						906	150	260	185	178	907	135	310	218	211	907	135	310	218	211	907	150	260	185	178	907	150	260	185	178			
TMA 40-9 & 50-9	65	50	447						906	110	260	191	183	907	155	310	225	217	907	155	310	225	217	907	180	330	232	224	907	110	260	191	183			
TMA 40-10 & 50-10	65	50	493						906	135	260	198	189	907	180	310	232	223	907	180	310	232	223	907	180	310	232	224	907	135	260	198	189			
TMA 40-11 & 50-11	65	50	539											907	100	310	251	241	907	100	310	251	241	907	100	310	251	241	907	100	310	251	241			
TMA 40-12 & 50-12	65	50	585											907	150	310	258	247	907	150	310	258	247	907	150	310	258	247	907	150	310	258	247			
TMA 40-13	65	50	631											907	200	310	265		907	200	310	265		907	200	310	265		907	200	310	265				
TMA 40-14	65	50	677																907	230	330	279		907	230	330	279		907	230	330	279				
TMA 40-15	65	50	723																907	230	330	286		907	230	330	286		907	230	330	286				

DISEGNO SCHEMATICO. DIMENSIONI IN MM CON TOLLERANZE SECONDO EN 735-1995. PESI INDICATIVI IN KG, RIFERITI A POMPE IN GHISA ESCLUSO MOTORE, NON IMPEGNATIVI. / Schematic drawing. Dimensions in mm with tolerances to EN 735-1995 standards. Weights in Kgs, referred to pump in cast iron without motor, not certified.  
 (1) DIMENSIONI IN FUNZIONE DELLA MARCA DEL MOTORE ELETTRICO INSTALLATO. / (1) Not certified dimensions according to installed motor manufacture.  
 SU RICHIESTA LA BOCCA ASPIRANTE PUÒ ESSERE RUOTATA ORTOGONALMENTE SULL'ASSE LONGITUDINALE. / On request suction branch can be orthogonally rotated on longitudinal axis.

RIF. - Ref.: E.Z./C.T. SOSTITUISCE - Replaces: 4403-4404.5L3.201.04.A  
 DATA - Date: SETTEMBRE 2009 - September 2009 N°.: 4403-04.5L3.2001.06.01

**DIMENSIONI D'INGOMBRO / Overall dimensions.**  
**POMPE CENTRIFUGHE MONOSTADIO**  
*Monostage centrifugal pumps*  
**SERIE / Series**  
**TMA 40 & 50** pag.2/2

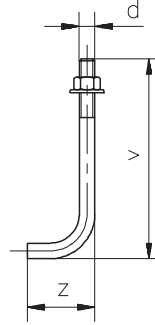


200 Newsome Drive  
 Yorktown, VA 23693  
 1-800-535-4243  
 www.Travaini.com

Versione **ACCOPPIATA (BASE - GIUNTO)**  
**COUPLED construction (BASEPLATE - COUPLING)**

BASAMENTI  
*Base plates*

N°	A	C	E	F	L	G	S	ØO
900	960	310	600	180	370	340	5	14
903	1170	350	770	200	410	380	6	14
906	1400	350	950	225	410	380	6	14
907	1200	420	900	150	510	470	6	18
034	1700	450	1100	300	590	540	7	18
039	2150	540	1600	275	680	630	7	18
041	1350	420	900	225	560	510	7	18
042	1800	500	1400	200	640	590	7	18



BULLONI DI FONDAZIONE  
(OPTIONAL)  
*Foundation bolts*

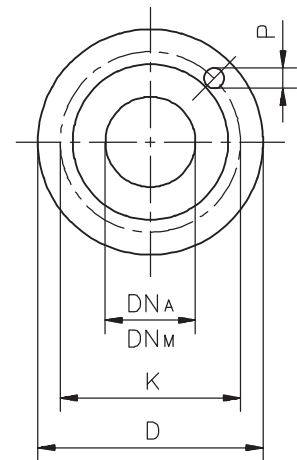
d	v	z
M12	240	45

DIMENSIONI FLANGE  
*Flanges dimensions*

DN <sub>A</sub> DN <sub>M</sub>	D	K	P	N° fori holes
50	165	125	18	4
65	185	145	18	4

**FLANGE:**  
 Flange DN50 dimensioni secondo UNI 2223-2229 PN40.  
 Flange DN65 dimensioni secondo UNI 2223-2229 PN16.

**FLANGES:**  
 Flanges ND50 dimensions to UNI 2223-2229 NP40 standards.  
 Flanges ND65 dimensions to UNI 2223-2229 NP16 standards.



MOTORI ELETTRICI  
*Electric Motors*

Grandezza <i>Frame size</i>	Giri / min. <i>RPM</i>
IEC	2900
	Kw
132S	5,5 - 7,5
160M	11 - 15
160L	18,5
180M	22
200L	30 - 37
225M	45
250M	55
280S	75

POMPA TIPO <i>Pump model</i>	MOTORE ELETTRICO <i>Electric motor</i>																										
	225M			TMA 40			TMA 50			250M			TMA 40			TMA 50			280S			TMA 40			TMA 50		
	N°	M	H	Peso weight	Peso weight	N°	M	H	Peso weight	Peso weight	N°	M	H	Peso weight	Peso weight	N°	M	H	Peso weight	Peso weight	N°	M	H	Peso weight	Peso weight		
TMA 40-3 & 50-3																											
TMA 40-4 & 50-4																											
TMA 40-5 & 50-5	034	-60	355	221	217																						
TMA 40-6 & 50-6	034	0	355	228	223	042	-30	380	253	248																	
TMA 40-7 & 50-7	034	0	355	235	229	042	-30	380	260	254																	
TMA 40-8 & 50-8	034	0	355	242	235	042	0	380	267	260	039	0	410	264	257												
TMA 40-9 & 50-9	034	25	355	249	241	042	0	380	274	266	039	0	410	271	263												
TMA 40-10 & 50-10	034	60	355	256	247	042	20	380	281	272	039	0	410	278	269												
TMA 40-11 & 50-11	034	100	355	263	253	042	40	380	288	278	039	0	410	285	275												
TMA 40-12 & 50-12	034	150	355	270	259	042	80	380	295	284	039	0	410	292	281												
TMA 40-13	034	200	355	277		042	130	380	302		039	0	410	299													
TMA 40-14	034	230	355	284		042	150	380	309		039	30	410	306													
TMA 40-15	034	230	355	291		042	150	380	316		039	70	410	313													

DISEGNO SCHEMATICO. DIMENSIONI IN MM CON TOLLERANZE SECONDO EN 735-1995. PESI INDICATIVI IN KG, RIFERITI A POMPE IN GHISA ESCLUSO MOTORE, NON IMPEGNATIVI. / Schematic drawing. Dimensions in mm with tolerances to EN 735-1995 standards. Weights in Kgs, referred to pump in cast iron without motor, not certified.  
 (1) DIMENSIONI IN FUNZIONE DELLA MARCA DEL MOTORE ELETTRICO INSTALLATO. / (1) Not certified dimensions according to installed motor manufacture.  
 SU RICHIESTA LA BOCCA ASPIRANTE PUÒ ESSERE RUOTATA ORTOGONALMENTE SULL'ASSE LONGITUDINALE. / On request suction branch can be orthogonally rotated on longitudinal axis.

RIF. - Ref.: E.Z./C.T.	SOSTITUISCE - Replaces: 4403-4404.5L3.201.05.B
DATA - Date: SETTEMBRE 2009 - September 2009	N°.: 4403-04.5L3.2001.06.02