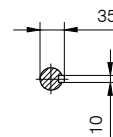
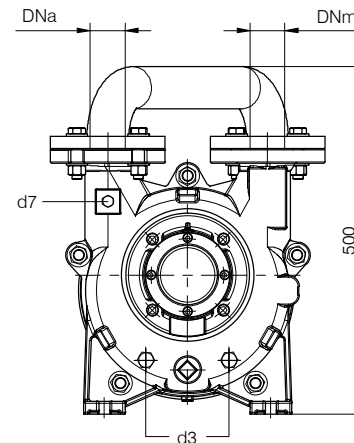




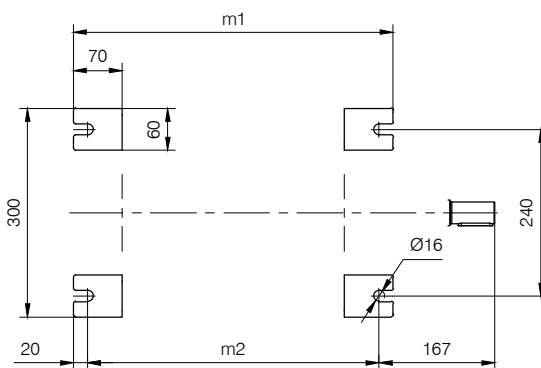
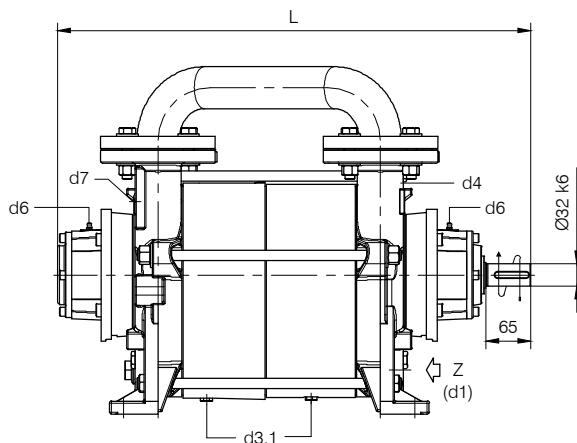
TRAVAINI
PUMPS USA

200 Newsome Drive
 Yorktown, VA 23693
 1-800-535-4243
 www.Travaini.com

BARESHAF construction



Versione ad **ASSE NUDO**



Nota / Note :

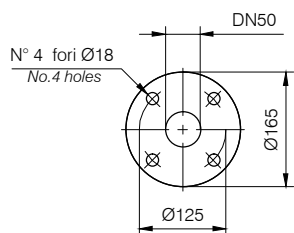
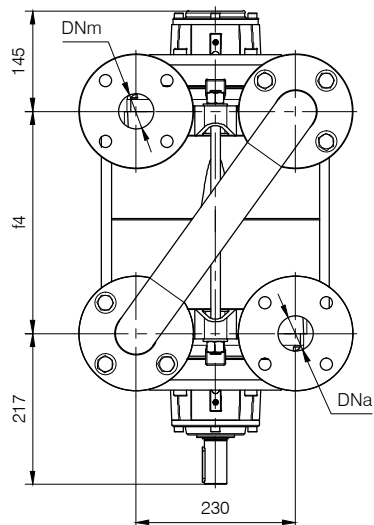
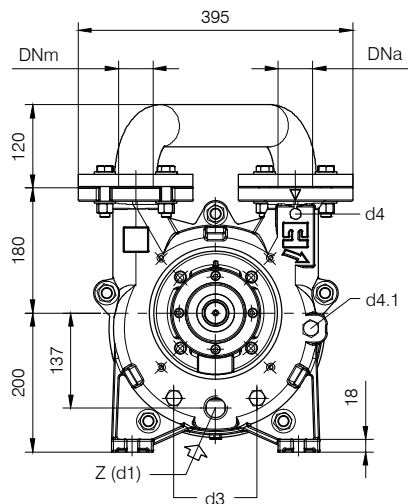
Lt Quantità di acqua all'asse dell'albero in litri
 Water quantity at shaft axis in liters

Mi Momento di Inerzia Max all'avviamento
 Max Moment of Inertia at start-up

- d1 Connessione filettata G 1 - per ingresso alimentazione
 G 1 threaded connection - for liquid supply inlet
- d3 Attacco tappato G 1/2 - per scarico corpo pompa
 G 1/2 plugged connection - for pump casing drain
- d3.1 Attacco tappato G 1/4 - per scarico corpo pompa
 G 1/4 plugged connection - for pump casing drain
- d4 Attacco tappato G 1/4 - per manovacuometro
 G 1/4 plugged connection - for manovacuum gauge
- d4.1 Attacco tappato G 1/2 - connessione ausiliaria per valvola automatica di drenaggio
 G 1/2 plugged connection - auxiliary connection for automatic draining valve
- d6 Connessione ingrassatore - per lubrificazione cuscinetti tipo 6308
 Greaser connection - for ball bearings type 6308 lubrication
- d7 Attacco tappato G 1/4 - per valvola anticavitazione
 G 1/4 plugged connection - for anticavitation valve

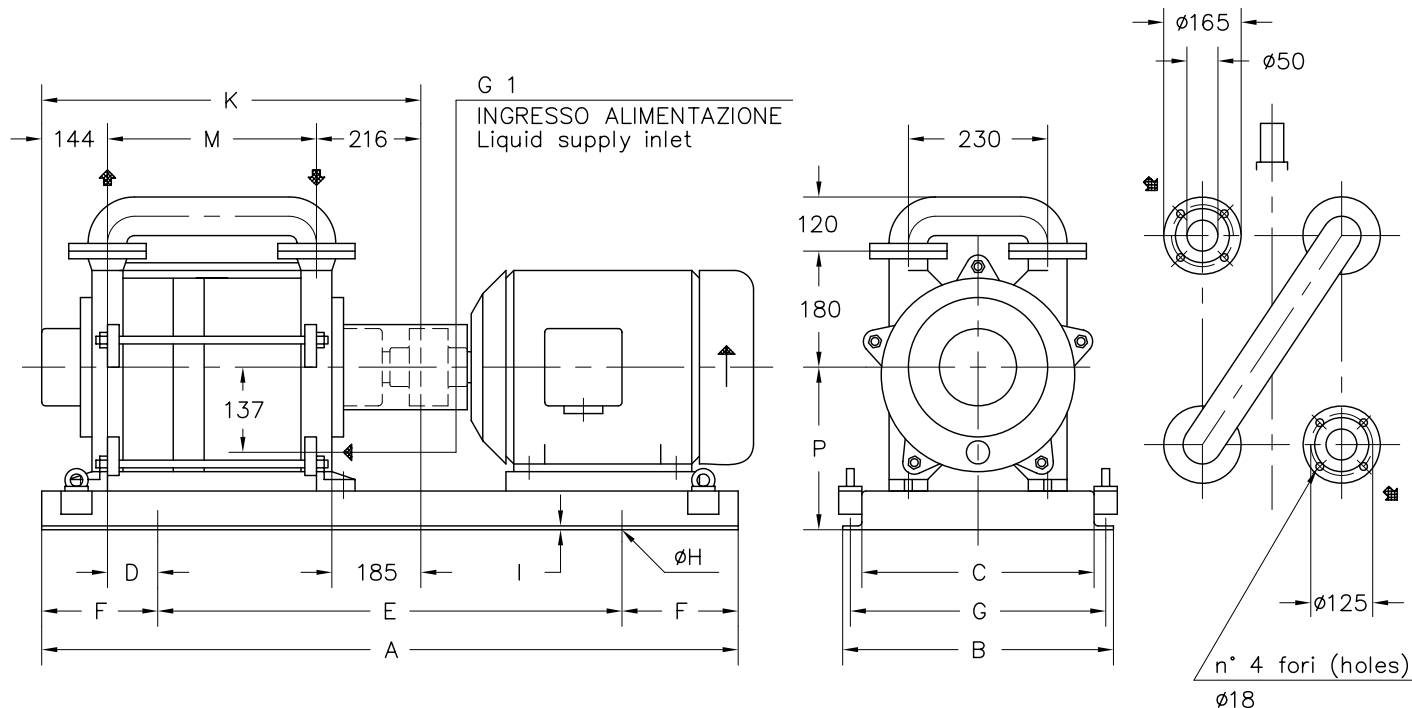
POMPA TIPO Pump type	Dimensioni costruttive Construction dimensions						Peso Weight	Mi kgm ²	Lt
	DNa	DNm	L	f4	m1	m2			
TRHB 50-280	50	50	682	320	460	420	130	0.14	9
TRHB 50-340	50	50	742	380	520	480	140	0.16	10
TRHB 50-420	50	50	782	420	560	520	145	0.2	12

Disegno schematico. Dimensioni in mm con tolleranze secondo EN 735-1995.
 Pesi indicativi in Kg, riferiti a pompe in ghisa escluso motore, non impegnativi.
 Schematic drawing. Dimensions in mm with tolerances according to EN 735-1995 standards.
 Weights in Kgs, referred to pumps in cast iron without motor, not binding.



FLANGE: Dimensioni secondo UNI 2223 PN10
 FLANGES: Dimensions according to UNI 2223 NP10

Versione **ACCOPIATA (BASE-GIUNTO)**
COUPLED construction (BASEPLATE-COUPLING)



POMPA TIPO Pump type	MOTORE A 4 POLI 4 Poles Motor UNEL-MEC-B3		BASE Base-plate N°	POMPA Pump											PESO Weight ①	
	TIPO Type	KW		A	B	C	D	E	F	G	H	I	K	M		P
TRHB 50-280/C	132 MB	9	903	1170	410	350	70	770	200	380	14	6	679	319	290	195
	160 M	11					130									192
	160 L	15					130									195
TRHB 50-340/C	160 M	11	906	1400	560	420	50	950	510	18	7	739	379	300	212	
	160 L	15					950								215	
	180 M	18,5					041								1350	560
TRHB 50-420/C	160 M	11	906	1400	410	350	100	950	380	14	6	779	419	300	217	
	160 L	15					100								950	380
	180 M	18,5	041	1350	560	420	140	900	510	18	7	779	419	330	241	
	180 L	22					140								900	510

FLANGE SECONDO UNI 2223 PN 10
 Flanges according to UNI 2223 NP 10

① PESO ESCLUSO MOTORE
 Weight without motor

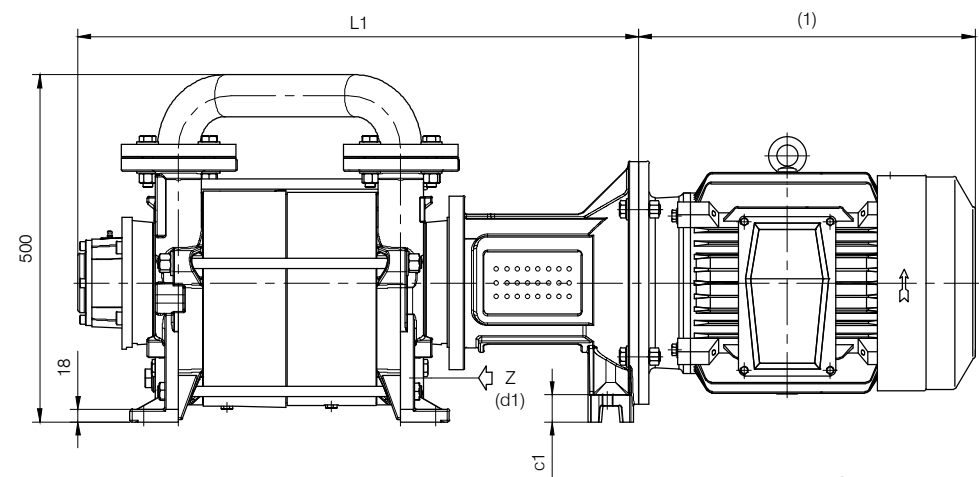
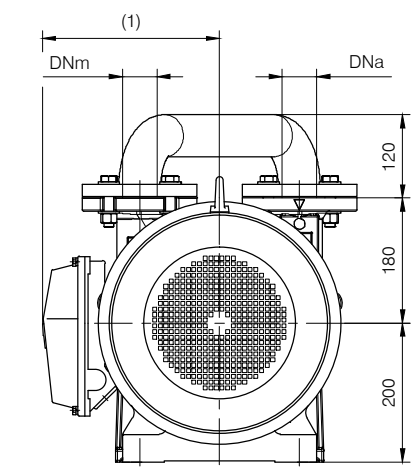
DISEGNO SCHEMATICO - DIMENSIONI IN MM. CON TOLLERANZE SECONDO EN 735-1995 E PESI IN KG. NON IMPEGNATIVI
 Schematic drawing - Dimensions in mm. with tolerances according to EN 735-1995 and weights in kgs. not binding

DIMENSIONE D'INGOMBRO / Overall dimensions
 POMPE PER VUOTO AD ANELLO DI LIQUIDO
 Liquid ring vacuum pumps

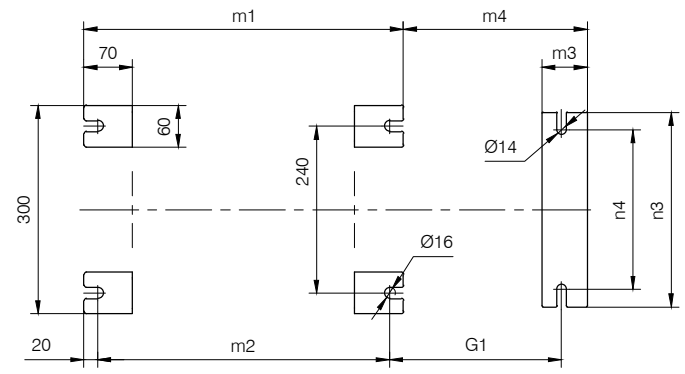
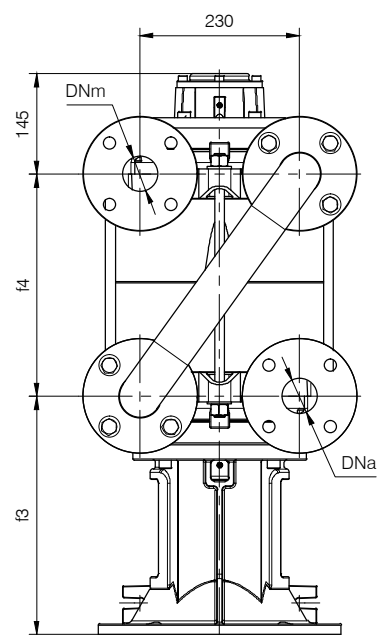
SERIE / Series
TRHB serie 50 /C-M (pag.2/2)

TRAVAINI
PUMPS USA
 Liquid Ring & Rotary Vane Vacuum Pumps and Systems
 200 Newsome Drive
 Yorktown, VA 23693
 1-800-535-4243
 www.Travaini.com

Versione **MONOBLOCCO** **CLOSE-COUPLED construction**



d1 Connessione filettata G 1 - per ingresso alimentazione
 G 1 threaded connection - for liquid supply inlet



MOTORI ELETTRICI Electric Motors B5 - 4 poli / poles		
Grandezza Frame size IEC	Giri/min. RPM 1480 50Hz	
	kW	HP
132 M	9	12.5
160 M	11	15
160 L	15	20
180 M	18.5	25

(1) Dimensioni in funzione della marca del motore installato.
 (1) Dimensions depend on installed motor manufacturer.

POMPA TIPO Pump type	Motore Motor	Dimensioni costruttive Monoblocco Close-coupled construction dimensions								Peso Weight
		L1	f3	G1	m3	m4	n3	n4	c1	
TRHB 50-280	132 M	772	307	217	44	221	140	110	4	150
	160 M	808	343	248	65	265	280	230	39	163
TRHB 50-340	160 M	868	343	248	65	265	280	230	39	173
	160 L									
TRHB 50-420	160 L	908	343	248	65	265	280	230	39	178
	180 M									

Disegno schematico. Dimensioni in mm con tolleranze secondo EN 735-1995.
 Pesì indicativi in Kg, riferiti a pompe in ghisa escluso motore, non impegnativi.
 Schematic drawing. Dimensions in mm with tolerances according to EN 735-1995 standards.
 Weights in Kgs, referred to pumps in cast iron without motor, not binding.

RIF. - Ref.: M.L./C.T. DOCUMENTO N. - Document no.: 6550-51-52-2L2-2001.06.02
 DATA - Date: 02-2013 SOSTITUISCE DOC. - Replaces Doc. (ITEM): 6550-51-52-2L1-2001.05.02 (000021R)
 ITEM n° D00209R