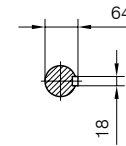
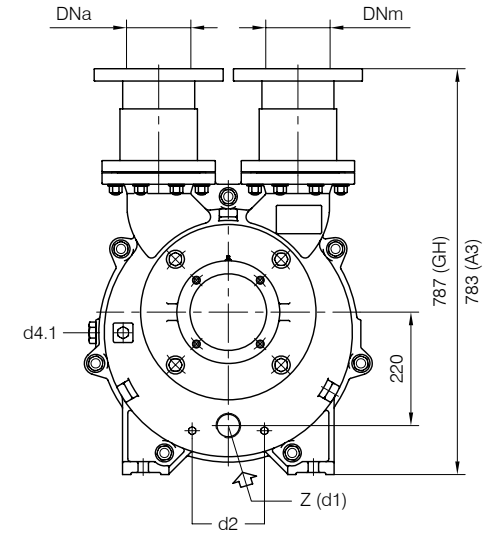
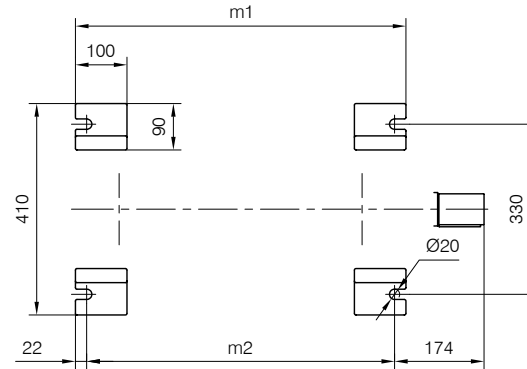
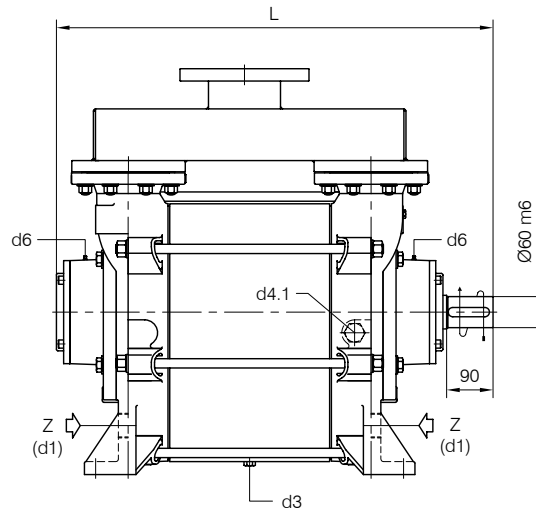


BARESHAFT construction



Versione ad ASSE NUDO



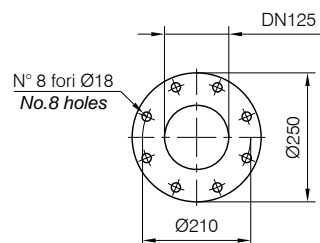
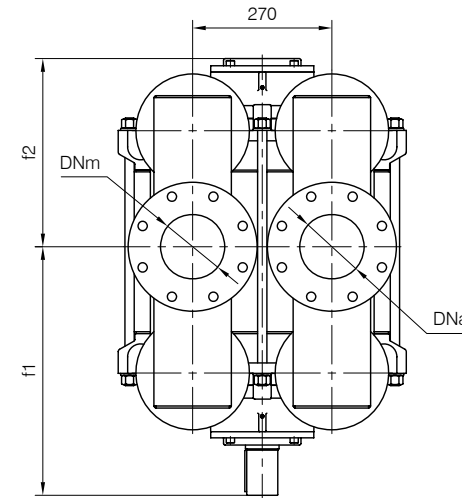
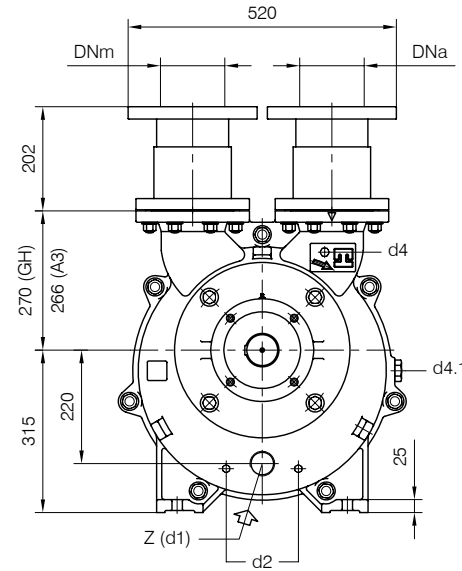
Nota / Note :

- Lt Quantità di acqua all'asse dell'albero in litri
Water quantity at shaft axis in liters
- Mi Momento di Inerzia Max all'avviamento
Max Moment of Inertia at start-up
- (GH) Pompa in ghisa e sue derivate
Cast iron pumps and derivatives
- (A3) Pompa in acciaio inox e sue derivate
Stainless steel pumps and derivatives

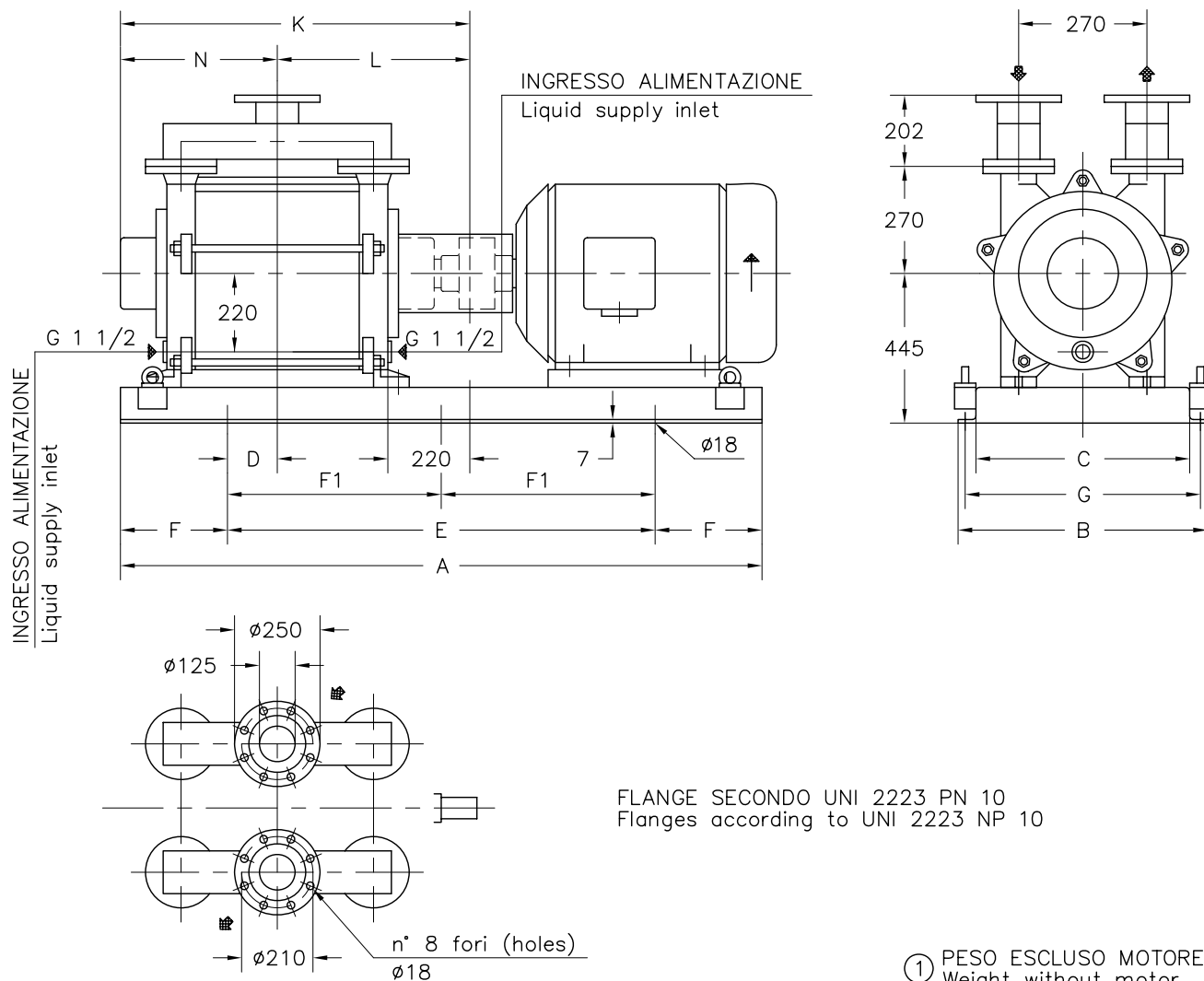
POMPA TIPO Pump type	Dimensioni costruttive		Construction dimensions							
	DNa	DNm	L	f1	f2	m1	m2	Peso Weight	Mi kgm ²	Lt
TRSE 125-1250	125	125	847	482	365	641	597	436	1.7	28
TRSE 125-1550	125	125	947	532	415	741	697	462	2.2	34

Disegno schematico. Dimensioni in mm con tolleranze secondo EN 735-1995.
 Pesì indicativi in Kg, riferiti a pompe in ghisa escluso motore, non impegnativi.
 Schematic drawing. Dimensions in mm with tolerances according to EN 735-1995 standards.
 Weights in Kgs, referred to pumps in cast iron without motor, not binding.

FLANGE: Dimensioni secondo UNI 2223 PN10
 FLANGES: Dimensions according to UNI 2223 NP10



Versione **ACCOPPIATA (BASE-GIUNTO)**
COUPLED construction (BASEPLATE-COUPLING)



POMPA TIPO Pump type	MOTORE A 6 POLI 6 Poles Motor UNEL-MEC-B3		BASE Base-plate N°	POMPA Pump								PESO Weight ①		
	Tipo/Type	KW		A	B	C	D	E	F	F1	G		L	N
TRSE 125-1250/C	225 M	30	034	1700	590	450	220	1100	300	-	540	482	365	599
	250 M	37	042	1800	640	500		1400	200	700	590			596
	280 S	45	039	2150	680	540	320	1600	275	800	630	532	415	608
	280 M	55					360							634
TRSE 125-1550/C	280 S	45	039	2150	680	540	360	1600	275	800	630	532	415	634
	280 M	55												
	315 S	75												

DISEGNO SCHEMATICO - DIMENSIONI IN MM. CON TOLLERANZE SECONDO EN 735-1995 E PESI IN KG. NON IMPEGNATIVI
 Schematic drawing - Dimensions in mm. with tolerances according to EN 735-1995 and weights in kgs. not binding