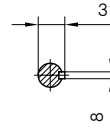
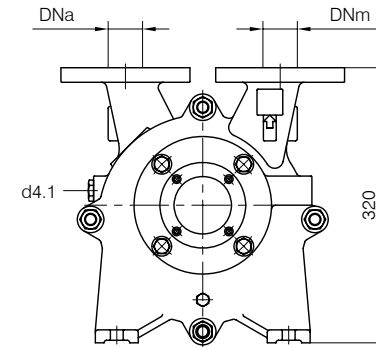




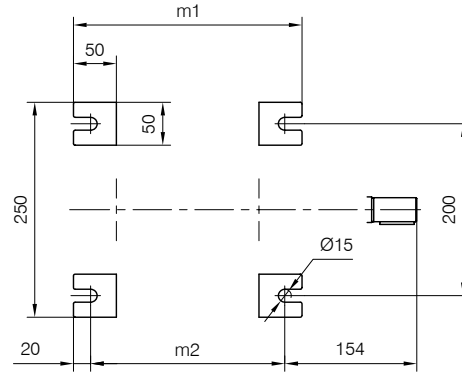
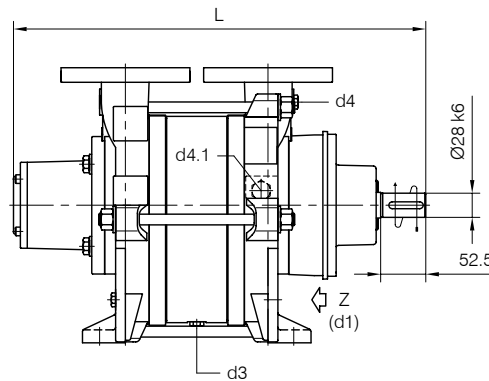
TRAVAINI
PUMPS USA
 Liquid Ring & Rotary Vane Vacuum Pumps and Systems

200 Newsome Drive
 Yorktown, VA 23693
 1-800-535-4243
 www.Travaini.com

BARESHAF construction



Versione ad **ASSE NUDO**



- d1 Connessione filettata G 1/2 - per ingresso alimentazione
 G 1/2 threaded connection - for liquid supply inlet
- d3 Attacco tappato G 1/4 - per scarico corpo pompa
 G 1/4 plugged connection - for pump casing drain
- d4 Attacco tappato G 1/4 - per manovotometro
 G 1/4 plugged connection - for manovacuum gauge
- d4.1 Attacco tappato G 1/2 - connessione ausiliaria per valvola automatica di drenaggio
 G 1/2 plugged connection - auxiliary connection for automatic draining valve

POMPA TIPO Pump type	Dimensioni costruttive Construction dimensions						Peso Weight	Mi kgm ²	Lt
	DNa	DNm	L	f4	m1	m2			
TRSC 40-55	40	40	440	126	226	186	54	0.035	3.2
TRSC 40-80	40	40	460	146	246	206	57	0.040	3.5
TRSC 40-100	40	40	480	166	266	226	60	0.045	4

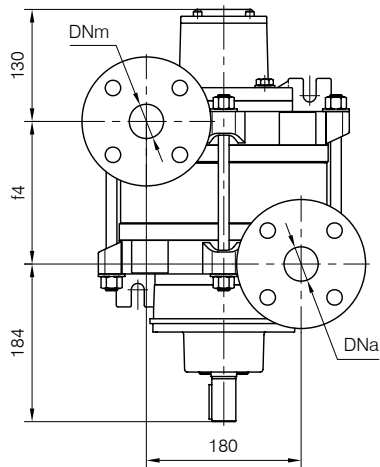
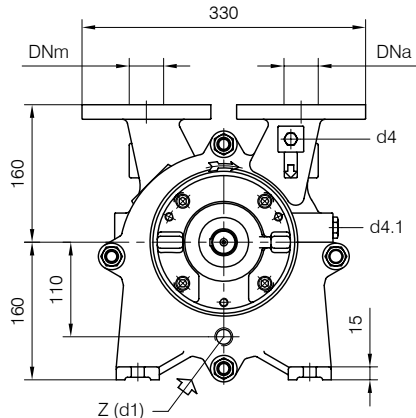
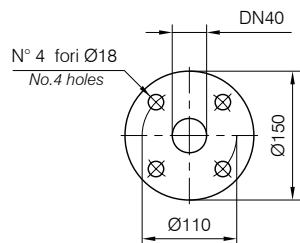
Disegno schematico. Dimensioni in mm con tolleranze secondo **EN 735-1995**.
 Pesì indicativi in Kg, riferiti a pompe in ghisa escluso motore, non impegnativi.
 Schematic drawing. Dimensions in mm with tolerances according to **EN 735-1995** standards.
 Weights in Kgs, referred to pumps in cast iron without motor, not binding.

Nota / Note :

Lt Quantità di acqua all'asse dell'albero in litri
 Water quantity at shaft axis in liters

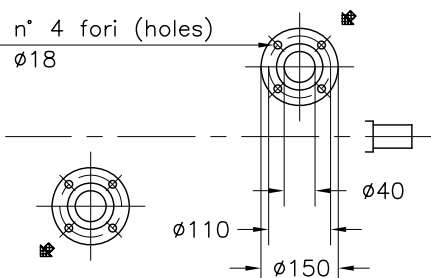
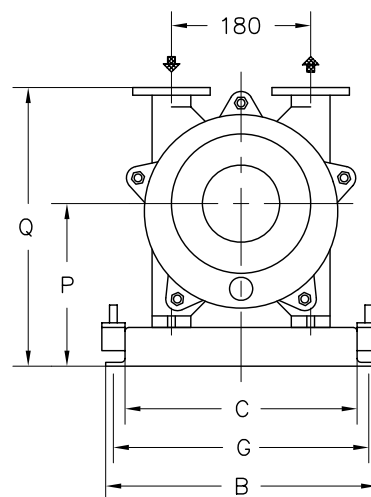
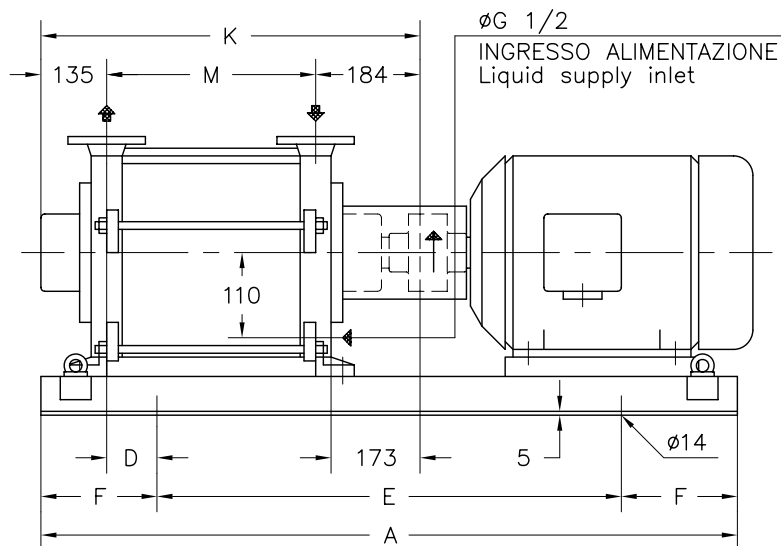
Mi Momento di Inerzia Max all'avviamento
 Max Moment of Inertia at start-up

FLANGE: Dimensioni secondo UNI 2223 PN10
 FLANGES: Dimensions according to UNI 2223 NP10





Versione **ACCOPPIATA (BASE-GIUNTO)**
COUPLED construction (BASEPLATE-COUPLING)



FLANGE SECONDO UNI 2223 PN 10
 Flanges according to UNI 2223 NP 10

① PESO ESCLUSO MOTORE
 Weight without motor

POMPA TIPO Pump type	MOTORE A 4 POLI 4 Poles Motor UNEL-MEC-B3		BASE Base-plate N°	POMPA Pump										PESO Weight ①													
		KW		A	B	C	D	E	F	G	K	M	P		Q												
TRSC 40-55/C	100 LA	2,2	901	770	350	290	60	420	175	320	444	125	220	380	79												
	100 LB	3																									
TRSC 40-80/C	100 LA	2,2																80					464	145	220	380	82
	100 LB	3																									
	112 M	4																									
TRSC 40-100/C	100 LB	3					900									960	370	310	90	600	180	340	484	165	225	385	98
	112 M	4																									
	132 SA	5,5																									

DISEGNO SCHEMATICO - DIMENSIONI IN MM. CON TOLLERANZE SECONDO EN 735-1995 E PESI IN KG. NON IMPEGNATIVI
 Schematic drawing - Dimensions in mm. with tolerances according to EN 735-1995 and weights in kgs. not binding

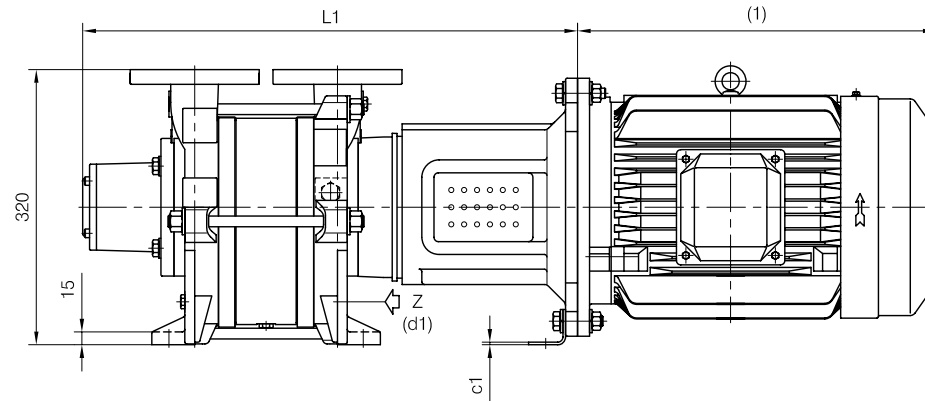


TRAVAINI
PUMPS USA
 Liquid Ring & Rotary Vane Vacuum Pumps and Systems

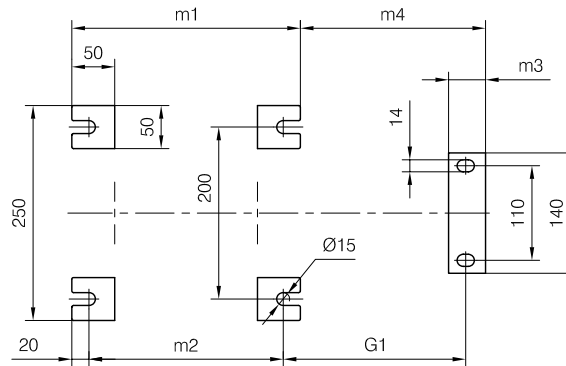
200 Newsome Drive
 Yorktown, VA 23693
 1-800-535-4243
 www.travaini.com

CLOSE-COUPLED construction

Versione **MONOBLOCCO**



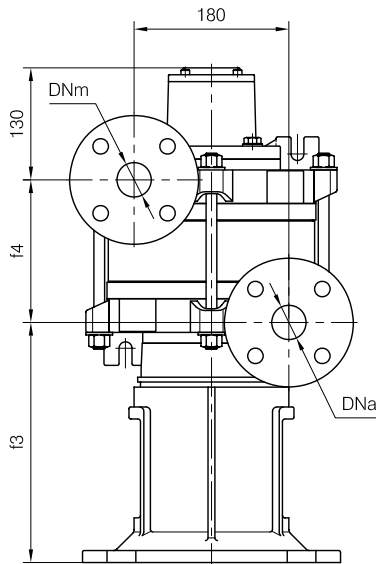
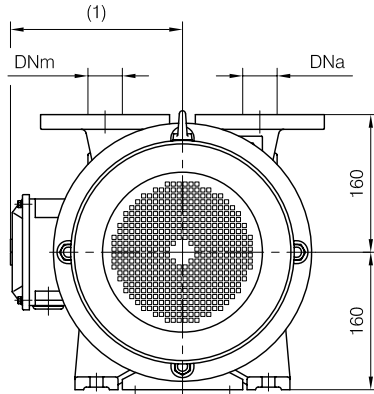
d1 Connessione filettata G 1/2 - per ingresso alimentazione
 G 1/2 threaded connection - for liquid supply inlet



(1) Dimensioni in funzione della marca del motore installato.
 (1) Dimensions depend on installed motor manufacturer.

MOTORI ELETTRICI Electric Motors B5 - 4 poli / poles		
Grandezza Frame size IEC	Giri/min. RPM 1480 50Hz	
	kW	HP
100 L	2.2	3
100 L	3	4
112 M	4	5.5
132 S	5.5	7.5

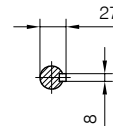
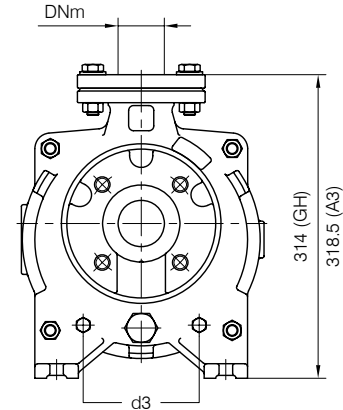
Dimensioni costruttive Monoblocco		Close-coupled construction dimensions						
POMPA TIPO Pump type	Motore Motor	L1	f3	G1	m3	m4	c1	Peso Weight
TRSC 40-55	100 L	514	258	187	44	191	4	69
	112 M	534	258	187	44	191	4	72
TRSC 40-100	100 L	554	258	187	44	191	4	75
	112 M	575	279	212	43	215	3	78
	132 M							



Disegno schematico. Dimensioni in mm con tolleranze secondo EN 735-1995.
 Pesì indicati in Kg, riferiti a pompe in ghisa escluso motore, non impegnativi.
 Schematic drawing. Dimensions in mm with tolerances according to EN 735-1995 standards.
 Weights in Kgs, referred to pumps in cast iron without motor, not binding.

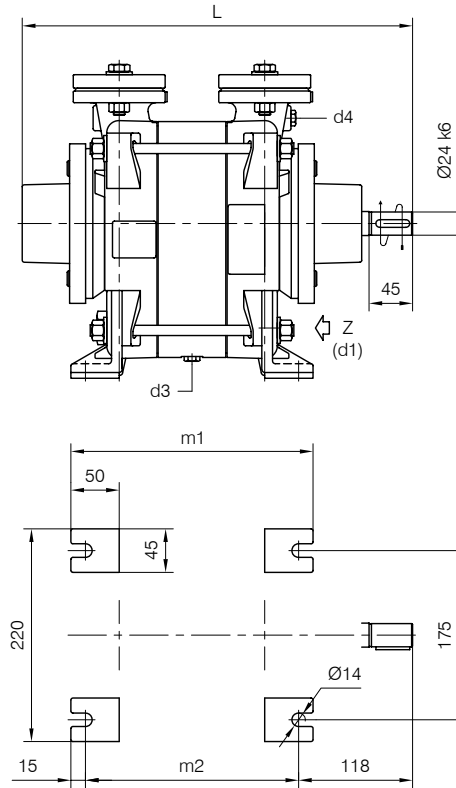


BARESHAF construction



- d1 Connessione filettata G 3/4 - per ingresso alimentazione
G 3/4 threaded connection - for liquid supply inlet
- d3 Attacco tappato G 1/4 - per scarico corpo pompa
G 1/4 plugged connection - for pump casing drain
- d4 Attacco tappato G 1/4 - per manovuotometro
G 1/4 plugged connection - for manovacuum gauge

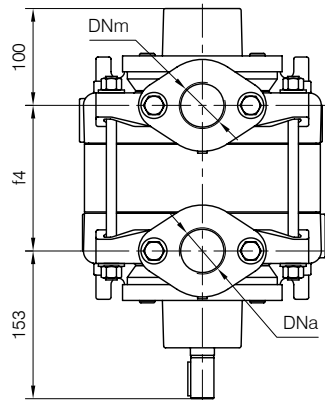
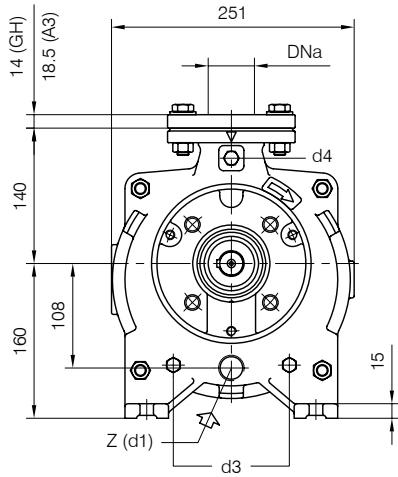
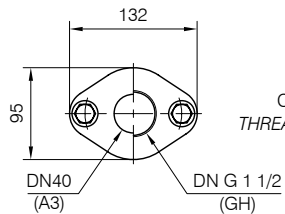
Versione ad **ASSE NUDO**



Nota / Note :

- Lt Quantità di acqua all'asse dell'albero in litri
Water quantity at shaft axis in liters
- Mi Momento di Inerzia Max all'avviamento
Max Moment of Inertia at start-up
- (GH) Pompa in ghisa e sue derivate
Cast iron pumps and derivatives
- (A3) Pompa in acciaio inox e sue derivate
Stainless steel pumps and derivatives

CONTROFLANGE FILETTATE: Dimensioni secondo UNI 2224 PN6
 THREADED COMPANION FLANGES: Dimensions according to UNI 2224 NP6



POMPA TIPO Pump type	Dimensioni costruttive Construction dimensions						Peso Weight	Mi kgm ²	Lt
	DNa	DNm	L	f4	m1	m2			
TRSE 40-55	G 1 1/2 (GH)	G 1 1/2 (GH)	364	111	211	181	34	0.035	3
	DN40 (A3)	DN40 (A3)							
TRSE 40-80	G 1 1/2 (GH)	G 1 1/2 (GH)	384	131	231	201	37	0.040	3.3
	DN40 (A3)	DN40 (A3)							
TRSE 40-100	G 1 1/2 (GH)	G 1 1/2 (GH)	404	151	251	221	39	0.045	3.6
	DN40 (A3)	DN40 (A3)							
TRSE 40-150	G 1 1/2 (GH)	G 1 1/2 (GH)	434	181	281	251	44	0.050	4
	DN40 (A3)	DN40 (A3)							

Disegno schematico. Dimensioni in mm con tolleranze secondo EN 735-1995. Pesì indicativi in Kg, riferiti a pompe in ghisa escluso motore, non impegnativi.
 Schematic drawing. Dimensions in mm with tolerances according to EN 735-1995 standards. Weights in Kgs, referred to pumps in cast iron without motor, not binding.

DIMENSIONE D'INGOMBRO / Overall dimensions
 POMPE PER VUOTO AD ANELLO DI LIQUIDO

Liquid ring vacuum pumps

SERIE / Series

TRSE serie 40 / C



**TRAVAINI
 PUMPS USA**

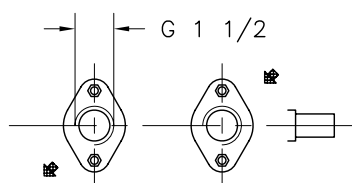
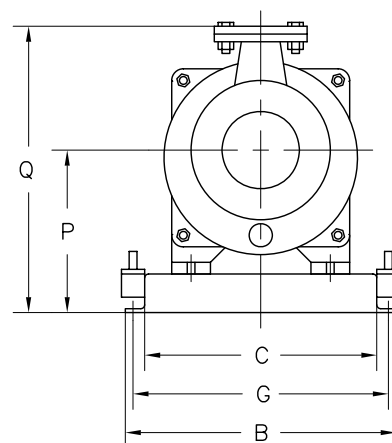
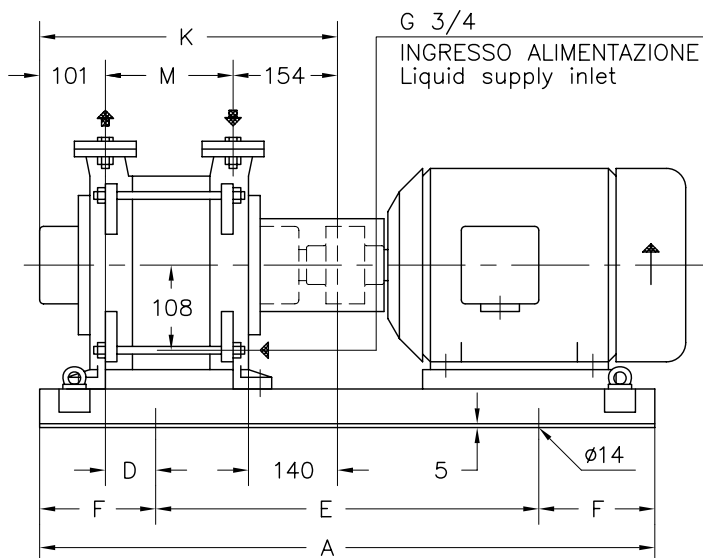
Liquid Ring & Rotary Vane Vacuum Pumps and Systems

200 Newsome Drive
 Yorktown, VA 23693

1-800-535-4243

www.Travaini.com

Versione **ACCOPPIATA (BASE-GIUNTO)**
COUPLED construction (BASEPLATE-COUPLING)



CONTROFLANGE FILETTATE
 FLANGE SECONDO UNI 2224 PN 6
 Threaded companion flanges
 Flanges according to UNI 2224 NP 6

POMPA TIPO Pump type	MOTORE A 4 POLI 4 Poles Motor UNEL-MEC-B3		BASE Base-plate N°	POMPA Pump										PESO Weight ①							
	TIPO/Type	KW		A	B	C	D	E	F	G	K	M	P		Q						
TRSE 40-55/C	100 LA	2,2	901	770	350	290	60	420	175	320	365	110	220	376	59						
	100 LB	3																			
TRSE 40-80/C	100 LA	2,2					80									90	405	150	225	381	77
	100 LB	3																			
	112 M	4																			
TRSE 40-100/C	100 LB	3					900									960	370	310	30	600	180
	112 M	4	901	770	350	290	0	420	175	320	435	180	220	376	69						
TRSE 40-150/C	132 SA	5,5	900	960	370	310	0	600	180	340			225	381	77						
	132 MA	7,5	900	960	370	310	0	600	180	340			225	381	82						

① PESO ESCLUSO MOTORE
 Weight without motor

DISEGNO SCHEMATICO - DIMENSIONI IN MM. CON TOLLERANZE SECONDO EN 735-1995 E PESI IN KG. NON IMPEGNATIVI
 Schematic drawing - Dimensions in mm. with tolerances according to EN 735-1995 and weights in kgs. not binding

RIF.-Ref.: E.Z./C.T. DOCUMENTO N. - Document no.: 6030-31-32-33.5L3.2001.03.01

DATA -Date: 07-2009 SOSTITUISCE DOC. - Replaces Doc. (ITEM): 6030-3.5L3.201.02

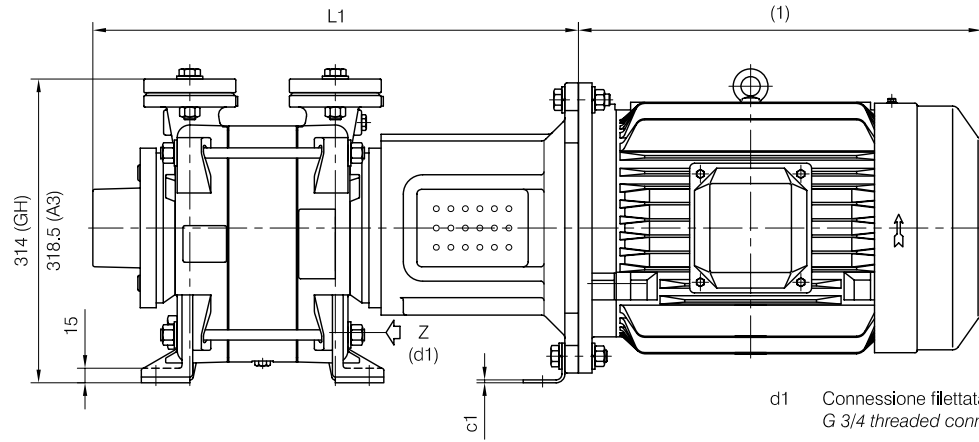
ITEM n° D00079R



TRAVAINI
PUMPS USA
 Liquid Ring & Rotary Vane Vacuum Pumps and Systems

200 Newsome Drive
 Yorktown, VA 23693
 1-800-535-4243
 www.Travaini.com

CLOSE-COUPLED construction



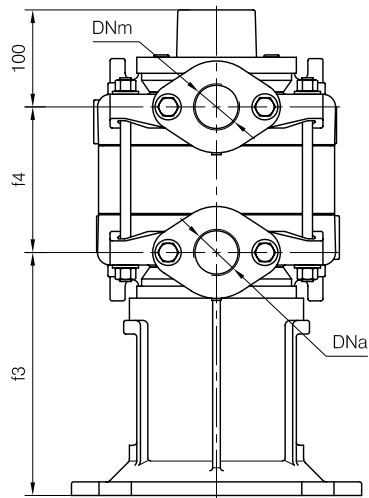
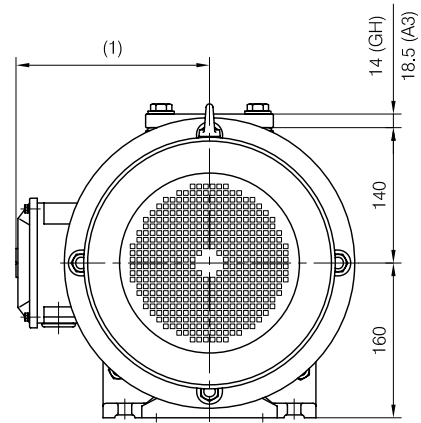
d1 Connessione filettata G 3/4 - per ingresso alimentazione
 G 3/4 threaded connection - for liquid supply inlet

MOTORI ELETTRICI Electric Motors B5 - 4 poli / poles		
Grandezza Frame size IEC	Giri/min. RPM 1480 50Hz	
	kW	HP
100 L	2.2	3
100 L	3	4
112 M	4	5.5
132 S	5.5	7.5
132 M	7.5	10

(1) Dimensioni in funzione della marca del motore installato.
 (1) Dimensions depend on installed motor manufacturer.

Dimensioni costruttive Monoblocco		Close-coupled construction dimensions						
POMPA TIPO Pump type	Motore Motor	L1	f3	G1	m3	m4	c1	Peso Weight
TRSE 40-55	100 L	441	230	154	44	163	4	50
	112 M	461	230	154	44	163	4	53
TRSE 40-100	100 L	481	230	154	44	163	4	55
	112 M	502	251	179	43	187	3	57
	132 S	511	230	154	44	163	4	60
TRSE 40-150	132 S	532	251	179	43	187	3	62
	132 M							

Versione MONOBLOCCO



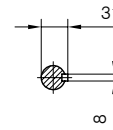
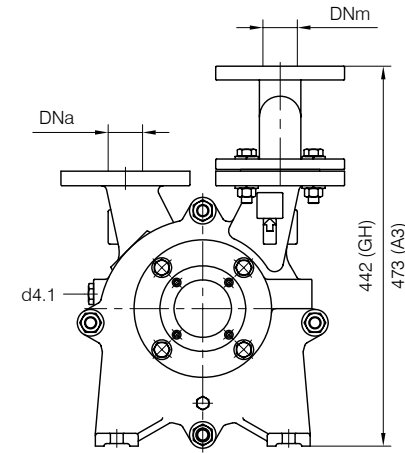
Disegno schematico. Dimensioni in mm con tolleranze secondo EN 735-1995.
 Pesì indicativi in Kg, riferiti a pompe in ghisa escluso motore, non impegnativi.
 Schematic drawing. Dimensions in mm with tolerances according to EN 735-1995 standards.
 Weights in Kgs, referred to pumps in cast iron without motor, not binding.



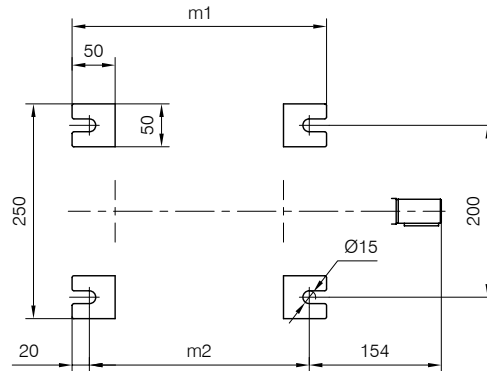
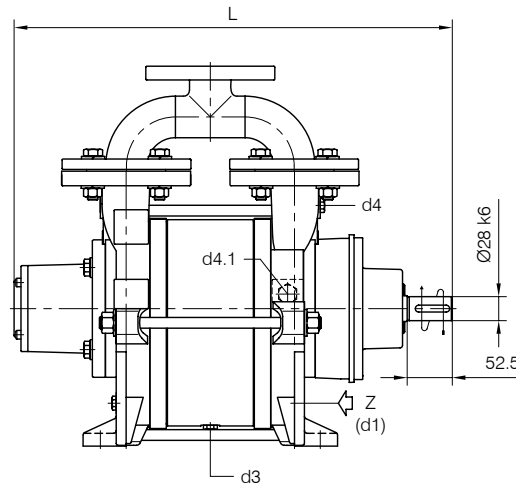
TRAVAINI
PUMPS USA
 Liquid Ring & Rotary Vane Vacuum Pumps and Systems

200 Newsome Drive
 Yorktown, VA 23693
 1-800-535-4243
 www.Travaini.com

BARESHAFT construction



Versione ad **ASSE NUDO**



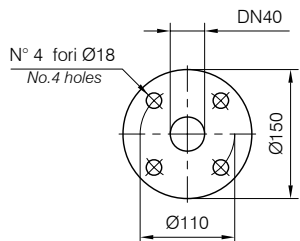
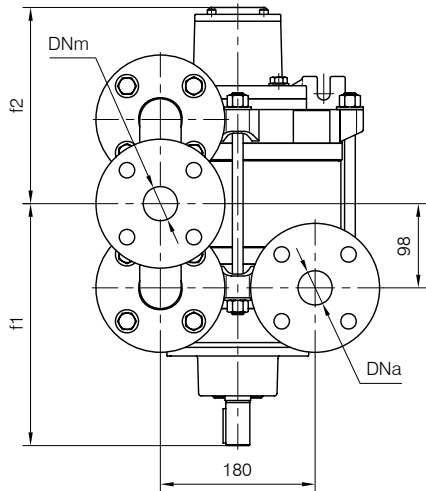
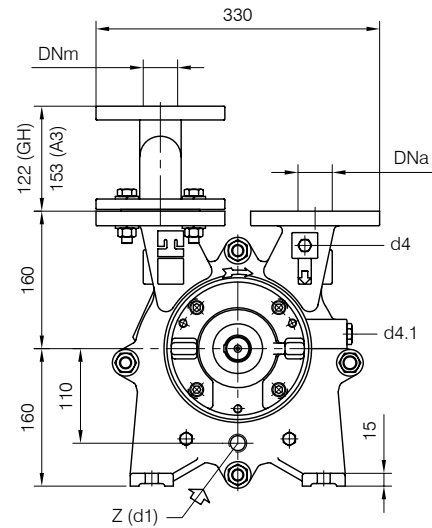
Nota / Note :

- Lt Quantità di acqua all'asse dell'albero in litri
Water quantity at shaft axis in liters
- Mi Momento di Inerzia Max all'avviamento
Max Moment of Inertia at start-up
- (GH) Pompa in ghisa e sue derivate
Cast iron pumps and derivatives
- (A3) Pompa in acciaio inox e sue derivate
Stainless steel pumps and derivatives

FLANGE: Dimensioni secondo UNI 2223 PN10
 FLANGES: Dimensions according to UNI 2223 NP10

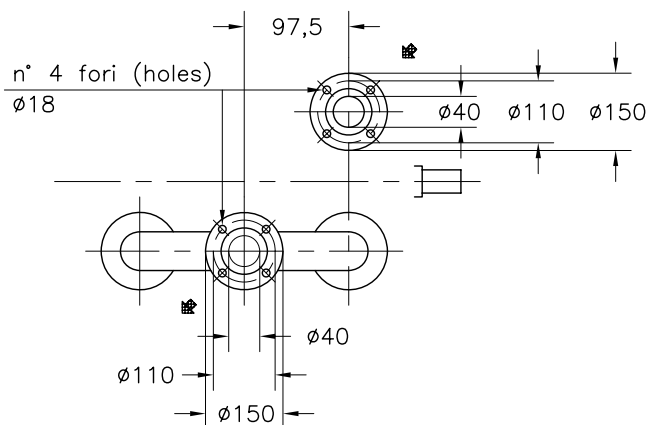
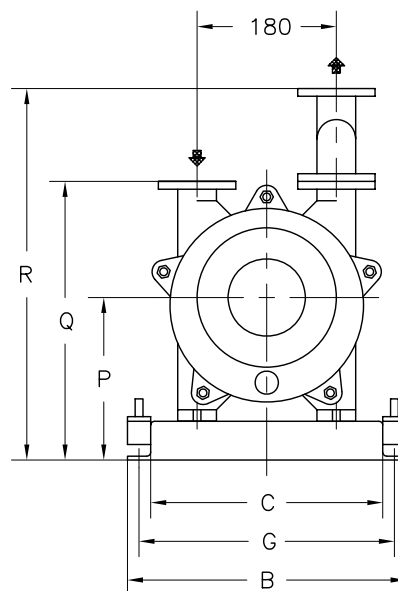
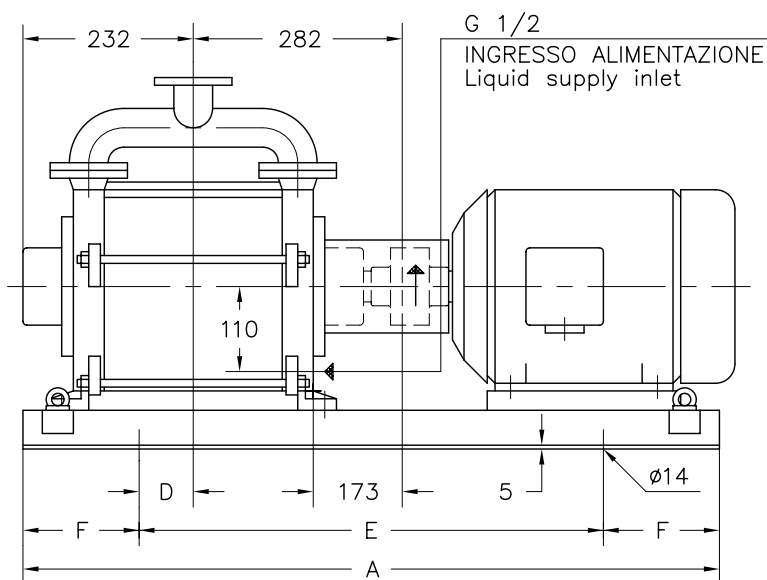
POMPA TIPO Pump type	Dimensioni costruttive		Construction dimensions							
	DNa	DNm	L	f1	f2	m1	m2	Peso Weight	Mi kgm ²	Lt
TRSC 40-150	40	40	510	282	228	296	256	71	0.05	4.5

Disegno schematico. Dimensioni in mm con tolleranze secondo EN 735-1995.
 Pesì indicativi in Kg, riferiti a pompe in ghisa escluso motore, non impegnativi.
 Schematic drawing. Dimensions in mm with tolerances according to EN 735-1995 standards.
 Weights in Kgs, referred to pumps in cast iron without motor, not binding.





Versione **ACCOPIATA (BASE-GIUNTO)**
COUPLED construction (BASEPLATE-COUPLING)



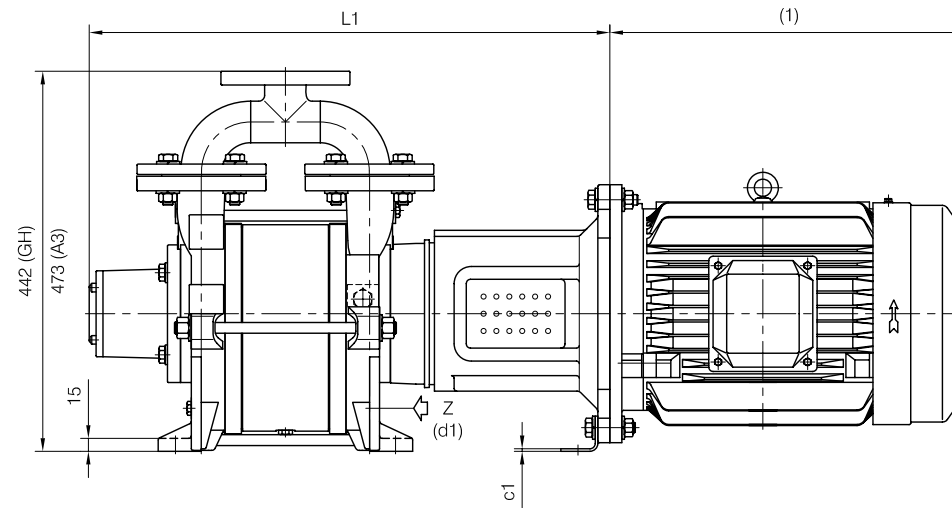
FLANGE SECONDO UNI 2223 PN 10
 Flanges according to UNI 2223 NP 10

MOTORE A 4 POLI 4 Poles Motor UNEL-MEC-B3		BASE Base-plate N°	POMPA Pump										PESO Weight ①
TIPO/Type	KW		A	B	C	D	E	F	G	P	Q	R	
112 M	4	901	770	350	290	0	420	175	320	220	380	500	96
132 SA	5,5	900	960	370	310		600	180	340	225	385	505	109
132 MA	7,5												

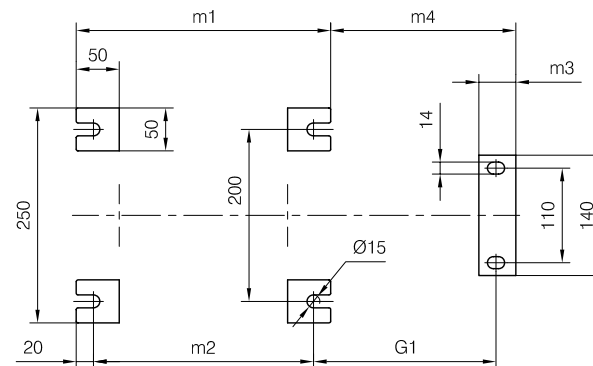
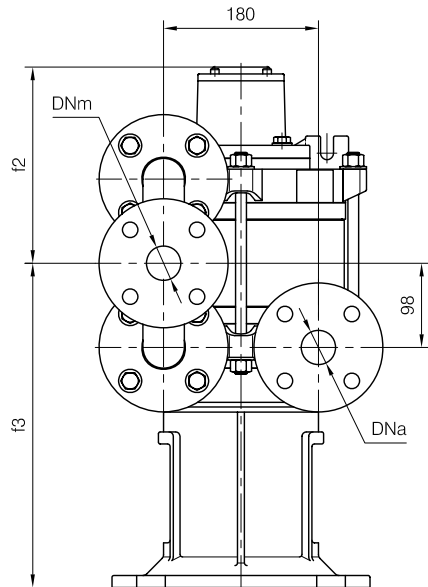
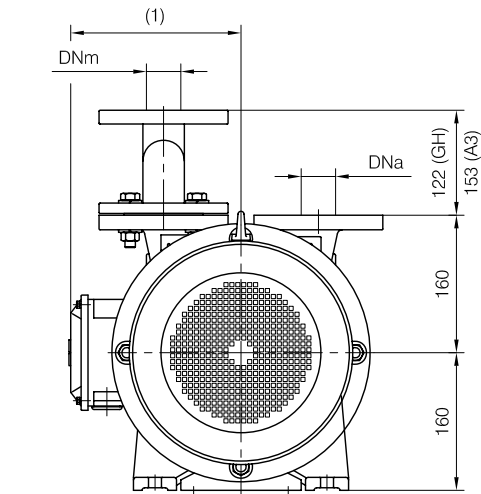
① PESO ESCLUSO MOTORE
 Weight without motor

DISEGNO SCHEMATICO – DIMENSIONI IN MM. CON TOLLERANZE SECONDO EN 735-1995 E PESI IN KG. NON IMPEGNATIVI
 Schematic drawing – Dimensions in mm. with tolerances according to EN 735-1995 and weights in kgs. not binding

CLOSE-COUPLED construction



Versione **MONOBLOCCO**



d1 Connessione filettata G 1/2 - per ingresso alimentazione
 G 1/2 threaded connection - for liquid supply inlet

MOTORI ELETTRICI Electric Motors B5 - 4 poli / poles		
Grandezza Frame size IEC	Giri/min. RPM 1480 50Hz	
	kW	HP
112 M	4	5.5
132 S	5.5	7.5

(1) Dimensioni in funzione della marca del motore installato.
 (1) Dimensions depend on installed motor manufacturer.

POMPA TIPO Pump type	Motore Motor	Dimensioni costruttive Monoblocco / Close-coupled construction dimensions						Peso Weight
		L1	f3	G1	m3	m4	c1	
TRSC 40-150	112 M	584	356	187	44	191	4	86
	132 S	605	377	212	43	215	3	89

Disegno schematico. Dimensioni in mm con tolleranze secondo EN 735-1995.
 Pesì indicativi in Kg, riferiti a pompe in ghisa escluso motore, non impegnativi.
 Schematic drawing. Dimensions in mm with tolerances according to EN 735-1995 standards.
 Weights in Kgs, referred to pumps in cast iron without motor, not binding.