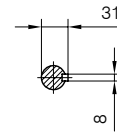
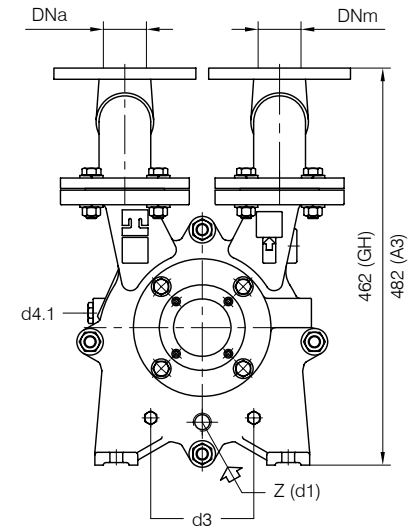
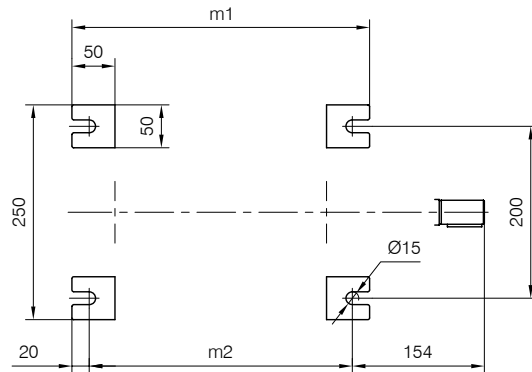
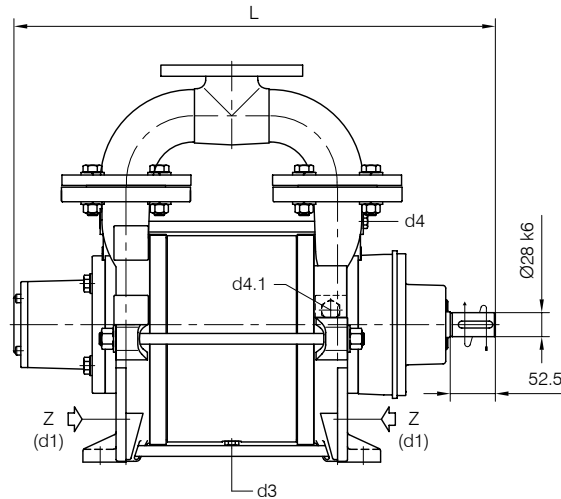


**BARESHAFT construction**



**Versione ad ASSE NUDO**



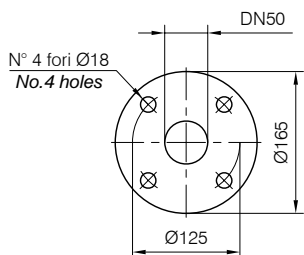
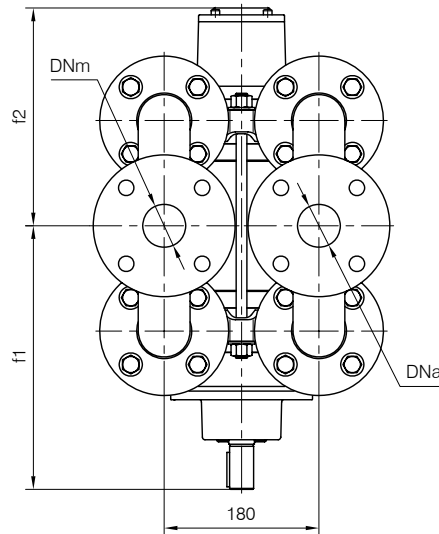
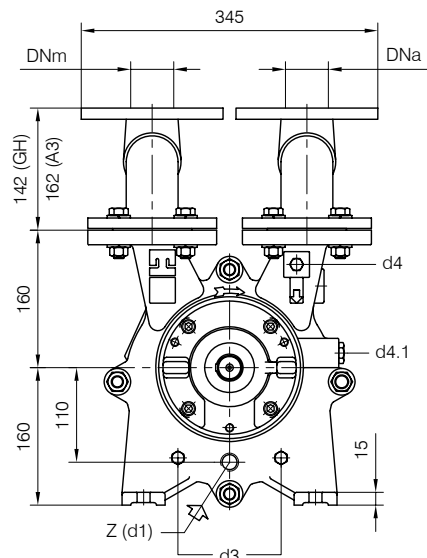
- d1 Connessione filettata G 1/2 - per ingresso alimentazione  
*G 1/2 threaded connection - for liquid supply inlet*
- d3 Attacco tappato G 1/4 - per scarico corpo pompa  
*G 1/4 plugged connection - for pump casing drain*
- d4 Attacco tappato G 1/4 - per manovuotometro  
*G 1/4 plugged connection - for manovacuum gauge*
- d4.1 Attacco tappato G 1/2 - connessione ausiliaria per valvola automatica di drenaggio  
*G 1/2 plugged connection - auxiliary connection for automatic draining valve*

Nota / Note :

- Lt Quantità di acqua all'asse dell'albero in litri  
*Water quantity at shaft axis in liters*
- Mi Momento di Inerzia Max all'avviamento  
*Max Moment of Inertia at start-up*
- (GH) Pompa in ghisa e sue derivate  
*Cast iron pumps and derivatives*
- (A3) Pompa in acciaio inox e sue derivate  
*Stainless steel pumps and derivatives*

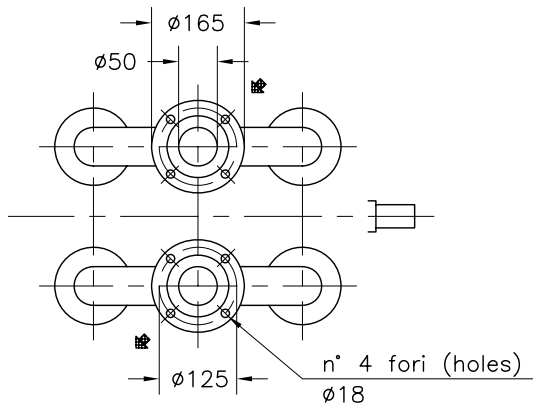
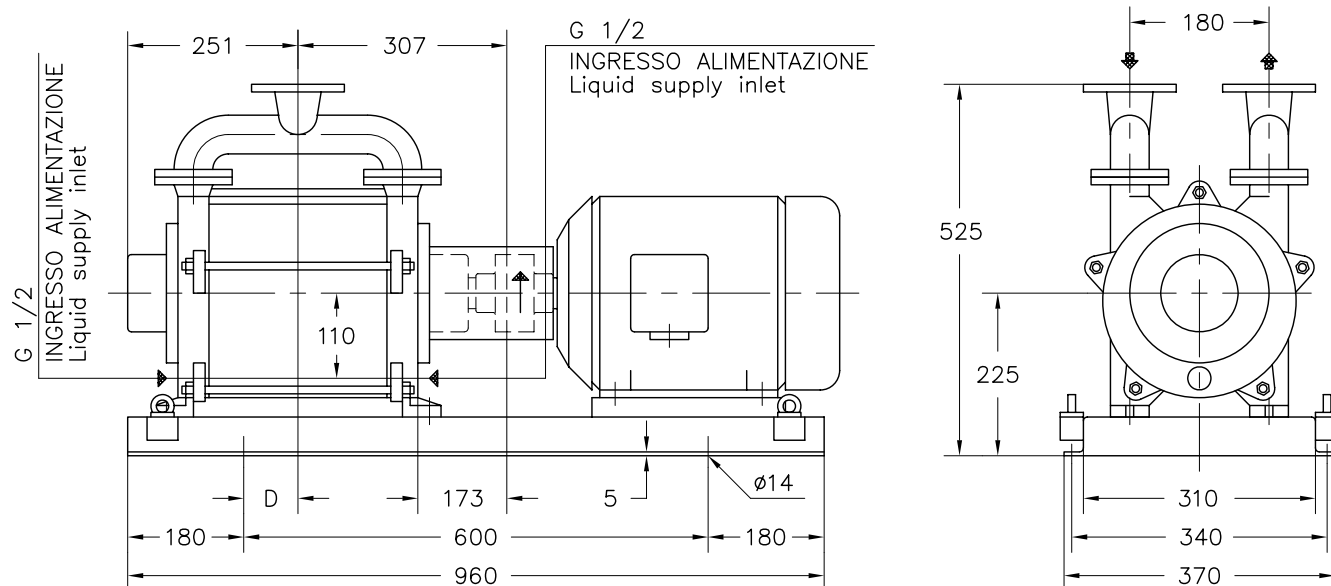
POMPA TIPO <i>Pump type</i>	Dimensioni costruttive		Construction dimensions							
	DNa	DNm	L	f1	f2	m1	m2	Peso <i>Weight</i>	Mi <i>kgm<sup>2</sup></i>	Lt
TRSC 50-220	50	50	560	307	253	346	306	87	0.065	5.3

Disegno schematico. Dimensioni in mm con tolleranze secondo EN 735-1995.  
 Pesì indicativi in Kg, riferiti a pompe in ghisa escluso motore, non impegnativi.  
*Schematic drawing. Dimensions in mm with tolerances according to EN 735-1995 standards.  
 Weights in Kgs, referred to pumps in cast iron without motor, not binding.*



FLANGE: Dimensioni secondo UNI 2223 PN10  
 FLANGES: Dimensions according to UNI 2223 NP10

Versione **ACCOPIATA (BASE-GIUNTO)**  
**COUPLED construction (BASEPLATE-COUPLING)**



FLANGE SECONDO UNI 2223 PN 10  
 Flanges according to UNI 2223 NP 10

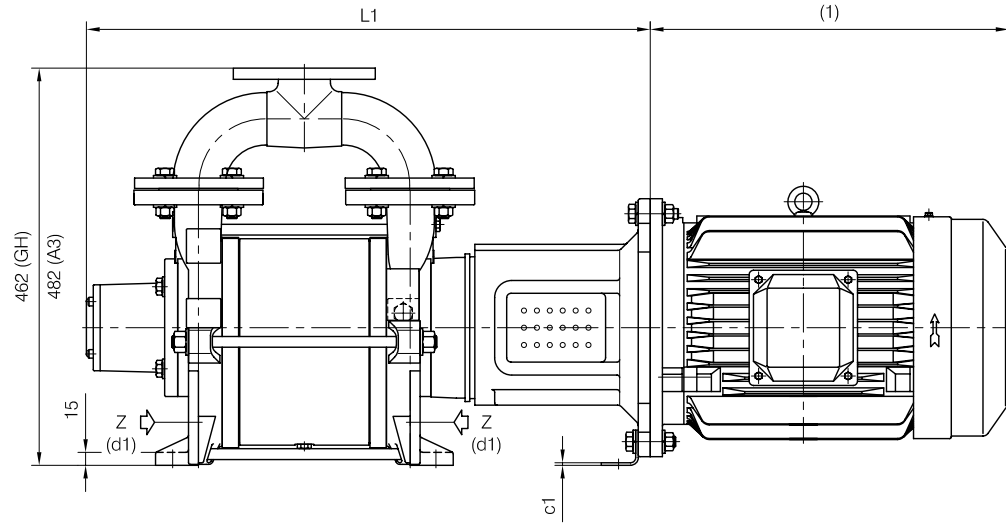
MOTORE A 4 POLI 4 Poles Motor UNEL-MEC-B3		BASE Base-plate N°	POMPA Pump	PESO Weight
TIPO/Type	KW		D	①
112 M	4	900	90	112
132 SA	5,5		50	122
132 MA	7,5			123
132 MB	9			

① PESO ESCLUSO MOTORE  
 Weight without motor

DISEGNO SCHEMATICO – DIMENSIONI IN MM. CON TOLLERANZE SECONDO EN 735-1995 E PESI IN KG. NON IMPEGNATIVI  
 Schematic drawing – Dimensions in mm. with tolerances according to EN 735-1995 and weights in kgs. not binding

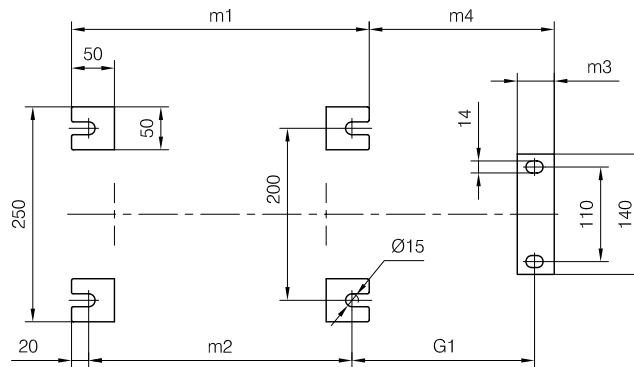
**CLOSE-COUPLED construction**

**Versione MONOBLOCCO**



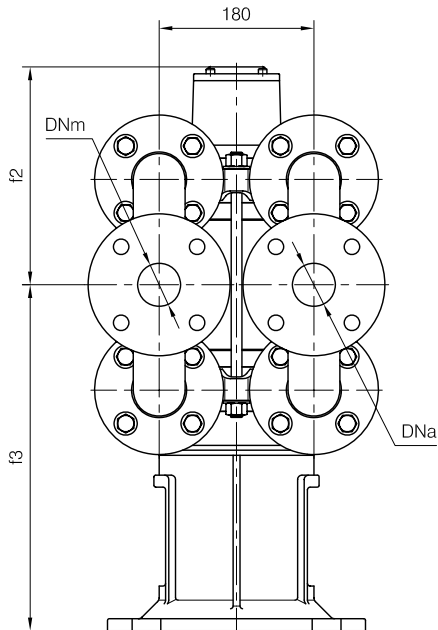
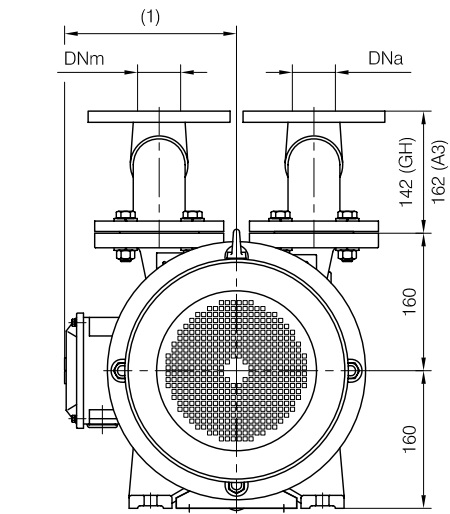
d1 Connessione filettata G 1/2 - per ingresso alimentazione  
 G 1/2 threaded connection - for liquid supply inlet

MOTORI ELETTRICI Electric Motors B5 - 4 poli / poles		
Grandezza Frame size IEC	Giri/min. RPM 1480 50Hz	
	KW	HP
112 M	4	5.5
132 S	5.5	7.5
132 M	7.5	10



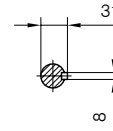
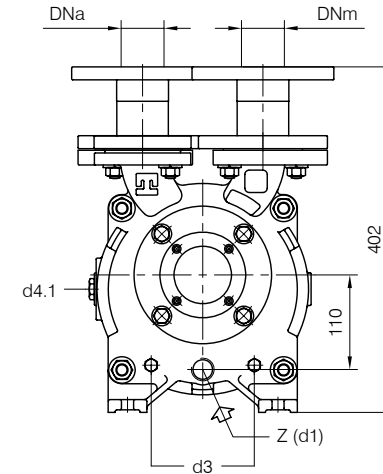
(1) Dimensioni in funzione della marca del motore installato.  
 (1) Dimensions depend on installed motor manufacturer.

POMPA TIPO Pump type	Motore Motor	Dimensioni costruttive Monoblocco / Close-coupled construction dimensions						Peso Weight
		L1	f3	G1	m3	m4	c1	
TRSC 50-220	112 M	634	381	187	44	191	4	102
	132 S	655	402	212	43	215	3	105
	132 M							

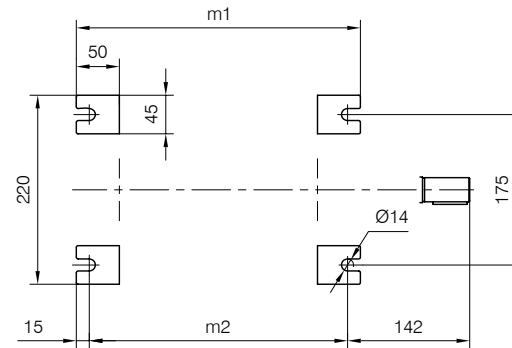
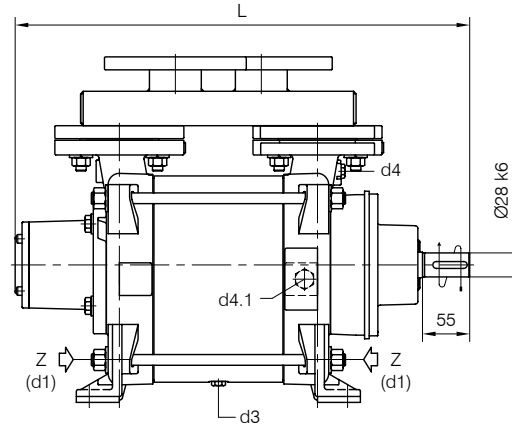


Disegno schematico. Dimensioni in mm con tolleranze secondo EN 735-1995.  
 Pesì indicativi in Kg, riferiti a pompe in ghisa escluso motore, non impegnativi.  
 Schematic drawing. Dimensions in mm with tolerances according to EN 735-1995 standards.  
 Weights in Kgs, referred to pumps in cast iron without motor, not binding.

**BARESHAFT construction**



**Versione ad ASSE NUDO**

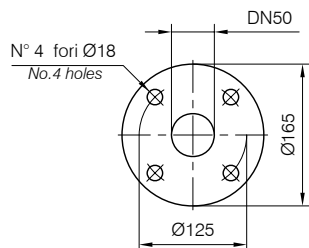
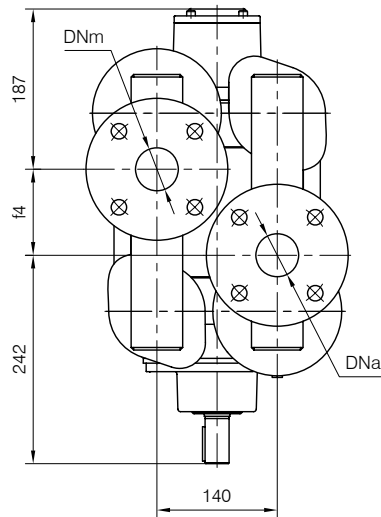
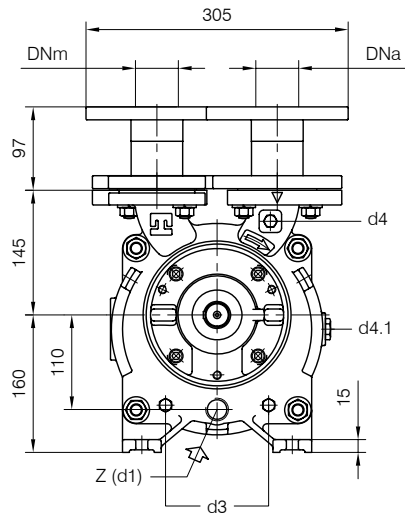


Nota / Note :

- Lt Quantità di acqua all'asse dell'albero in litri  
Water quantity at shaft axis in liters
- Mi Momento di Inerzia Max all'avviamento  
Max Moment of Inertia at start-up

POMPA TIPO Pump type	Dimensioni costruttive Construction dimensions						Peso Weight	Mi kgm <sup>2</sup>	Lt
	DNa	DNm	L	f4	m1	m2			
TRSE 50-220	50	50	529	100	330	300	74	0.06	5

Disegno schematico. Dimensioni in mm con tolleranze secondo EN 735-1995.  
 Pesì indicativi in Kg, riferiti a pompe in ghisa escluso motore, non impegnativi.  
 Schematic drawing. Dimensions in mm with tolerances according to EN 735-1995 standards.  
 Weights in Kgs, referred to pumps in cast iron without motor, not binding.



FLANGE: Dimensioni secondo UNI 2223 PN10  
 FLANGES: Dimensions according to UNI 2223 NP10

DIMENSIONE D'INGOMBRO / Overall dimensions  
 POMPE PER VUOTO AD ANELLO DI LIQUIDO

Liquid ring vacuum pumps

SERIE / Series

TRSE 50-220/C



**TRAVAINI**  
**PUMPS USA**

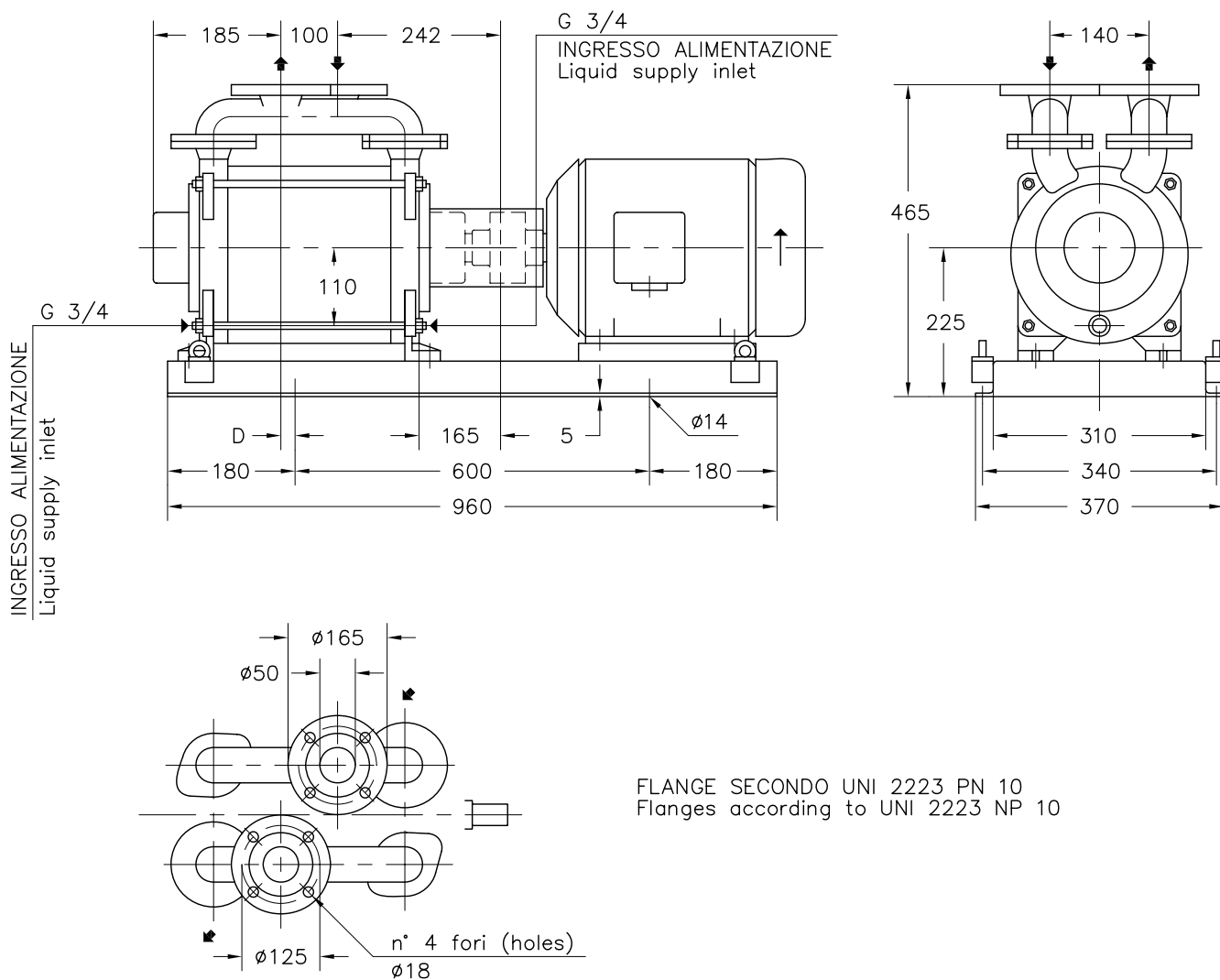
Liquid Ring & Rotary Vane Vacuum Pumps and Systems

200 Newsome Drive  
 Yorktown, VA 23693

1-800-535-4243

www.Travaini.com

Versione **ACCOPIATA (BASE-GIUNTO)**  
**COUPLED construction (BASEPLATE-COUPLING)**



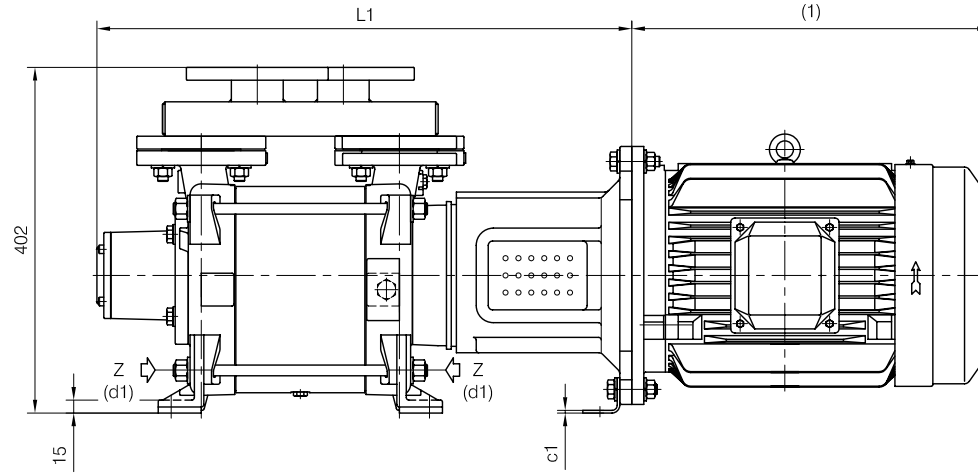
FLANGE SECONDO UNI 2223 PN 10  
 Flanges according to UNI 2223 NP 10

MOTORE A 4 POLI 4 Poles Motor UNEL-MEC-B3		BASE Base-plate N°	POMPA Pump	PESO Weight
TIPO/Type	KW		D	①
112 M	4	900	0	99
132 SA	5,5		20	109
132 MA	7,5			110
132 MB	9			

① PESO ESCLUSO MOTORE  
 Weight without motor

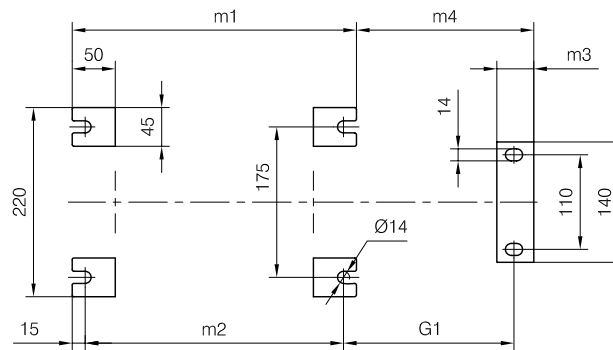
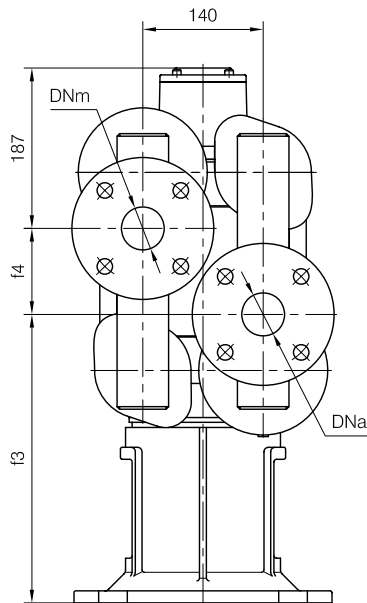
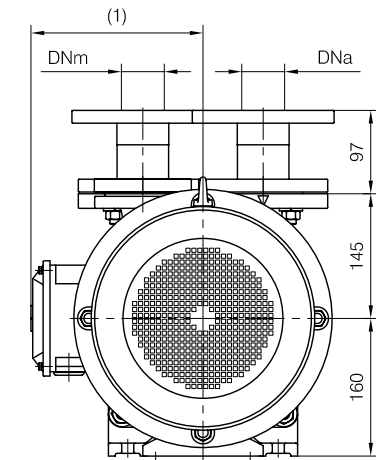
DISEGNO SCHEMATICO - DIMENSIONI IN MM. CON TOLLERANZE SECONDO EN 735-1995 E PESI IN KG. NON IMPEGNATIVI  
 Schematic drawing - Dimensions in mm. with tolerances according to EN 735-1995 and weights in kgs. not binding

**CLOSE-COUPLED construction**



d1 Connessione filettata G 3/4 - per ingresso alimentazione  
 G 3/4 threaded connection - for liquid supply inlet

Versione **MONOBLOCCO**



(1) Dimensioni in funzione della marca del motore installato.  
 (1) Dimensions depend on installed motor manufacturer.

MOTORI ELETTRICI Electric Motors B5 - 4 poli / poles		
Grandezza Frame size IEC	Giri/min. RPM	
	1480	50Hz
132 S	5.5	7.5
132 M	7.5	10
132 M	9	12.5

POMPA TIPO Pump type	Motore Motor	Dimensioni costruttive Monoblocco Close-coupled construction dimensions						Peso Weight
		L1	f3	G1	m3	m4	c1	
TRSE 50-220	132 S	622	335	198	43	206	3	92
	132 M							
	132 M							

Disegno schematico. Dimensioni in mm con tolleranze secondo EN 735-1995.  
 Pesì indicativi in Kg, riferiti a pompe in ghisa escluso motore, non impegnativi.  
 Schematic drawing. Dimensions in mm with tolerances according to EN 735-1995 standards.  
 Weights in Kgs, referred to pumps in cast iron without motor, not binding.