

DIMENSIONE DI INGOMBRO / Overall dimensions
 POMPE PER VUOTO AD ANELLO DI LIQUIDO
 Liquid ring vacuum pumps

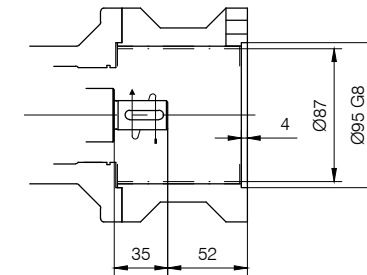
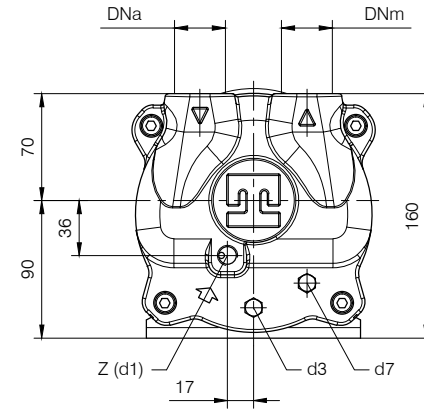
TRVX 257/1-C/M (mot. IEC - pag. 1/2)
 SERIE / Series



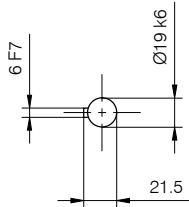
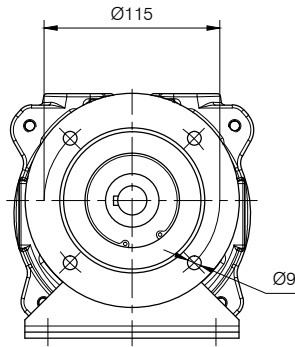
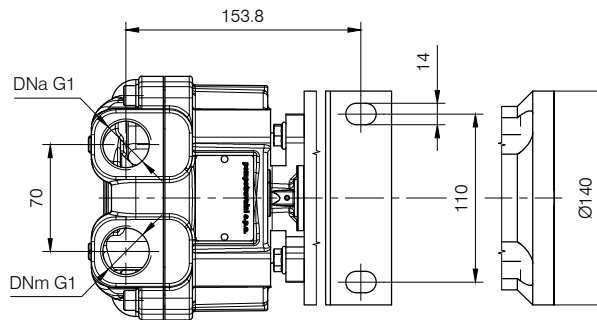
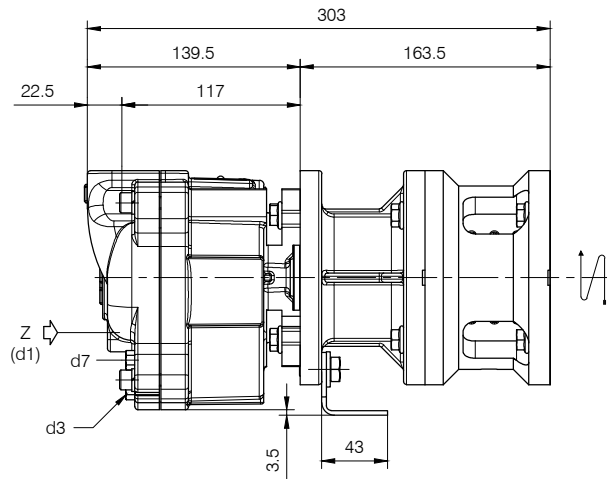
pompetravaini S.p.A.
 CASTANO PRIMO (MILANO)

BARESHAFT construction

Versione ad **ASSE NUDO**



Particolare Accoppiamento con Motore
 Motor Coupled detail



- d1 Connessione filettata G 1/4 - per ingresso alimentazione
 G 1/4 threaded connection - for liquid supply inlet
- d3 Attacco tappato G 1/8 - per scarico corpo pompa
 G 1/8 plugged connection - for pump casing drain
- d7 Attacco tappato G 1/8 - per valvola anticavitazione
 G 1/8 plugged connection - for anticavitation valve

POMPA TIPO Pump type	Peso Weight	Mi kgm ²	Lt
TRVX 257	18	0.006	0.4

Nota / Note :

- Lt Quantità di acqua all'asse dell'albero in litri
 Water quantity at shaft axis in liters
- Mi Momento di Inerzia Max all'avviamento
 Max Moment of Inertia at start-up

Disegno schematico. Dimensioni in mm con tolleranze secondo EN 735-1995.
 Pesì indicativi in Kg, riferiti a pompe in ghisa senza motore, non impegnativi.
 Schematic drawing. Dimensions in mm with tolerances according to EN 735-1995 standards.
 Weights in Kgs, referred to pumps in cast iron without motor, not binding.

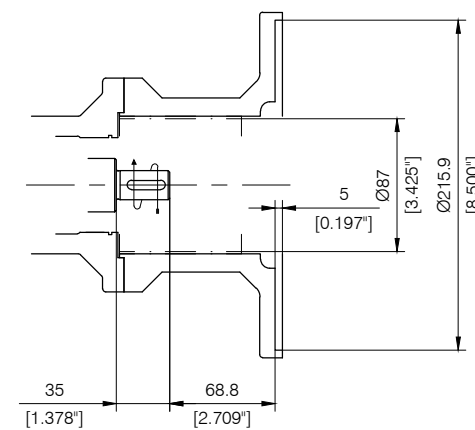
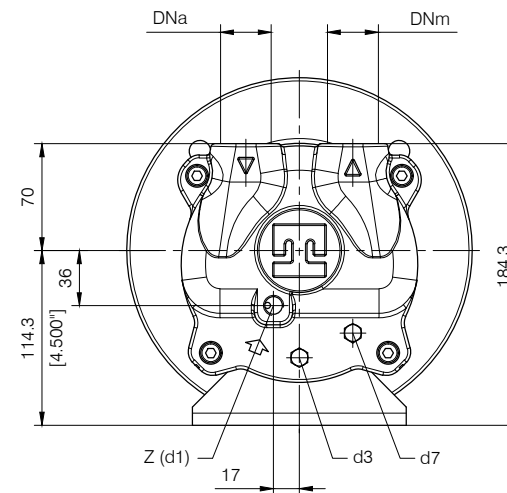
DIMENSIONE DI INGOMBRO / Overall dimensions
 POMPE PER VUOTO AD ANELLO DI LIQUIDO
 Liquid ring vacuum pumps

TRVX 257/1-C/N (mot. NEMA - pag. 1/2)
 SERIE / Series



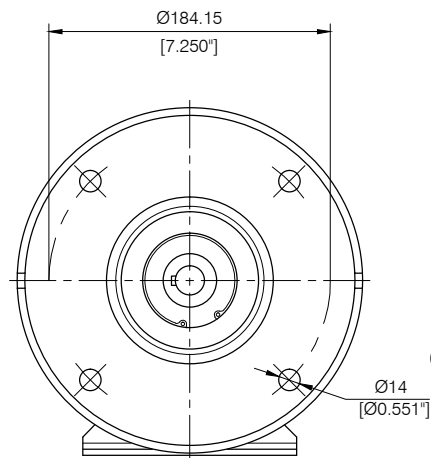
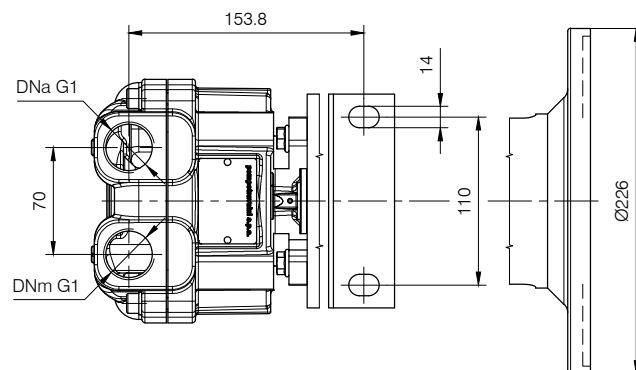
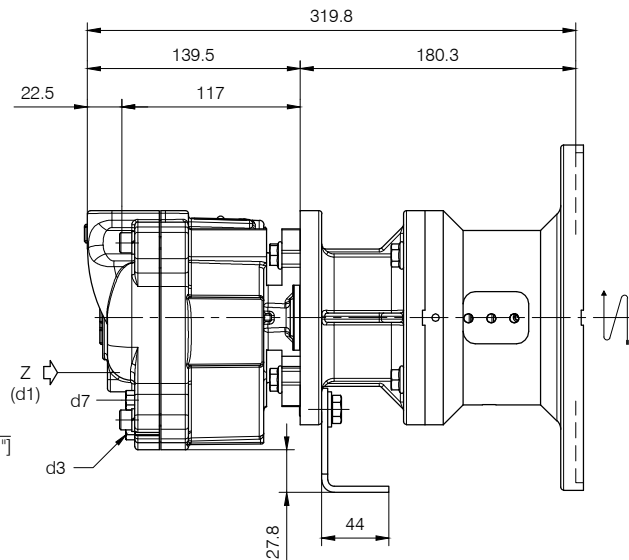
pompetravaini S.p.A.
 CASTANO PRIMO (MILANO)

BARESHAFT construction



Particolare Accoppiamento con Motore
 Motor Coupled detail

Versione ad **ASSE NUDO**



- d1 Connessione filettata G 1/4 - per ingresso alimentazione
 G 1/4 threaded connection - for liquid supply inlet
- d3 Attacco tappato G 1/8 - per scarico corpo pompa
 G 1/8 plugged connection - for pump casing drain
- d7 Attacco tappato G 1/8 - per valvola anticavitazione
 G 1/8 plugged connection - for anticavitation valve

POMPA TIPO Pump type	Peso Weight	Mi kgm ²	Lt
TRVX 257	20	0.006	0.4

Nota / Note :

- Lt Quantità di acqua all'asse dell'albero in litri
 Water quantity at shaft axis in liters
- Mi Momento di Inerzia Max all'avviamento
 Max Moment of Inertia at start-up

Disegno schematico. Dimensioni in mm con tolleranze secondo EN 735-1995.
 Pesì indicativi in Kg, riferiti a pompe in ghisa senza motore, non impegnativi.
 Schematic drawing. Dimensions in mm with tolerances according to EN 735-1995 standards.
 Weights in Kgs, referred to pumps in cast iron without motor, not binding.

RIF. - Ref.: AP / C.T.
 DATA - Date: 03-2011

DOCUMENTO N. - Document no.: 7207.112.2M03.01.04
 SOSTITUISCE DOC. - Replaces Doc. (ITEM): -

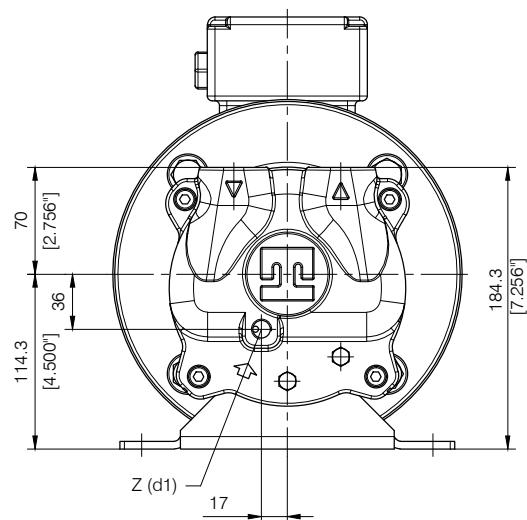
ITEM n° D00139R

DIMENSIONE DI INGOMBRO / Overall dimensions
 POMPE PER VUOTO AD ANELLO DI LIQUIDO
 Liquid ring vacuum pumps
 SERIE / Series
TRVX 257/1-C/N (mot. NEMA - pag.2/2)



pompetravaini s.p.a.
 CASTANO PRIMO (MILANO)

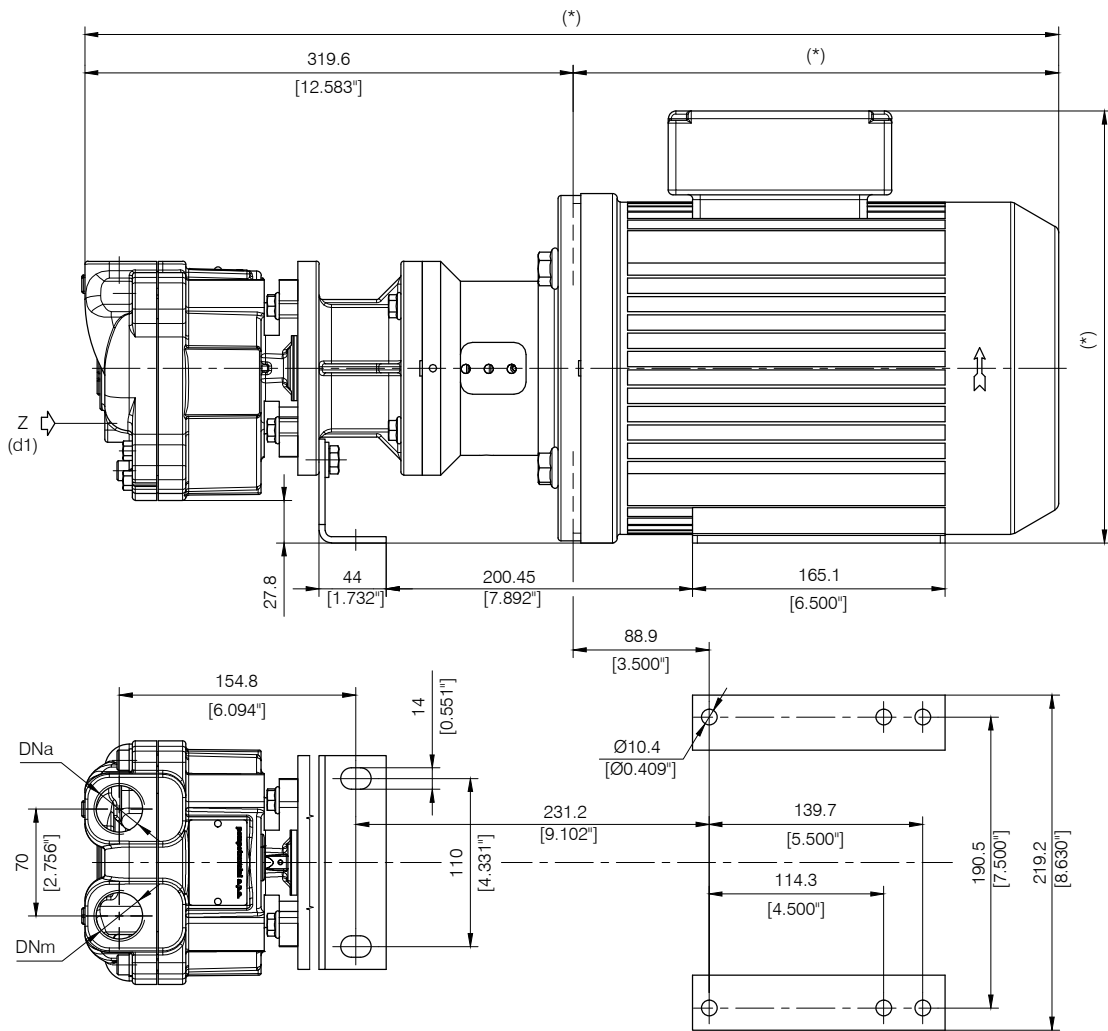
COUPLED construction



d1 Connessione filettata G 1/4 - per ingresso alimentazione
 G 1/4 threaded connection - for liquid supply inlet

Motore elettrico a 2 poli / 2 Poles Electric Motor Costruzione / Construction C Face				
Grandezza Frame size NEMA	Giri/min. RPM 3500			Peso Weight
	kW	HP	Hz	Kg
182 TC	2.2	3	60	45 (*)

Versione **ACCOPPIATA**



POMPA TIPO Pump type	Peso Weight
TRVX 257	20

Nota / Note :

(*) Dimensioni e peso in funzione della marca del motore installato.
 Dimensions and weights depend on installed motor manufacturer.

Disegno schematico. Dimensioni in mm con tolleranze secondo EN 735-1995.
 Pesi indicativi in Kg, riferiti a pompe in ghisa senza motore, non impegnativi.
 Schematic drawing. Dimensions in mm with tolerances according to EN 735-1995 standards.
 Weights in Kgs, referred to pumps in cast iron without motor, not binding.

RIF. - Ref.: AP / C.T.
 DATA - Date: 03-2011

DOCUMENTO N. - Document no.: 7207.1L7.2M03.01.03
 SOSTITUISCE DOC. - Replaces Doc. (ITEM): -

ITEM n° D00140R