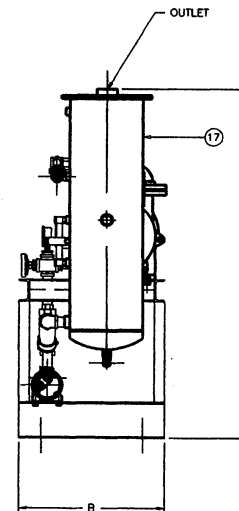
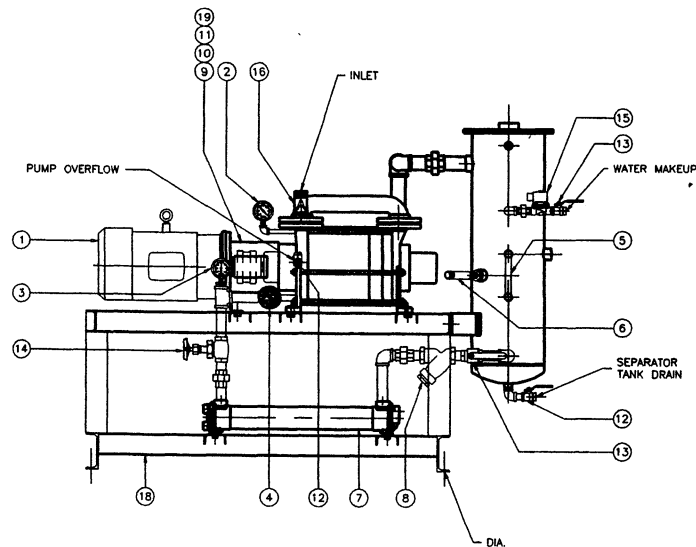
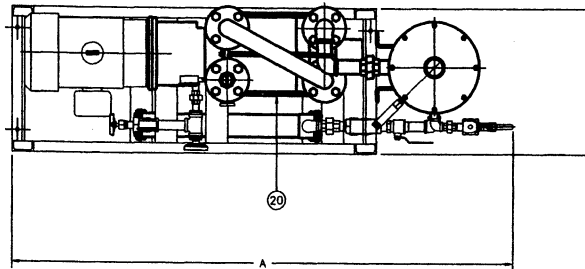


MODEL	DIM. A	DIM. B	DIM. C	DIM. D	INLET	OUTLET	DIA.
TRW130H-1FR	68-7/8"	20"	56-1/8"	22"	2-1/2"	2-1/2"	1/2"

## WATERSEALED 10 HP VACUUM SYSTEM

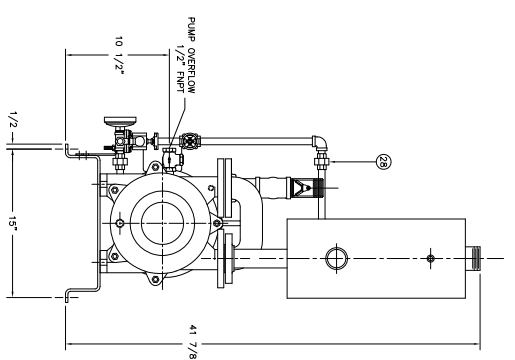
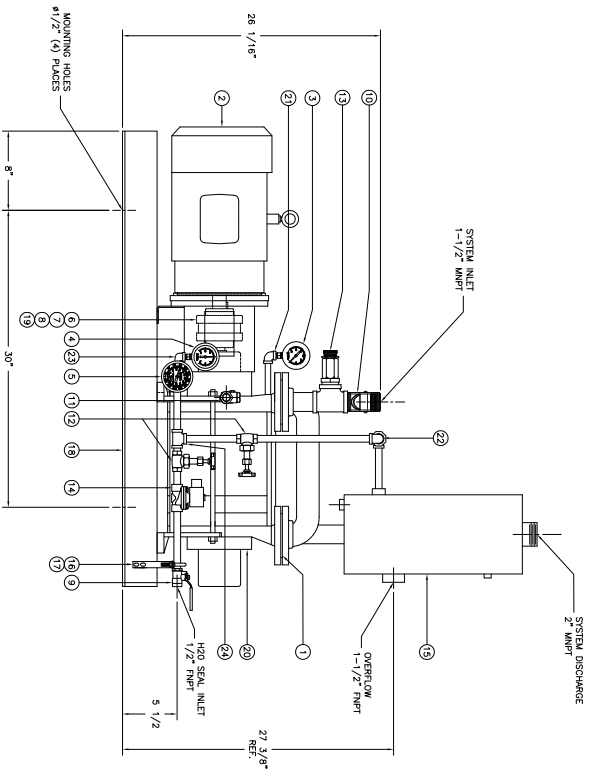
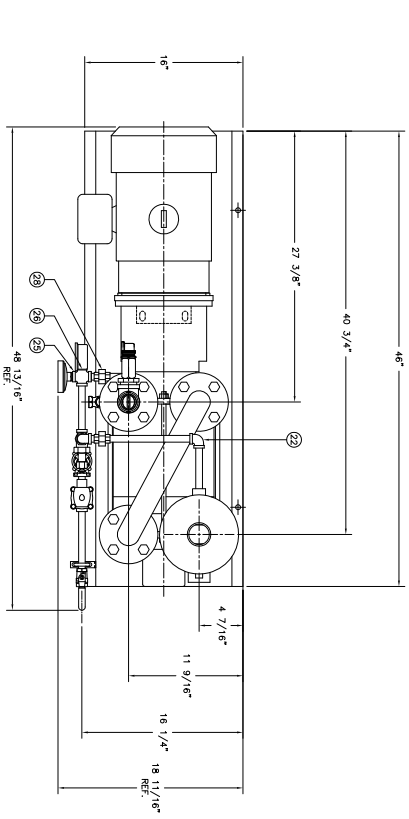
BILL OF MATERIALS		
ITEM	QTY	DESCRIPTION
1	1	MOTOR
2	1	VACUUM GAUGE
3	1	COMPOUND GAUGE
4	1	TEMPERATURE GAUGE
5	1	LEVEL GAUGE
6	1	LEVEL SWITCH
7	1	HEAT EXCHANGER
8	1	Y-STRAINER
9	1	DRIVE COUPLING
10	1	DRIVE COUPLING
11	1	COUPLING ELEMENT
12	2	DRAIN VALVE
13	2	BALL VALVE
14	1	GLOBE VALVE
15	1	SOLENOID VALVE
16	1	INLET CHECK VALVE
17	1	SEPARATOR
18	1	BASEPLATE
19	1	MONO BLOCK ASSEMBLY
20	1	VACUUM PUMP



THIS PRINT IS PROPERTY OF TRAVNI PUMPS USA, INC. AND MAY NOT BE GIVEN TO ANY OTHER CONCERN WITHOUT THE CONSENT OF TRAVNI PUMPS USA, INC.

DESCRIPTION FOR GENERAL ARRANGEMENT ONLY

PAGE NO.: 1      DATE: 6/18/04      SCALE: NONE



NOTES  
 1.) LOCATE AND SECURE SYSTEM ON A FLAT AND LEVEL SURFACE.  
 2.) PLUG ALL OPEN PORTS WITH SQUARE HEAD NPT PIPE PLUGS.

BILL OF MATERIALS		
ITEM	QTY	PART NUMBER
1	2	GASKET FLAT 3.5"OD X 1.63"ID X .80"THK CARBON
2	1	MOTOR 10 HP 4P 215TC FLS 230/480V
3	1	GAUGE VACUUM 0-30"HgV 316 SST 2.5" DIA
4	1	GAUGE COMPOUND 30/0/15 316 SST 2.5" DIA
5	1	GAUGE TEMP 20/20/T-10/110°C 3" OAL 304 SST
6	1	COUPLING DRIVE 75 1.375" CI
7	1	COUPLING DRIVE 75 28 MM CI
8	1	COUPLING ELEMENT SIZE 7-JE
9	1	VALVE BALL .50" NPT SP SST/SST/PTFE
10	1	VALVE CHECK RING 1.50" NPT SS/BN/A
11	1	VALVE CHECK SWING .50" NPT SST/TFE
12	2	VALVE GLOBE .50" NPT SST/TFE
13	1	VALVE VAC. RELIEF .75 SST ADL
14	1	VALVE SOLENOID .50" NPT W/ NC SST/MOTN
15	1	SEPARATOR M/M/POR 8" X 18" SST
16	1	BRACKET U BOLT FOR .50" NPT PIPE
17	1	BRACKET PIPE 7.25" X 2.5" X .625" CS
18	1	BASEPLATE 4.62" X 1.62" X .33" FORMED CS
19	1	M-BLOCK ASST TRS/H40 215T
20	1	TRHC40-190/A3
21	1	ELBOW, 90° 1/4" THREAD 316 SST
22	2	ELBOW, 90° 1/2" THREAD SST (1 NOT SHOWN)
23	1	ELBOW, 90° STREET 1/2" THREAD 316 SST
24	1	TEE, STRAIGHT 1/2" THREAD 316 SST
25	1	CROSS, 1/2" THREAD 316 SST
26	1	BUSHING, REDUCER 1/2" - 1/4" 316 SST
27	1	BUSHING, REDUCER 3/4" - 1/2" (NOT SHOWN)
28	2	UNION, 1/2" THREAD SST

# GENERAL ARRANGEMENT DRAWING ONLY

THIS PRINT IS PROPERTY OF TRAWANI PUMPS USA, INC. AND MAY NOT BE GIVEN TO ANY OTHER CONCERN WITHOUT THE CONSENT OF TRAWANI PUMPS USA, INC.

**TOLERANCES**  
 DECIMAL ± .005  
 FRACTIONAL ± 1/32"  
 ANGLE ± 0° 30' 00"  
 UNLESS OTHERWISE SPECIFIED IN DRAWING

Part No. SBHXH1905H23XVZ  
 DIMS BR: 10M BR: 10M  
 DATE: 2/15/13  
 SCALE: 1 = 6

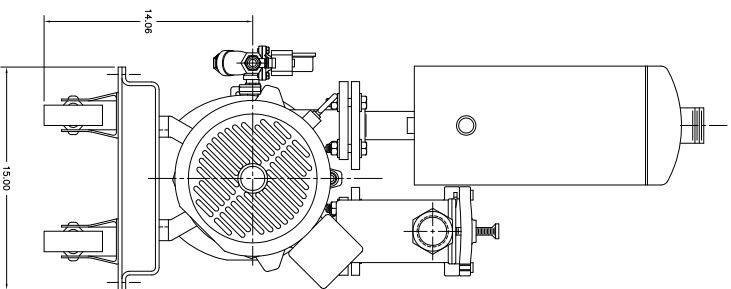
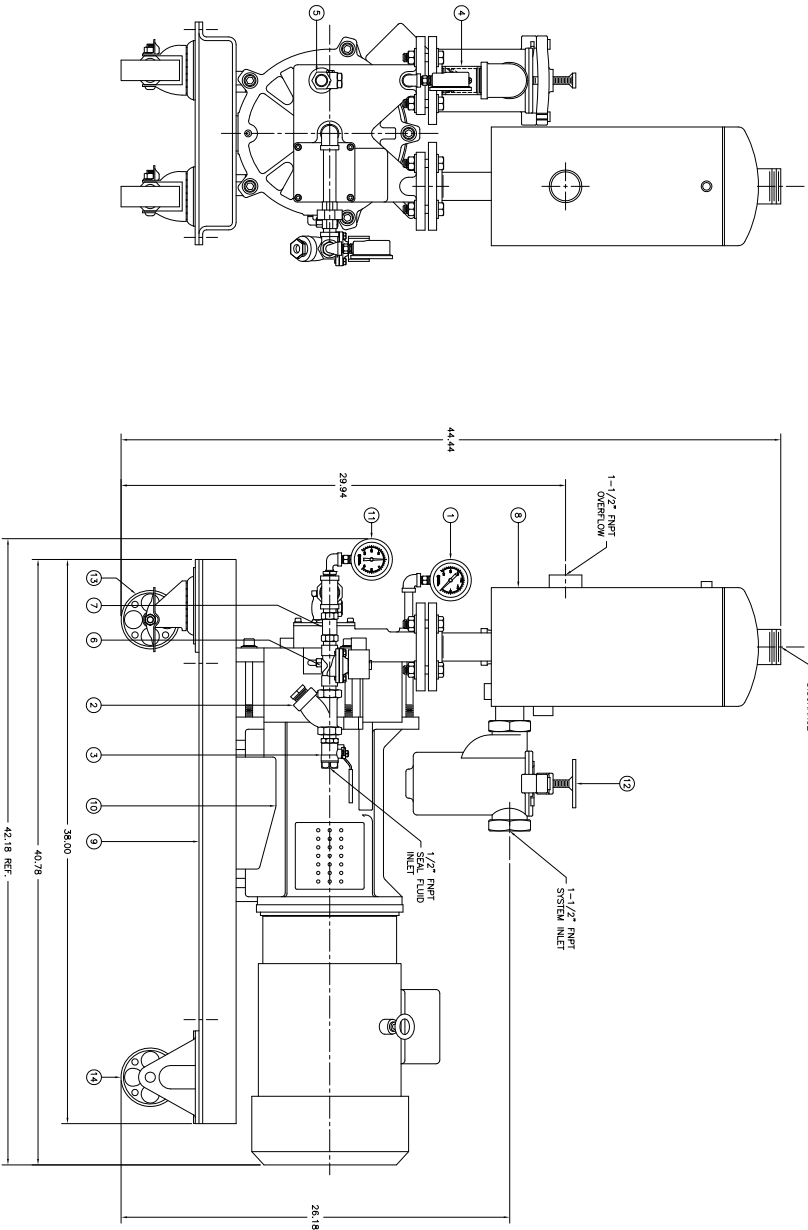
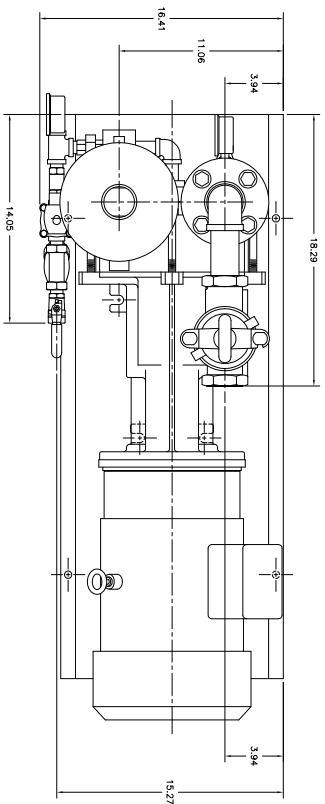
DESCRIPTION: PARTIAL RECOVERY WATERSEALED 10 HP SMP/L LIQUID RING VACUUM SYSTEM  
 MODEL NO. TRW130H-1PR-XP-SS  
 DIMS NO. 1302122-D

**TRAWANI PUMPS USA**  
 Liquid Ring & Steam Jet Vacuum Pumping and Systems

REV	DESCRIPTION	DATE	APPR
A	CHANGED TANK CONNECTION FROM THREADED TO FLANGED	4/1/13	BC

**REVISIONS**

# GENERAL ARRANGEMENT DRAWING ONLY



BILL OF MATERIALS		
ITEM	QTY	PART NUMBER
1	1	VACUUM GAUGE 0-.30"Hg/ BRS 2.5" DIAL
2	1	Y-STRAINER 0.50" NPT CI 20 MESH
3	1	BALL VALVE 0.50" NPT BRS/BRS/PTE
4	1	CHECK VALVE HINGED 1.5" NPT CS/AL/BR/VA
5	1	CHECK VALVE SWING 0.50" NPT BRS W/TEFLON SEAT
6	1	SOLENOID VALVE 0.50" NPT N4 NC BRS/BR/VA
7	1	FLOW CONTROL VALVE 0.50" NPT 4.0 GPM NICKEL/BRS/BR/VA
8	1	SEPARATOR NR/PB 8" X 18" 1.5" NPT INLET/2" NPT OUTLET
9	1	BRACKET MESH/STEEL FIBRE BRUSH-188 W/INLETS FOR CASTERS
10	1	LIQUID RING VACUUM PUMP ASSY W/MOTOR
11	1	COMPOUND GAUGE 30.0/0/15 BRS 2.5" DIAL
12	1	BAKET STRAINER 1.5" NPT CI 20 MESH
13	2	CASTER 450 LB. CAPACITY SWIVEL W/BRAKE CI
14	2	CASTER 450 LB. CAPACITY RIGID CI

SYSTEM NOTES:  
 1) LOCATE VACUUM SYSTEM ON A LEVEL SURFACE.  
 2) FLUG EMPTY PORTS WITH SQUARE HEAD NPT PIPE PLUGS.

THIS PRINT IS PROPERTY OF TRAWANI PUMPS USA, INC. AND MAY NOT BE GIVEN TO ANY OTHER CONCERN WITHOUT THE CONSENT OF TRAWANI PUMPS USA, INC.

**TOLERANCES**  
 DECIMAL ± .50"  
 FRACTIONAL ± 1/32"  
 ANGLE ± 0° 30' 00"  
 UNLESS OTHERWISE SPECIFIED IN DRAWINGS

PART NO. 3264-97  
 S/N NO. VARIOUS

DATE 11/3/97  
 Dwg. No. TRW100V-1NR

DESCRIPTION: LIQUID RING VACUUM SYSTEM  
 WATERSEALED 7.5 HP NO RECOVERY W/CASTERS

SCALE: 1 = 4

REV. DESCRIPTION DATE APPR.

TRAWANI PUMPS USA  
 Liquid Ring & Steam Jet Vacuum Pumping and Systems