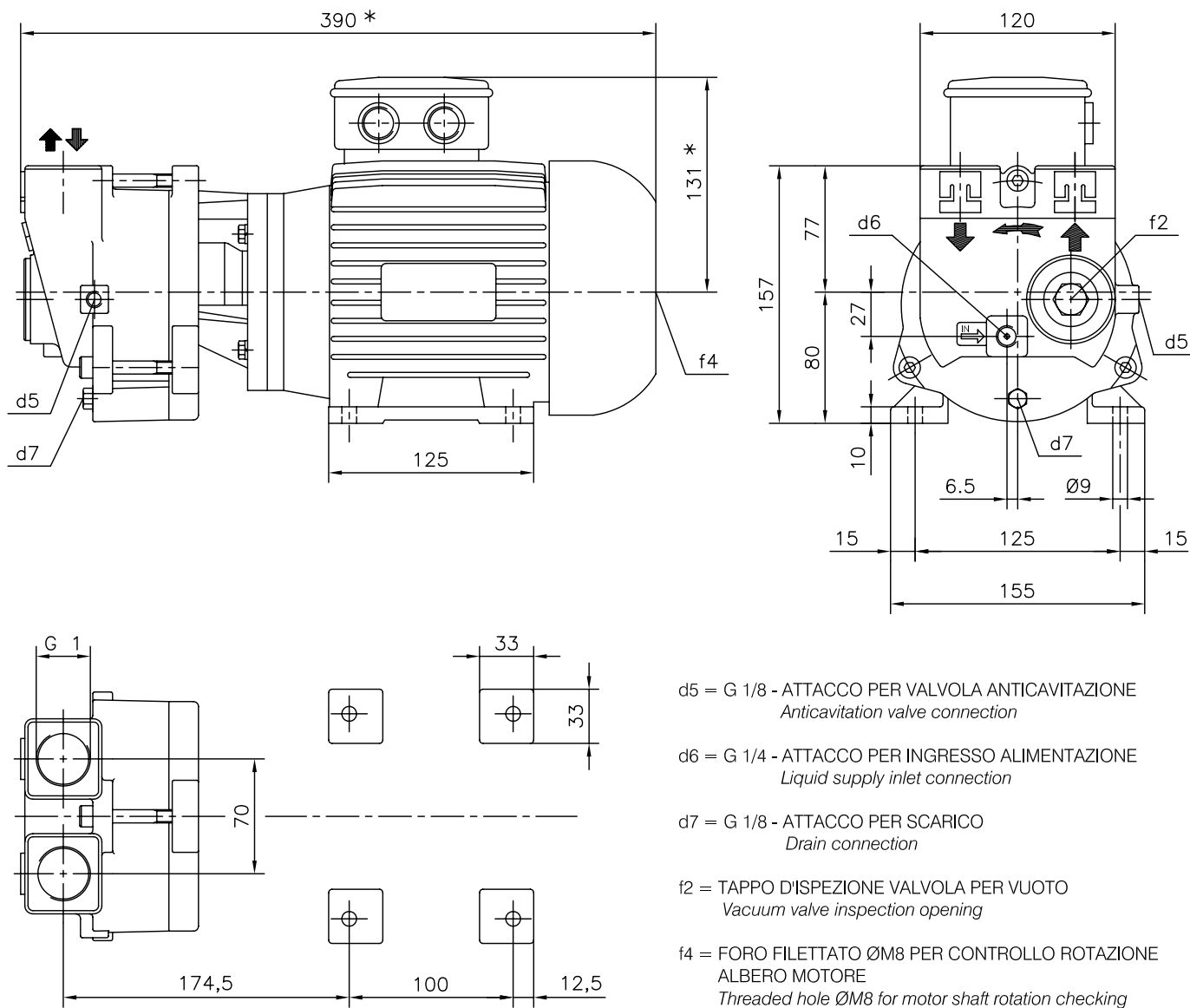


DIMENSIONI D'INGOMBRO / Overall dimensions
 POMPA PER VUOTO AD ANELLO DI LIQUIDO
 Liquid ring vacuum pump
 SERIE / Series
TRMB 25-30



**TRAVAINI
 PUMPS USA**
 Liquid Ring & Rotary Vane Vacuum Pumps and Systems

200 Newsome Drive
 Yorktown, VA 23693
 1-800-535-4243
 www.Travaini.com



* DIMENSIONE IN FUNZIONE DELLA MARCA DEL MOTORE INSTALLATO / Not binding dimensions according to installed motor make.

PESO POMPA	18 Kg
<i>Pump weight</i>	<i>18 Kgs</i>
MOTORE TIPO	80 a 2 POLI - IP 55
<i>Motor type</i>	<i>80 at 2 poles - IP 55</i>
Kw	0,75 / 1,1
Hz	50 / 60
V	220 - 240 / 380 - 415
TENUTA MECCANICA	Ø 22 mm
<i>Mechanical seal</i>	<i>Ø 22 mm.</i>

DISEGNO SCHEMATICO. DIMENSIONI IN mm CON TOLLERANZE SECONDO EN 735-1995.
 PESI INDICATIVI IN Kg, RIFERITI A POMPE IN GHISA, NON IMPEGNATIVI.
 Schematic drawing. Dimensions in mm with tolerances according to EN 735-1995.
 Weights in Ksg, referred to pump in cast iron, not binding.

RIF. - Ref.: Z.A./C.T.

SOSTITUISCE - Replaces:

DATA - Date: OTTOBRE 98 - October 98

N°.: 7090.1L7.201.01