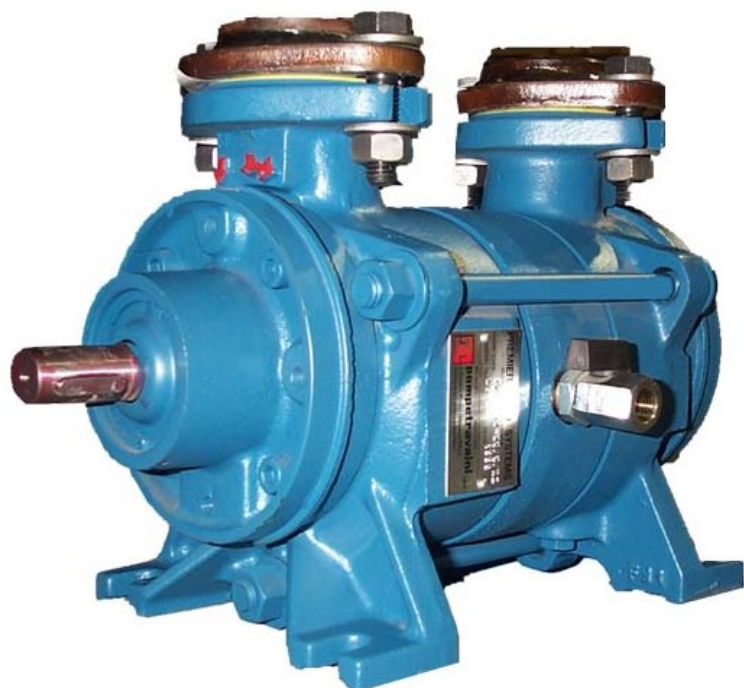


**TRHE32-4  
Two-Stage  
Liquid Ring Vacuum Pump**



200 Newsome Drive  
Yorktown, VA 23693  
1-800-535-4243  
www.Travaini.com



<b>Pressure Range</b>	53 to 760 TORR
<b>Capacity</b>	2.7 to 3.5 CFM
<b>Features</b>	Two stage vacuum pump with external sealed bearings
<b>Shaft Sealing Options</b>	Mechanical seals (Double mechanical seals optional)
<b>Options</b>	Bareshaft pump Coupled to electric motor Monoblock with electric motor
<b>Optional Accessories</b>	Available as a component in larger assembly

**Technical Data**

PUMP TYPE		TRHE32-4
Speed	RPM	1750
Motor - installed power	HP	1
Avg. service liquid flow	GPM	0.8
Noise level at 150 Torr	dB(A)	69
Min. suction pressure	Torr	53

**Standard Materials of Construction\*\***

Part No.	Description	GH	A3
106	Suction casing	Cast iron	Stainless steel AISI 316
107	Discharge casing		
110	Impeller housing		
210	Shaft	Stainless steel AISI 420	
357	Bearing housing	Cast iron	
230	Impeller	Bronze	Stainless steel AISI 316

**Model Designation**

<u>TRHE32-4/C-M/A3</u>	
T	Travaini manufacturer
R	Liquid ring pump
H	Two stage pump
E	Design revision
32	Flange size (mm)
4	Nominal capacity (m <sup>3</sup> /hr)
C	Shaft sealing: C = Mechanical seal C2=Double mechanical seal
A3	Materials of construction (see table)

\*\*Special materials available upon request

-Request for information on our WATERSEAL and DYNASEAL engineered vacuum systems

-For further information please consult Travaini Pumps USA.

REF:	JGJ/RR	Date	1/6/2015	Nº:	100646.000
------	--------	------	----------	-----	------------