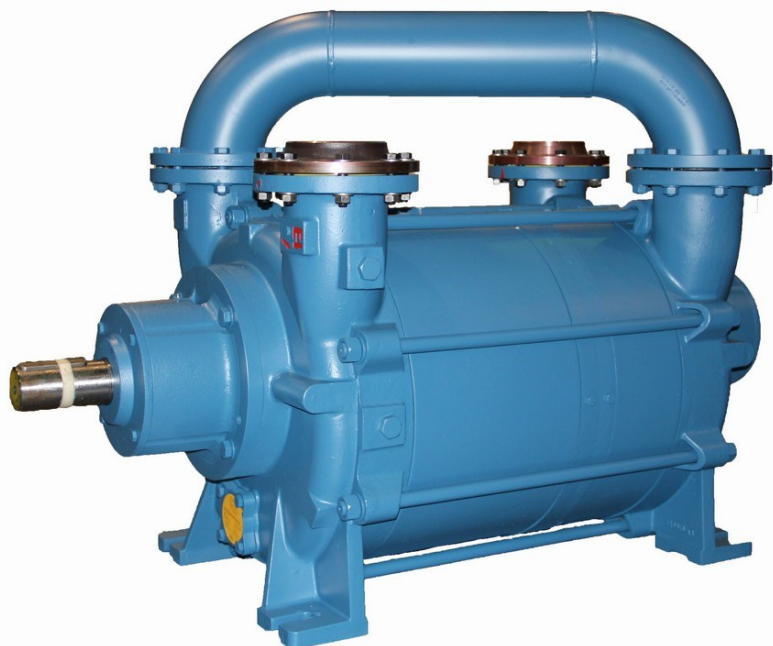


**TRHA150
Two-Stage
Liquid Ring Vacuum Pump**



200 Newsome Drive
Yorktown, VA 23693
1-800-535-4243
www.Travaini.com



Pressure Range	25 to 760 TORR
Capacity	690 to 2190 CFM
Features	Two stage vacuum pump with external sealed bearings
Shaft Sealing Options	Mechanical seals (Double mechanical seals or packing box optional)
Options	Bareshaft pump Coupled to electric motor V-Belt Driven
Optional Accessories	Available as a component in larger assembly

Technical Data

PUMP TYPE		TRHA150-2000		TRHA150-2600		TRHA150-3100	
Speed	RPM	730	880	730	880	730	882
Motor - installed power	HP	100	125	100	150	125	200
Average service liquid flow	GPM	40	40	44	44	53	53
Noise level at 150 Torr	dB(A)	83	84	84	84	84	84
Minimum suction pressure	Torr	25	25	25	25	25	25

Standard Materials of Construction**

Part No.	Description	F	RX	RA	A3
106	Suction casing	Cast iron			Stainless steel AISI 316
107	Discharge casing	Cast iron			
110	Impeller housing	Cast iron			
210	Shaft	Stainless steel AISI 420	Stainless steel AISI 316		
357	Bearing housing	Cast iron			
230	Impeller	Ductile iron	Stainless steel AISI 304	Stainless steel AISI 316	

Model Designation

TRHA150-3100/C/RA	
T	Travaini manufacturer
R	Liquid ring pump
H	Two-stage Pump
A	Design revision
150	Flange size (mm)
3100	Nominal capacity (m ³ /hr)
C	Shaft sealing: C = Mechanical seal C2=Double mechanical seal B = Packing seal
RA	Materials of construction (see table)

**Special materials available upon request

-Request for information on our WATERSEAL and DYNASEAL engineered vacuum systems

-For further information please consult Travaini Pumps USA.

REF:	JGJ/RR	Date	1/27/2015	Nº:	100652.000
------	--------	------	-----------	-----	------------